

# RAM's Tip for Today: (3)

Understand the simple, limiting case  
before getting complicated.

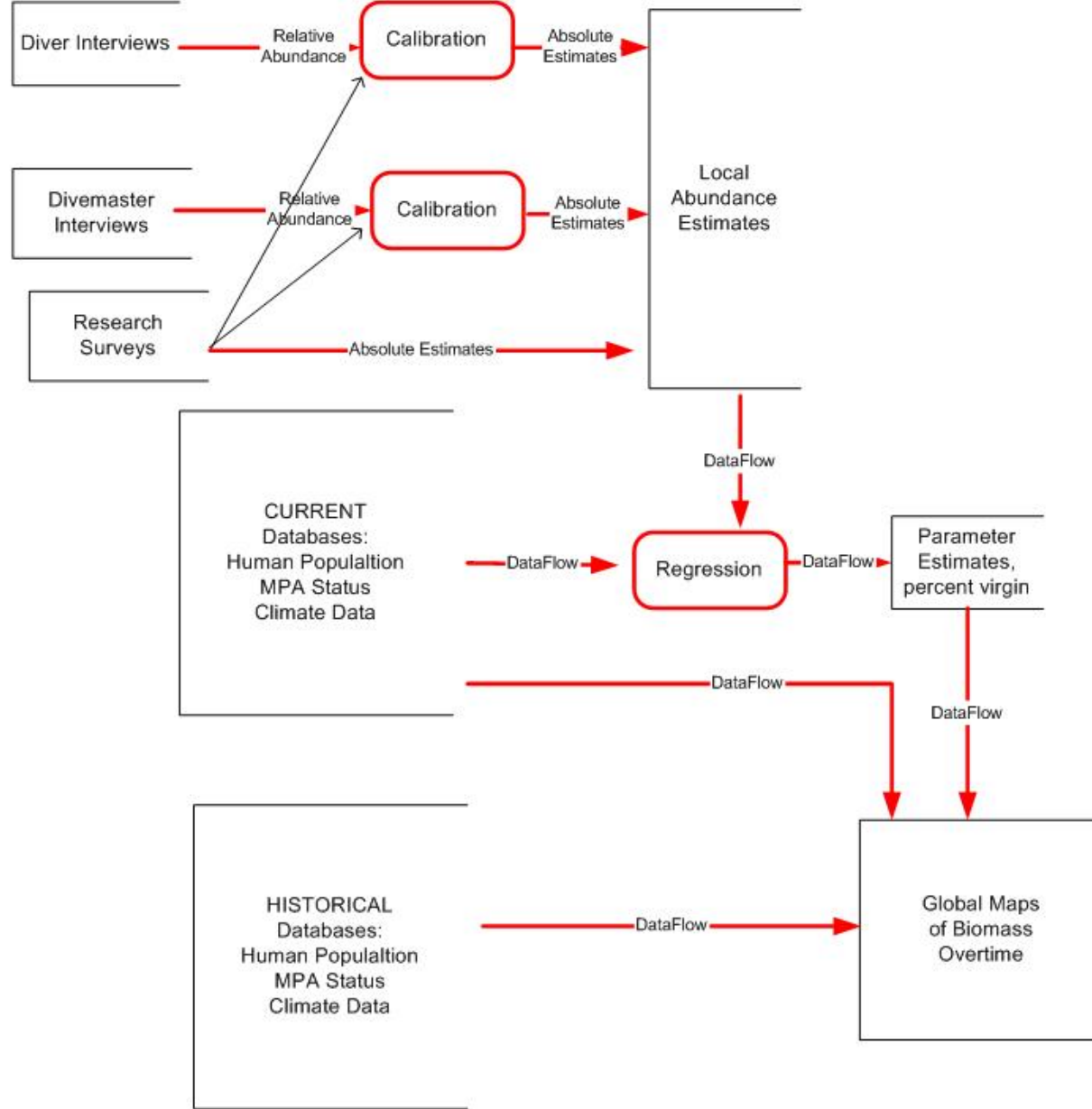
# Understand the simple first

- This applies to data, models, and the linking of models to data

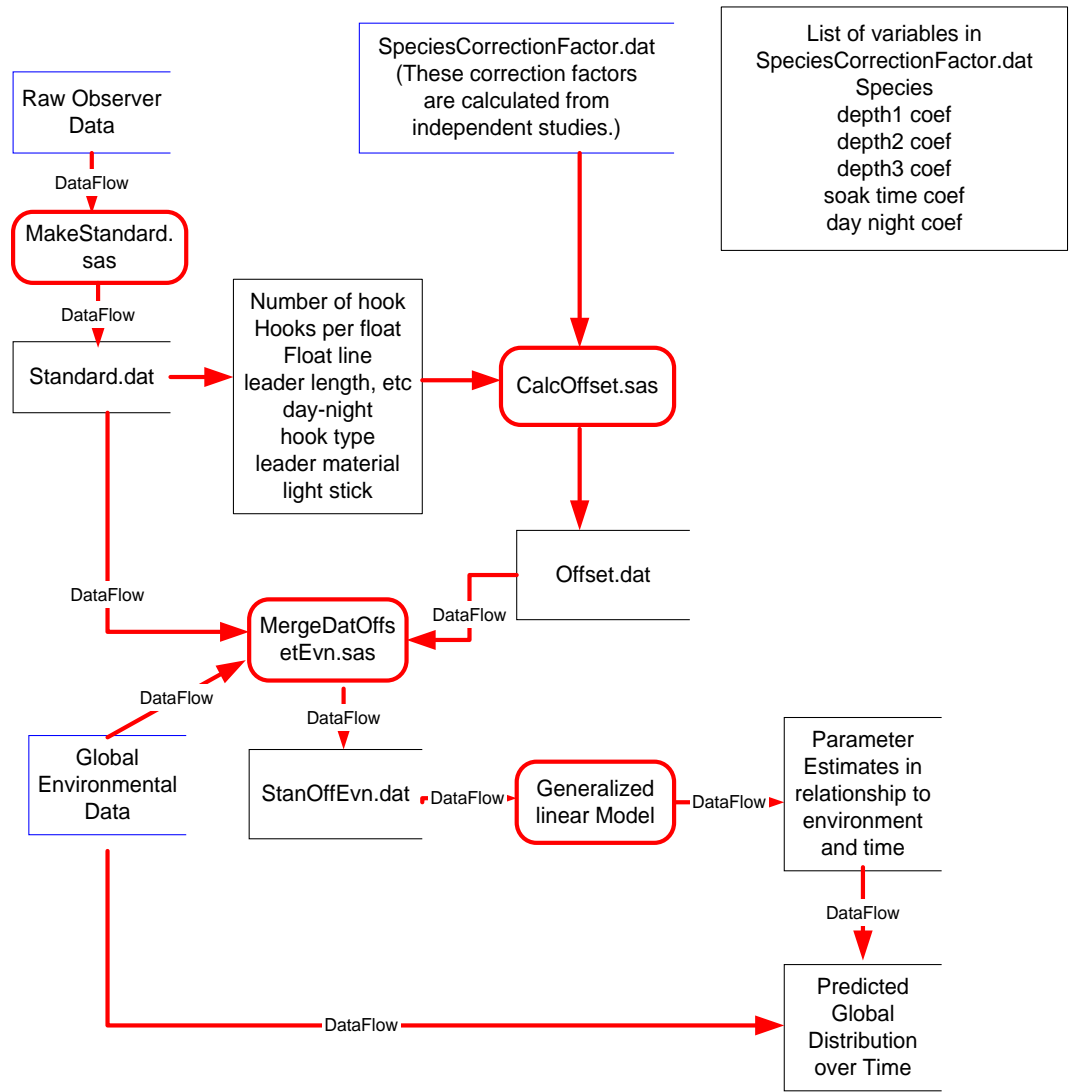
## Corollary to RAM tip 3:

### Test software on the examples

- Software, particularly specialized software that is free or expensive, will usually work on a very small range of possible problems.
- Test the software on these examples, and slowly move to new ones.



Outline of data flow to produce global maps of abundance for reef species. The goal is produce maps for species that are of interest to divers over time, and estimate the “pristine” abundances and biomass, and t he time trends over time to the present. This will be critical to estimating extinction probability.



This flow chart describes the flow data data and parameter estimates needed to map changes in the worlds pelagic ecosystem.

# Programming points:

- Programs are named in a consistent manner.
- Names mean something.
- Function of the programs are clear, i.e.
- Calc... means the program calculates something
- Make... means the programs makes something
- Plot... means the program plots something.

