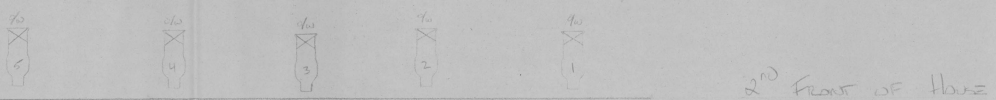
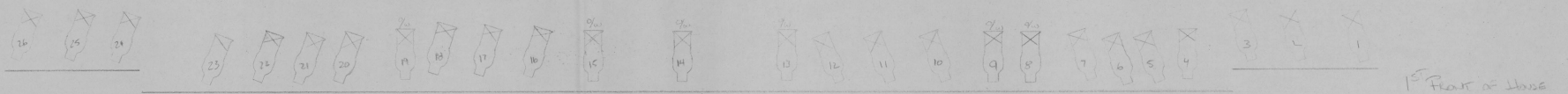
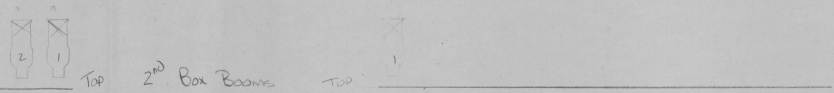
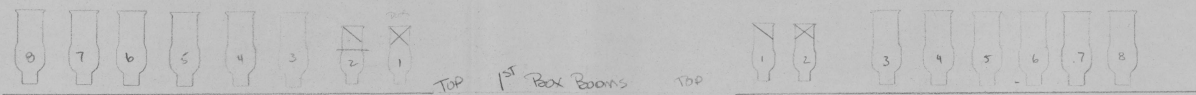
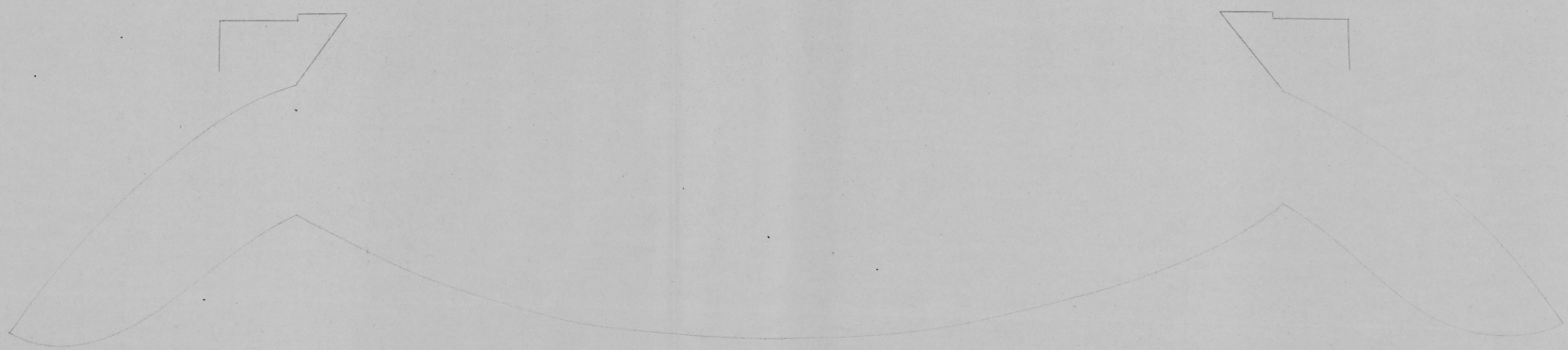
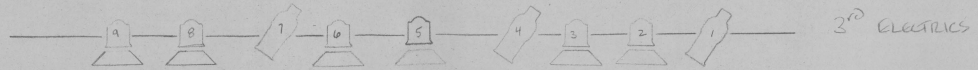
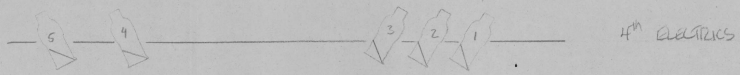


21	4 th ELECTRICS
12	3 rd ELECTRICS
9	2 nd ELECTRICS
4	1 st ELECTRICS



- pinellature - 1kw (12)
- STAND 2240 - 1kw (24)
- STAND 2220 - 1kw (8)
- STAND 2220 - 1kw (36)
- 6" FUSIBLE - 1kw (18)
- Breakdown

LETTER FROM WINDFIED FARM
 NESTINE THEATRE
 LIGHT PLOT
 DRAWN BY: BRIND PULOTT
 SCALE: 1/8" = 1' DATE: MARCH 11, 1914 MARCH 01, 1914