

Pulp Shipments

LOVELL'S

SUPERIOR

Typewriter Carbon Paper

Quachod Pulp & Paper Co. Ltd.

NO. 1—EXTRA

Highest Quality. Usual Thickness.



NO. 1—MULTI-COPY

Highest Quality. Thin,
Very sensitive for a large number
of manifolds.

OUR CARBON PAPERS ARE GUARANTEED SATISFACTORY

MAKE FINE, CLEAR COPIES, DO NOT SMUT, BLUR OR OFFSET

THE COLORS ARE · BLACK, BLUE, PURPLE, GREEN AND RED.



Typewriter Ribbons

NO BETTER RIBBONS MADE. DO NOT FILL IN THE TYPE. DO NOT FADE WEAR WELL.

Our Ribbons are guaranteed to give satisfaction
or money refunded.

TYPEWRITER PAPERS IN LARGE VARIETY AT WHOLESALE PRICES.



THE R. J. LOVELL CO., LIMITED

Wholesale Stationers

Printers, Bookbinders, Lithographers, Embossers, etc., etc.

Manufacturers of Account Books, Office Supplies, etc.

144-150 Simcoe Street

TORONTO, ONT.

Shipments of pulp
from Mackay pulp mills,
Milton, Queens Co., N.S.,
from 1922 to 1927.

The mill closed down forever
in 1930.

Pulp Shipments

Sept. 26, 1922.

Schooner "Nova Queen"

8,358 bales @ 228*	—	1,905,224 lbs wet
@ 52.71%	—	1,005,244 " dry
- 502.622 dry tons @ \$32.25	—	\$ 16,209.56

Oct. 4, 1922.

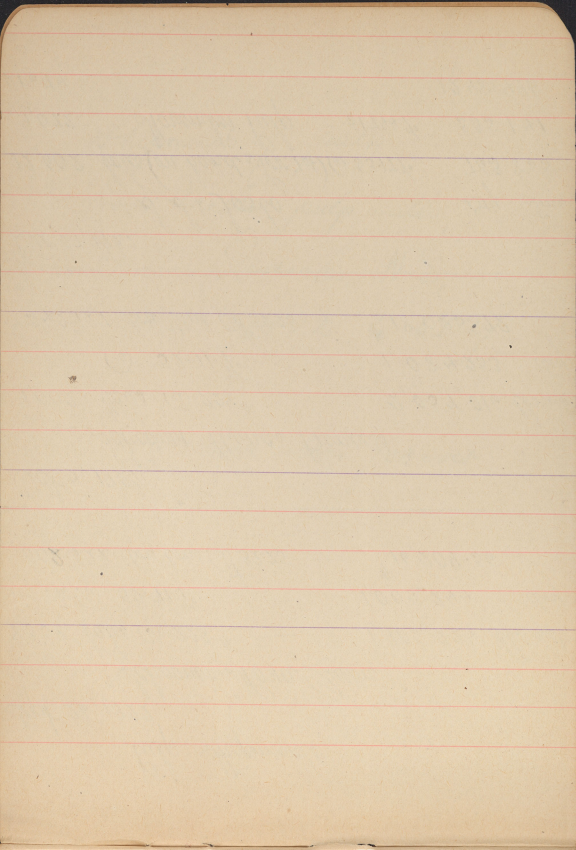
Schooner "Minas Princess"

9,002 bales @ 228*	—	2,057,016 lbs wet
@ 52.71%	—	1,084,253 " dry
- 542.127 dry tons @ \$32.25	—	\$ 18,025.72

Dec. 27, 1922.

S. S. Tosto

		Dry Tons
12,602 bales (on hand Nov. 1st) @ 53.17%		763.855
9,072 " November Pulp " 51.744%		535.141
21,674		1298.996



Jan. 26, 1923

1st trip

S/S Bornholm

Bales		Dry Tons
9,375	bales November pulp @ 51.744%	553.021
2,983	" December " " 51.715%	175.863
12,358		728.884

Feb. 7, 1923.

2nd. Trip

S/S Bornholm

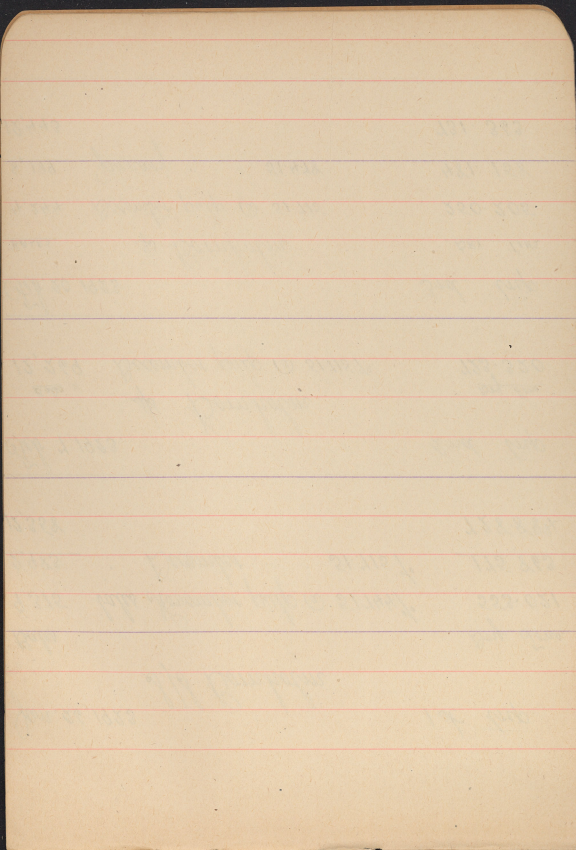
Bales		Dry Tons
12,269	December pulp @ 51.715%	723.320

Feb. 20, 1923

3rd. Trip

S/S Bornholm

Bales		Dry Tons
4,244	December pulp @ 51.715	250.205
8,199	January " " 51.478	481.158
12,443		731.363



Mar. 6, 1923.

4th trip

BALES

s/s Bornholm

DRY TONS

12,458

January pulp @ 51.478%

731.097

Mar. 21, 1923.

5th trip

BALES

s/s Bornholm

DRY TONS

869

January pulp @ 51.478%

51.003

11,568

February " " 51.381

677.588

12,437

728.591

Apl. 3, 1923

6th trip

Bales

s/s Bornholm

Dry Tons

6,825

February pulp @ 51.381%

399.768

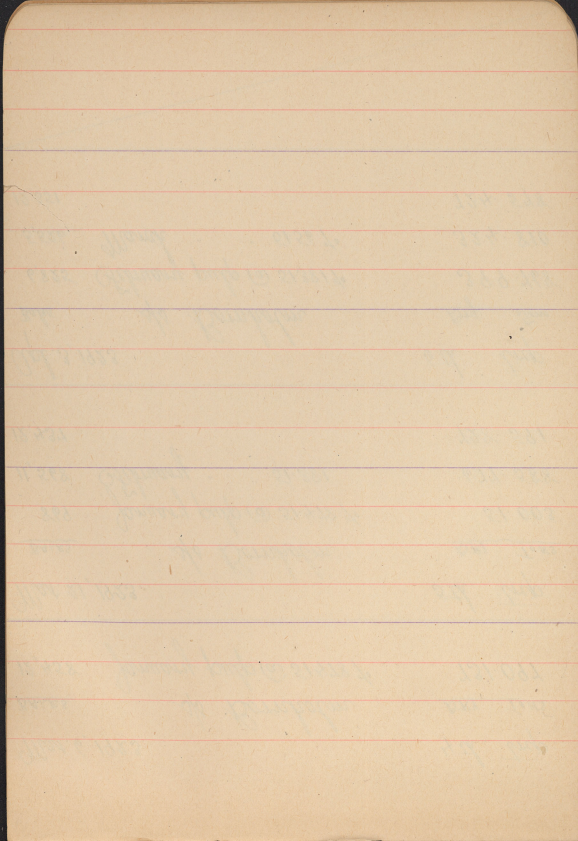
5,526

March " " 51.56%

324.810

12,351

724.578



April 17, 1923.

7th. Trip

Bales	sfs Bornholm	Dry Tons
12,533	March pulp @ 51.56%	736.674
44	April " " 51.506	2.584
12,577		739.258

May 1, 1923

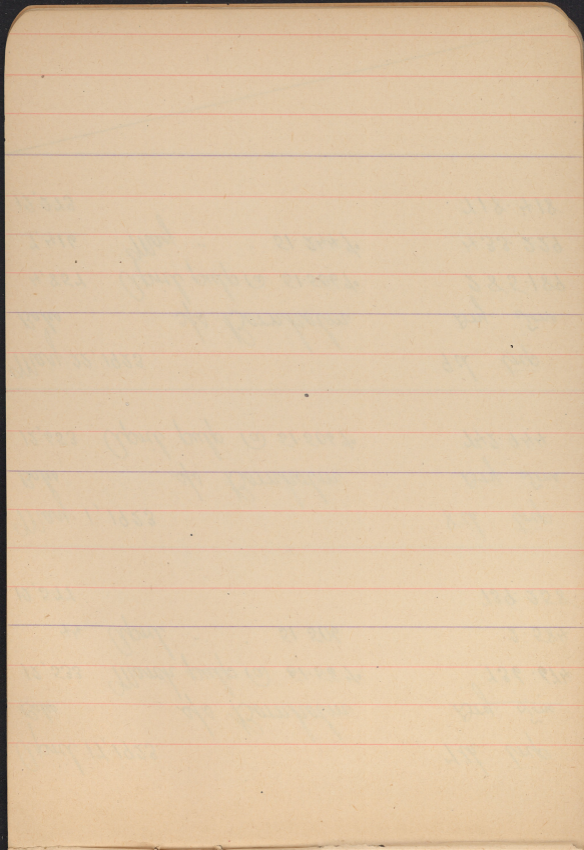
8th. trip

Bales	sfs Bornholm	Dry Tons
12,653	April pulp @ 51.506%	742.944

May 22, 1923

9th. trip

Bales	sfs Bornholm	Dry Tons
4,857	April pulp @ 51.506%	285.189
7,416	May " " 51.244%	433.229
12,273		718.418



June 26, 1923.

10 th. trip

Bales	sp Bornholm	Dry Tons
12,344	May pulp @ 51.244%	721.114

July 30, 1923

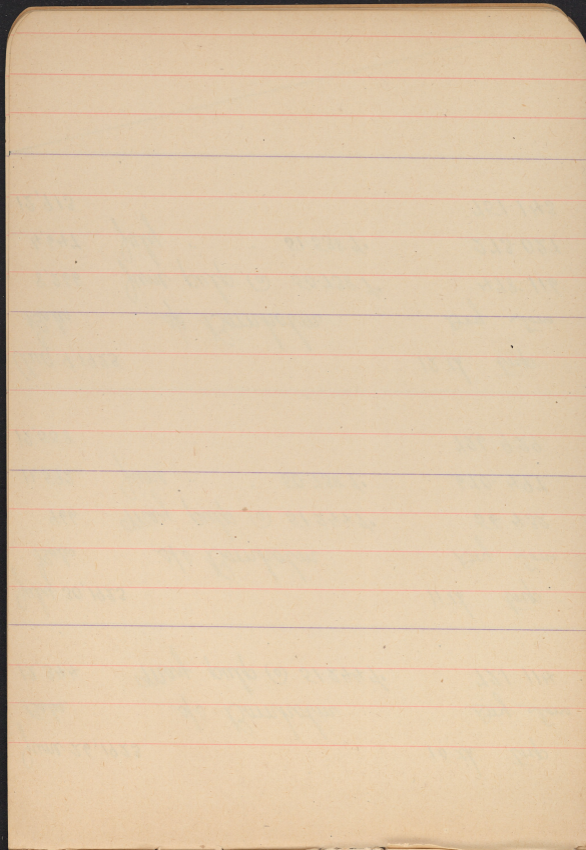
11 th. trip

Bales	sp Bornholm	Dry Tons
966	May pulp @ 51.244%	56.432
11,592	June " " 50.738%	670.497
12,558		726.929

Aug. 9, 1923.

12 th. trip

Bales	sp Bornholm	Dry Tons
8,266	June pulp @ 50.738%	478.116
4,647	July " " 51.538%	273.027
12,913		751.143



Aug. 24, 1923.

13th. trip

Bales	sfs Bornholm	Dry Tons
12,006	July pulp @ 51.538%	705.392
888	August 51.479%	52.113
12,894		757.505

Nov. 13, 1923.

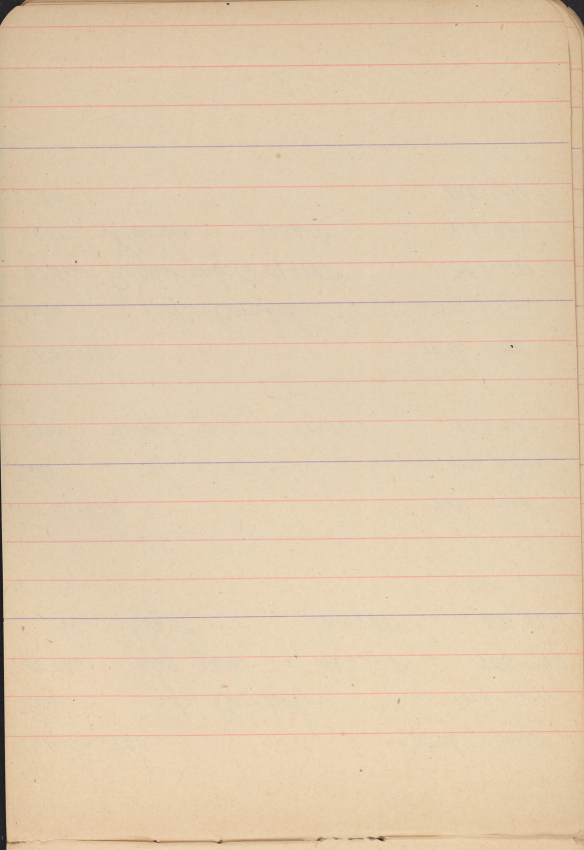
14th. trip

Bales	sfs Bornholm	Dry Tons.
2,700	August pulp @ 51.479%	158.451

Dec. 20, 1923

15th. trip

Bales	sfs Bornholm	Dry Tons.
5,258	August pulp @ 51.479%	308.671
7,050	November .. . 51.261%	411.985
12,308		720.656



Jan. 4, 1924

16th trip

Bales	sfs Bornholm	Dry Tons.
3,917	November pulp @ 51.261%	228.900
8,383	December " " 50.356%	481.233
12,300		710.133

Mar. 1, 1924

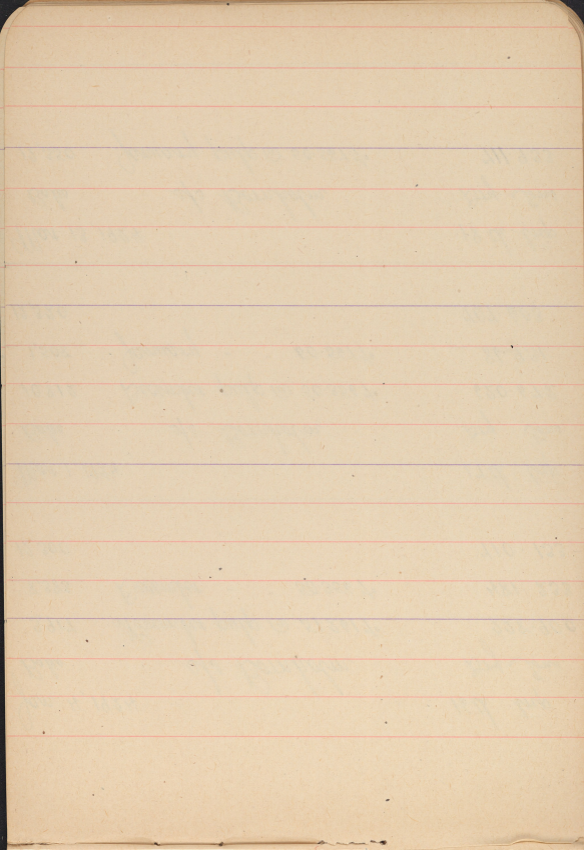
17th trip

Bales	sfs Bornholm	Dry Tons.
10,812	December pulp @ 50.356%	620.672
1,508	January " " 50.567%	86.931
12,320		707.603

Mar. 13, 1924

18th trip

Bales	sfs Bornholm	Dry Tons.
12,350	January pulp @ 50.567%	711.933



Mar. 26, 1924

19th trip

Bales

sp Bornholm

Dry Tons

8,010

January pulp @ 50.567%

461.748

4,315

February " 50.686%

249.329

12,325

711.077

Apl. 8, 1924

20th trip

Bales

sp Bornholm

Dry Tons

12,482

February pulp @ 50.686%

721.219

Apl. 22, 1924

21st trip

Bales

sp Bornholm

Dry Tons

1,839

February pulp @ 50.686%

106.261

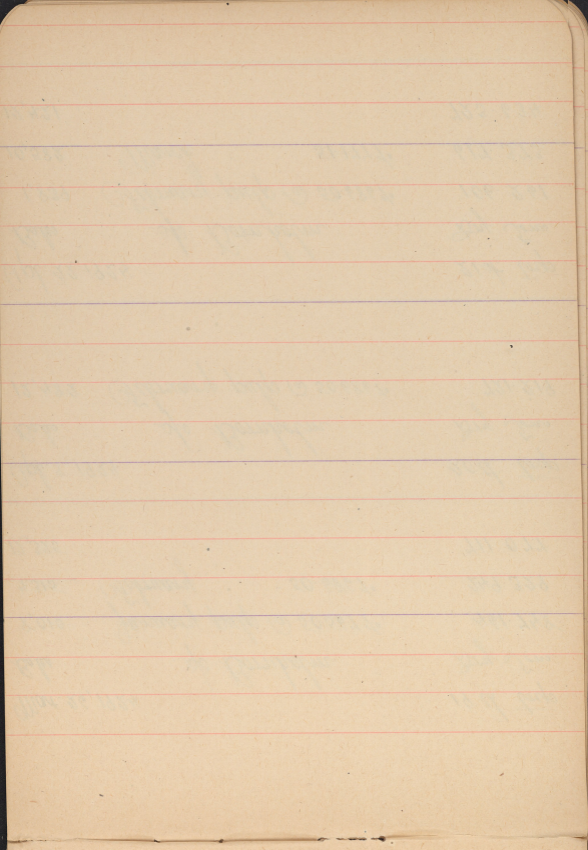
10,582

March " 51.177%

617.373

12,421

723.634



May 6, 1924.

22nd. trip.

Bales	s/s Bornholm	Dry Tons.
7,722	March pulp @ 51.177%	450.502
4,885	April " 51.039%	284.231
12,607		734.733

May 21, 1924

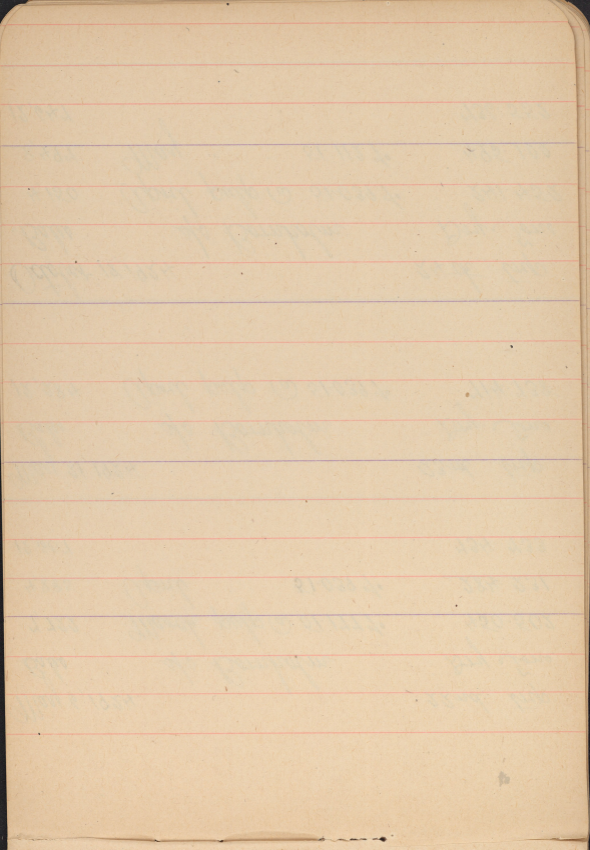
23rd trip

Bales	s/s Bornholm	Dry Tons.
12,284	April pulp @ 51.039%	714.738

October 18, 1924

24th trip.

Bales	s/s Bornholm	Dry Tons
4,150	April pulp @ 51.039%	241.452
8,497	May " 51.112%	495.100
12,647		736.552



Nov. 12, 1924.

25th. trip.

Bales	s/s Bornholm	Dry Tons
12,657	May pulp @ 51.112%	737.494

Nov. 27, 1924.

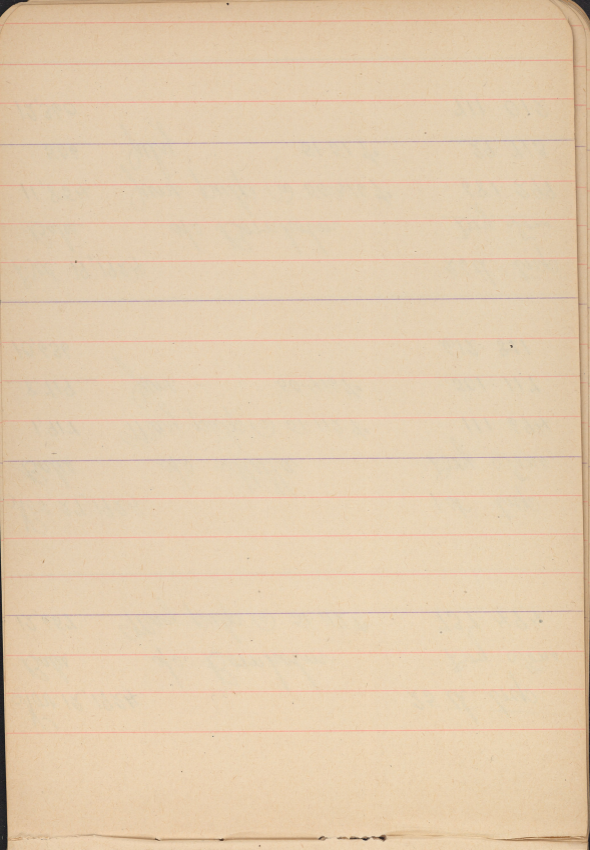
1st. trip

Bales	s/s Stella	Dry Tons.
1,917	May pulp @ 51.112%	111.694
8,719	June " " 50.416%	501.117
10,636		612.811

Dec. 19, 1924.

26th. trip

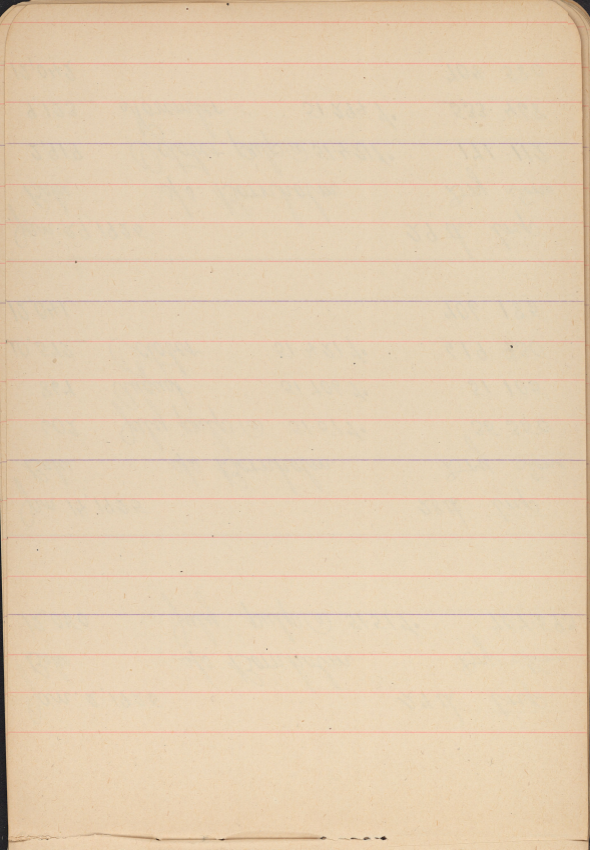
Bales	s/s Bornholm	Dry Tons
11,854	June pulp @ 50.416%	681.299
506	July " " 51.51%	29.713
12,360		711.012



Jan. 2, 1925 27th. trip.
Bales s/s Bornholm Dry Tons
12,050 July pulp @ 51.51% 707.593

Jan. 14, 1925 28th. trip.
Bales s/s Bornholm Dry Tons.
602 July pulp @ 51.51% 35.350
867 August 51.706% 51.105
10,572 October 51.421% 619.730
12,041 706.185

Jan. 29, 1925 29th. trip
Bales s/s. Bornholm Dry Tons
2,919 October pulp @ 51.421% 171.112
9,123 November 51.294% 533.468
12,042 704.580



Feb. 11, 1925.

Bales s/s Bornholm

30th. trip

Dry Tons.

5,006 November pulp @ 51.294%

292.726

7,168 December " " 50.530%

412.907

12,174

705.633

Feb. 26, 1925.

Bales s/s Bornholm

31st. trip

Dry Tons.

8,250 December pulp @ 50.530%

475.234

3,799 January " " 50.630%

219.271

12,049

694.505

Mar. 12, 1925

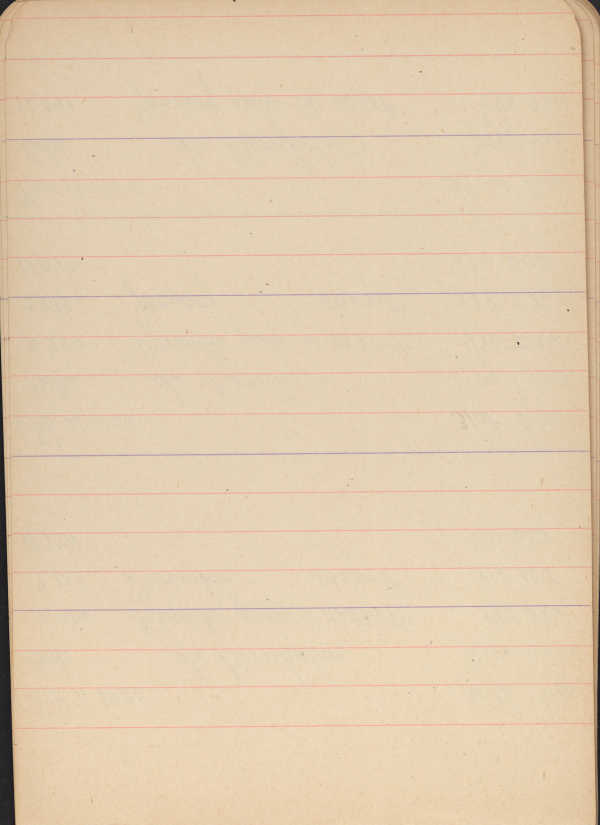
Bales s/s Bornholm

32nd. trip

Dry Tons

12,041 January pulp @ 50.631%

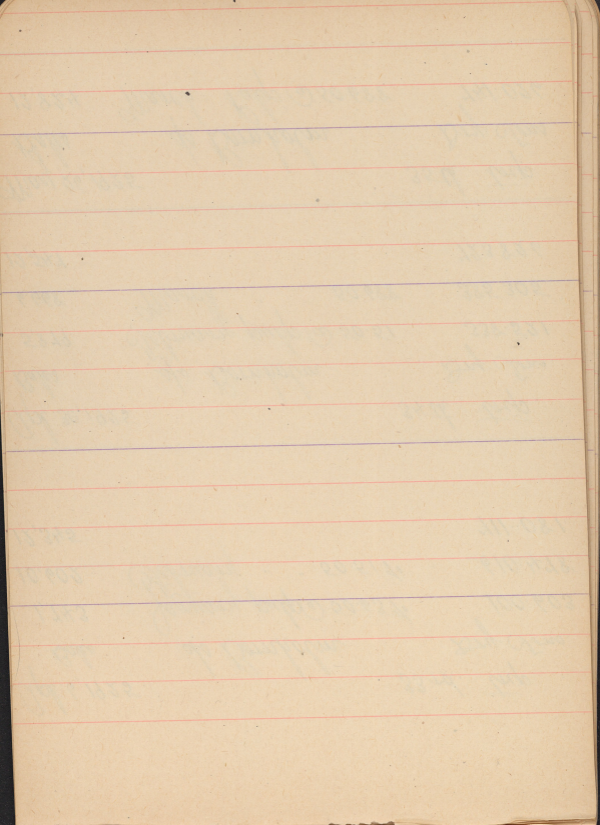
694.984



Apl. 6, 1925		33rd. trip
Bales	ss Bornholm	Dry Tons.
1,743	January pulp @ 50.63%	100.603
<u>10,602</u>	February " " 50.51%	<u>610.478</u>
12,345		711.081

Apl. 30, 1925		34th. trip
Bales	ss Bornholm	Dry Tons.
5,879	February pulp @ 50.51	338.521
<u>6,668</u>	March " " 50.688	<u>385.305</u>
12,547		723.826

May 26, 1925		35th. trip
Bales	ss Bornholm	Dry Tons
12,824	March Pulp @ 50.688	741.026



June 27, 1925.

36th. trip

Bales	sp Bornholm	Dry Tons
2,907	March pulp @ 50.688%	167.979
9,733	April " " 50.859%	564.312
12,640		732.291

July 9, 1925

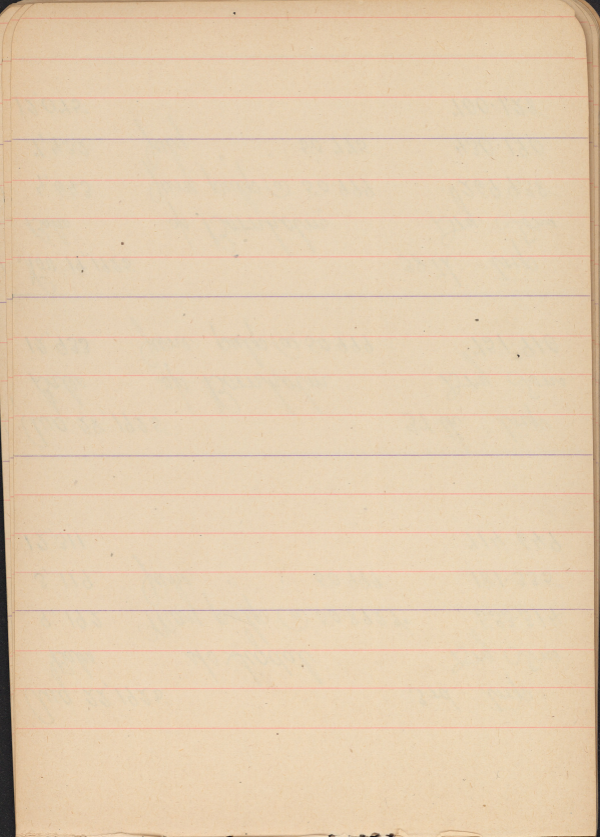
1st. trip

Bales	sp Sigdal	Dry Tons.
11,066	April pulp @ 50.859%	641.614
970	May " " 50.892%	56.276
12,036		697.890

August 12, 1925.

2nd. trip

Bales	sp Sigdal	Dry Tons.
11,625	May pulp @ 50.892%	674.446



Dec. 2, 1925.

39th trip

Bales	s/s Bornholm	Dry Tons
12,025	July pulp @ 50.775%	696.049

Dec. 15, 1925.

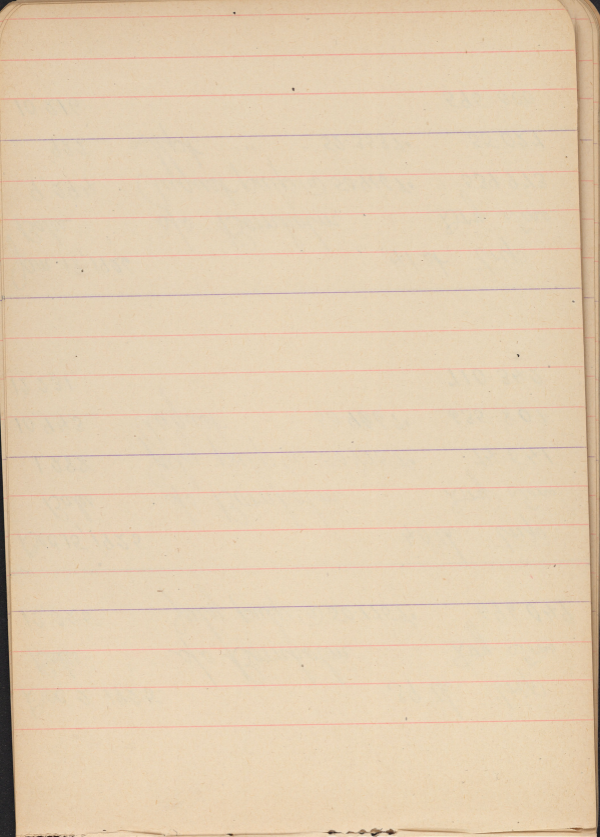
40th trip.

Bales	s/s Bornholm	Dry Tons
1,288	July pulp @ 50.775%	74.541
<u>10,943</u>	August 50.966%	635.801
12,231		710.342

Jan. 18, 1926.

41st trip

Bales	s/s Bornholm	Dry Tons
9,294	August pulp @ 50.966%	539.973
<u>922</u>	Sept. " " 52.353%	55.027
10,216		595.000



Feb. 12, 1926

S.S. Thyra

Hudson Trading Company

Bales 228*

Dry Tons

19,313	January pulp @ 50.405%	1109.758
19,301	Subsequent correction in checker's figures	1109.068

Feb. 16, 1926.

ss Bornholm 42nd

Tidewater Paper Mills

Bales 228*

Dry Tons

858	Sept. pulp @ 52.373%	51.208
2466	Oct. " " 49.871%	140.200
8828	Nov. " " 50.173%	504.937
12,152		696.345

(2029 bales from shed)

Mar. 5, 1926

ss Bornholm 43rd.

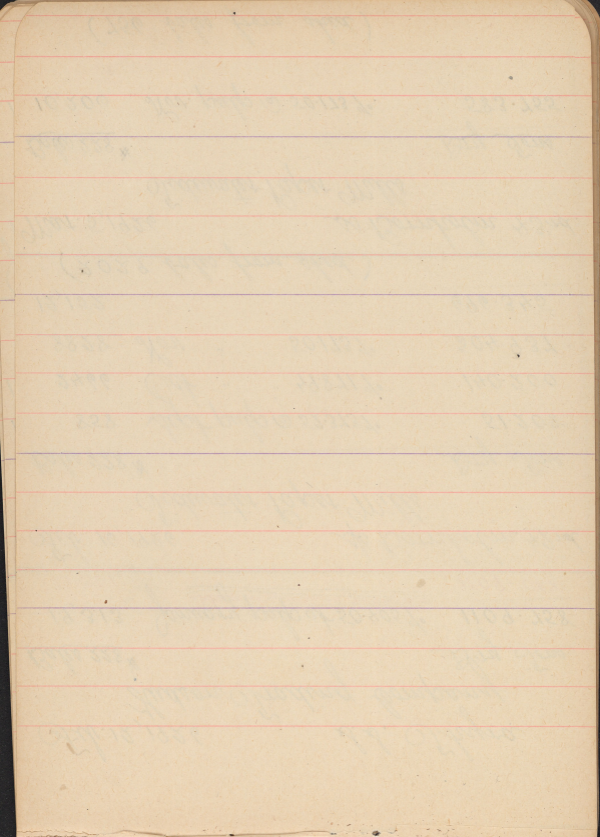
Tidewater Paper Mills

Bales 228*

Dry Tons

10,206	Nov. pulp @ 50.173%	583.755
--------	---------------------	---------

(756 bales from shed)



Mar. 19/26

s/s Erriva

Hudson Trading Co.

Bales 228[#]

Dry Tons

18,528

50.587%

1068.495

Apl. 8/26

s/s. Goldbek

Hudson Trading Co.

Bales

Dry Tons

18,599

@ 50.73%

1075.621

On Hand 5116 bales @ 50.606%

295.144

Apl. 14/26

44th s/s Bornholm

Fidewater Paper Mills

Bales

Dry Tons

91
~~11,918~~

November pulp @ 50.17%

5.205

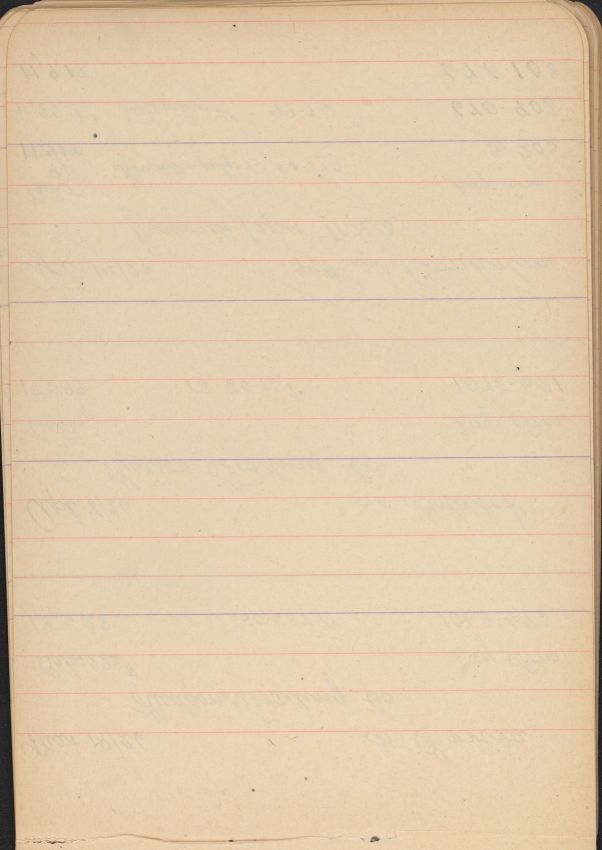
11,827

December .. 49.76

670.903

11,918

676.108



Apl. 14/26

so Bornholm 44th.

Tidewater Paper Mills

Bales 228*

Dry Tons

91 bales November Pulp @ 50.1737% 5.205

11,927 " December " 49.767% 676.576

12,018 681.781

Apl. 28/26

sp Bornholm 45th.

Tidewater Paper Mills

Bales 228*

Dry Tons

8051 bales Dec. pulp @ 49.767% 456.707

4239 " Feb. & Mar. " 50.6067% 244.551

12,290 701.258

May 12/26

sp Bornholm 46th.

Tidewater Paper Mills

Bales 228*

Dry Tons

11,947 April pulp @ 50.77127% 691.483

✓

May 24/26. sp Bornholm. 47 th.
Tidewater Paper Mills

Bales 228*		Dry Tons
7841	April Pulp	454.629
<u>4735</u>	May "	<u>275.266</u>
12,576		729.895

June 5/26 sp Aclaug 1st.
Tidewater Paper Mills

Bales 228*		Dry Tons
13,179	May Pulp 50.995%	766.152

July 29/26. sp H. J. Kyvig. 1st.
Tidewater Paper Mills

10,218		
3875	May Pulp	225.270
<u>6343</u>	June "	<u>369.324</u>
10,218		594.594

Aug. 20/26

Bales 228⁷⁴

6109

sp Kilmarnock 1st

~~Dry Stone~~

June Pulp

355.70 ~~355~~

See Kilmarnock cargo above.

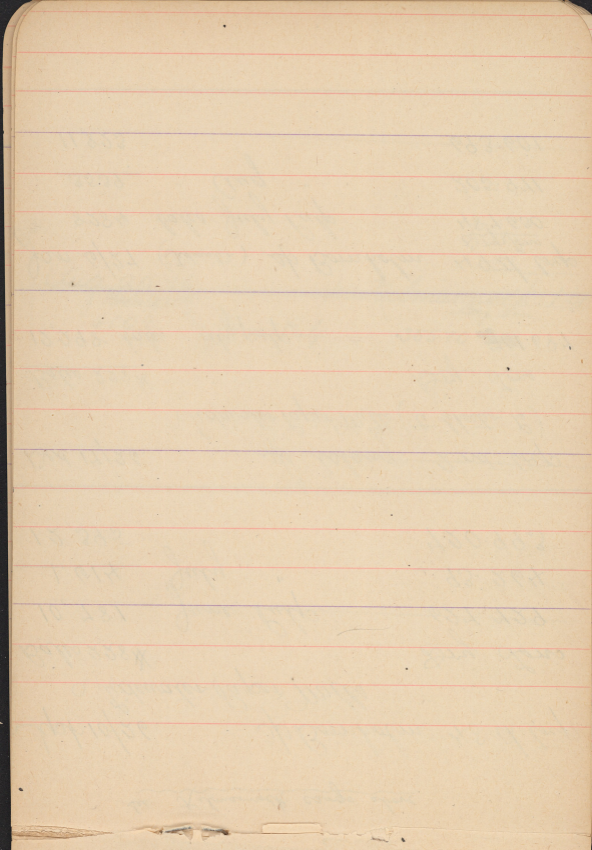
Sept 10/26. sp Bornholm 48th trip
Sidewater Paper Mills

Bales 228*		Dry Tons
10,781	June Pulp.	627.729
<u>1,614</u>	July "	<u>93.264</u>
12,395		720.993

Dec. 17/26. sp Aulang. 2nd. trip.
Sidewater Paper Mills (to Chester Pa.)

Bales 228*		Dry Tons
12,298 bales	July pulp.	701.687

Jan. 6/27. (Sidewater) sp Bornholm. 49th trip.
8284 bales July Pulp. Dry Tons 487.630
3539 " Aug. " 205.971
11,823 693.601



Jan. 20/27. sp Bornholm. 50th.

Tidewater Paper Mills.

Dry Tons

10687 bales @ 51.0237°

621.625

This cargo cleans up Tidewater pulp sold to date, also includes 453 bales of fresh pulp = 26.003 dry tons.

Feb. 22/27

sp Astaug.

Scott Paper Co.

Dry Tons

12000 bales (Nor. pulp) @ 50.3537°

688.829

Mar. 21/27

sp Bornholm. 51st.

Tidewater Sales Corp.

Dry Tons

3960 bales Nor. Pulp

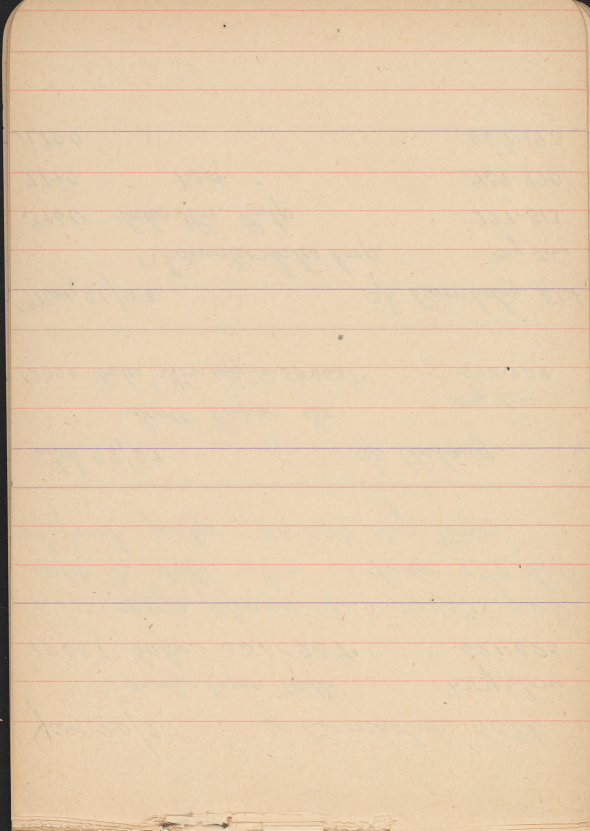
227.313

7740 " Aed. "

439.880

11,700

667.193



4488

3568

8448

Bales

1925

25,388

12,075

13,313

20,237

1,780

35,330

2,466

19,125

56,921

12,025

44,896

12,231

32,665

10,216

22,449

Brought Forward

Nov 19, Bernholm 38th

August Pulp Clear 50.966

52.353

Oct Pulp Clear 49.871

50.173

Nov

Dec 2 Bernholm July Pulp 696.049 dry gm =

July Pulp 1288 bales =

74,541
6,358.01

Dec 15 Bernholm Aug = 10945

110,542

414

1926

Jan 18 Bernholm

Aug Pulp

9294

10,216

539,973

55,027

595,000

Rec Pulp

1911
1912
1913
1914
1915
1916
1917
1918
1919
1920
1921
1922
1923
1924
1925
1926
1927
1928
1929
1930
1931
1932
1933
1934
1935
1936
1937
1938
1939
1940
1941
1942
1943
1944
1945
1946
1947
1948
1949
1950
1951
1952
1953
1954
1955
1956
1957
1958
1959
1960
1961
1962
1963
1964
1965
1966
1967
1968
1969
1970
1971
1972
1973
1974
1975
1976
1977
1978
1979
1980
1981
1982
1983
1984
1985
1986
1987
1988
1989
1990
1991
1992
1993
1994
1995
1996
1997
1998
1999
2000
2001
2002
2003
2004
2005
2006
2007
2008
2009
2010
2011
2012
2013
2014
2015
2016
2017
2018
2019
2020
2021
2022
2023
2024
2025
2026
2027
2028
2029
2030
2031
2032
2033
2034
2035
2036
2037
2038
2039
2040
2041
2042
2043
2044
2045
2046
2047
2048
2049
2050
2051
2052
2053
2054
2055
2056
2057
2058
2059
2060
2061
2062
2063
2064
2065
2066
2067
2068
2069
2070
2071
2072
2073
2074
2075
2076
2077
2078
2079
2080
2081
2082
2083
2084
2085
2086
2087
2088
2089
2090
2091
2092
2093
2094
2095
2096
2097
2098
2099
2100

Bales

Jan. Market April pulp on hand

June 27. Bornholm 2nd trip

April Pulp on hand

May Pulp Cost. 50.8927.

23,706

12,640

11,066

21,787

32,853

12,036

July 9 Sigdal 1st trip

May Pulp on hand

Aug 12 Sigdal 2nd

May Pulp on hand

June Pulp Cost 50.999

9,192

20,695

29,887

Aug 22 Sigdal 3rd trip

June Pulp on hand

Aug 28 Bornholm 3rd trip

June Pulp on hand

July Pulp Cost 50.775

17,576

12,311

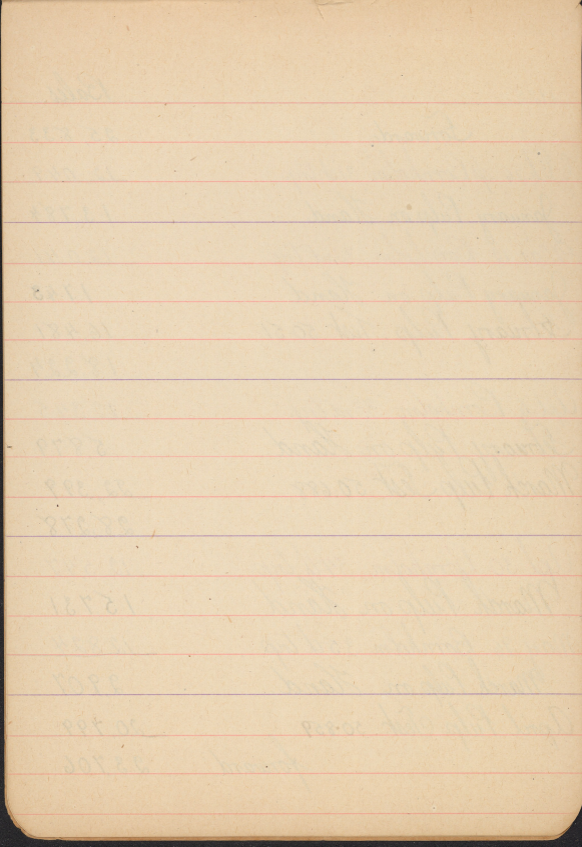
12,933

4,643

20,745

25,388

Forward



Notes

25,833

Forward

12,049

Feb 26 to Bornholm 31st trip

13,784

January Fulp on Island

12,041

Mar 12 Bornholm 32nd trip

1,743

January Fulp on Island

16,481

February Fulp. Test 50.51

18,224

12,345

Apr 6 Bornholm 33rd trip

5,879

February Fulp on Island

22,399

March Fulp. Test 50.688

28,278

12,547

Apr 30 Bornholm 34th trip

15,731

March Fulp on Island

12,824

May 26 Bornholm 35th trip

29,907

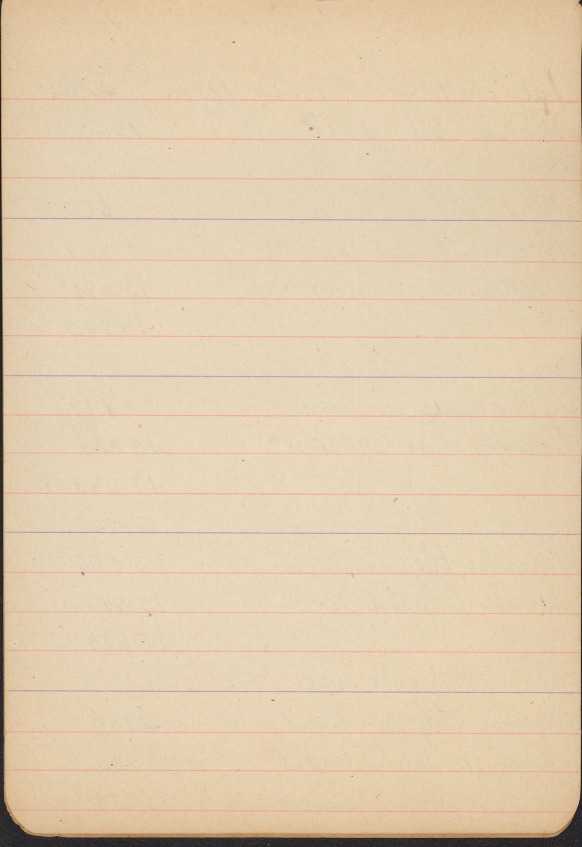
March Fulp on Island

20,799

April Fulp. Test 50.859

23,706

forward



Pulp on hand Dec. 31st. 1994. *Notes*

12652

12050

602

867

13491

14960

12041

2919

14129

17048

12042

5006

15418

20424

12174

8250

17583

25833

July Pulp. Est 51.51%

Jan 2. Shipped 27th trip Borndelm.
July pulp on hand
August pulp. Est 51.706%

October 51.421%

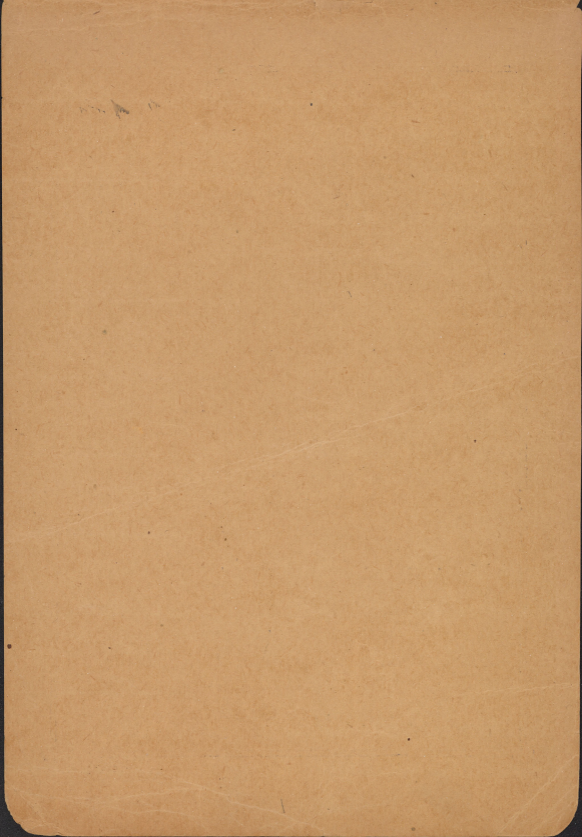
Jan 14/95 off Borndelm 28th trip
October pulp on hand
November Pulp. Est 51.294%

Jan. 29/95 off Borndelm. 29th trip
November Pulp on hand
December Pulp. Est 50.53

Feb. 11/95 off Borndelm 30th trip

December Pulp on hand
January 1925 Pulp. Est 50.63

Forward



TORONTO, ONTARIO

144-150 SIMCOE STREET

PRINTERS, BOOKBINDERS, LITHOGRAPHERS

TYPEWRITERS' SUPPLIES

STATIONERS

MANUFACTURING AND IMPORTING

THE R. J. LOVELL CO. LIMITED

MANUFACTURED BY



Pen and Pencil Writing

PAPER SPECIALLY PREPARED FOR

No. 200

Note Book

Reporter's



S. Paddock