

PRESENT LAUGHTER NEPTUNE THEATRE
 #1ST STEP UNIT
 JIN CUONG
 SHEET 6



"PRESENT LAUGHTER" BALI STRADE #8
 NEPTUNE THEATRE J.M. GREGG 1" = 1 FOOT
 FEB. 184

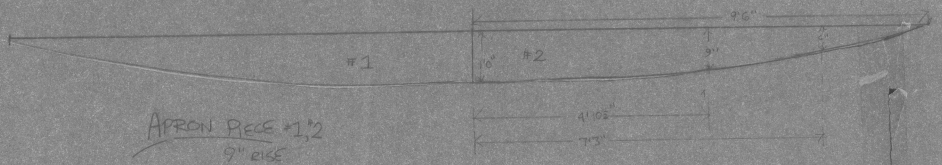




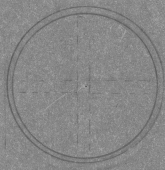
"PRESENT LAUNCH" 12/2006
 RISERS
 #2-6, 9 - 4'x8'
 #1 #7 - SEE PLAN
 #8 - 4'x4'
 ALL RISERS 9" RISE
 SHEET # 2 JK 006

SR

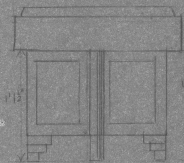
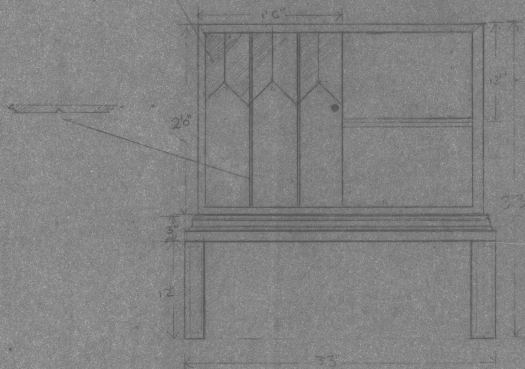
SL



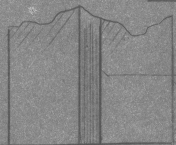
APRON PIECE #1, 2
 9" RISE



MYLAR
FRACING



END TABLE



1/4" PLY
1 x 2"
FULL SCALE SIDE VIEW of LEG PANEL



DRINKS TABLE

MYLAR Top

SCREEN

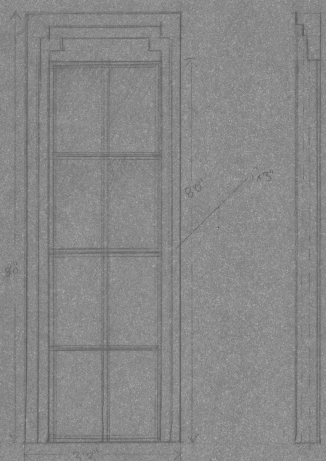
CLEAR

LAQUERED

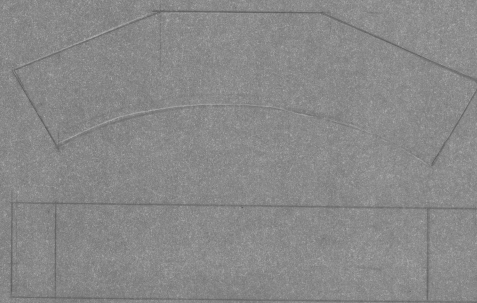
HINGES

"PRESENT LAUGHTER" FURNITURE PLANS #2
DR. T. KERR NEPTUNE THEATRE, HALIFAX
JIM GUEDO 1" = 1 FOOT

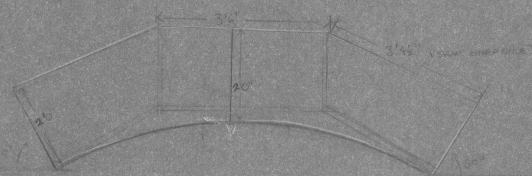




③ WINDOWS



Top of
WINDOW



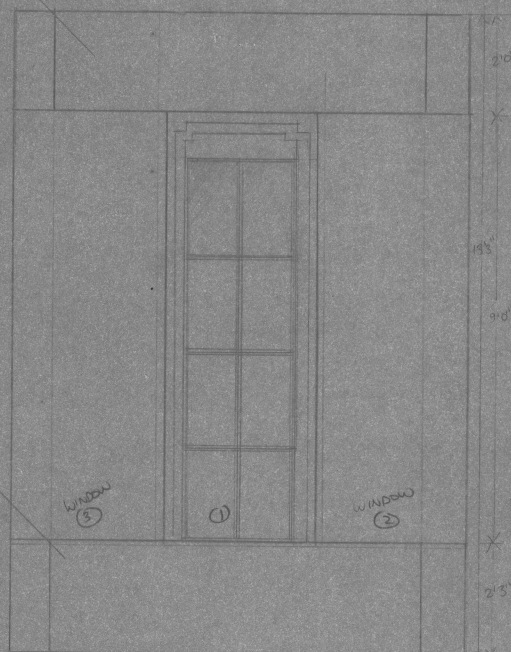
PATH STEP FACING

VENEE
FACING



WINDOW
SEAT

VENEE
FACING



WINDOW
①

WINDOW
②

PRESENT/AUGHTER

DIR: T. KERR
DESIGNER: JIM GUEDO

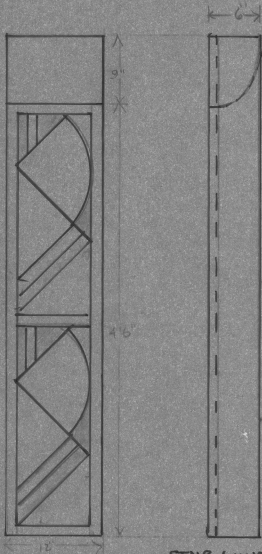
NEPTUNE
THEATRE

FEB/84 1/2" = 1'0"

#5

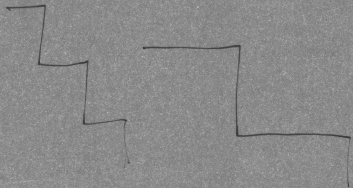


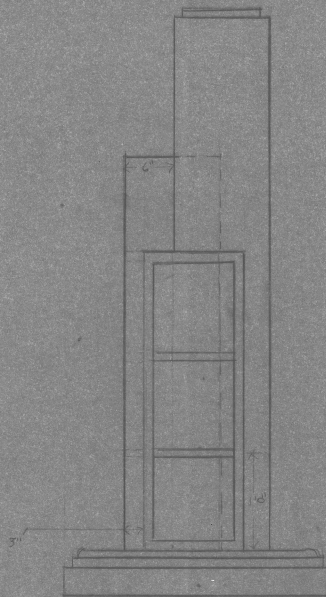
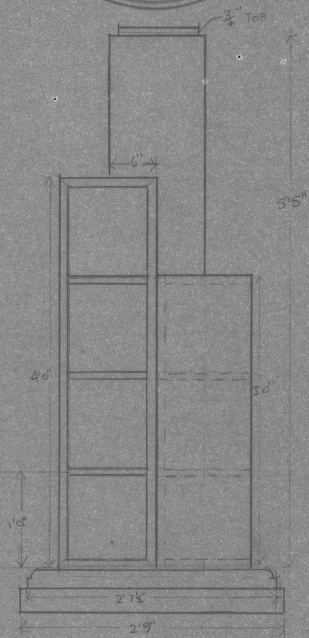
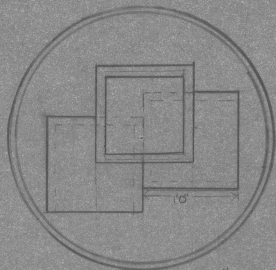
PRESENT LAUGHTER BY NEEL COWARD
 DIR: T. KERR DESIGNED BY JIM GUEDO
 NEPTUNE THEATRE FEB/54
 FLOOR PLAN 1/2" = 1'0" SHEET # 1



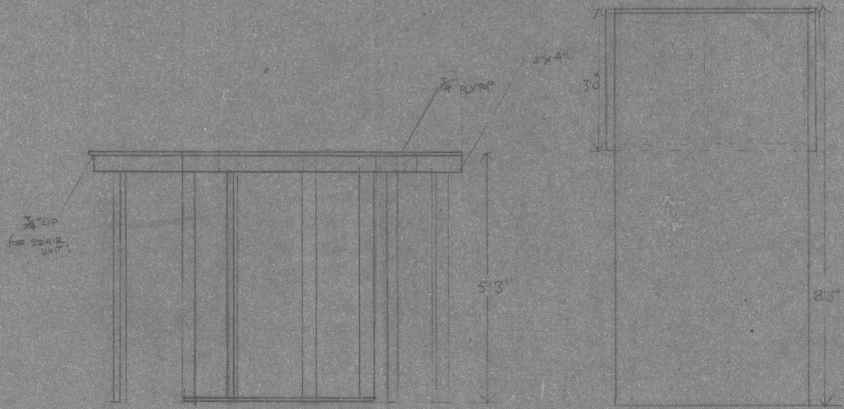
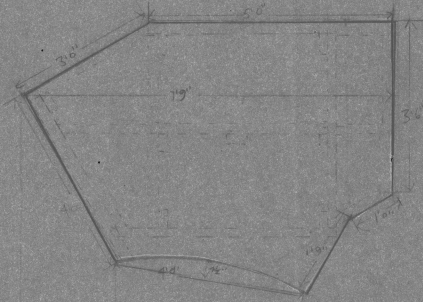
STAIR WINDOW
STAINED GLASS

PRESENT LAUGHTER
STAINED GLASS
WINDOW
U Stair
Feb/84 Jim Greenwood

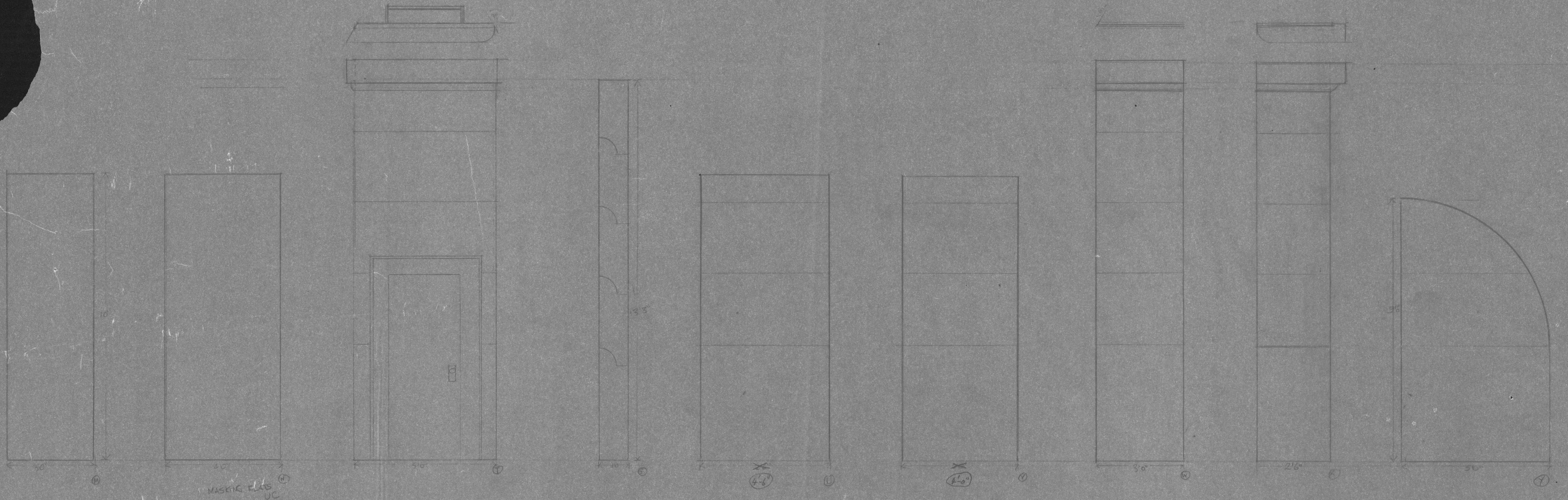




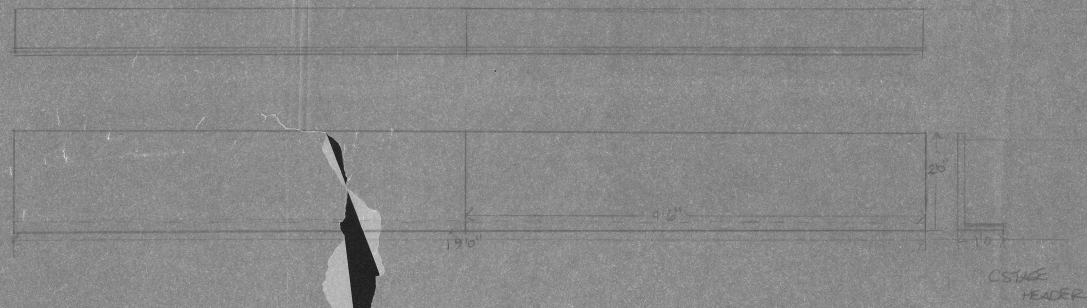
"PERCENT LAUGHTER" BOOKCASE
 NEPTUNE THEATRE HALIFAX
 DESIGN: SIM GUEDO
 FEB 16/84 1" = 1'00"



"PRESENT LAUGHTER" Upper STAIR UNIT
 D.R. T. KERR DESIGNER: JIM CLOOG
 1/4" = 1'0" NEPTUNE THEATRE FEB 1974 * 7



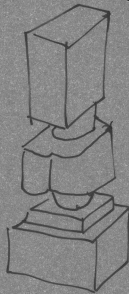
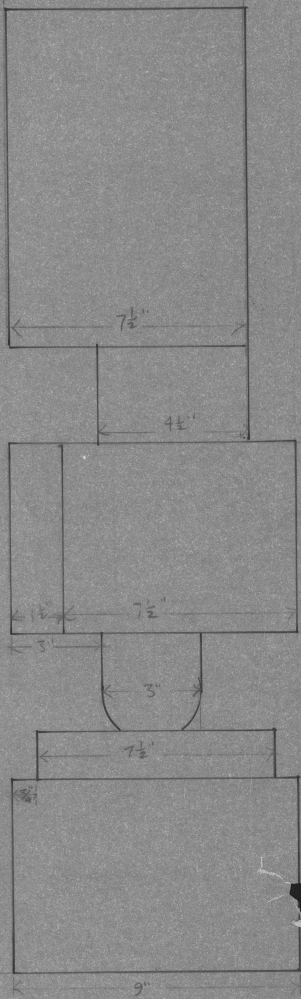
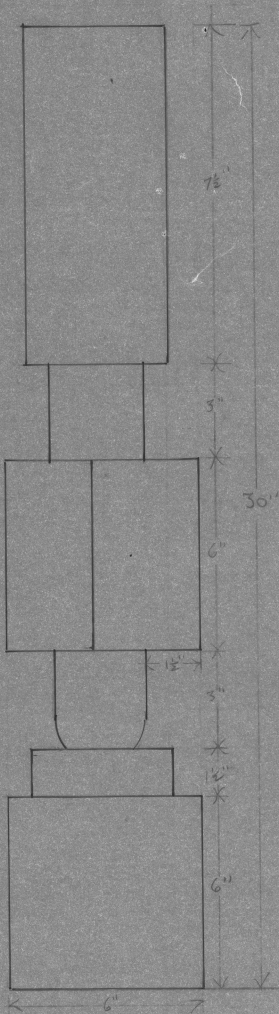
MASKING FLAT UC



STAGE HEADER

REMAINING FLAT ELEVATIONS
AND HEADERS. $\frac{1}{2}'' = 1'0''$
 PRESENT LAUGHTER
 DIR. T. KERR
 DESIGNED J. INGERS
 NEPTUNE THEATRE
 FEB/54

SHEET
 # 4



SCULPTURE
PIECE

PRESENT
LAUGHTER

FEB/84

NEPTUNE
THEATRE

J.M. GARD

CROSS-SECTIONAL
NEPTUNE THEATRE

SCALE: 1/2" = 1'

FOH PIPE #2

FOH PIPE #1
(at CS)

FOH PIPE #1
(at SA+SL)

Box Boom #2

Buckets

Box Boom #1

at SL

Ball Rail

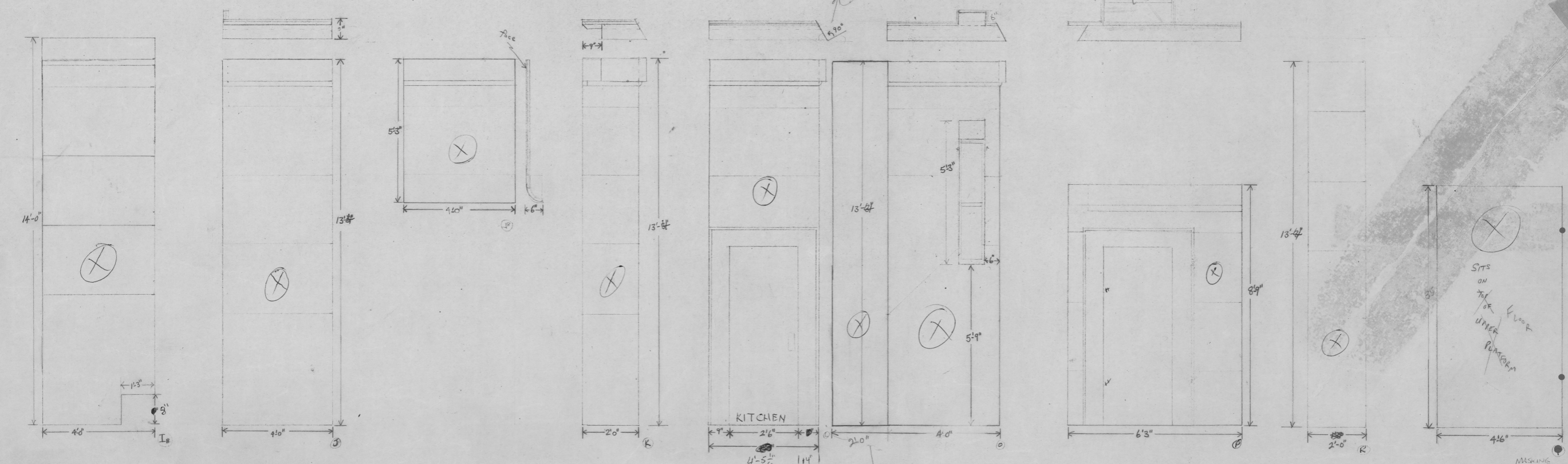
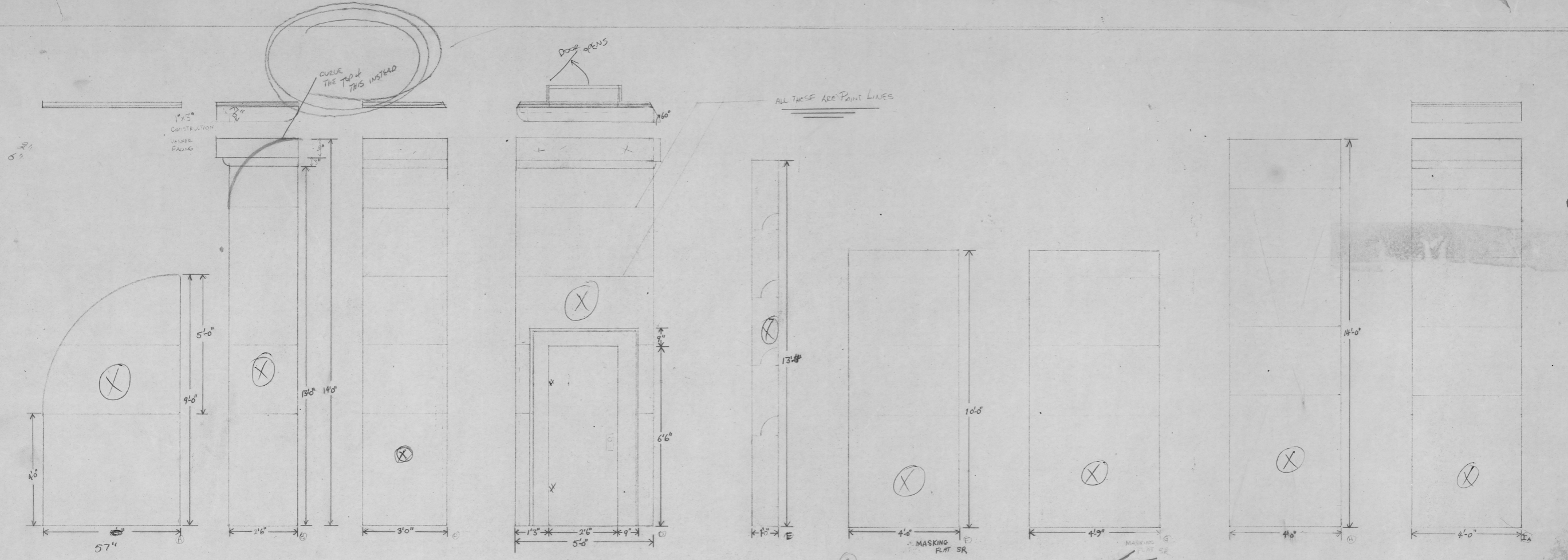
Ball Rail

Max. Flying
Height



ORCHESTRAL (Floor 8'-1" below stage floor)

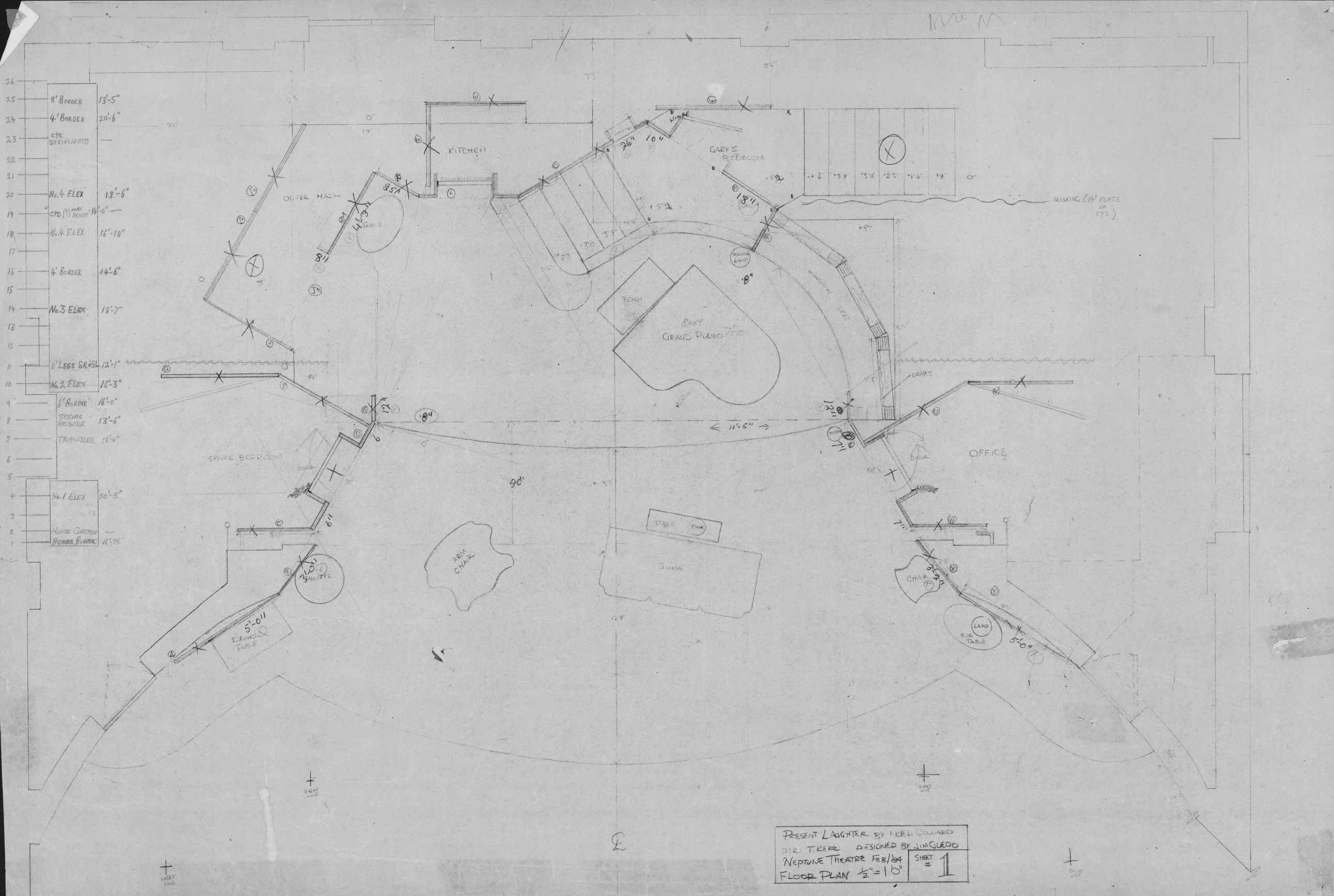
Revised Sept 1973
D. H. [Signature]



Extra Flat

"PRESENT LAUGHTER" DIR: TREE
 FLAT ELEVATIONS 1/2 = 110'

SHEET # 3

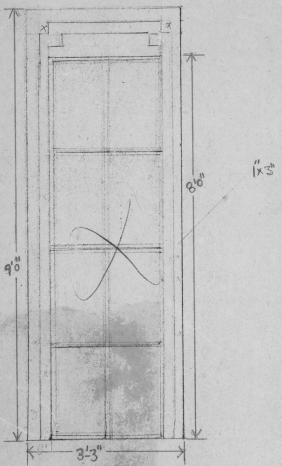


M.M.

- 26 8' BORDER 13'-5"
- 25 4' BORDER 20'-6"
- 24 CYC STRIPLIGHTS
- 23
- 22
- 21 No. 4 ELEX 12'-6"
- 20 CYC (3) MAX HEIGHT 14'-0"
- 19 No. 4 ELEX 16'-10"
- 18 4' BORDER 14'-6"
- 17
- 16 No. 3 ELEX 18'-7"
- 15
- 14
- 13
- 12
- 11 8' LEGS SR+SL 12'-1"
- 10 No. 2 ELEX 16'-3"
- 9 6' BORDER 16'-0"
- 8 SCENIC HEADER 13'-6"
- 7 TRAVELLER 18'-0"
- 6
- 5
- 4 No. 1 ELEX 20'-5"
- 3 HOUSE CURTAIN
- 2 HEMMER BORDER 11'-7 1/2"
- 1

PRESENT LAUGHTER BY NEEL DOWARD
 DIR. T. KERR DESIGNED BY LINGUO
 NEPTUNE THEATRE FEB/84
 FLOOR PLAN 1/2" = 10' SHET # 1

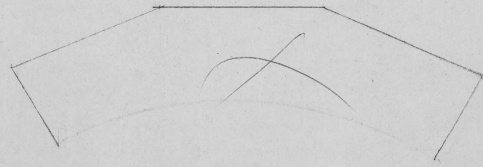
5 1/4" x 6"



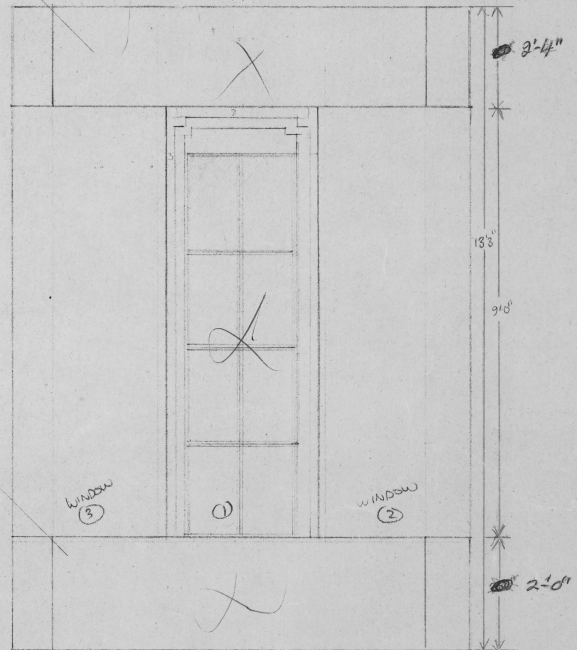
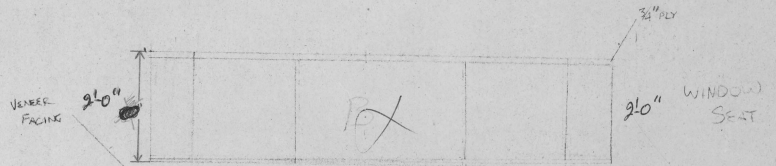
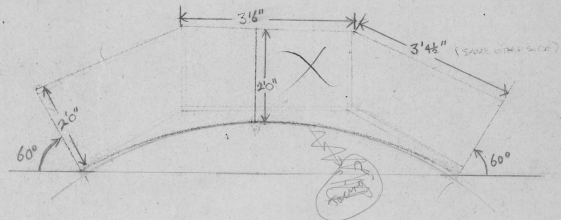
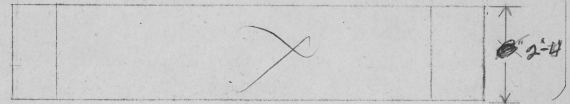
3 WINDOWS (SIT ON TOP OF WINDOW SEAT)



EACH STEP RECESSED 1"



Top of
WINDOWS



PRESENT LAUCHTER

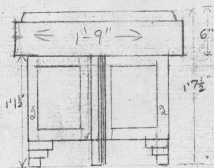
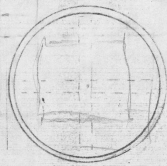
DIR: T. KEFF

DESIGNER JIM GUEDO

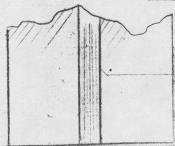
NEPTUNE
THEATRE

FEB/84 1/2" = 1'0"

#5



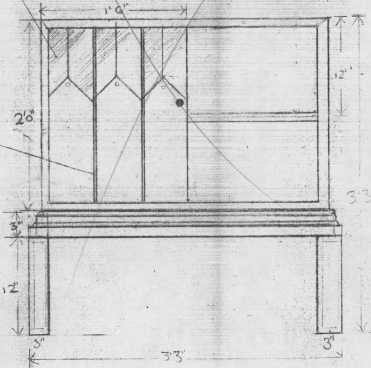
END TABLE



3/4 1/4 3/4

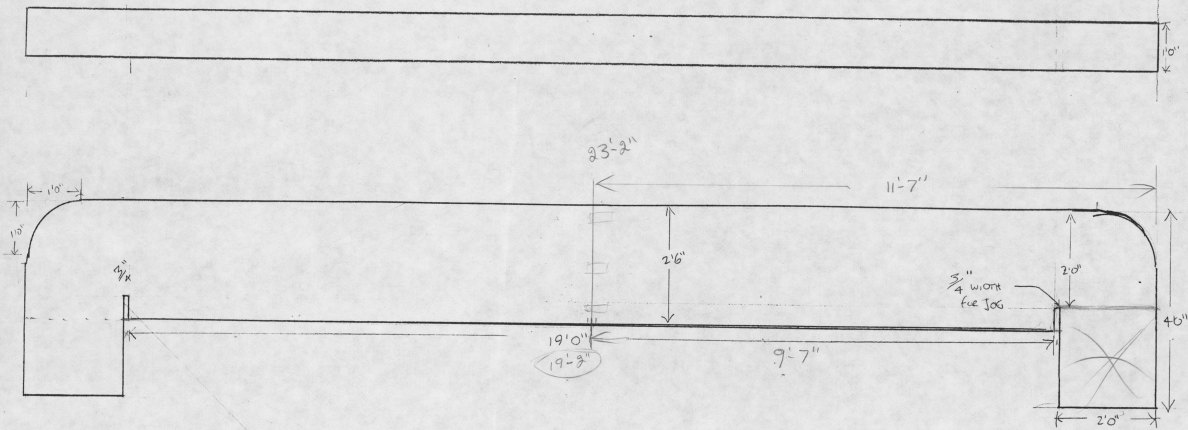
FULL SCALE SIDE VIEW OF LEG PANEL

MYLAR FACING



DRINKS TABLE
MYLAR Top

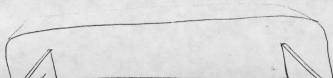
"PRESENT
DIR: T. W. G.
JIM GUEST



LOG WHERE HEADER FITS INTO PLAT STRUCTURE

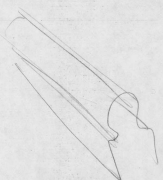
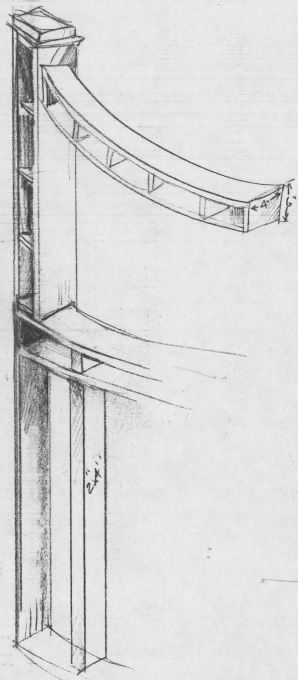
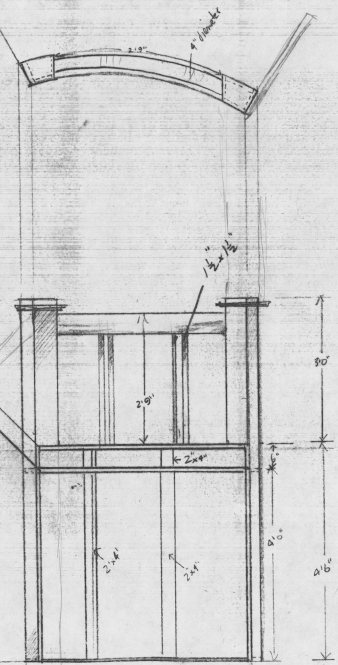
REVISED "PRESENT LIGHTER
HEADER NEPTUNE THEATRE W

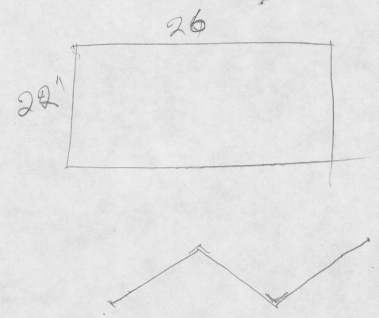
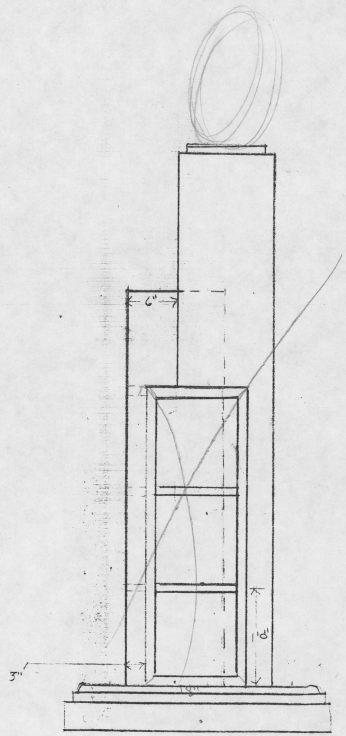
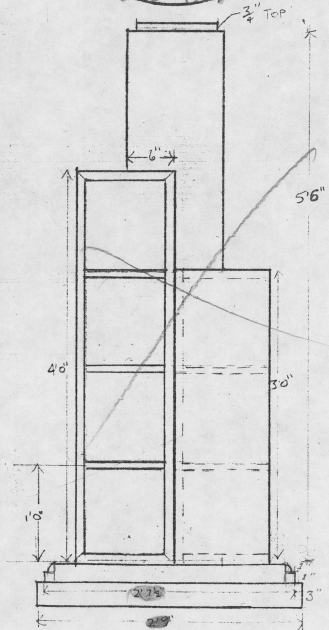
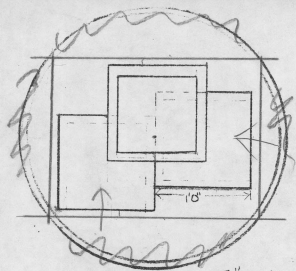
$\frac{1}{2}'' = 1$ FOOT
SCALE



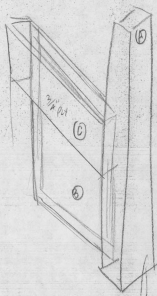
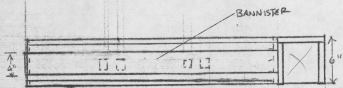
① ADD A SIMILAR CURVE TO ② 6" HIGHER

② EXISTING PLYWOOD CURVE

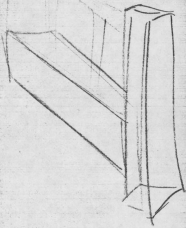
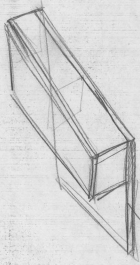
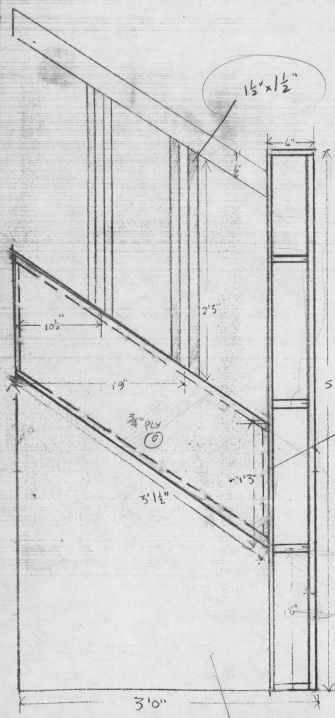




"PRESENT LAUGHTER" BOXCASE
 NEPTUNE THEATRE, HALIFAX
 DESIGN: JIM GUDDO



15' x 1 1/2"

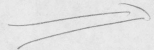
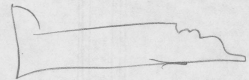
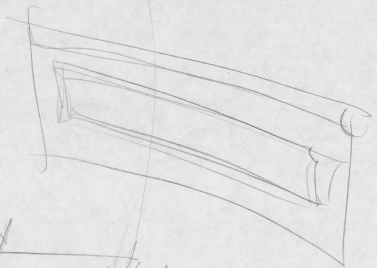
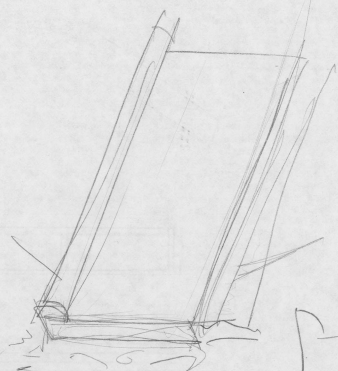
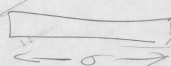


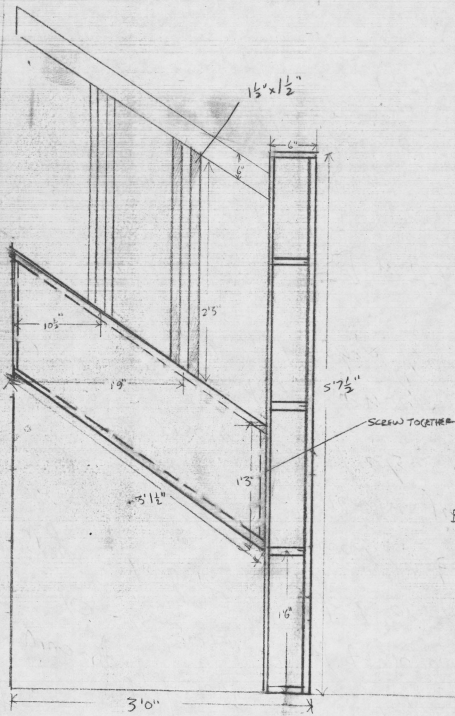
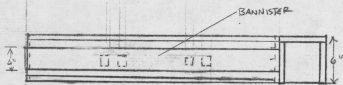
SCREW TOGETHER AND

BACK VIEW
BALLUSTRADE #8
'REVISION'

"PRESENT LAUGHER"

$\frac{1}{4}$
 $\frac{3}{4}$
 $\frac{1}{4}$

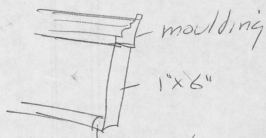




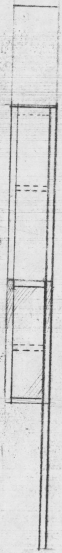
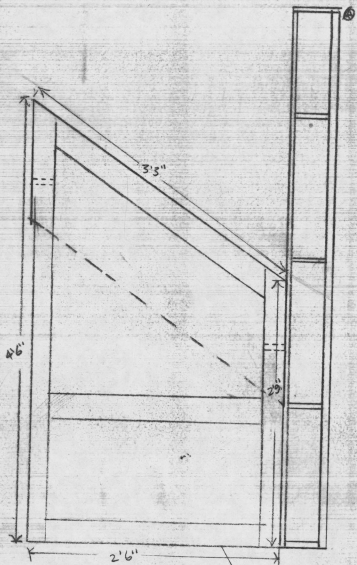
BACK VIEW
 BALLSTRADE #8
 "REVISION"
 "PRESENT"

HNL.

I was up till about 3 so I maybe in a bit late - 10 - 10:30 ish. Tried to do all the painting that hour - along with the work likes being masked by the flats - that I can't really judge consistency. Will be in to discuss this - I also left the plans for the stairway - should be enough. Also, the brackets are laid out on one table, in the shop (lower bracket



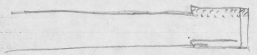
will do rest of moulding ^{1/4 round} outline later. 5, in
(today - this morning)



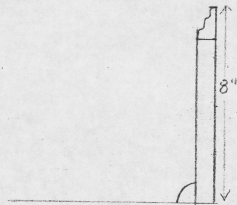
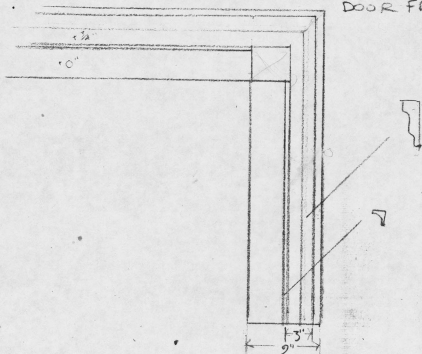
SIDEVIEW
of US PORTION of BALLISTRAD
AND T.V. FLAT (OMITTING BANNISER)

FRONT FACING T.V. FLAT CONSTRUCTION

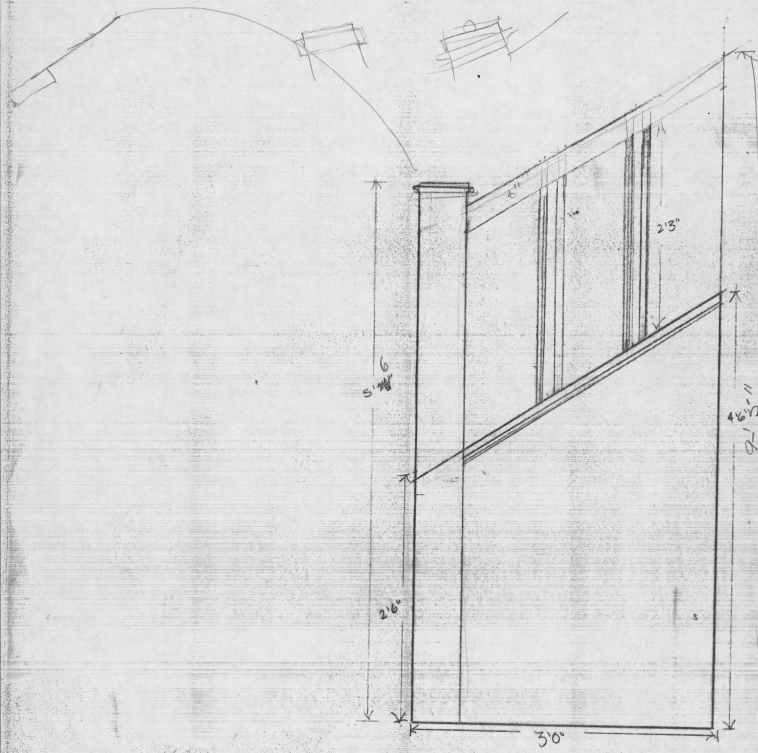
(E)

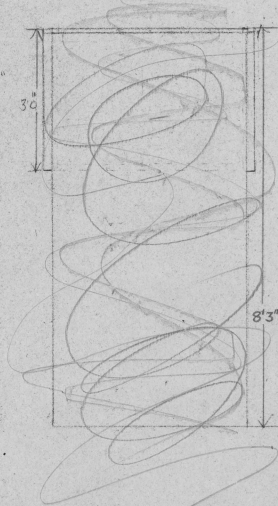
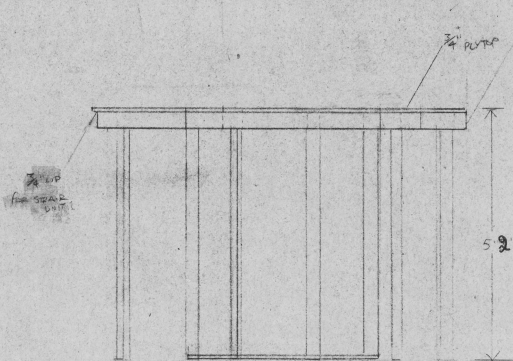
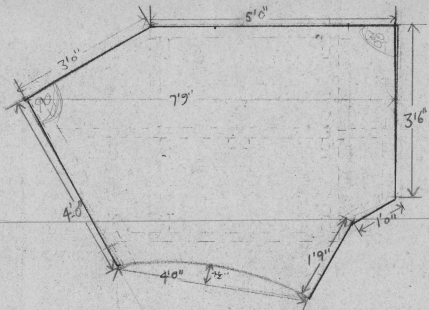


DOOR FRAMES

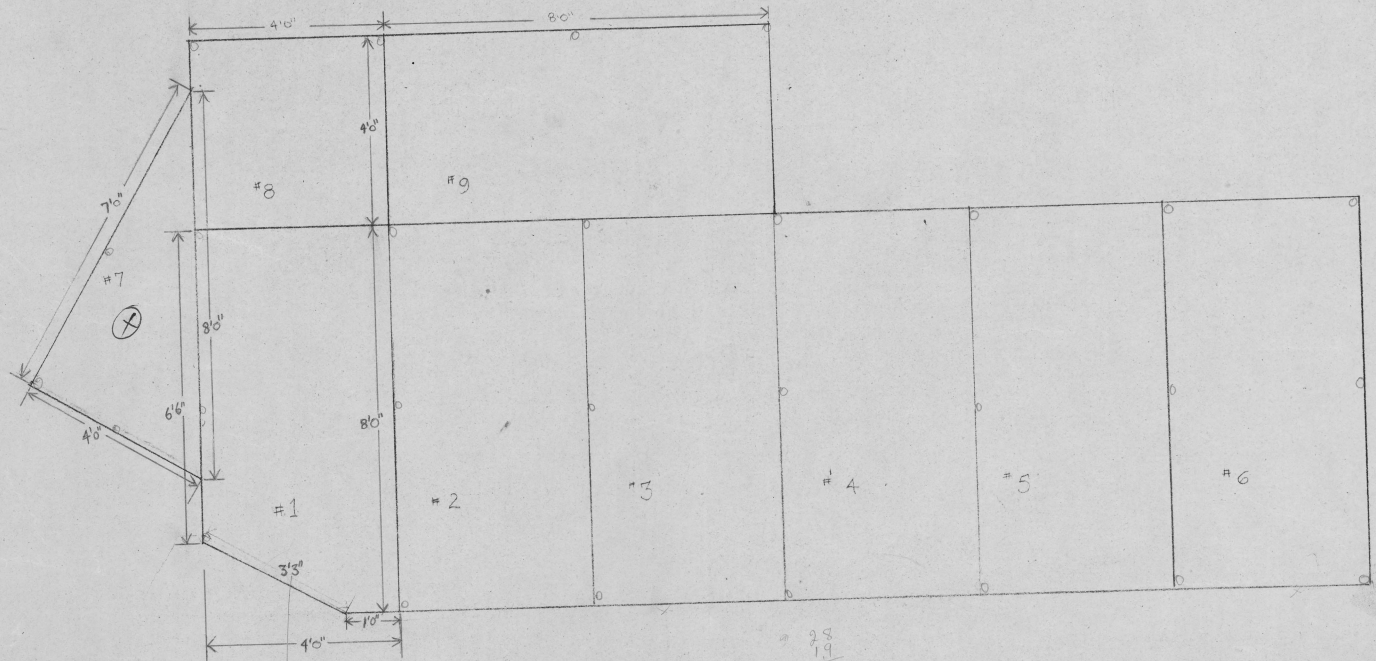


BASE BOARDS





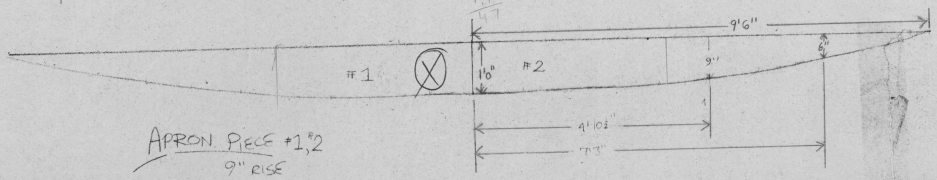
PRESENT LAUGHTER" Upper Stair Unit
 D.R. T. KELL DESIGNER: JIM QUEDU
 1/8" = 1'0" NEPTUNE THEATRE FEBRET "17



"PRESENT LAUGHTER" STEEL
 RISERS
 #2-6, #9 - 4'x8'
 #1, #7 - SEE PLAN
 #8 - 4'x4'
 ALL RISERS 9" RISE
 SHEET # 2

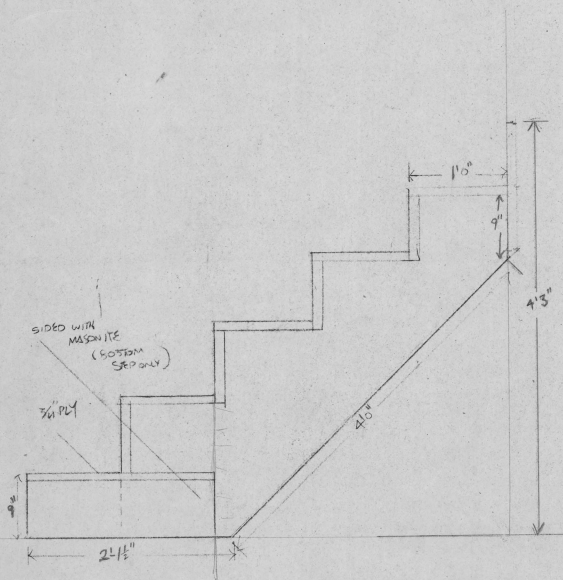
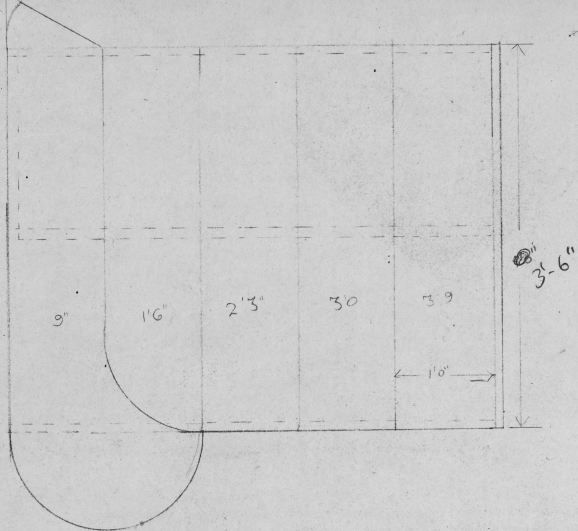
SR

(?)

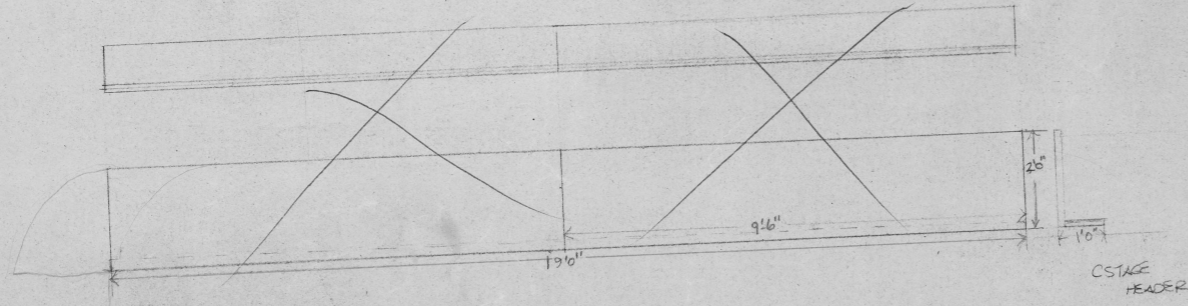
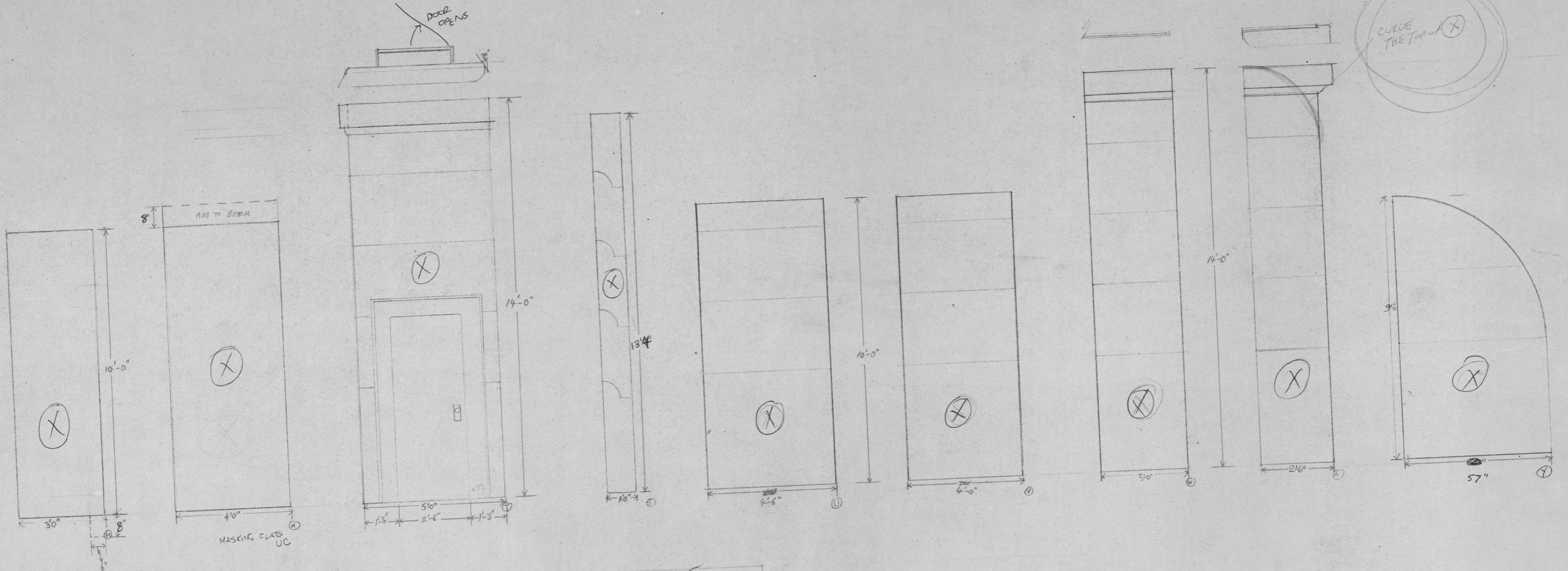


APRON PIECE #1, #2
 9" RISE

SL

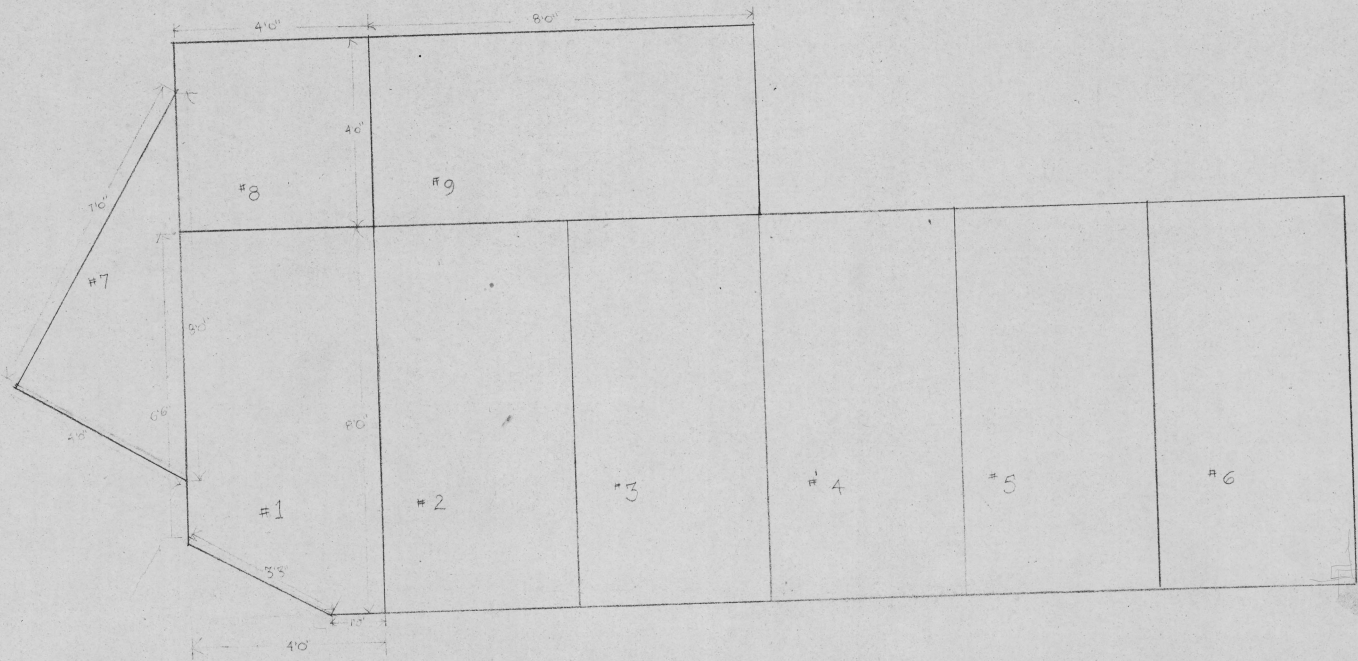


PRESENT LAUGHTER NEPTUNE THEATRE
 #1ST STEP UNIT
 JIN GUEDA
 SHEET #
 6



REMAINING FLATELEVATIONS
 AND HEADER $\frac{1}{2}'' = 1'0''$
 PRESENT LAUGHTER
 DIR. TIKER
 DESIGNER J.M.G. 500
 NEPTUNE THEATRE
 FEB/34

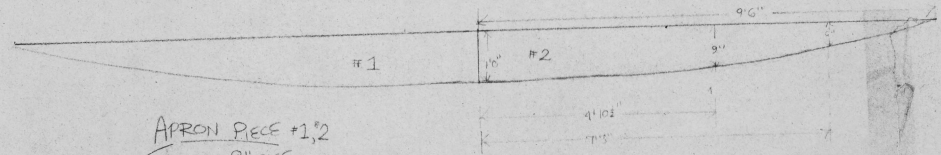
SHEET
 # 4



"PRESENT LAUGHTER" BY JIM
 RISERS
 #2-6, #9 - 4'x8'
 #1, #7 - SEE PLAN
 #8 - 4'x4'
 ALL RISERS 9" RISE
 SHEET # 2

SR

SL



APRON PIECE #1,2
 9" RISE