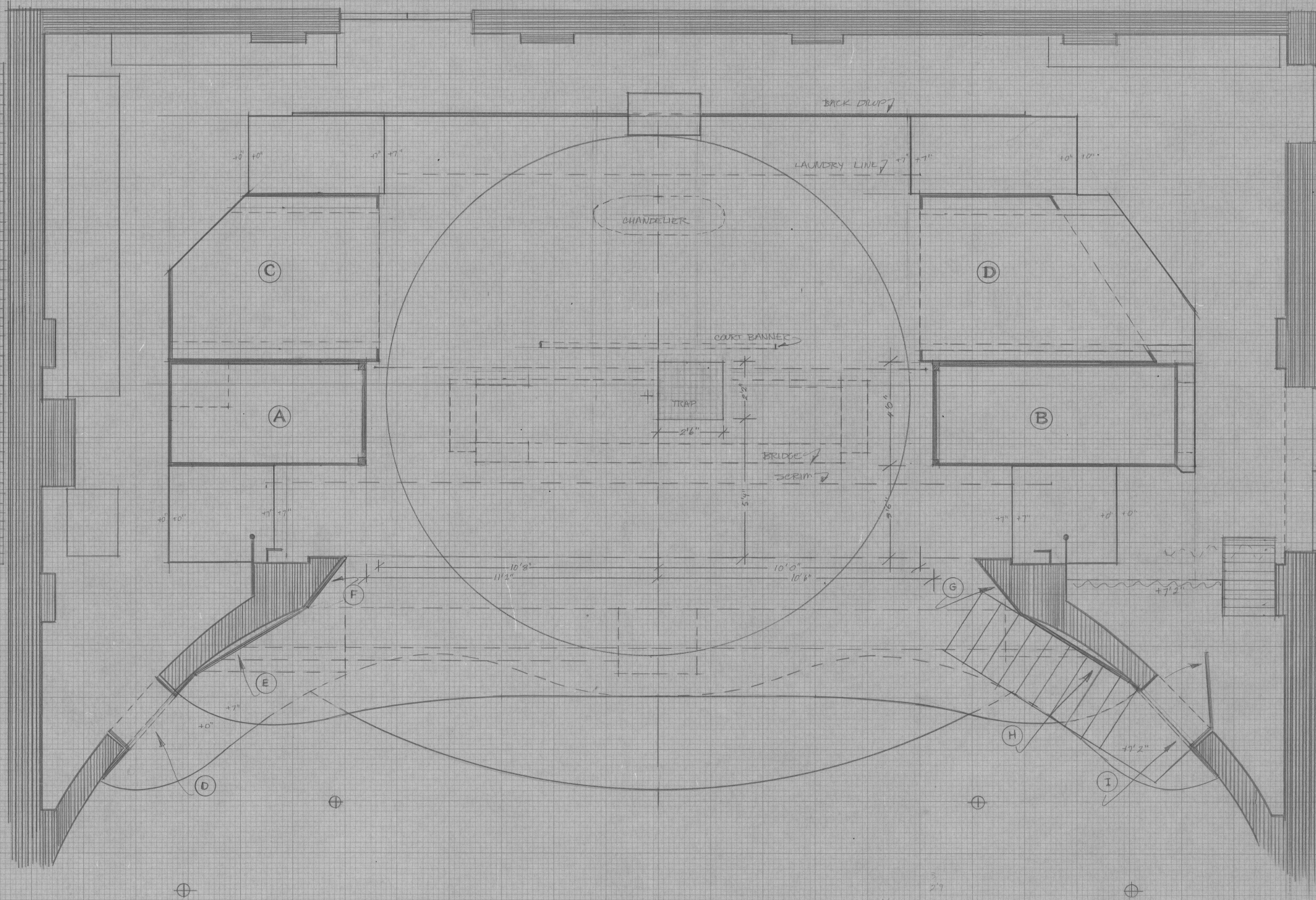


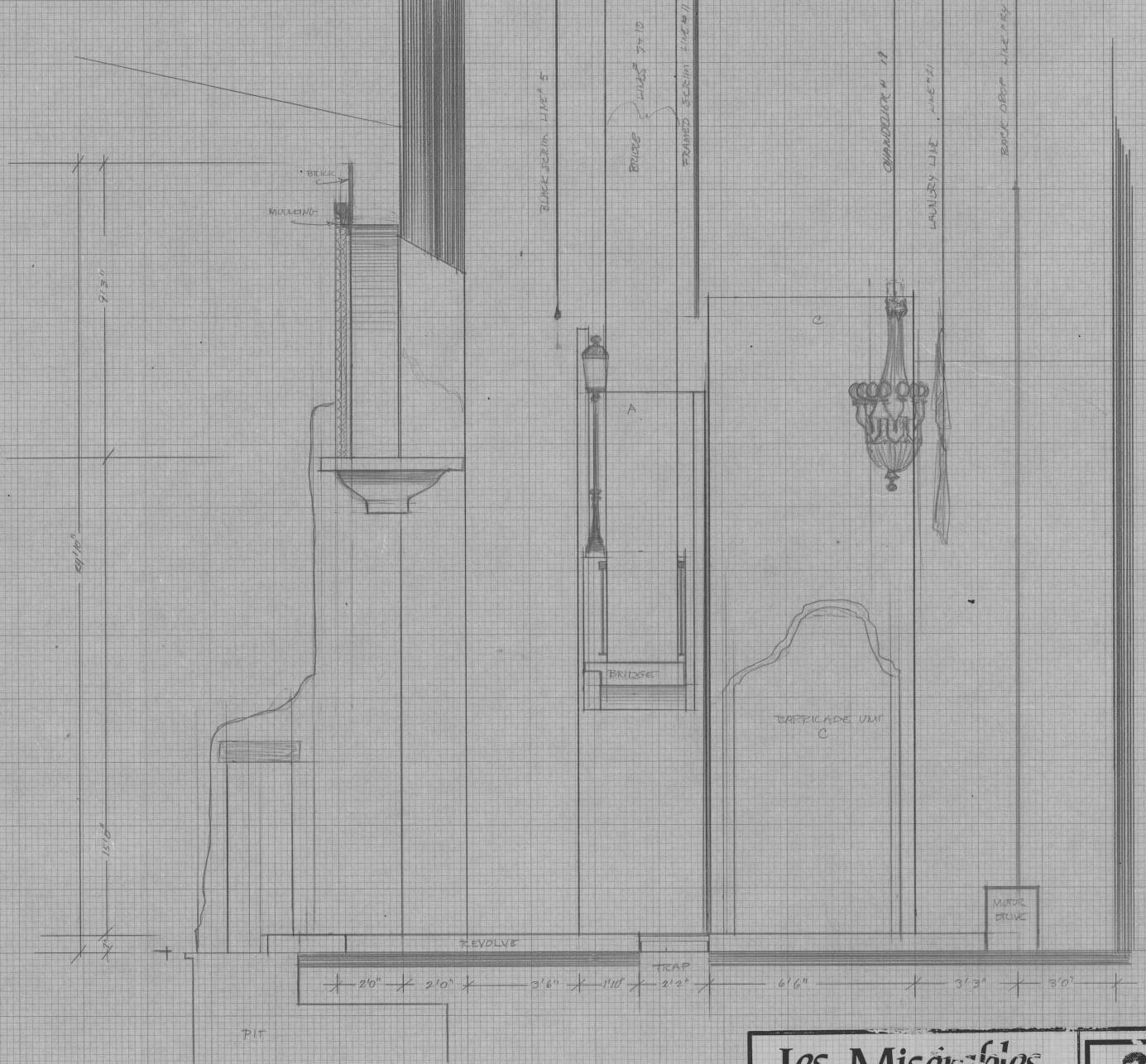
- 26
- 25
- 24 BACK DROP
- 23
- 22
- 21 LAUNDRY LINE
- 20
- 19 CHANDELIER
- 18
- 17
- 16
- 15
- 14
- 13
- 12 COURT BANNER
- 11 FRAMED SCRIM
- 10 BRIDGE
- 9
- 8
- 7 BRIDGE
- 6
- 5 BLACK SCRIM
- 4
- 3
- 2
- 1 FIRE CURTAIN



Les Misérables
 NEPTUNE THEATRE FEB/93
 DIRECTED BY: LINDA MOORE
 DESIGNED BY: BRIAN PERCHALUK
 GROUND PLAN
 SCALE: 1/2" = 1'-0" P. 1/10

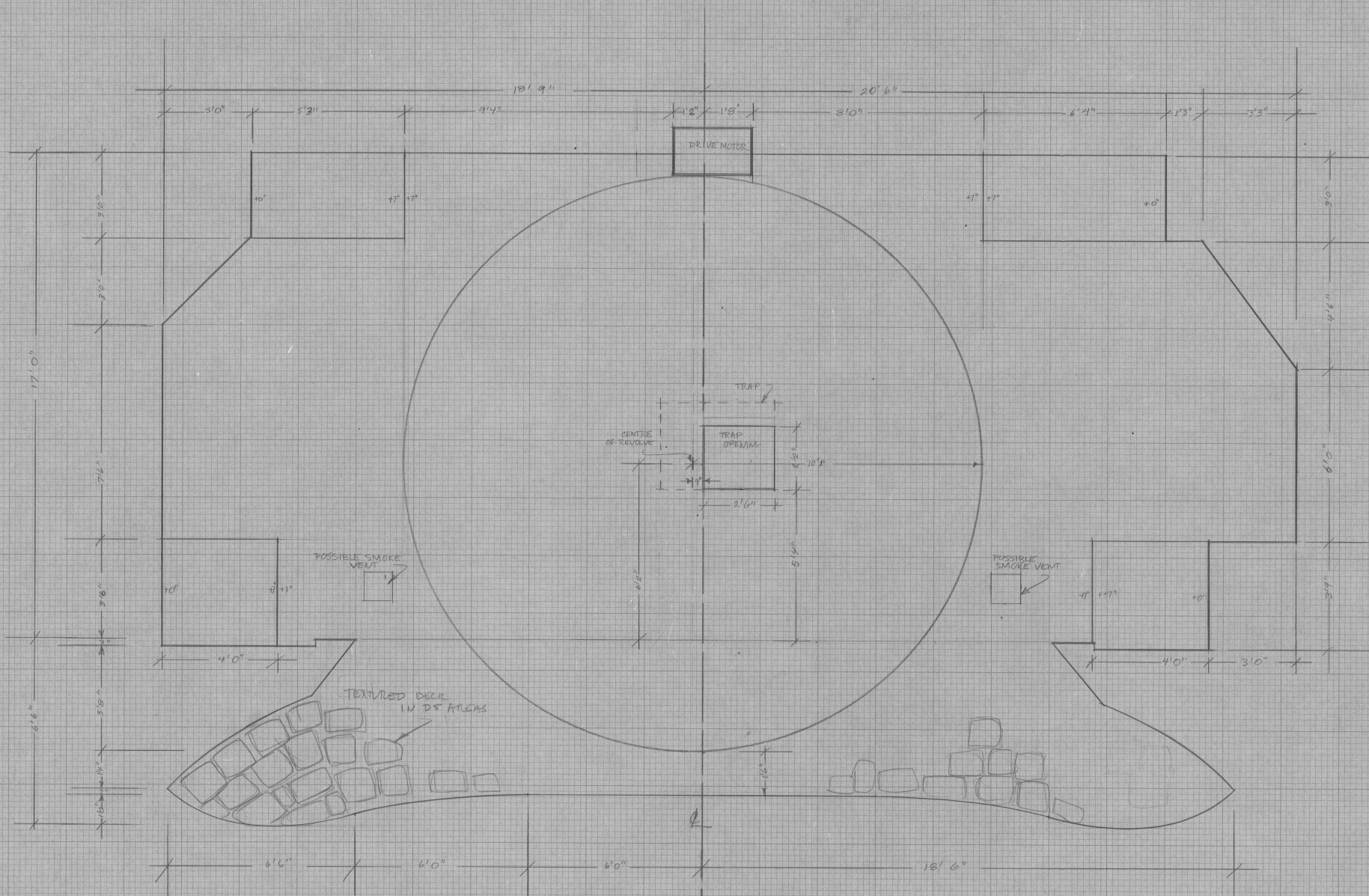


BALCONY RAIL PROJECTOR POSITION

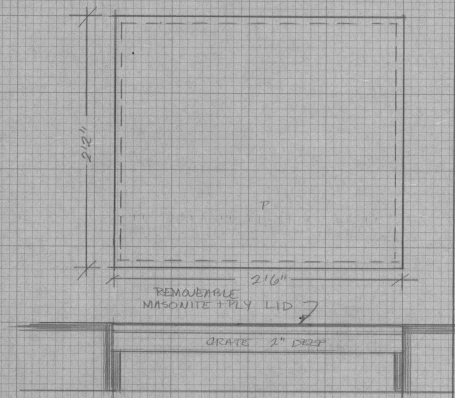


Les Misérables
 NEPTUNE THEATRE FEB/93
 DIRECTED BY: LINDA MOORE
 DESIGNED BY: BRIAN PERCHALUK
 SECTION
 SCALE: 1/2" = 1'-0" P. 2/10





TRAP DETAIL SCALE: 1/2" = 1'-0"

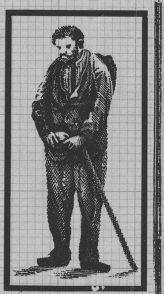


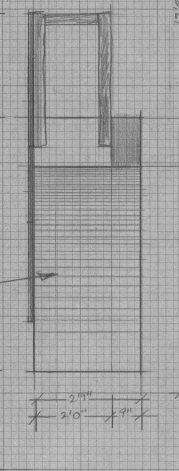
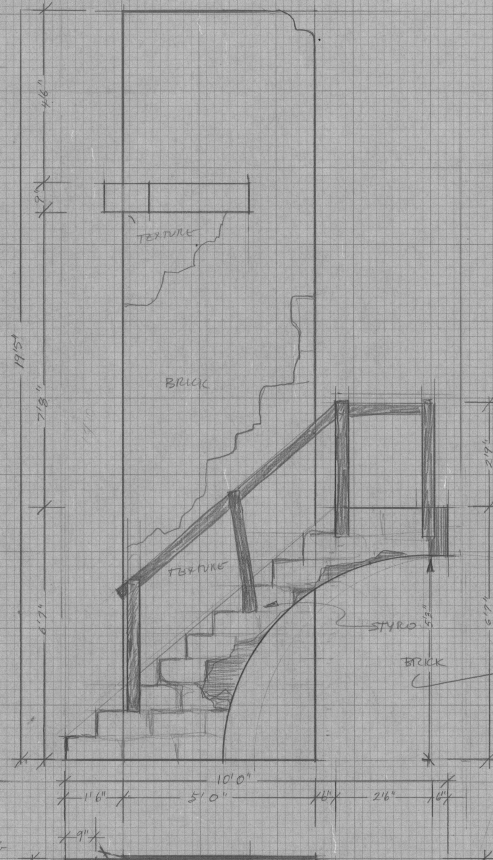
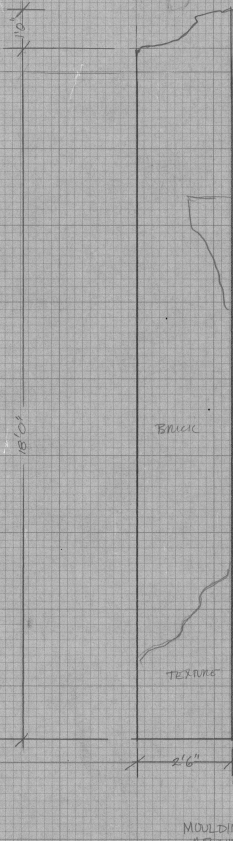
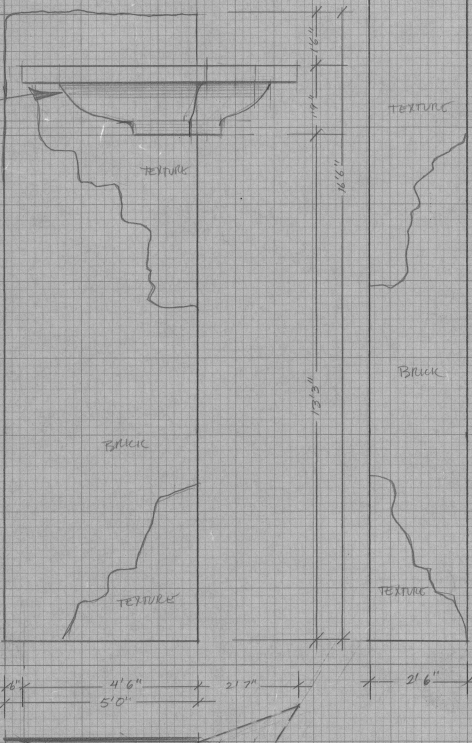
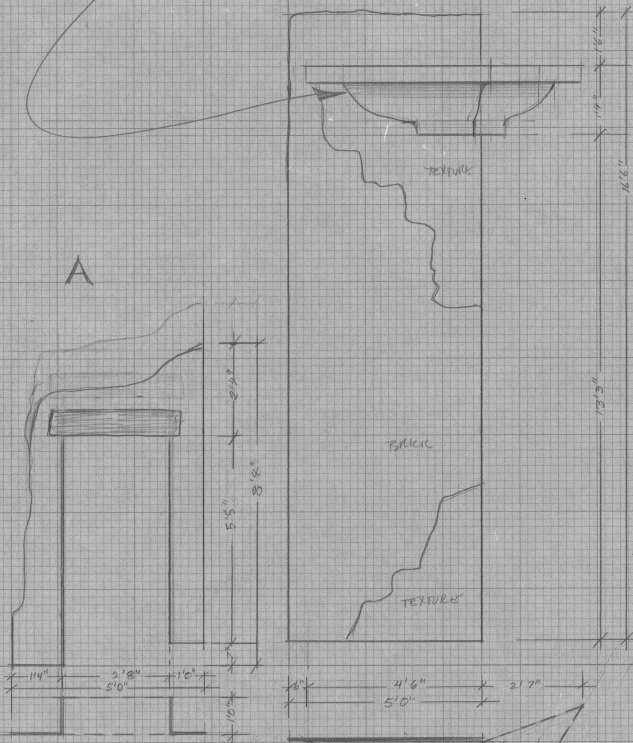
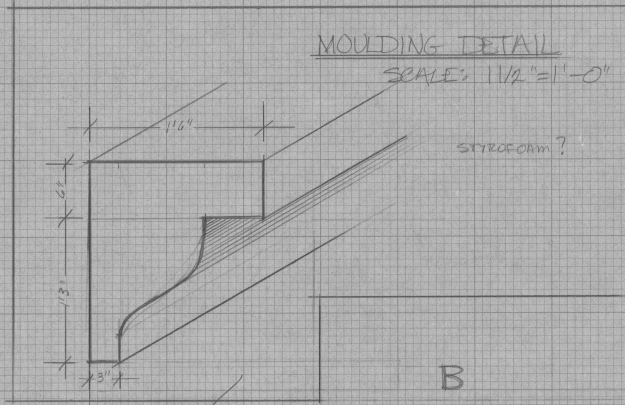
- LID AND GRATE ARE REMOVABLE
- LID MUST BE REMOVED BEFORE OR DURING BARRICADE SC.
- GRATE MAY BE OF METAL OR HARDWOOD 1" X 2" STOCK WITH HOLE APX 2" - 3" SQUARE

NOTES

- DECKING IS APX 7" HIGH
- DECKING OVERHANGS PIT AND AUDIENCE
- OPENING IS CUT IN REVOLVE OVER TRAP
- DECKING IS COVERED IN MASONITE
- POSSIBLE SMOKE VENT POSITIONS ARE INDICATED
- TEXTURE IN DS AREAS TO LOOK LIKE PAVING STONES.

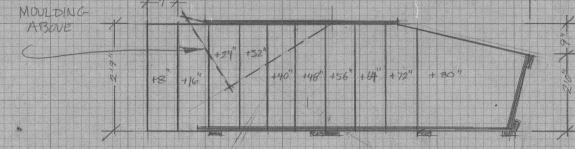
Les Misérables
 NEPTUNE THEATRE FEB/93
 DIRECTED BY: LINDA MOORE
 DESIGNED BY: BRIAN PERCHALUK
 DECKING LAYOUT
 SCALE: 1/2" = 1'-0" P. 3/10





PLANE CONSTRUCTION

LOWER JULIETTE DOOR MAY WANT TO BE COVERED IN STYRO TO ALLOW FOR SOUND PENETRATION - SEE CHARLEY

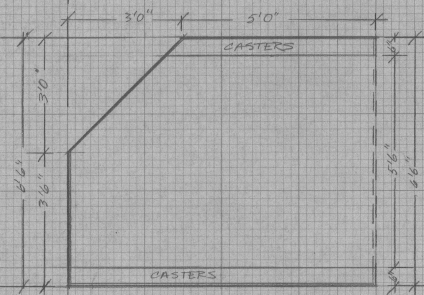
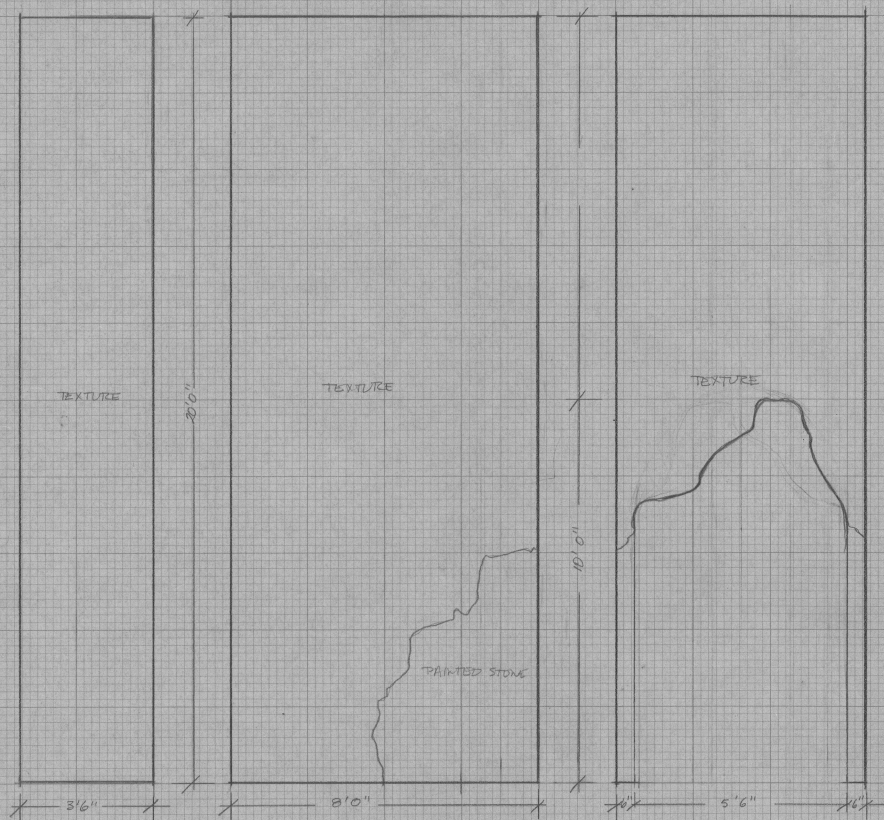


- STAIRS SIT ON 7" DECK AND RAISE TO FLOOR OF UPPER JULIETTE
- FACES OF STAIRCASE WILL BE TEXTURED WITH STYRO FOAM AND VACUFORM BRICK
- FINISHED DIMENSIONS ARE SHOWN
- PLATS ARE CLAD IN VACUFORM BRICK AND TEXTURE

* PLEASE CHECK ACTUAL DIMENSIONS OF THEATRE WHEN BUILDING AND MAKE NECESSARY ADJUSTMENTS

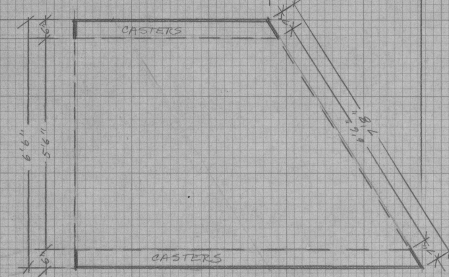
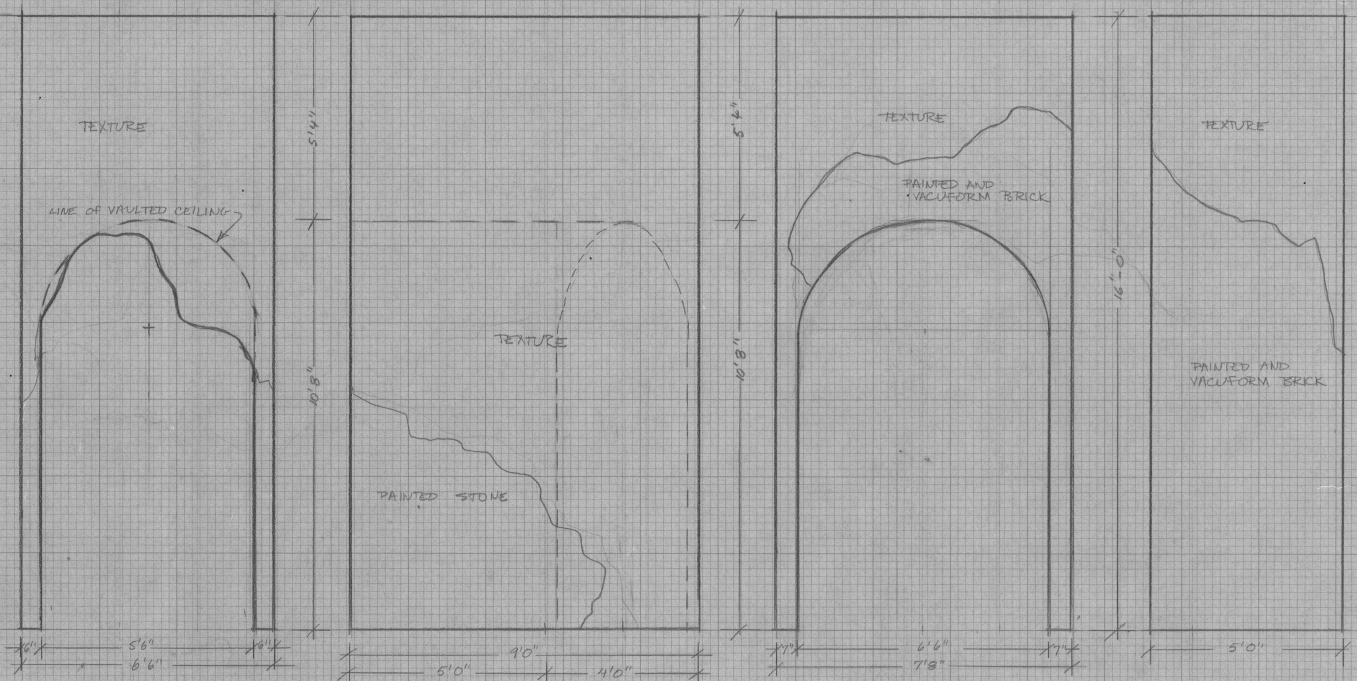
<h1>Les Misérables</h1>		
NEPTUNE THEATRE FEB/93		
DIRECTED BY: LINDA MOORE DESIGNED BY: BRIAN PERCHALUK		
PROSCENIUM FACADE PLATTAGE AND STAIRS		
SCALE: 1/2" = 1'-0"	P. 5/10	

C



- BARRICADE UNITS C+D LOCK INTO TOWER UNITS C+D AND MOVE IN UNISON AS WELL AS INDEPENDENTLY
- TOWER UNITS C+D ARE CASTERED AND MOVE ON AND OFF STAGE
- UNIT D REVOLVES AND IS VISIBLE ON ALL 4 SIDES
- INTERIOR TUNNEL OF UNIT D IS VAULTED AND SHEETED WITH LUON AND TEXTURED WITH BITS OF VACUFORM BRICK
- BARRICADE UNIT D WILL PASS COMPLETELY THROUGH TOWER UNIT C
- UNITS WILL NEED TO LOCK INTO POSITIONS
- SHAPE OF ONSTAGE OPENINGS IN TOWERS WILL BE DETERMINED BY BARRICADE UNITS
- UNITS ARE TEXTURED AS INDICATED
- TOP OF UNIT D IS CAPPED

D



Les Misérables

NEPTUNE THEATRE FEB/93

DIRECTED BY: LINDA MOORE
DESIGNED BY: BRIAN PERCHALUK

US TOWERS

SCALE: 1/2" = 1'-0" P. 7/10

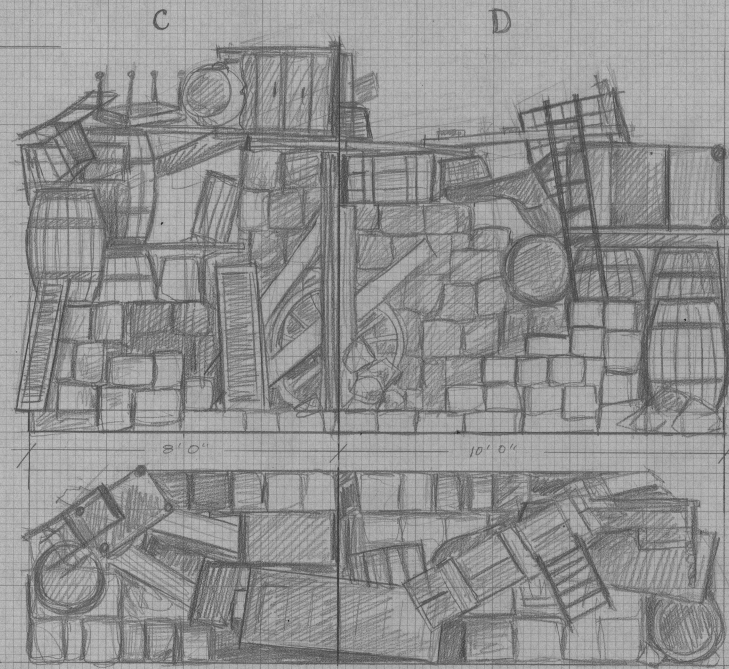


NOTES

- BARRICADES CONSIST OF CASTERED BASE UNITS AND DRESSING
- BASE UNITS ARE CASTERED AND MOVE ON AND OFF STAGE
- FINISHED DIMENSIONS ARE INDICATED ON BASE UNITS
- BASE UNITS MAY BE CONSTRUCTED OF STYROFOAM BLOCKS OR OF BOARDS CLAD IN STYRO ON ALL VISIBLE SIDES
- STYRO WILL BE CARVED AND COMED TO LOOK LIKE STRAGGED PAVING STONES
- DRESSING WILL BE ADDED TO BASES TO COMPLETE THE UNITS
- ALL DRESSING WILL NEED TO BE WELL SECURED TO BASES
- HOPEFULLY MUCH OF THE DRESSING WILL BE FOUND OR TAKEN FROM STOCK. SOME PIECES MAY NEED TO BE BUILT.
- BARRICADES TELESCOPIC OUT OF TOWER UNITS AND LOCK TOGETHER. THE BARRICADES WILL REVOLVE
- ON STAGE FACES OF THE BARRICADE UNITS MUST REMAIN FLAT SO THE SECTIONS WILL JOIN TOGETHER CLEANLY
- ON STAGE OPENINGS OF TOWER UNITS MAY NEED TO BE ADJUSTED TO FIT THE BARRICADE SILHOUETTES TO ALLOW UNITS TO MOVE FREELY THROUGH TOWERS.
- * THE BUILDING OF THESE BARRICADES WILL BE AN ORGANIC PROCESS AND ADJUSTMENTS WILL BE MADE AS NEEDED.
- * UNITS MUST BE MADE TO BE AS SECURE AS POSSIBLE THERE IS A LOT OF IMPROVISED ACTION HAPPENING ON THESE UNITS AND ACTOR SAFETY IS A PRIORITY.

BARRICADE DRESSING

- BARRELS AND KEGS (6-8 VARIOUS SIZES)
- WOODEN CRATES
- DOORS
- SHUTTERS (LOUVERED AND PLANKING)
- PLANKS AND TIMBERS
- WAGON WHEELS
- CHAIRS
- TABLES
- BENCH
- BLOCKS BASKETS, ETC
- LADDERS

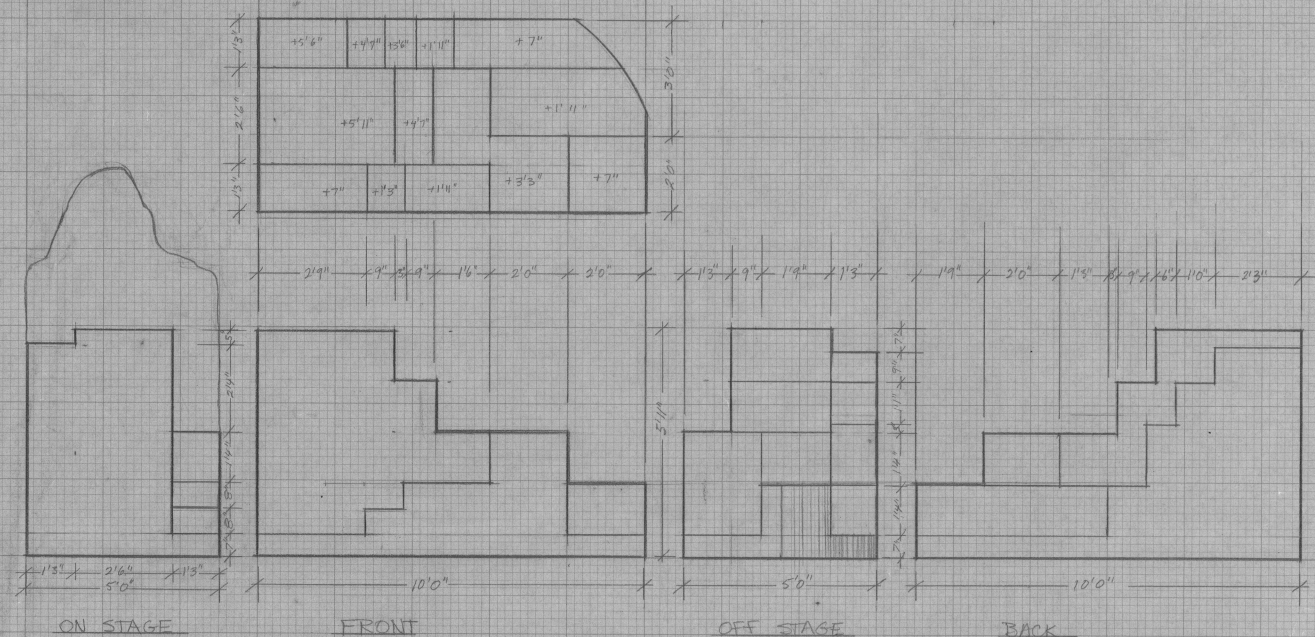
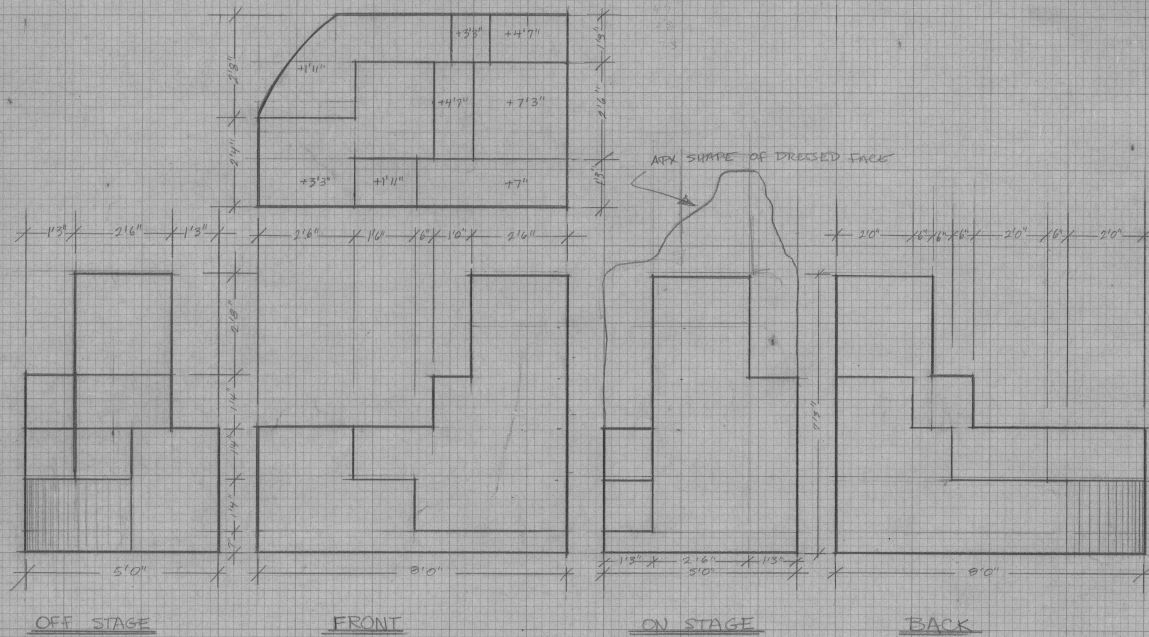


FRONT VIEW

TOP VIEW

PLAN VIEW

PLAN VIEW



Les Misérables

NEPTUNE THEATRE FEB/93

DIRECTED BY: LINDA MOORE
DESIGNED BY: BRIAN PERCHALUK

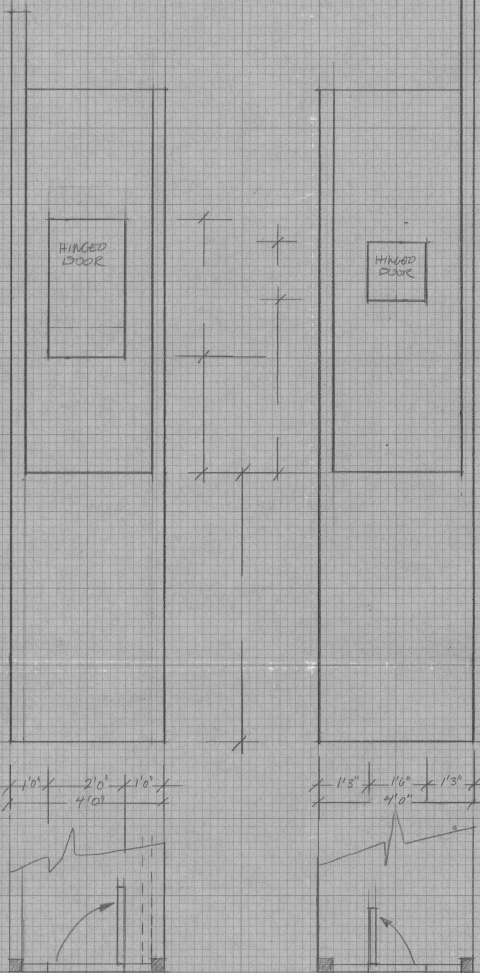
BARRICADE DETAIL

SCALE: 1/2" = 1'-0" | P. 8/10

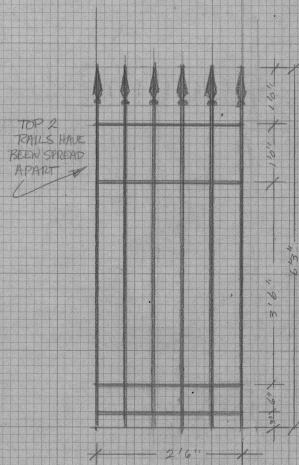


UNIT A
ONSTAGE WALL

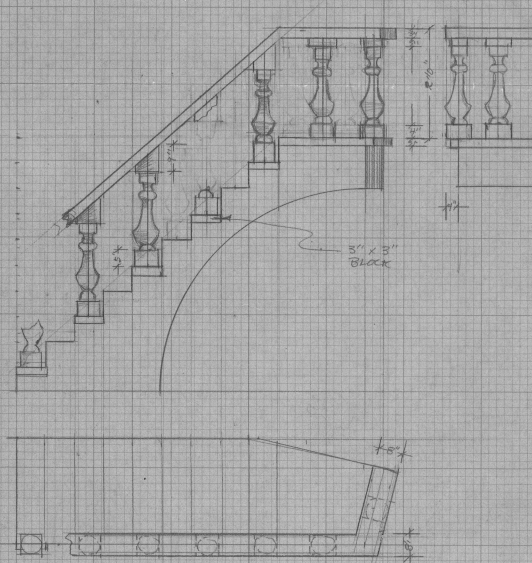
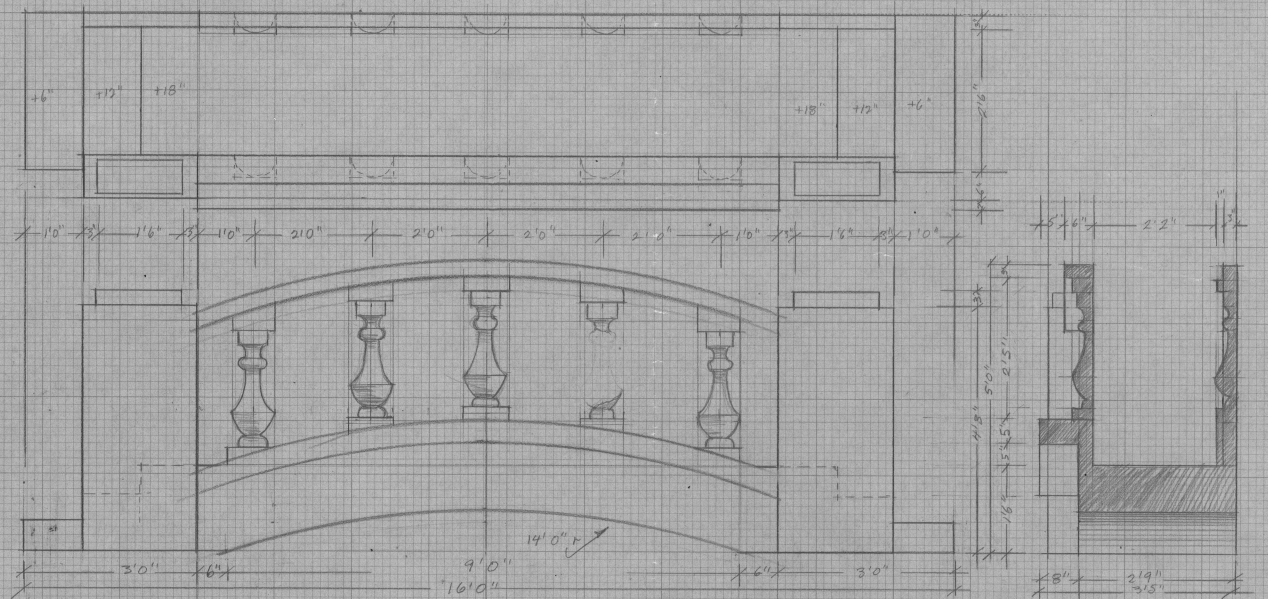
UNIT B
ONSTAGE WALL



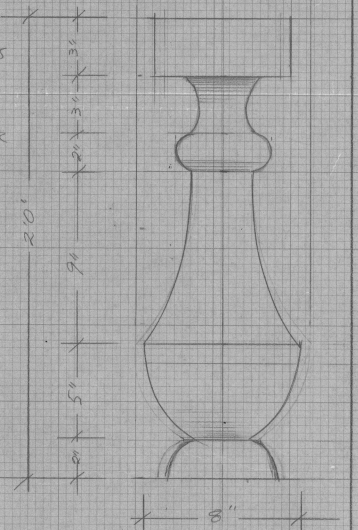
GATE SCALE: 3/4" = 1'-0"



BRIDGE SCALE: 3/4" = 1'-0"

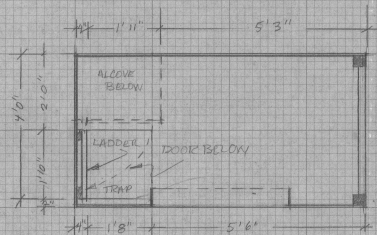


- 1/2-ROUND POSTS ON BRIDGE-UPS AND PS
- WHOLE ROUND POSTS ON STAIR RAILING



BALLUSTRADE POSTS SCALE: 3" = 1'-0"

UNIT A TRAP DOOR ACCESS TO UPPER LEVEL



- TRAP DOOR IN FLOOR OF 2ND LEVEL HINGED ON PS EDGE AND DROPS DOWN CLEARING LADDER ON INSIDE OF OFF STAGE WALL
- ALCOVE DOOR IS ADJUSTED TO CLEAR LADDER WHEN OPEN
- LADDER SHOULD EXTEND UP INTO UPPER LEVEL

Les Misérables

NEPTUNE THEATRE FEB/93

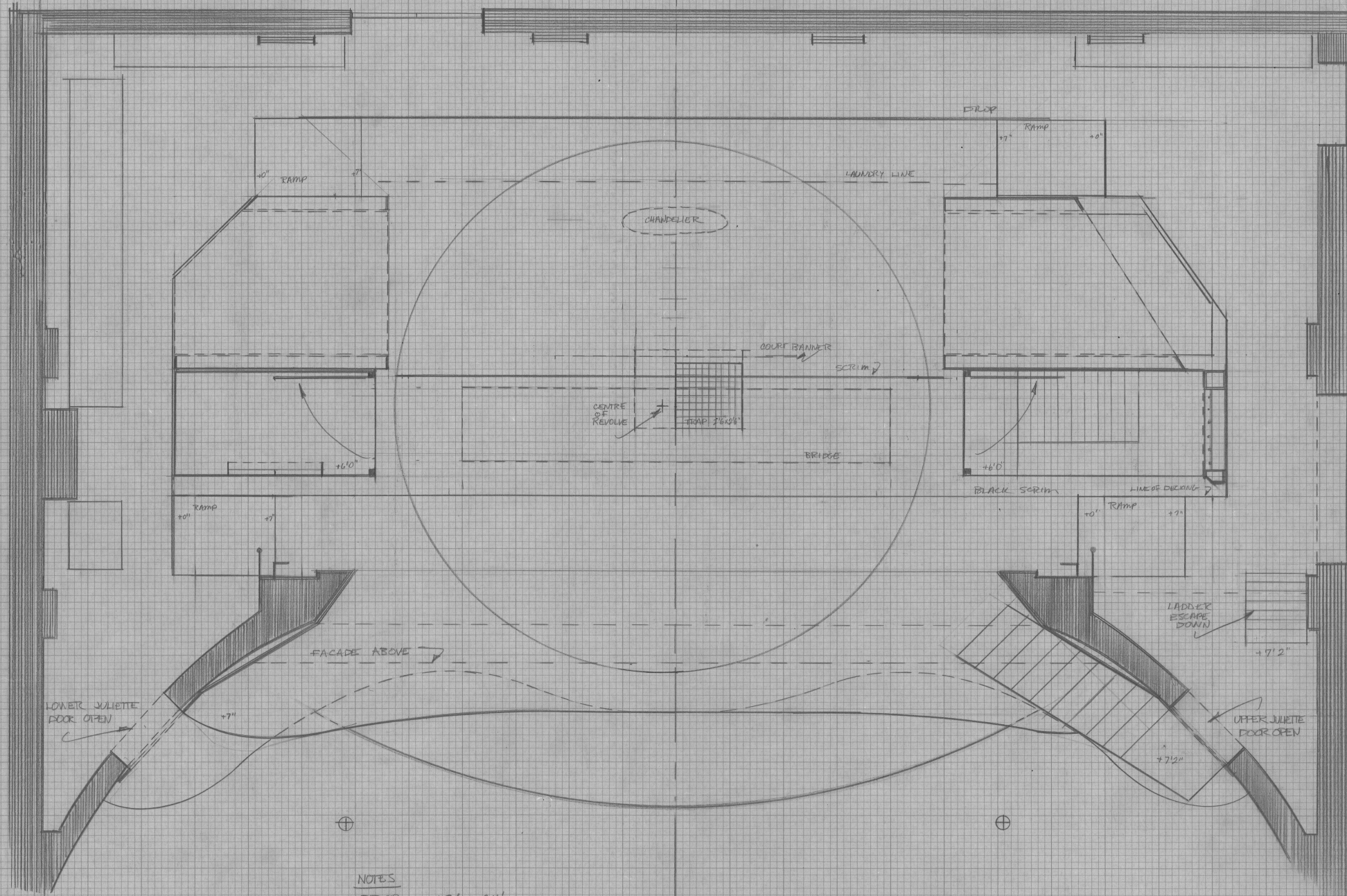
DIRECTED BY: LINDA MOORE
DESIGNED BY: BRIAN PERCHALUK

REVISED DRAWINGS
MARCH 10/94

SCALE: 1/2" = 1'-0"

P.





- #24 DROP
- #21 LAUNDRY LINE
- #19 CHAMBER
- #12 COURT BANNER
- #11 SCRIM
- #10
- } BRIDGE
- #7
- #5 BLACK SCRIM
- #1 FIRE CURTAIN

NOTES

DROP - 28' x 24'

- LOWER SECTION 8'-12' WILL BE HAND SURFACED FLATTAGE
- UPPER SECTION WILL BE BLACK SCRIM

BACKWALL - MAY BE PAINTED.

SCRIM - SCRIM ON LINE #11 IS BLACK SCRIM ON A FRAME 20' x 24'

PROJECTIONS - TITLES WILL BE PROJECTED ONTO DS BLACK SCRIM

FOG - FOG AND SMOKE WILL BE USED - SMOKE MAY WANT TO BE CHANNELLED UNDER DECKED AREA SO IT RISES FROM THE FLOOR

JULIETTE DOORS

- UPPER & L AND LOWER STR JULIETTE DOORS MAY BE USED

LES MISÉRABLES

NEPTUNE THEATRE JAN/94

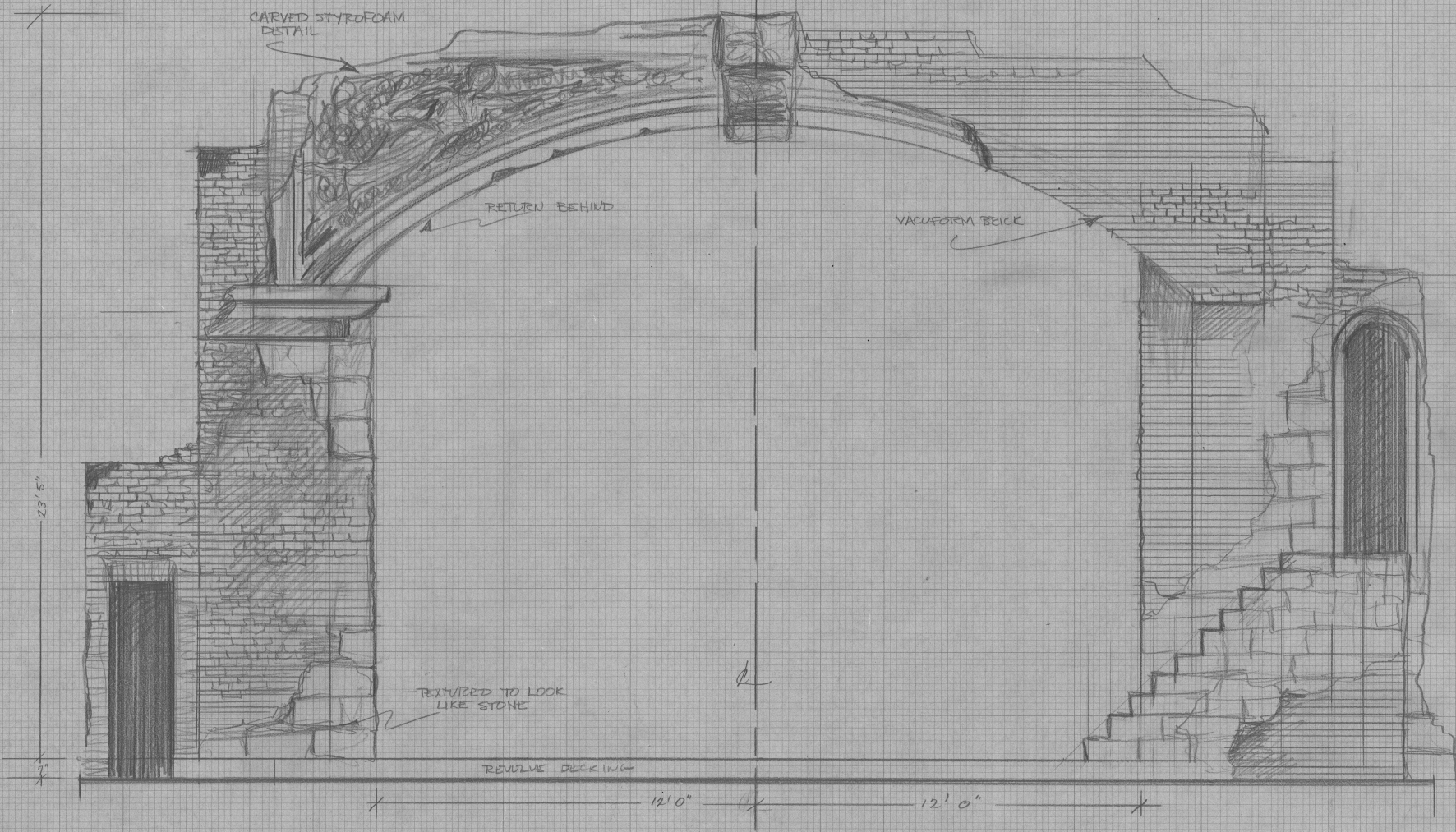
DIRECTED BY: LINDA MOORE

SET DESIGN BY: BRIAN PERCHALK

PRELIMINARY GROUND PLAN

SCALE: 1/2" = 1'-0" | P. 1/4

PROSCENIUM FACADE



LES MISÉRABLES
NEPTUNE THEATRE JAN/94
DIRECTED BY: LINDA MOORE
SET DESIGN BY: BRIAN PERCHALUK
PROSCENIUM FACADE ELEVATION
SCALE: 1/2" = 1'-0" P 2/4

C- DOWN STAGE

C- ON STAGE

D- UP STAGE

D ON STAGE

D- DOWN STAGE

D-OFF STAGE

LES MISÉRABLES

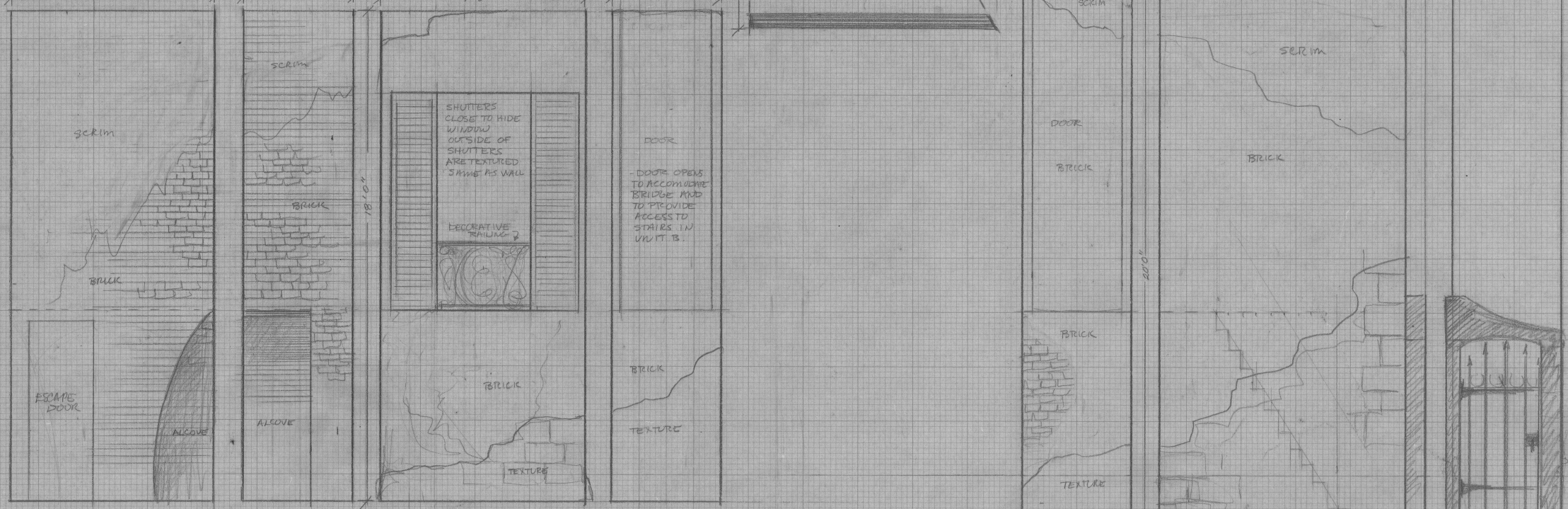
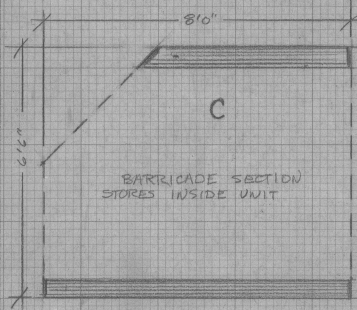
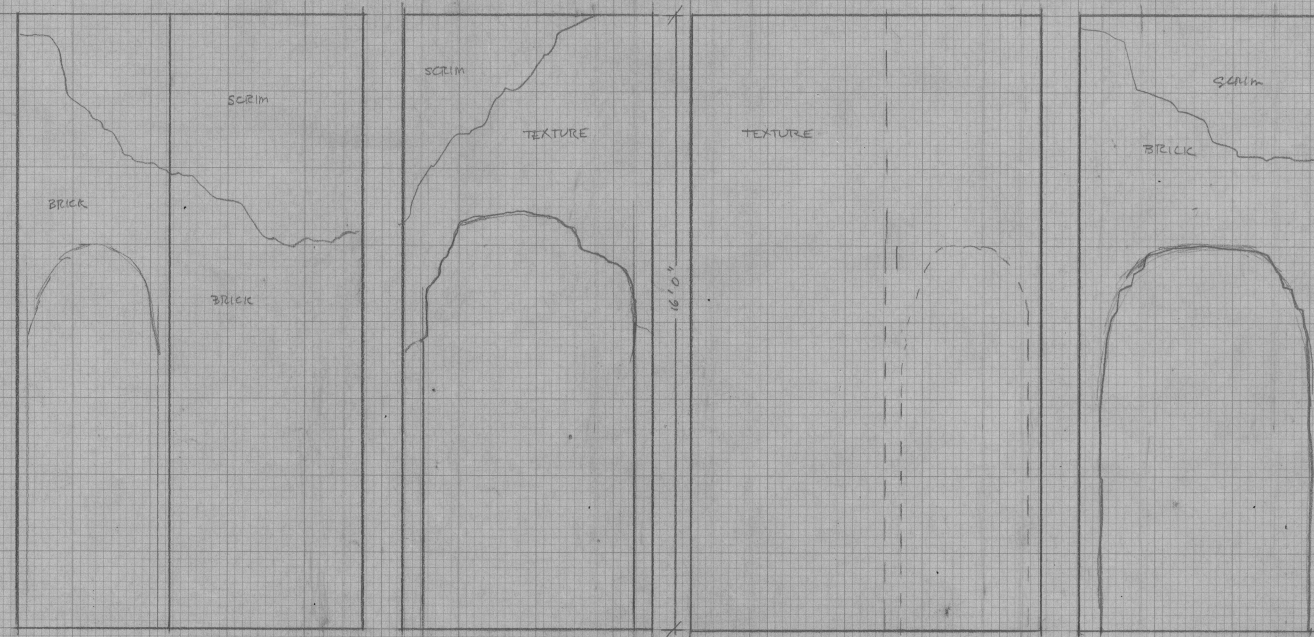
NEPTUNE THEATRE JAN/94

DIRECTED BY: LINDA MOORE

SET DESIGN BY: BRIAN PERCHALUK

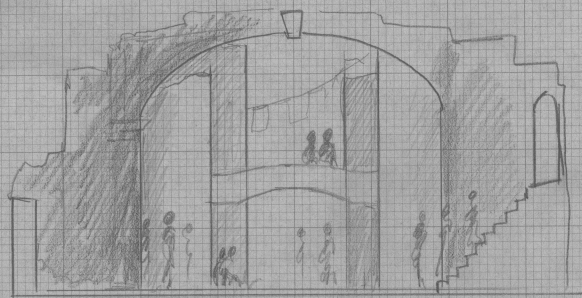
"ROUGH" ELEVATIONS

SCALE: 1/2" = 1'-0" P. 3/4

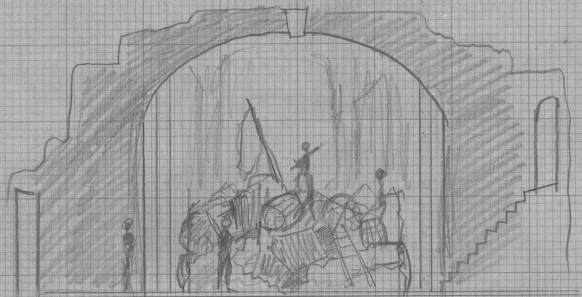
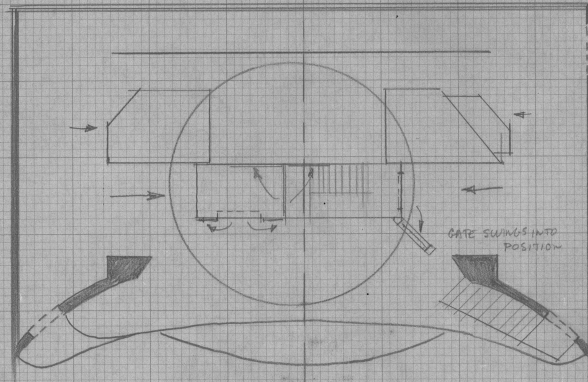
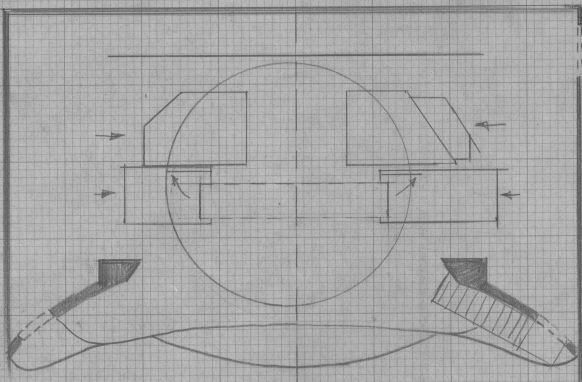


NOTES

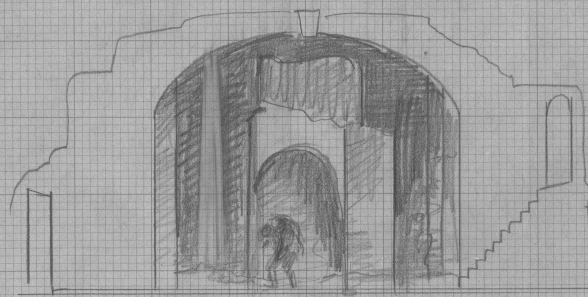
- ALL UNITS TRACK ON AND OFF STAGE
- BARRICADE SECTIONS ARE STORED INSIDE UNITS C+D.
- BARRICADES TRAVEL ON AND OFF STAGE INDEPENDENTLY AND IN TANDUM WITH UNITS C+D.
- DURING SEVERAL SEQUENCE, UNITS A+D LOCK ONTO REVOLVE AND ROTATE - CONSEQUENTLY THEY ARE VISIBLE ON ALL SIDES.
- UNITS SHOULD MOVE AS QUIETLY AND AS DISCREETLY AS POSSIBLE
- GATE ON OFF STAGE SIDE OF UNIT B HINGES ON DS EDGE. DURING THE RUE PLUMET SCENES THE GATE SWINGS DS TO A POSITION 45° FROM DS WALL (SEET. 4)
- UNITS MAY WANT TO BE CONSTRUCTED OF METAL FRAMING - WITH UPPER SECTIONS BEING COVERED IN SCRIM OR SCRIM-LIKE MATERIAL WITH LOWER AREAS BEING CLAD IN TEXTURED WOOD AND VARIOUS BRICK
- UNITS A + B JOIN TOGETHER TO FORM THE RUE PLUMET. UNITS MUST LOCK TOGETHER SECURELY - ACTOR WILL BE CLIMBING UP WALL TO BALCONY.



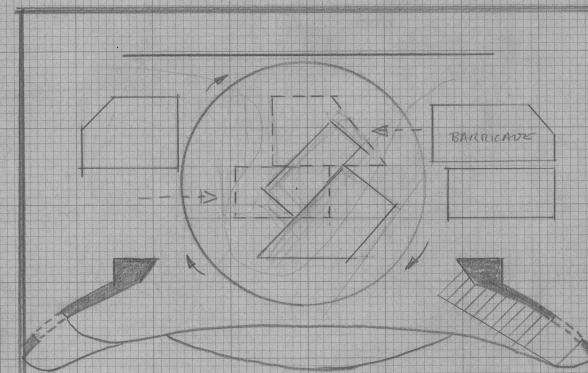
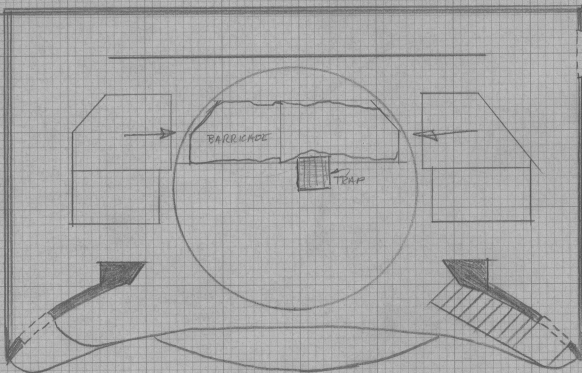
THE STREETS OF PARIS



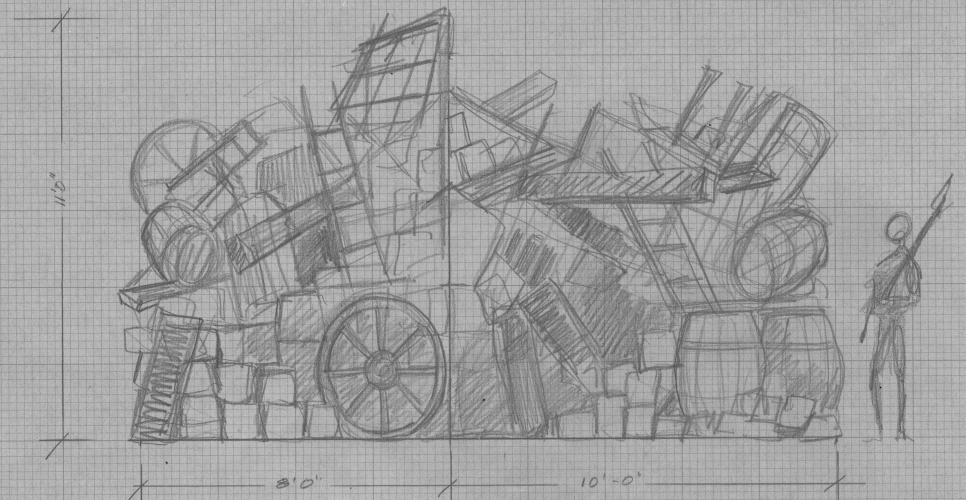
THE BARRICADES



THE SEWERS

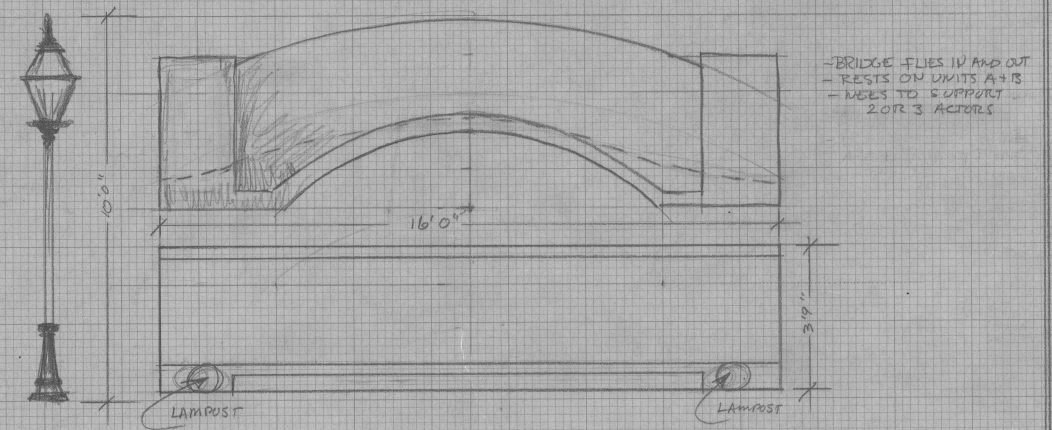


BARRICADE

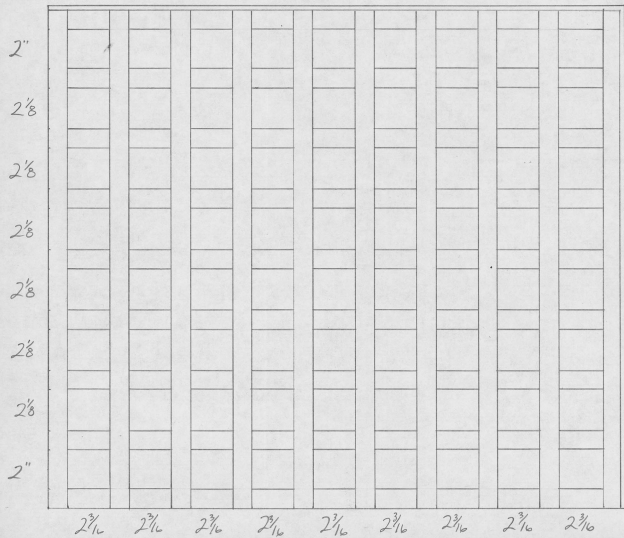


- BASE OF PLATFORM STRESSED TO LOOK LIKE STACKED PAVING STONES
- PILES OF WAGON WHEELS, BARRELS, KEGS, BEAMS, SHUTTERS, DOORS, FURNITURE, GRATES, BOARDS
- ALL OBJECTS MUST BE SECURED AND SAFE FOR ACTORS TO CLIMB ON
- UNITS TRACK ON AND OFF STAGE
- UNITS SHOULD LOCK TOGETHER AND BE SECURED ON REVOLVE

BRIDGE



LES MISÉRABLES
 NEPTUNE THEATRE JAN/94
 DIRECTED BY: LINDA MOORE
 SET DESIGN BY: BRIAN PETCHALUK
 PRELIMINARY DRAWINGS
 SCALE: 1/2" = 1'-0" P. 4/4



- ALL BARS ARE 1 x 1/2"

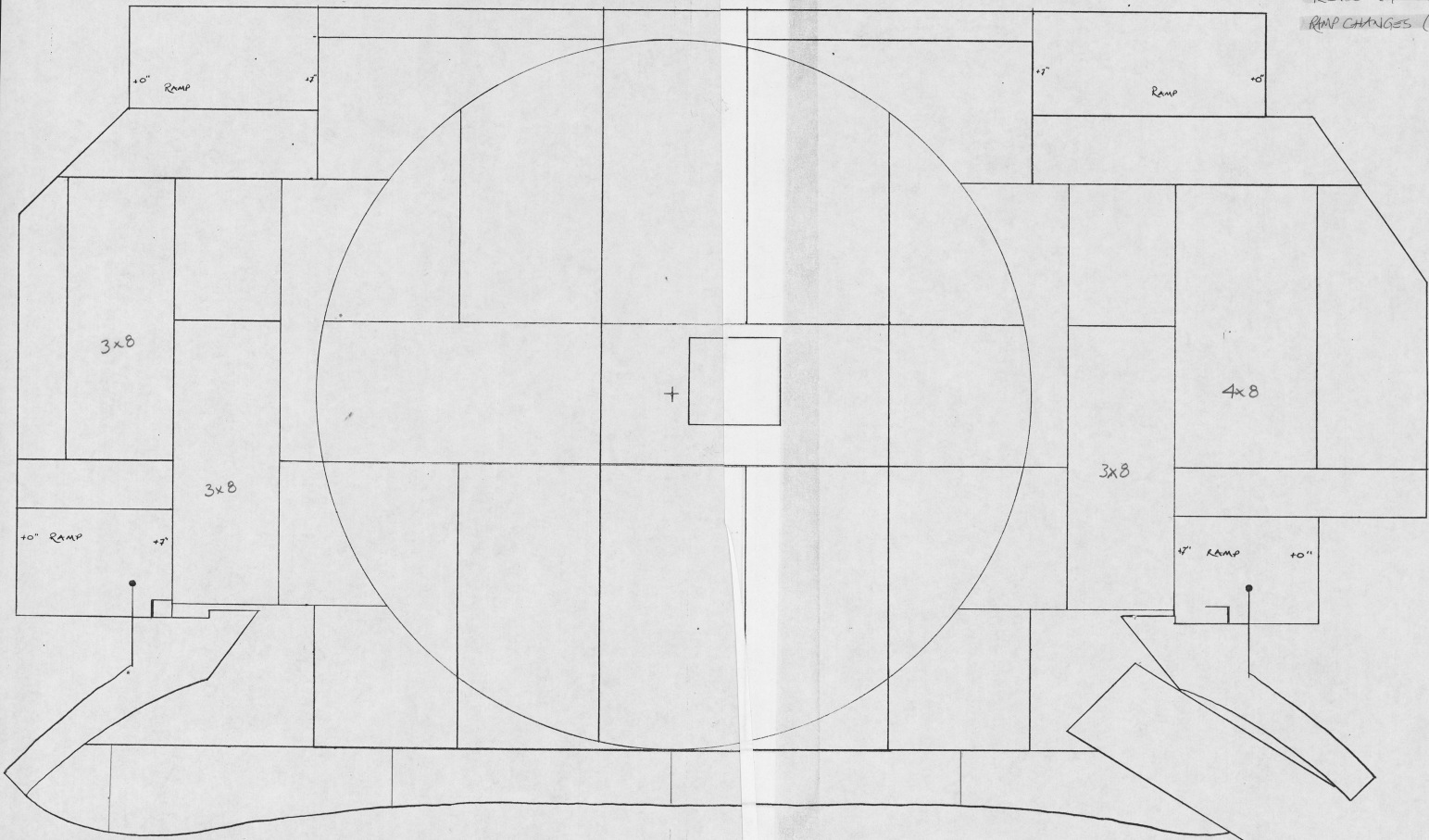
LESS MIS GRATES

$$9 \times 21'' = 2 \times 8'$$

$$10 \times 26'' = 2 \times 11'$$

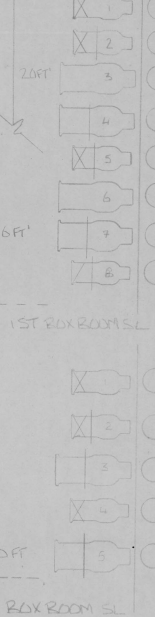
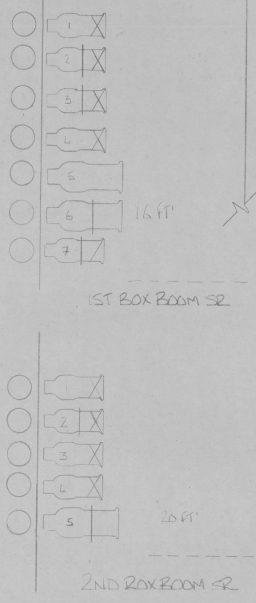
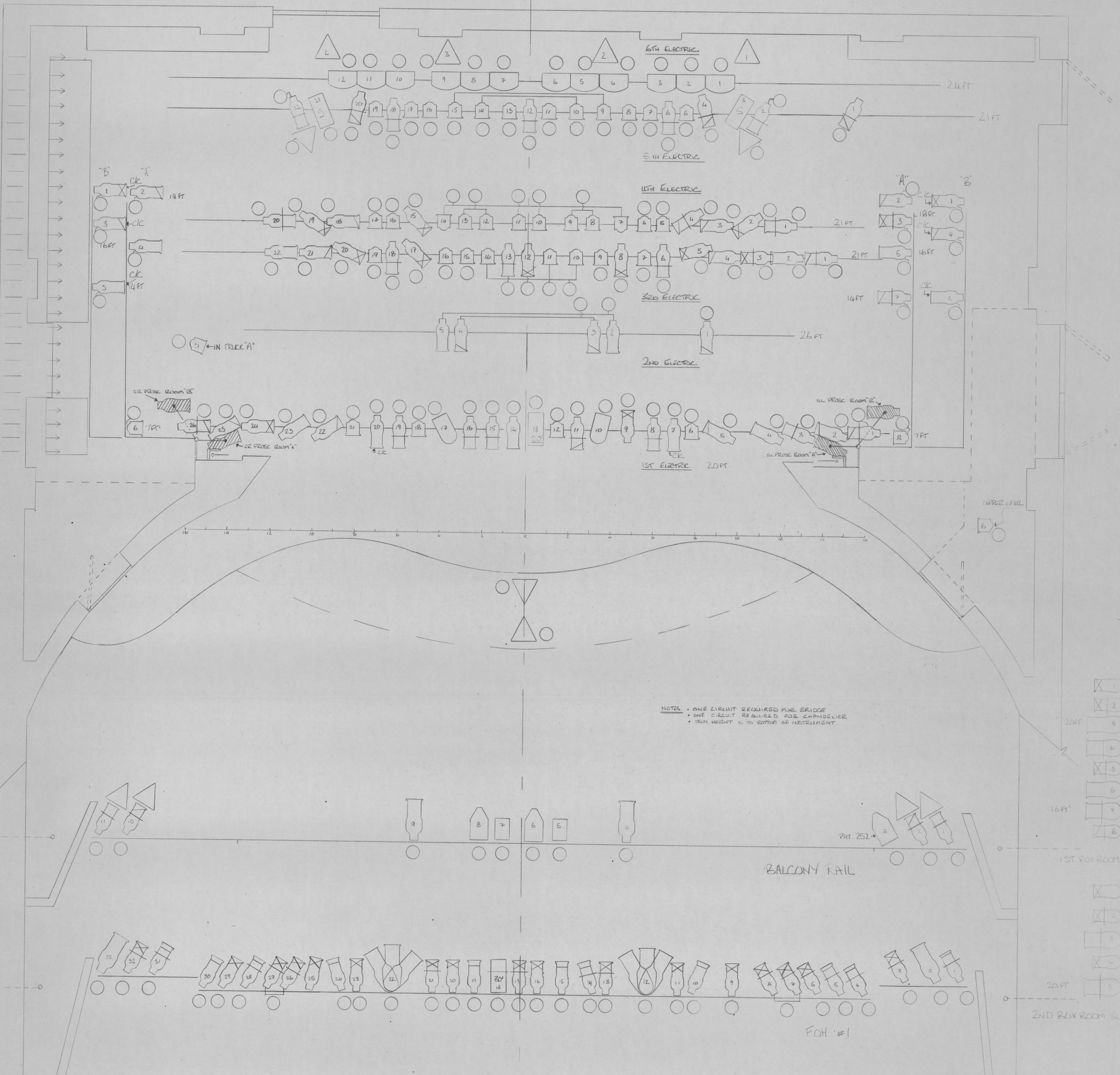
1,37 / LFT

PLEASE NOTE PROSPECTIVE
RAMP CHANGES (ALL FOUR)



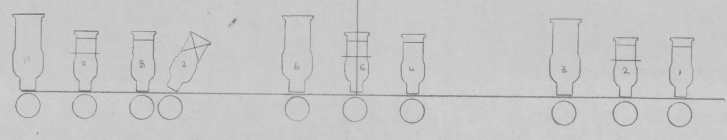
+72"

- 26 SPEAKER
- 25 6TH ELECTRIC
- 24 BACKDROP
- 23 5TH ELECTRIC
- 22
- 21 LAUNDRY LINE
- 20
- 19 CHANDELIER
- 18
- 17 SPEAKERS
- 16 4TH ELECTRIC
- 15 PLUG IN STRIPS
- 14 3RD ELECTRIC
- 13
- 12 COURT BANNER
- 11 FRATED SCRIM
- 10 BRIDGE
- 9 2ND ELECTRIC
- 8
- 7 BRIDGE
- 6
- 5 BLACK SCRIM
- 4 SPEAKERS
- 3 1ST ELECTRIC
- 2 PLUG IN STRIPS
- 1 FIRE CURTAIN

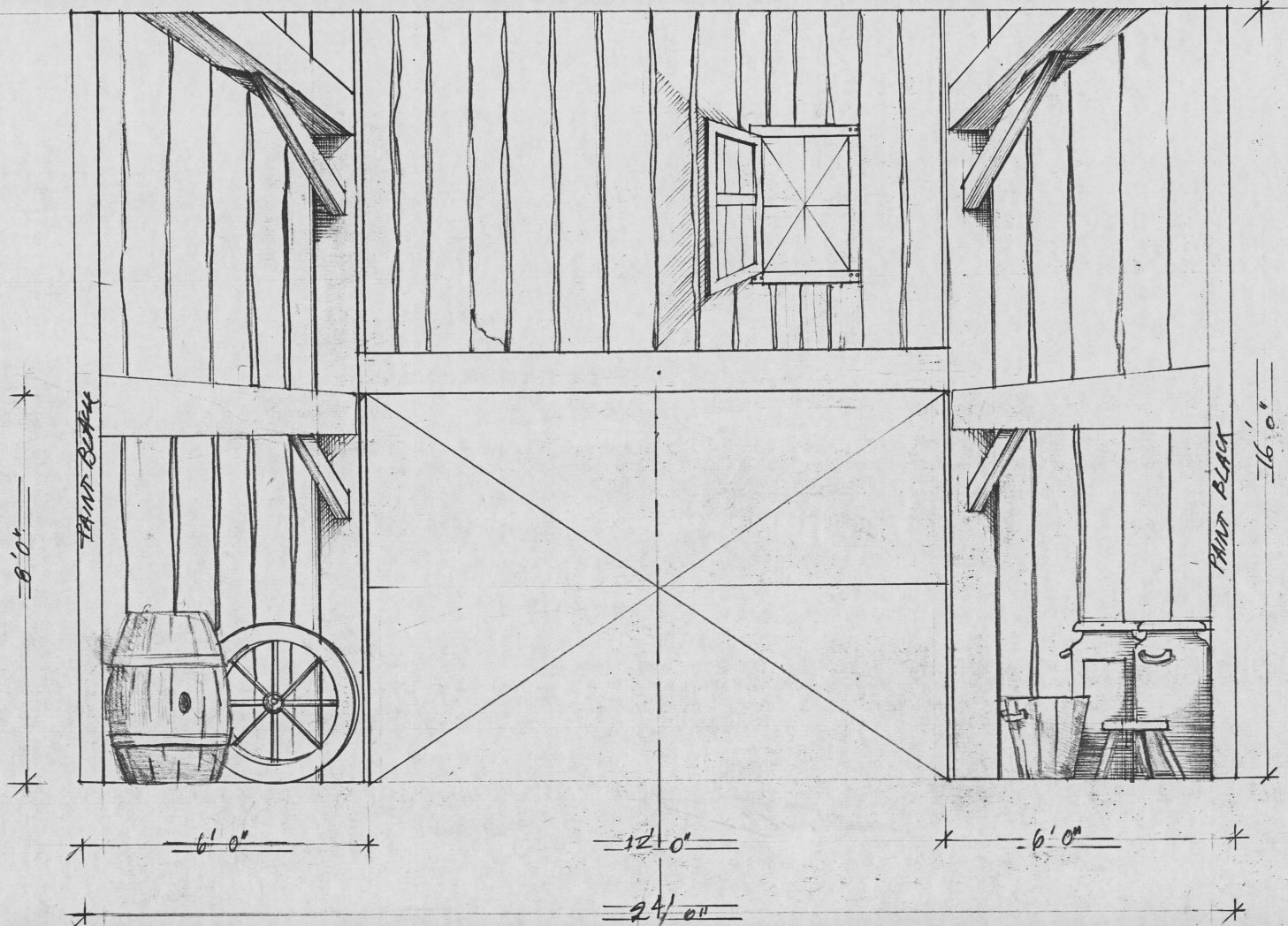


LEGEND	
C/C	C/OLOUR CHANGER
□	GOED
○	CIRCUIT
□	6" PRESNEL
□	6X22 F SPOT
□	6X9
□	6X12
□	6X16
□	16"
□	17MM ZOOM
□	20°
□	30°
□	VERY NARROW
□	PANI PROJECTOR
□	KODAK PROJECTOR
□	STROBE

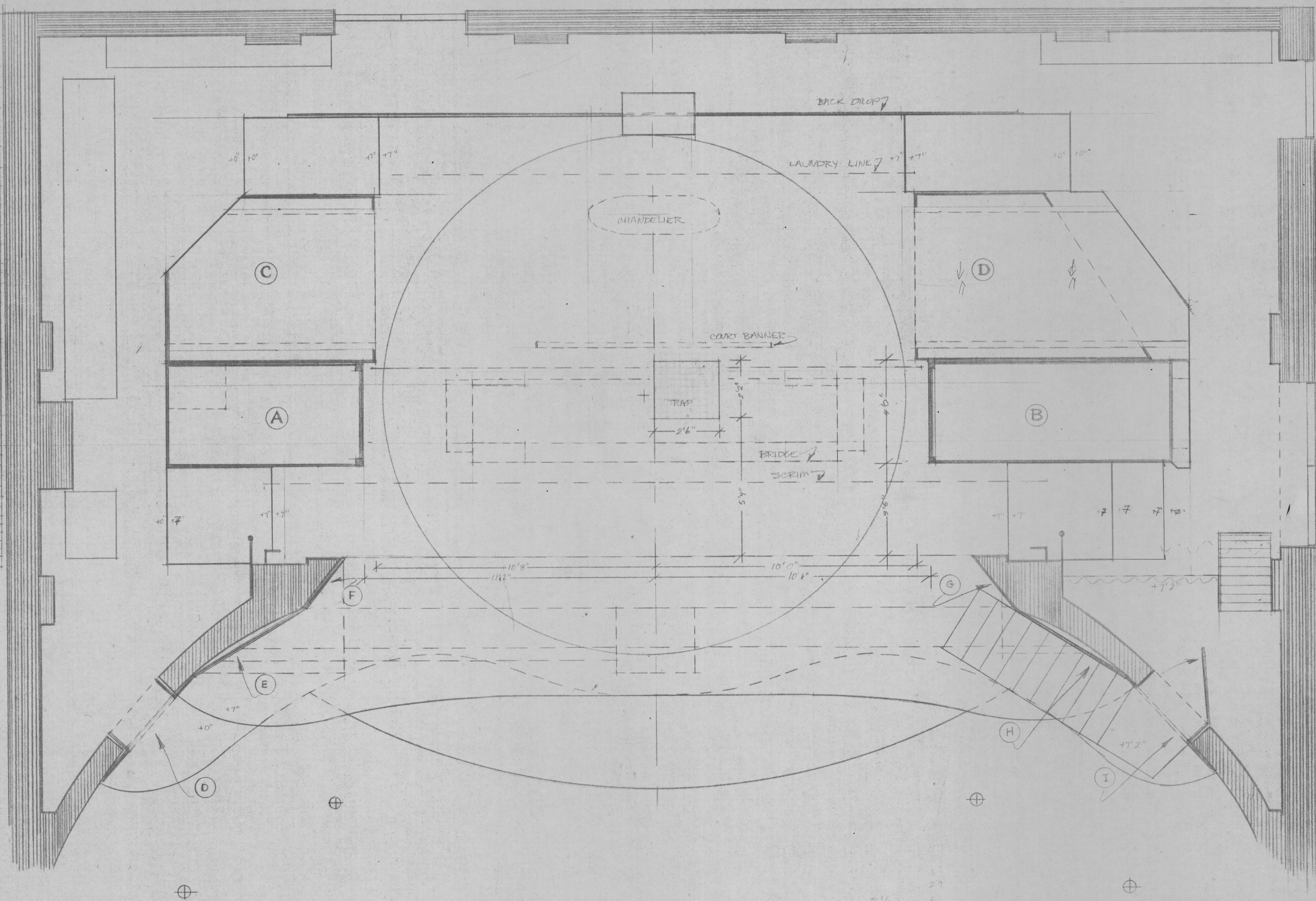
LES MISERABLES
 NEPTUNE THEATRE
 HALIFAX, NS APRIL 1994
 LIGHTING DESIGN:
 HARRY FRENHER
 SCALE 1/2" = 1' DRAWN BY: R. LEIGHTON




FDH #2



- 26
- 25
- 24 BACK DROP
- 23
- 22
- 21 LAUNDRY LINE
- 20
- 19 CHANDELIER
- 18
- 17
- 16
- 15
- 14
- 13
- 12 COURT BANNER
- 11 FRAMED SCRM
- 10 BRIDGE
- 9
- 8
- 7 BRIDGE
- 6
- 5 BLACK SCRM
- 4
- 3
- 2
- 1 FIRE CURTAIN



<h2>Les Misérables</h2>		
NEPTUNE THEATRE FEB/93		
DIRECTED BY: LINDA MOORE DESIGNED BY: BRIAN PERCHALUK		
GROUND PLAN		
SCALE: 1/2" = 1'-0"	P. 1/10	