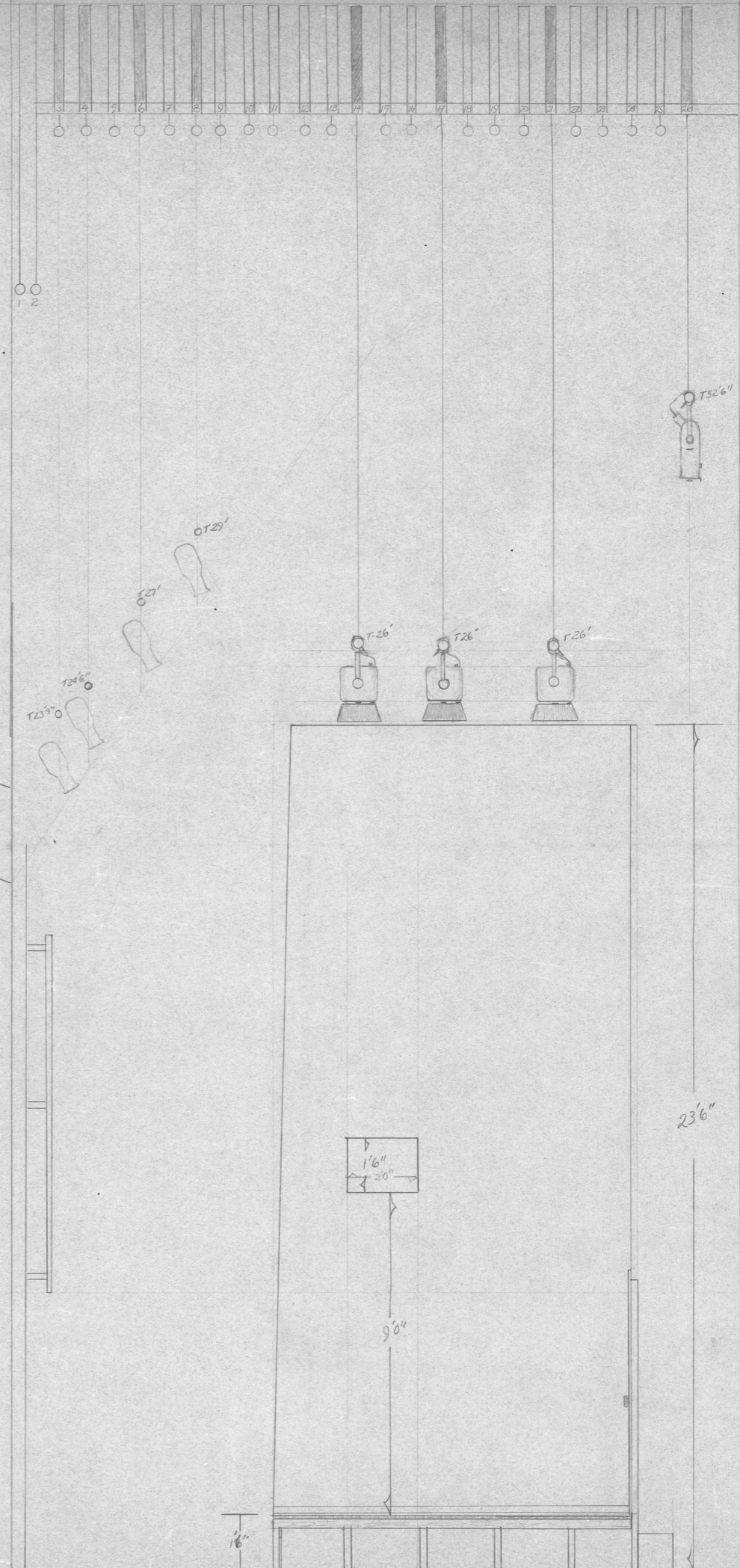
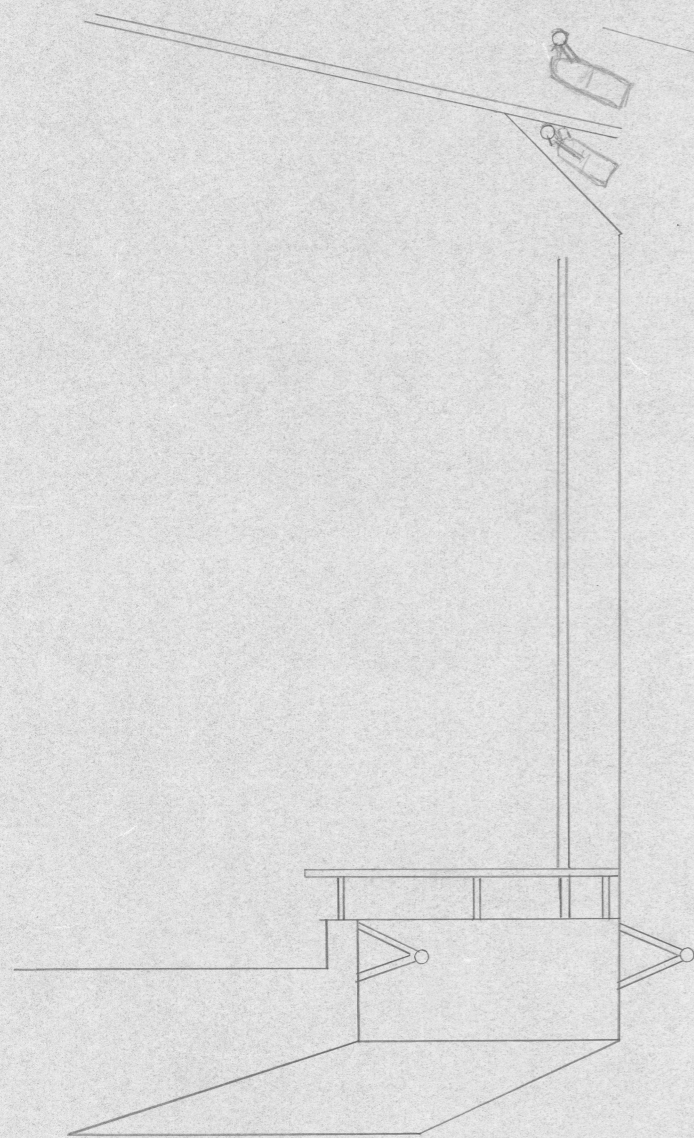


* N.B. - THERE ARE SOME RANDOM LEAVING TIMBERS SR & SL (12-16) CONSTRUCTED OF SCAB LUMBER & OTHER JUNK. DETAILS OF THESE WILL BE FINALIZED ON MY ARRIVAL. TIMBER 20'-31' LONG.

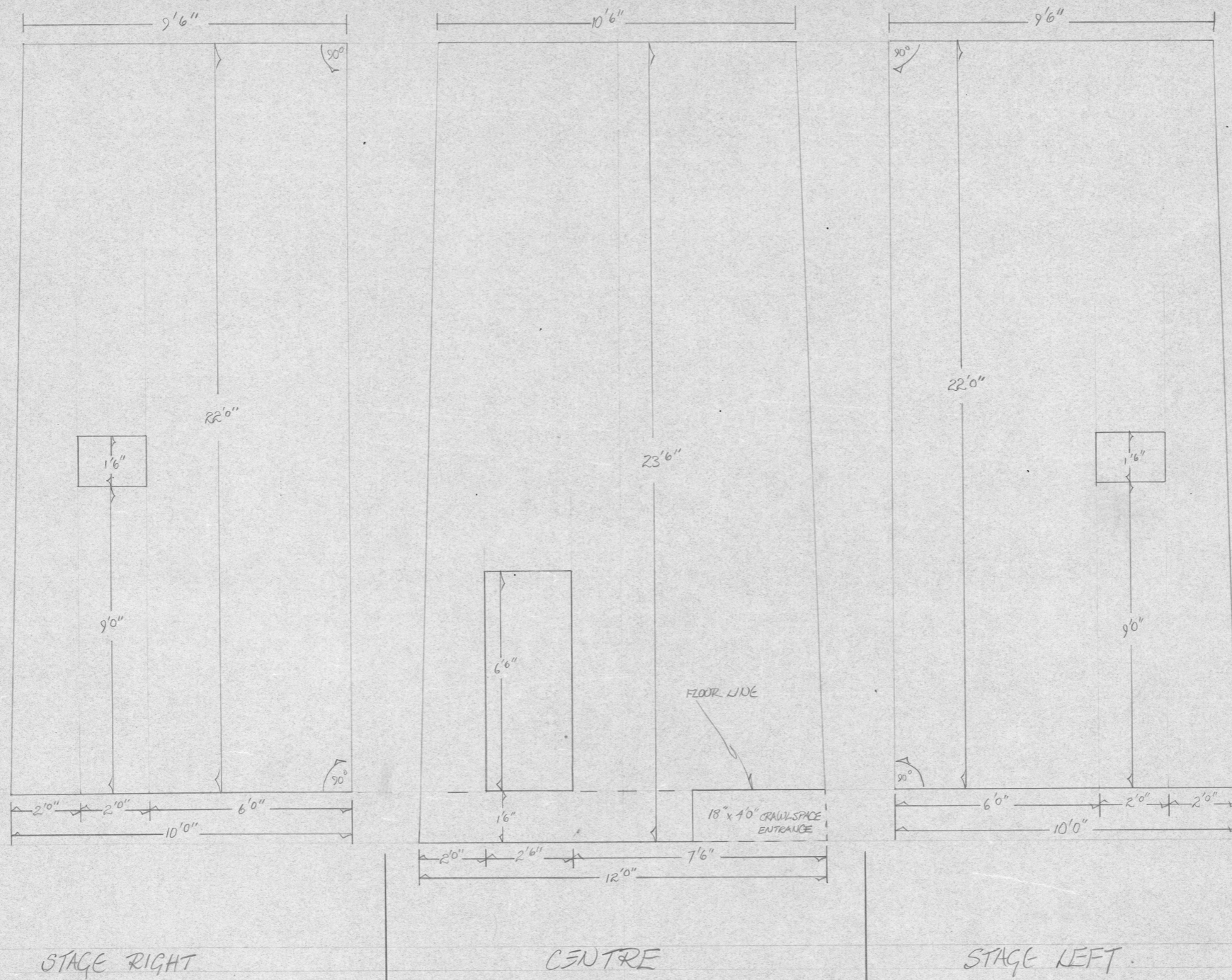
BASIC HOLE SIZE 2'3" X 4'0"

- 26
- 27
- 24
- 23
- 22
- 21
- 20
- 19
- 18
- 17
- 16
- 15
- 14
- 13
- 12
- 11
- 10
- 9
- 8
- 7
- 6
- 5
- 4
- 3
- 2
- 1

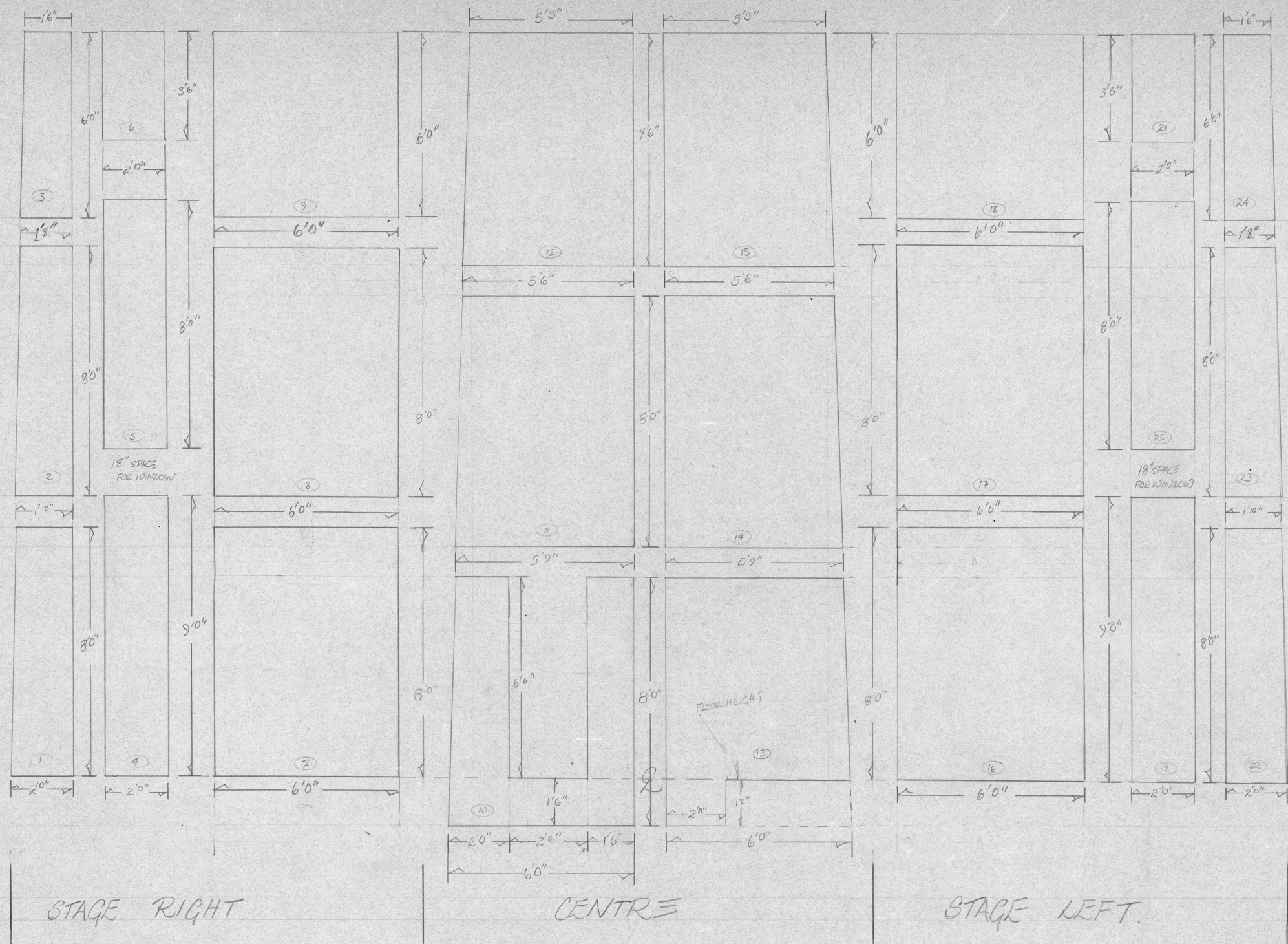
NEPTUNE THEATRE
 ENDGAME ^{by} S. BECKETT
 GROUNDPLAN
 DIR. - PETER FROELICH
 DES. - ROY ROBITSCHER
 1/2" = 1'0" NOV 11/1981
 1# 9/11



NEPTUNE THEATRE
 ENDGAME
 SECTION
 1/2" = 1' 0"
 rajababekes 11/12/11
 DWG#2

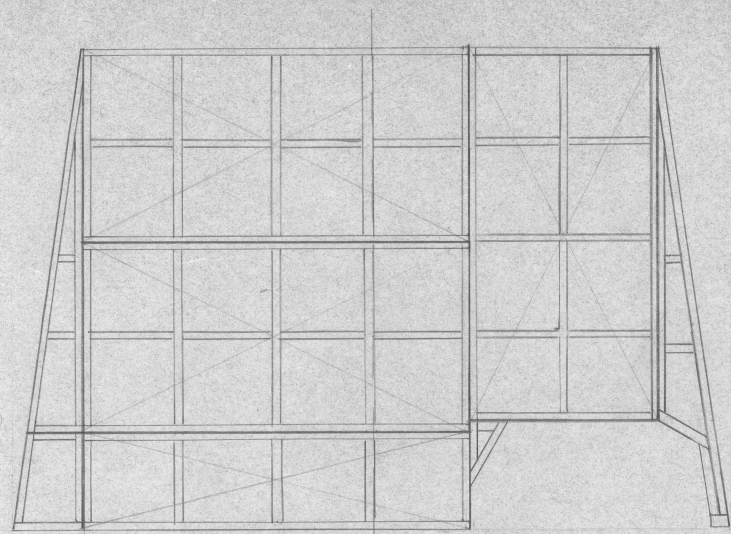


NEPTUNE THEATRE
 ENDGAME
 BASIC WALL ELEVATIONS
 1/2" = 1'0" NOV 15/81
 raj whitehead DWG #3

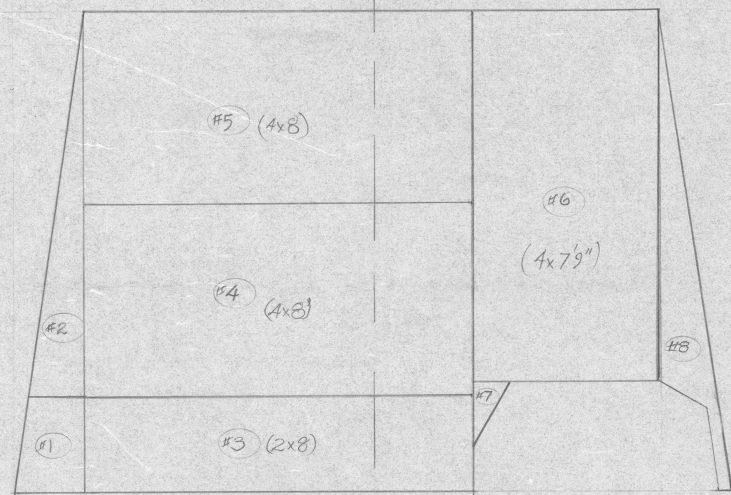


*NB. FLATS CONSTRUCTED OF 2x3 PINE WITH
 HARDCOVER E. CANVASSED. SINCE I'M NOT
 FAMILIAR WITH THE LENGTH OF FLATS YOU ARE
 ABLE TO BUILD, I SUGGEST THESE SHORT
 UNITS. IF LONGER FLATS CAN BE CONVENIENTLY MADE
 SAY 16 FEETERS — SO MUCH THE BETTER. ALSO,
 DEPENDING ON THE BUDGET, SR & SL FLATS ARE DOUBLE SIDED.
 (JUST STRAIGHT CANVAS ON THE BACK)

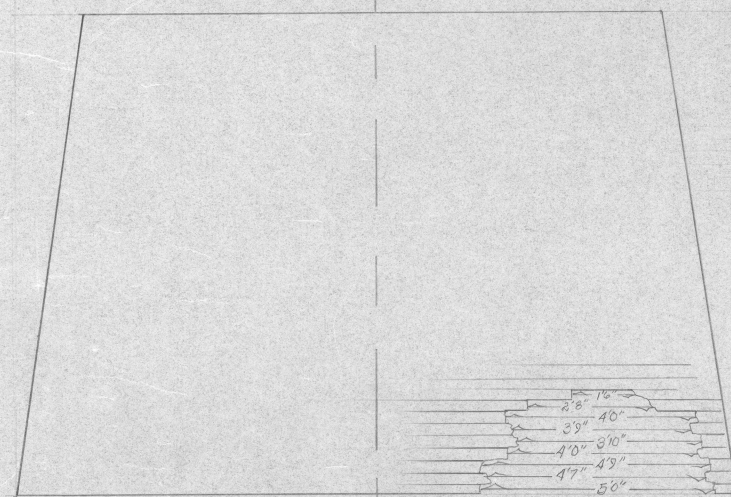
NEPTUNE THEATRE
 ENDGAME
 FLAT BREAKDOWN
 1/2" = 1'0" NOV 15/81
 [Signature] DRG #4



OVERALL FRAMING PATTERN
2' SQUARE UNITS

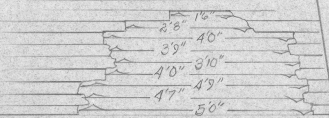


BASIC FRAMING UNITS



DECK WITH 1x3 OR 1x4 #1 OR #2 BULK
BETTER STILL IF IT'S RANDOM WIDTH USED STOCK

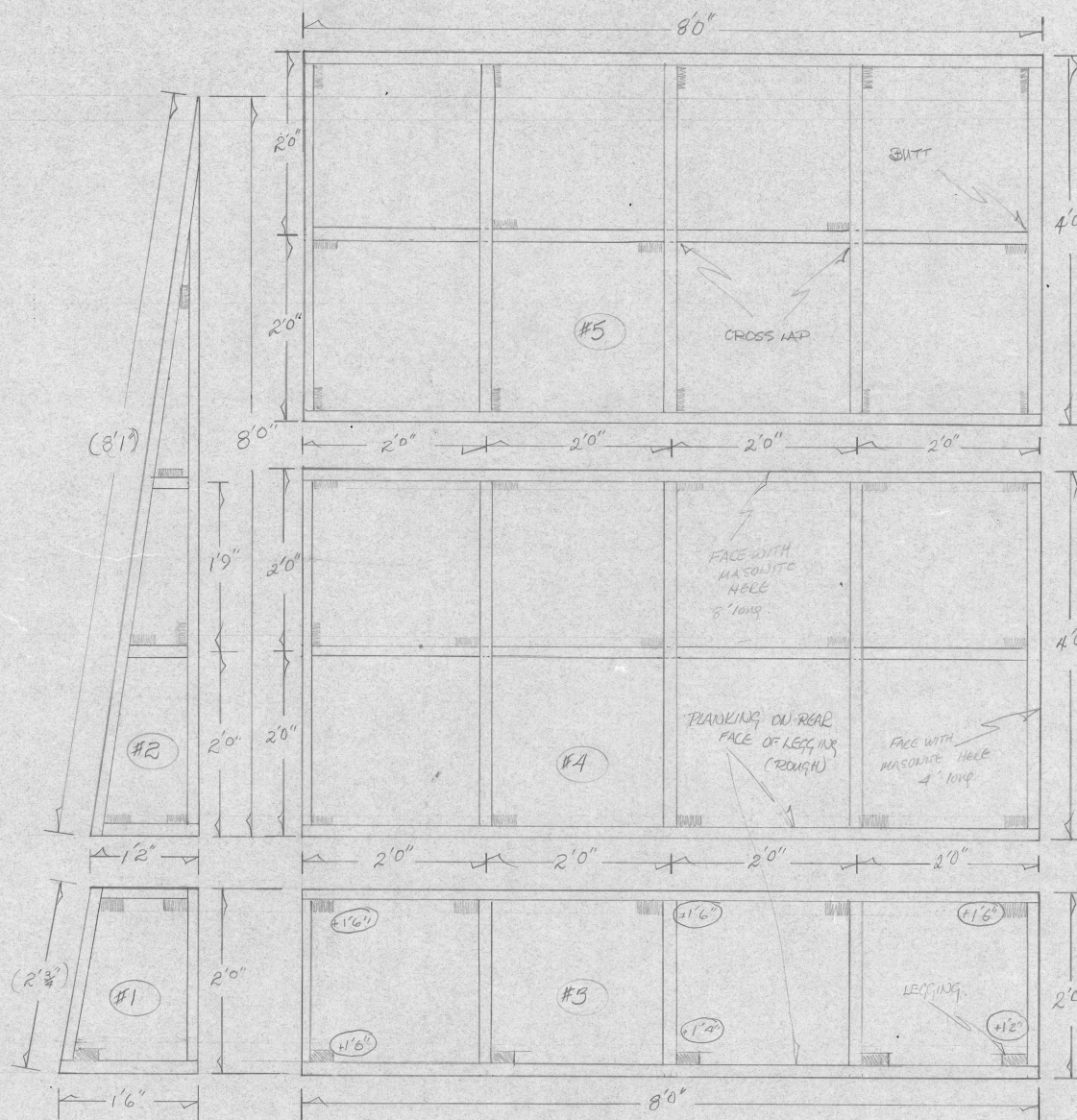
DECKING SHOULD BE
CUT TO 2', 2', 6', 8' OR 10'
LENGTHS WITH THE END
BITS SPACED IN THIS IS TO
ENSURE JOINTS COINCIDING
WITH JOISTS



$\frac{1}{2}'' = 1'0''$

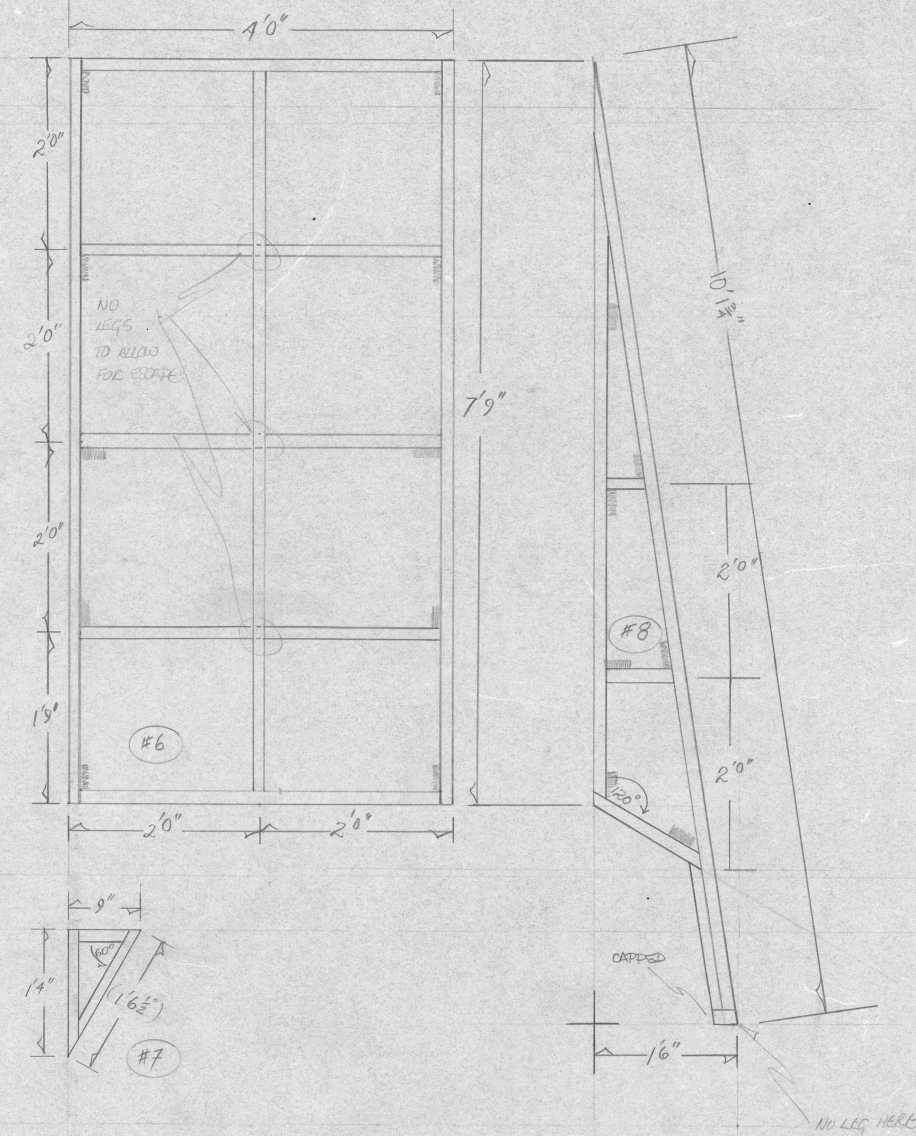
$1'' = 1'0''$

* GARBAGE CANS SIT IN HOLE DSL & HAVE ACCESS PORTS UPS. THEY ARE CHAINED IN PLACE & ARE SITTING ON A PILE OF CONSTRUCTED RUBBLE
I HAVEN'T DRAWN THIS, BECAUSE WE'LL HAVE TO MESS AROUND WITH IT ON SITE. IN ANYCASE THEY SHOULD BE ABLE TO ROCK IN PLACE



FRAMING OF 2x4 #1 COAST PINE

- FULL FACINGS SL & SR - HARDWARE / BURLY / SHEETROCK - WHATEVER
- PLANK FACINGS - SCRAP LUMBER (2 BOARDS ON 1ST FACE ONLY)
- * ALL PLATFORMS ARE 1'6" HIGH EXCEPT PLATFORM #3 WHICH SHOULD SAG TO 1'2" ON DSL CORNER.



NEPTUNE THEATRE

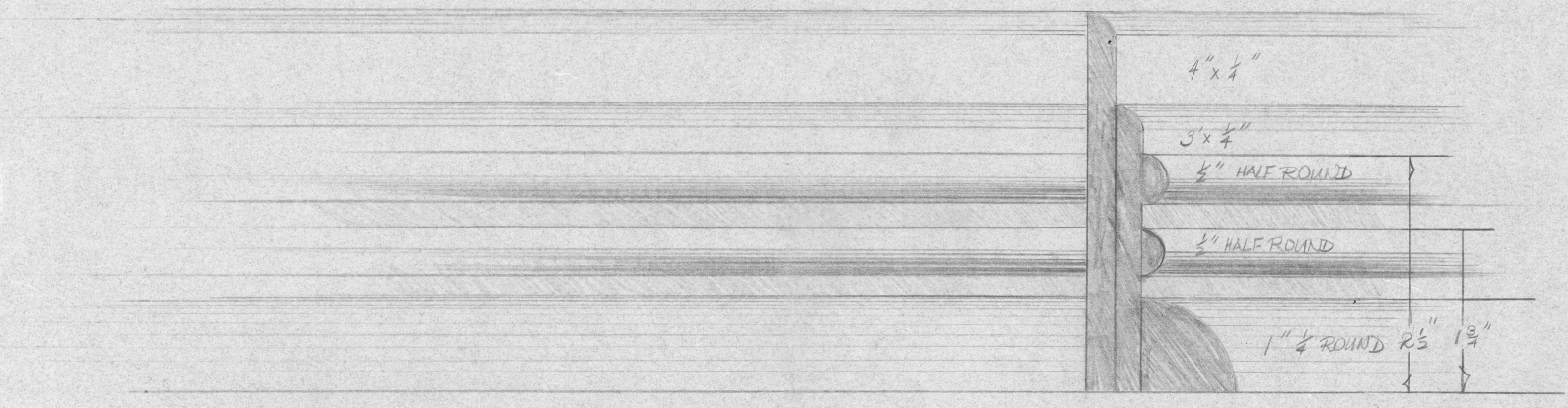
ENDGAGE

DECK FRAMING / DECKING

$\frac{1}{2}'' = 1'0''$ & $1'' = 1'0''$

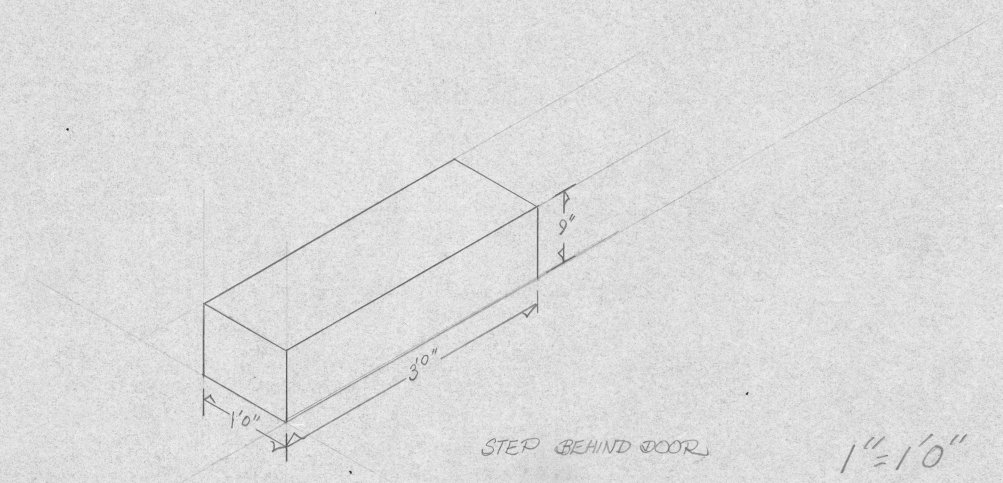
roy john ketching NOV 16/81

DWG#5



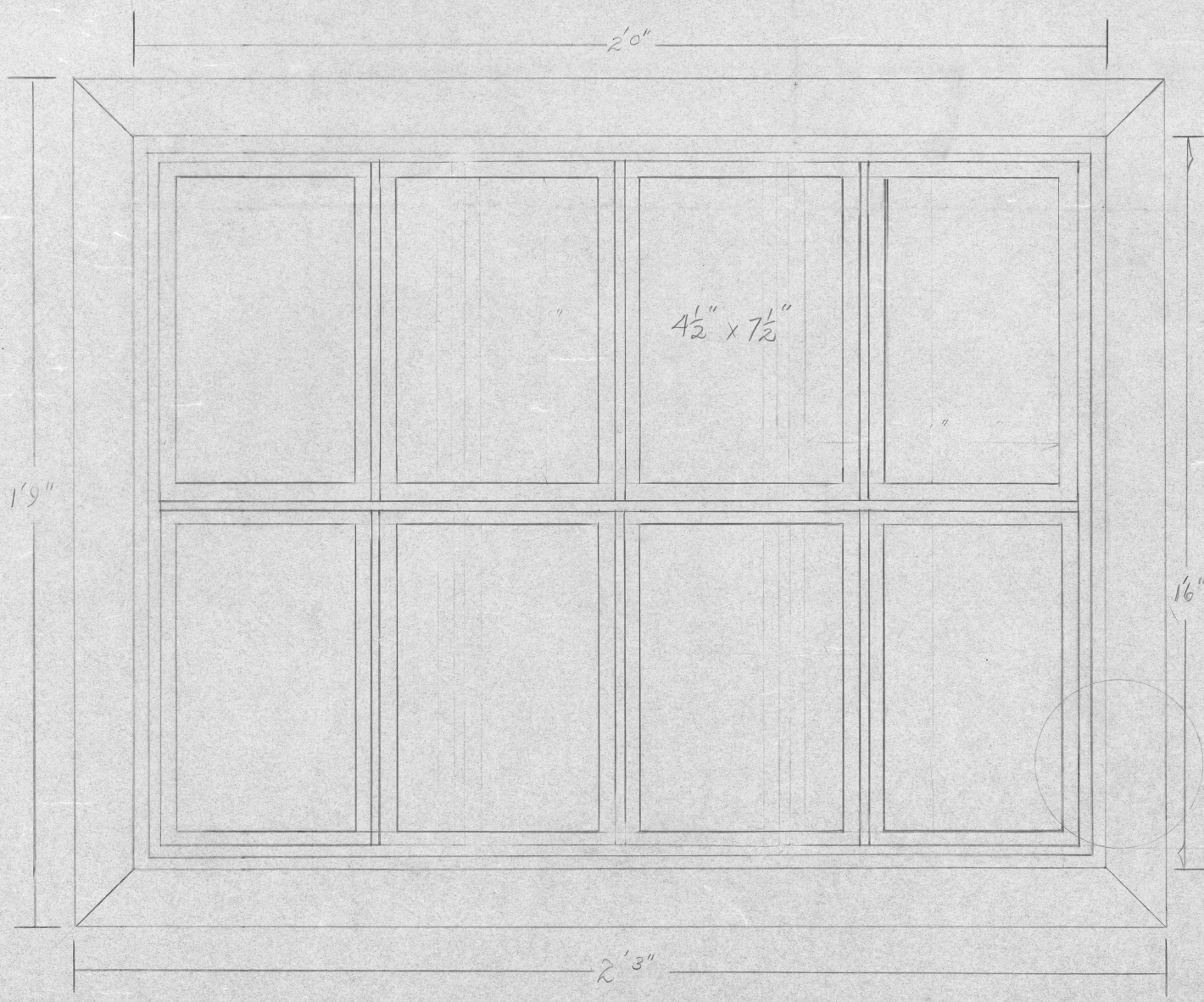
BASEBOARD & DOOR MOLDING (FOR DOOR, OMIT 1 1/2" ROUND)

FULL SIZE



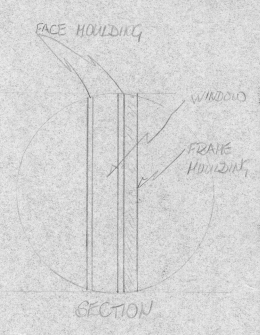
STEP BEHIND DOOR

1"=1'0"



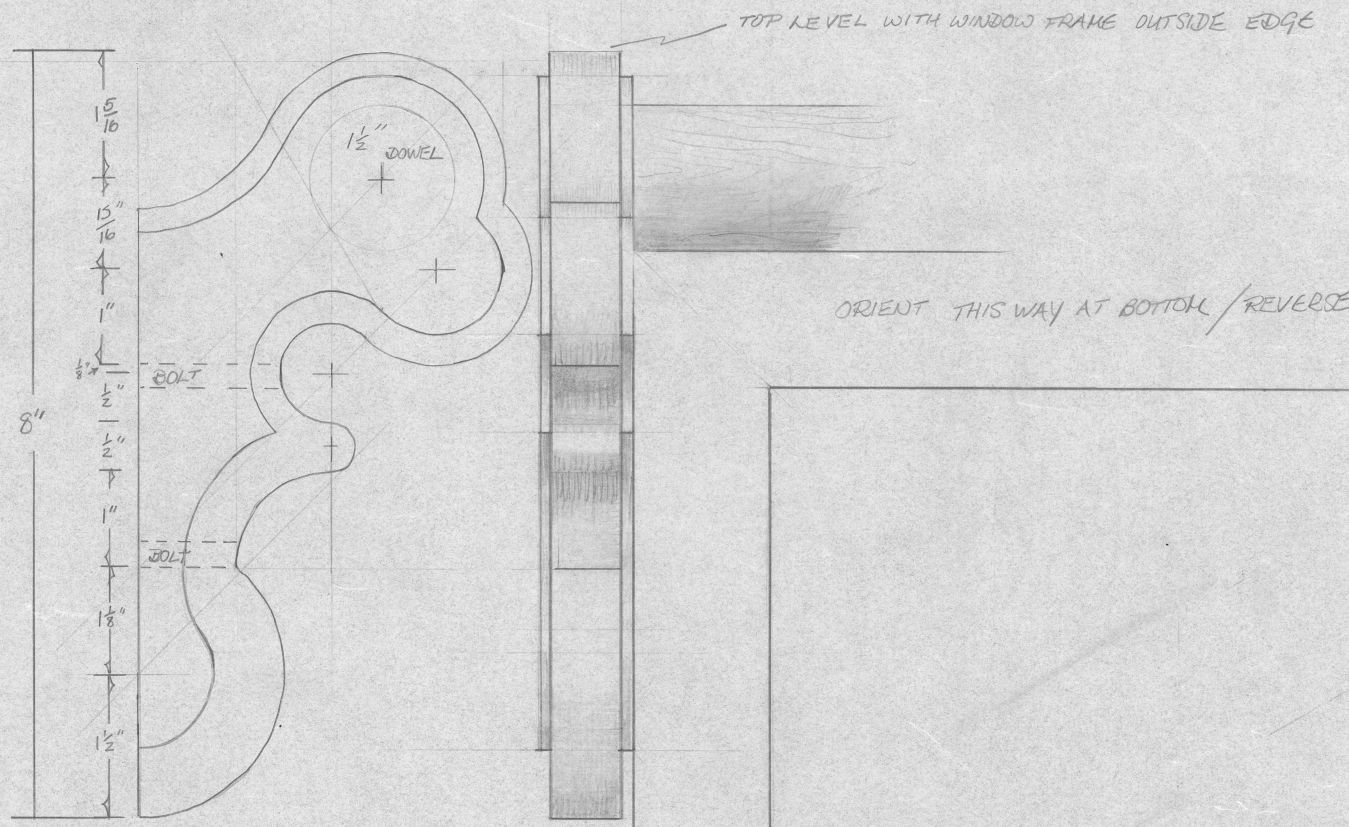
WINDOWS (2) ARE IDENTICAL ON BOTH SIDES. MAKE OF 1/2" PLY CUTOUT FOR BASIC SHAPE AND 1/4" x 1/8" PCB FOR RELIEF. MOLDINGS MITRED AND ARE 1 1/2" x 1/4" PLY OR HOUSING.

HINGE (2) ON U.S. SIDES SO THAT WINDOWS OPEN IN



ONE HALF SIZE

WINDOWS



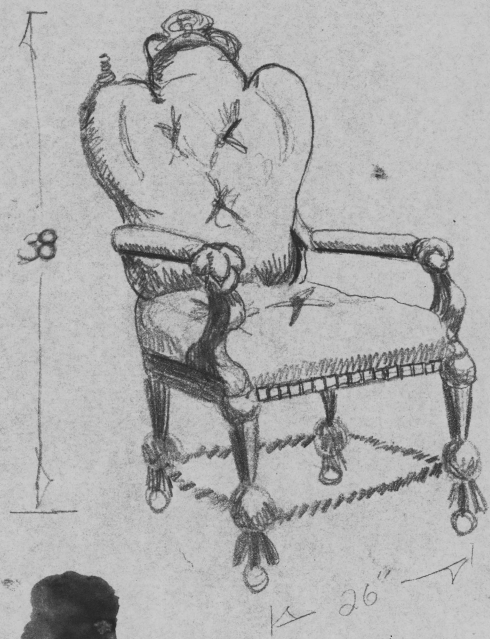
LADDER (CURTAIN) BRACKETS
 MAKE 8 CENTRE CORE - 3/8" MAHOAGANY
 RELIEF 1/8" MAHOAGANY PLY
 VARNISH

FULL SIZE

NEPTUNE THEATRE
 ENDGAME
 VARIOUS DETAILS
 SCALES AS MARKED

104 [signature]
 NOV 15/81

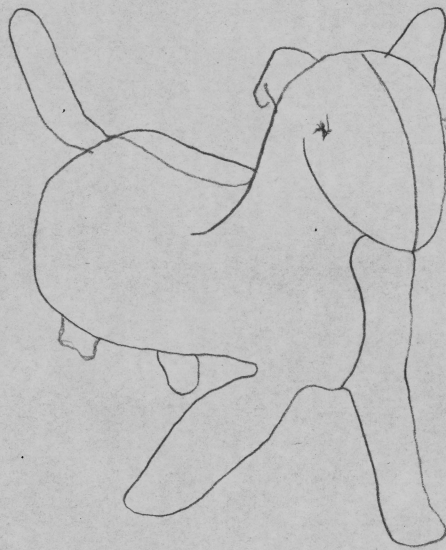
DWG #6



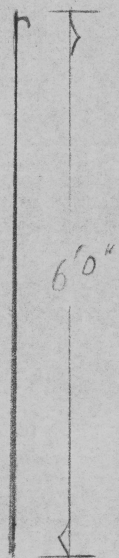
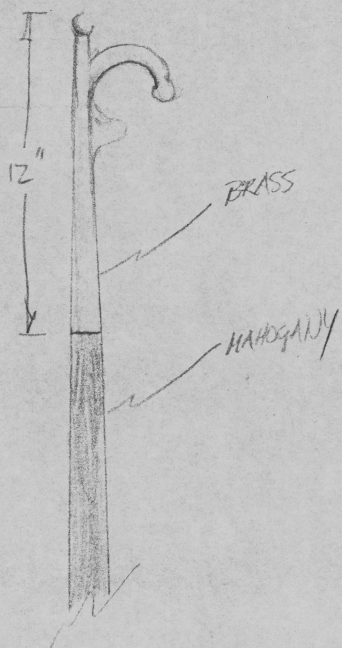
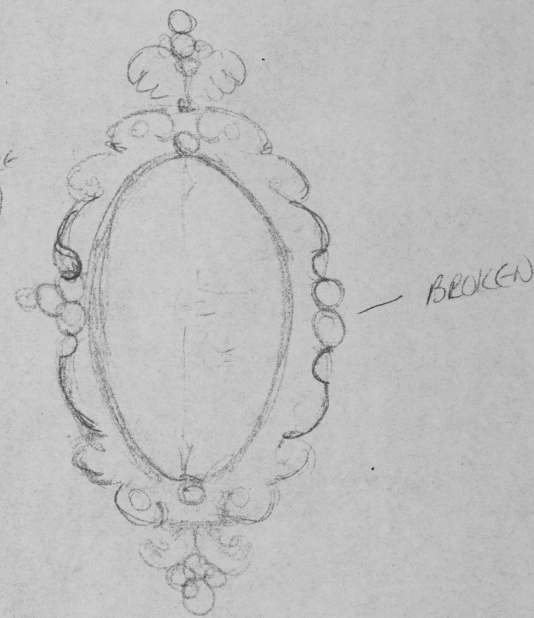
CHAIR

SEAT 26" □
 SEAT HGT (INCL. CASTERS)
 - 24"
 BACK - 38"
 4 mismatched
 2" casters

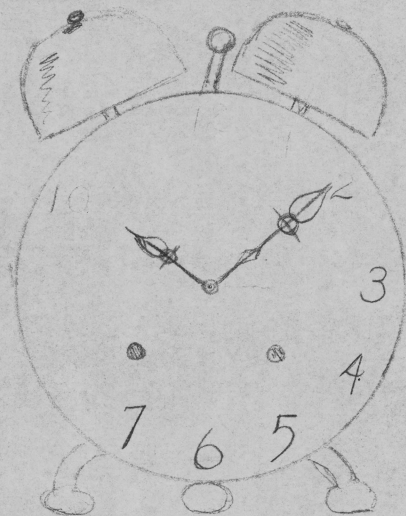
DOG
 10 1/2 - 12" long
 4" THICK
 4" LEGS (3 only)
 2 1/2 - 3" TALL
 1 1/4" EARS
 BK FELT
 "SQUEAK INSIDE"



TACKY
 BRASS
 ROCCOCO
 PICTURE FRAME
 (PORTUGUESE CHG)
 6 x 3 1/2
 INSIDE
 MEASURE



GAFF



4" Diameter BRASS CLOCK
 OLD FRONT WINDING HOLES
 #'S FABRICS

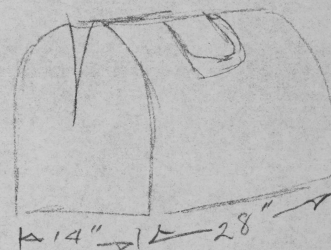
LADDER - 9' LONG, 14" WIDE RXT RAILS, 1 1/2" HUNG DOWEL RUNGS

Finger nail sheath - see HANK - WAIT

LG SNOW SHOES - 1 pair

1 Black Umbrella - (tattered?)

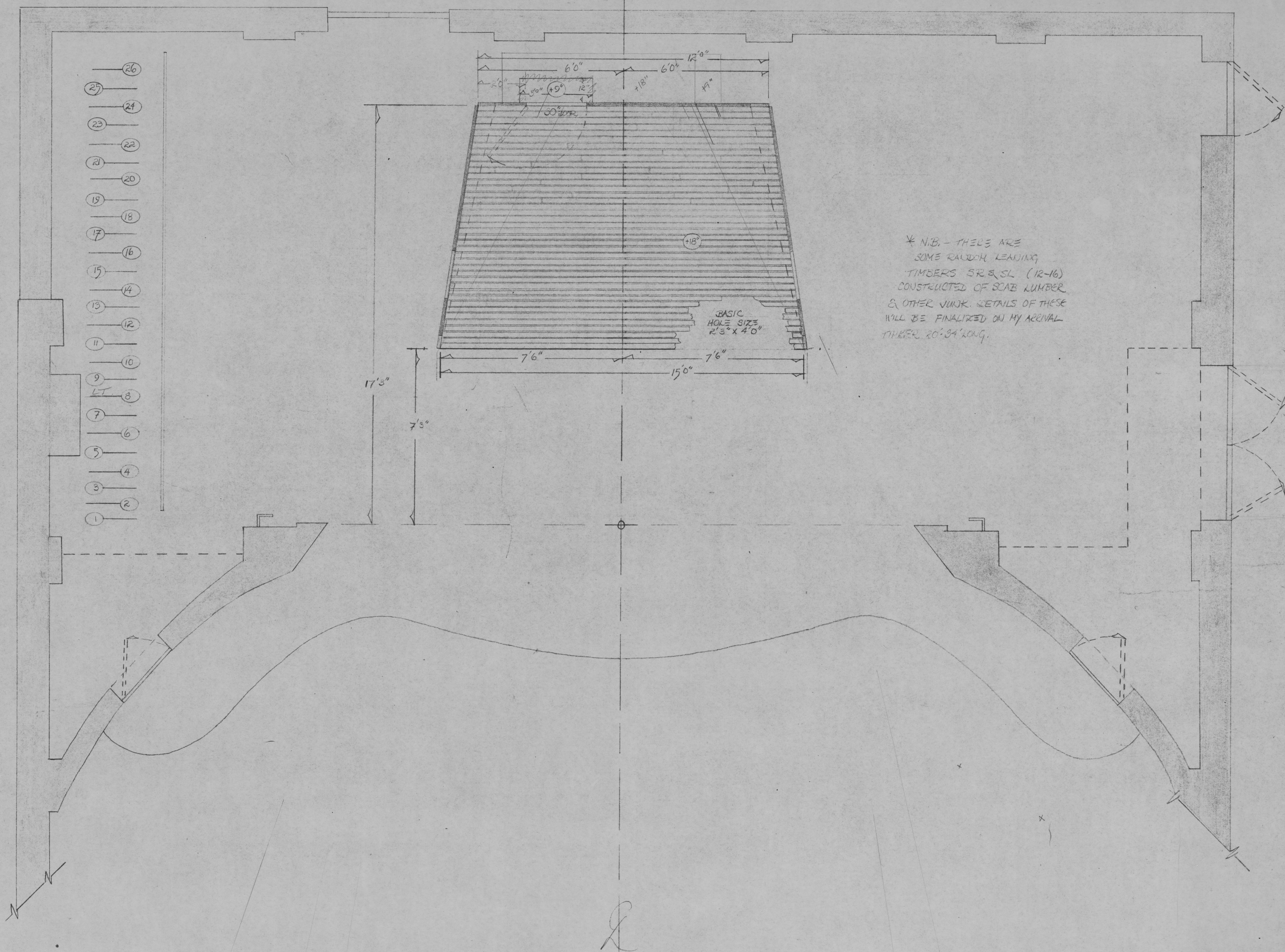
BROWN
 LEATHER
 SATCHEL



WHISTLE BRASS NOISE THUNDERER - NO BALL ON 4'
 RED SHOE LACE

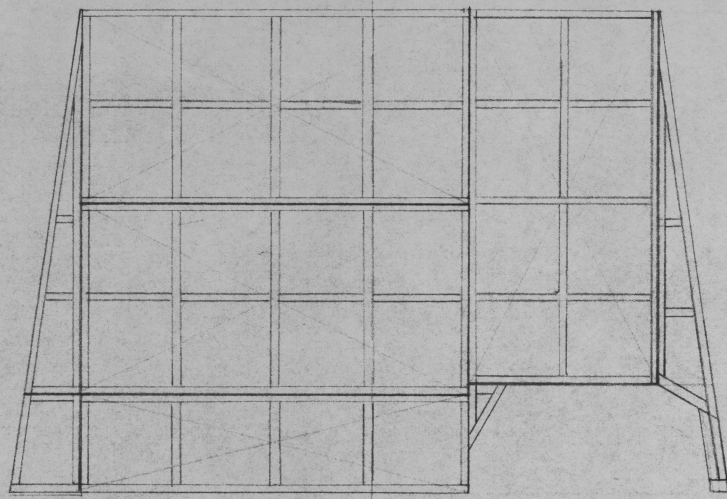
2 METAL GARBAGE CANS - SEE NOTE DWG #5

ENDGAME - TROPS
 100 white ches

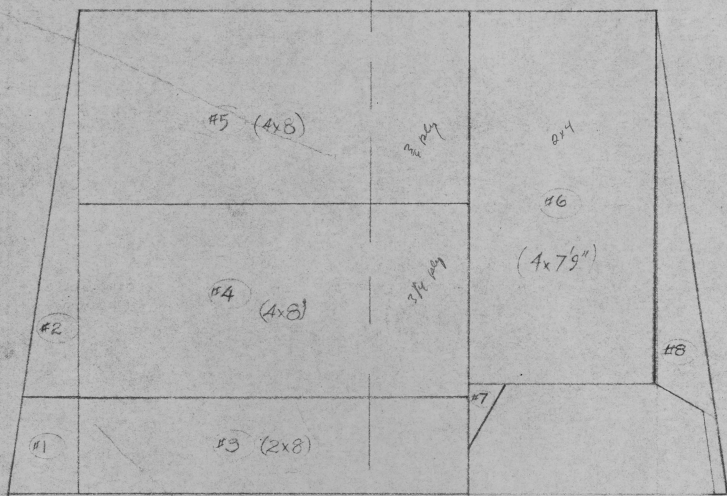


* N.B. - THESE ARE SOME RAUGH LEANING TIMBERS SR & SL (12-16) CONSTRUCTED OF SCAB LUMBER & OTHER JUNK. DETAILS OF THESE WILL BE FINALIZED ON MY ARRIVAL TIMBER 20'34' LONG.

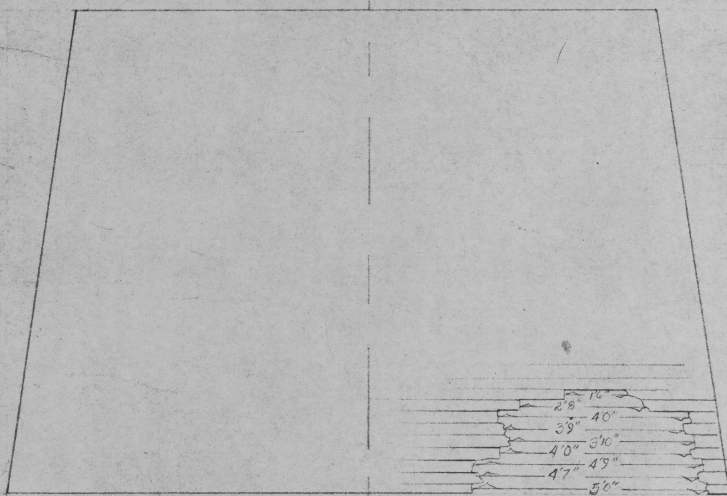
NEPTUNE THEATRE
 ENDGAME ^{by} S. BECKETT
 GROUNDPLAN
 DIR. - PETER FROENHICH
 DES. - ROY BOBITSCHEK
 1/2" = 1'0" NOV 11/1981
 Roy Bobitschek #1



OVERALL FRAMING PATTERN
2' SQUARE UNITS



BASIC FRAMING UNITS



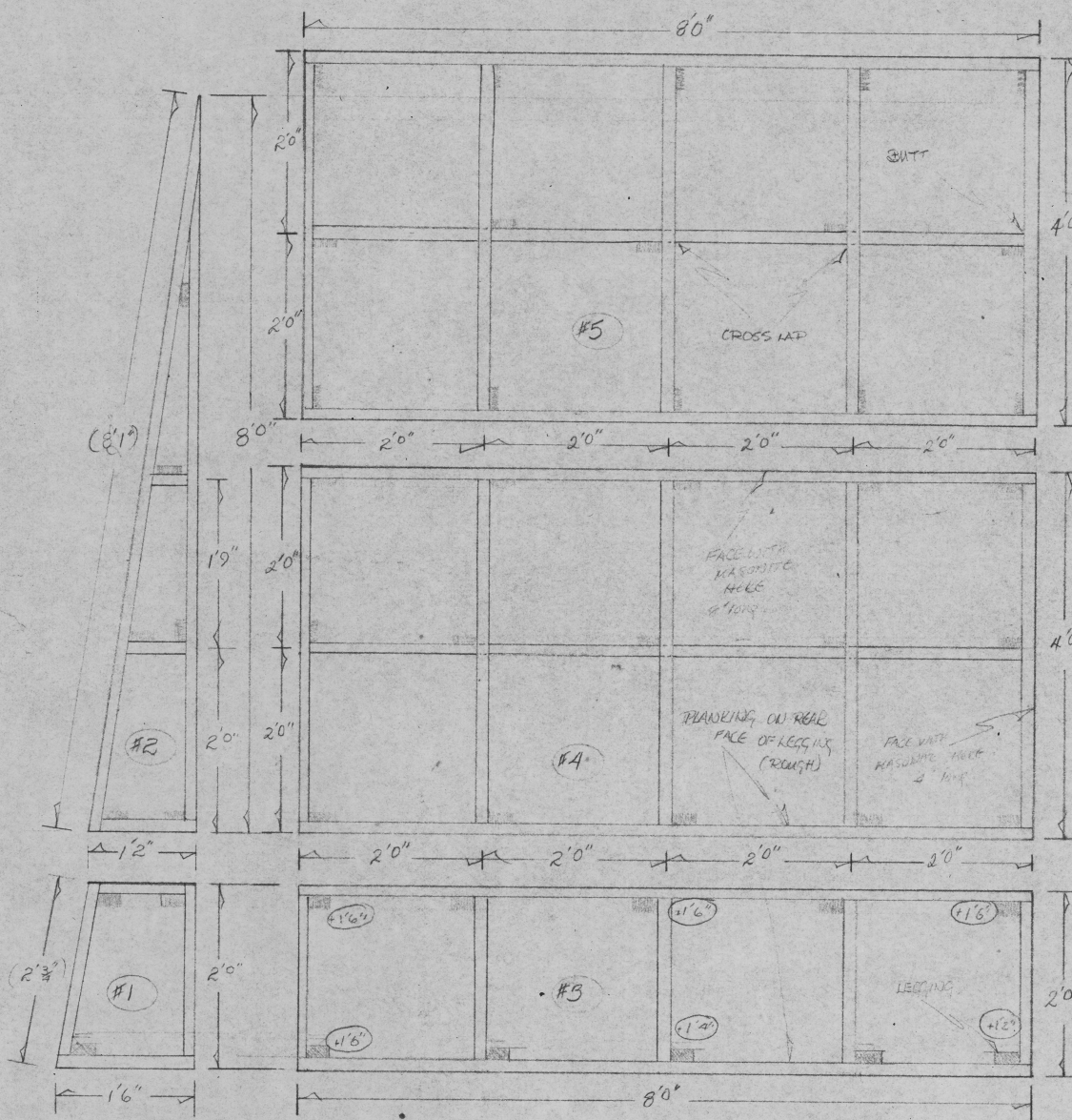
DECK WITH 1x3 OR 1x4 #1 OR #2 JOIST
BETTER STILL IF IT'S RANDOM WIDTH USED STOCK

CHECKING SHOULD BE
CUT TO 2' 4" O.C. OR 10'
LENGTHS WITH THE FAIR
BIT SCARED IN THIS IS TO
ENSURE JOINTS COINCIDING
WITH JOISTS

$$\frac{1}{2} = 1'0''$$

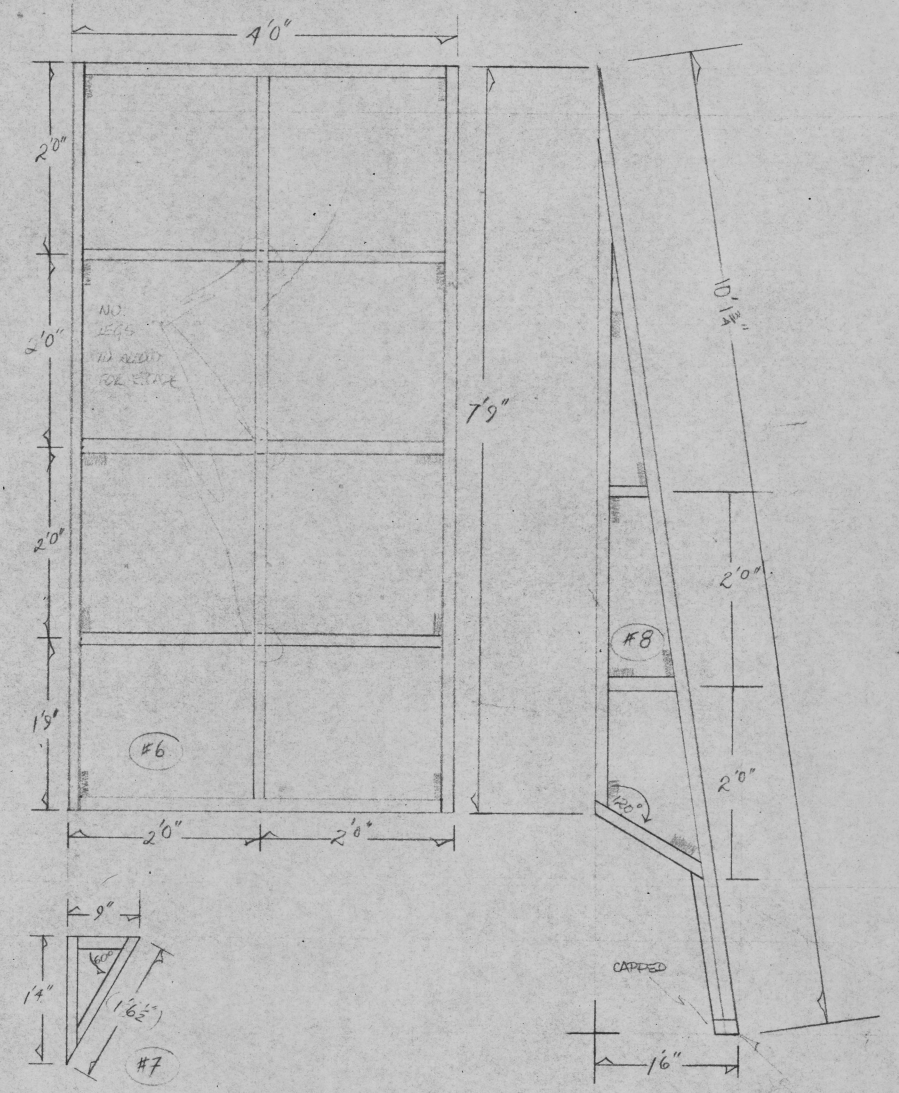
$$1'' = 1'0''$$

* GARBAGE CANS SIT IN HOLE ISL & HAVE ACCESS PORTS UP. THEY ARE CHAINED IN PLACE & ARE SITTING ON A PAIR OF CONSTRUCTED RISERS
I HAVEN'T DRAWN THIS, BECAUSE WE'LL HAVE TO MESS AROUND WITH IT ON SITE. IN ANYCASE THEY SHOULD BE ABLE TO ROCK IN PLACE



FRAMING OF 2x4 #1 CONST. FINE

- FULL FRAMING IS 2x4 - HASHTAG/BURMA/SHROUD - WHATEVER
- PLANK FRAMING - SCUD NIBBER. (2 BROWS ON 1ST FACE ONLY)
- * ALL PLATFORMS ARE 1'6" HIGH EXCEPT PLATFORM #3 WHICH SHOULD SAG TO 1'2" ON ISL CORNER.



NEPTUNE THEATRE
ENDGAME
DECK FRAMING/DECKING
1/2" = 1'0" & 1" = 1'0"
my robot chug NOV 16/02
DWG#5