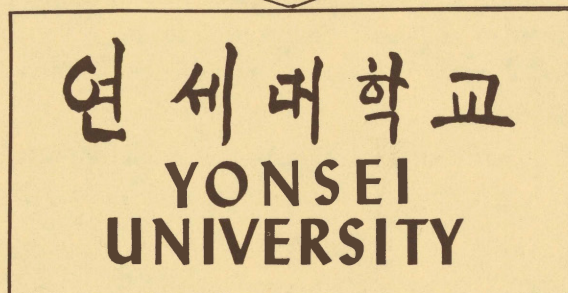
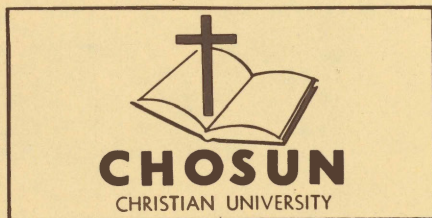


# KOREA

Issue No. 4

March 1, 1957



The union for which so many have worked and prayed for so long is now an accomplished fact. The necessary steps since April 14, 1955 when the two Boards of Managers met for the first time as the joint board of a single institution have been time-consuming but have moved steadily toward the desired goal, until on October 22, 1956 at another joint meeting the Constitution was adopted and a new name chosen.

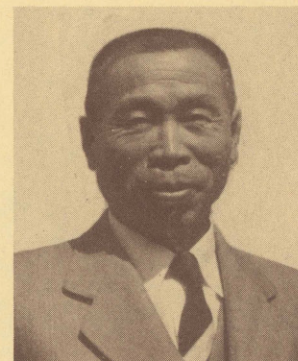
## Yonsei University Was Born

Announcement of this important event was withheld, however, pending formal approval by the Ministry of Education and registration of the property in the Korean courts under the new name, formalities which have now been completed.

*The first President of the new University is Dr. L. George Paik, formerly President of Chosun Christian University.*



*President M. S. Kim of Severance Union Medical College becomes the first Dean of the Yonsei University Medical School for which the newly-adopted Constitution provides the customary measure of professional autonomy within the general administrative framework of the university.*



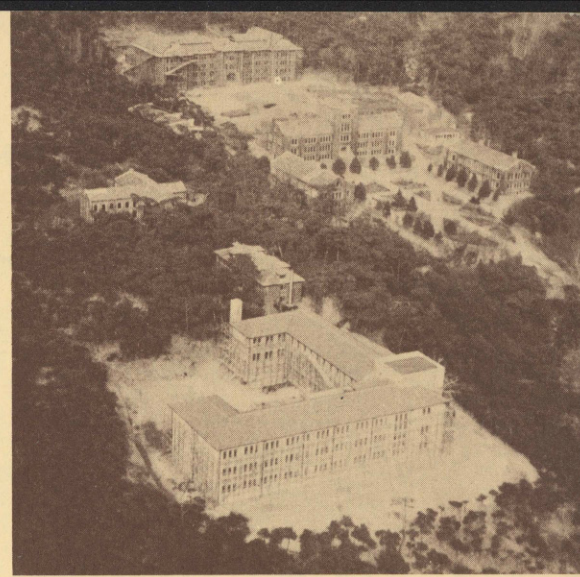




*The new university begins its existence with two vigorous building programs under way on the Yunhi campus outside Seoul,*

*the rehabilitation program initiated by CCU; →*

*← the new medical school and hospital complex being developed by Severance.*



In both of these, generous assistance has come from such non-church sources as the U.S. Army, American-Korean Foundation, and UNKRA. The most recent such help comes from the China Medical Board of New York, Inc. which has granted the sum of \$450,000 toward a building for the teaching of the basic medical sciences in the medical school. This substantial grant was prompted by the desire of the China Medical Board, which will be remembered as the organization formerly supporting the Peiping Union Medical College, to help restore the position of leadership in medical education in Korea which Severance had achieved in the pre-war years.

The mission boards and their constituencies in the American churches have reason to be both grateful and gratified at the interest which has prompted so generous a response from organizations outside the churches — but this does not mean that the job is done — *far from it!*

All who for so long have prayed and labored and given that CCU and Severance might provide Christian higher education for the young men and women of Korea, must gird themselves anew for the even greater efforts which present opportunities call for — rehabilitation carried through to completion, teaching facilities and personnel strengthened, and effective current operation insured.

# YONSEI 연세

How was this name arrived at? What does it mean?

It is a combination of the first characters in the Korean names of

Chosun Christian University — Severance Union Medical College

연히대학교 세부란스비과대학

YON (lengthen or extend) SEI (world or generation)

Some suggested interpretations

Horizons Unlimited

Widening Horizons

The Future's Broadening Way

Cooperating Board for Christian Education in Chosen, Inc.

Room 903, 150 Fifth Avenue

New York 11, N. Y.

John Coventry Smith, Chairman William P. Fenn, Executive Secretary

Participating Agencies: Methodist Division of World Missions and Women's Division of Christian Service; Presbyterian (U.S.) Board of World Missions; Presbyterian (U.S.A.) Board of Foreign Missions; United Church of Canada, Board of Overseas Missions and Women's Missionary Society.