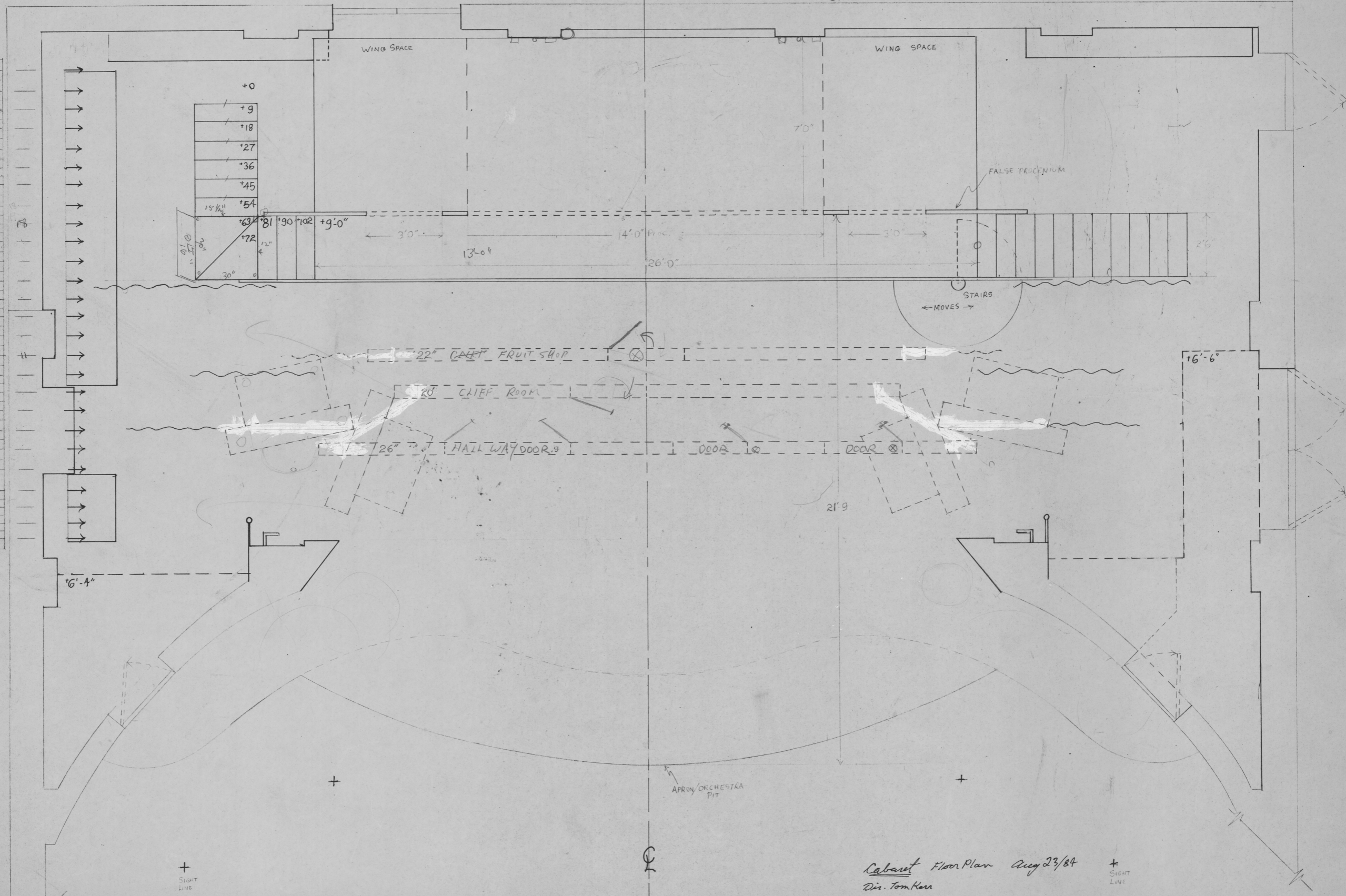


GROUND PLAN
NEPTUNE THEATRE
CABARET

SCALE: 1/8" = 1' S.J. DEGENSTIEN

- 14 BLACK SCRIM
- 11 FRUIT SHOP
- 9 CLIFFS' ROOM
- 6 HALL WAY
- 5 SHOW CURTAIN
- 2 HOUSE CURTAIN
- 1 FIRE CURTAIN



Cabaret Floor Plan Aug 23/84
Des. Tom Kern

+
SIGHT
LINE

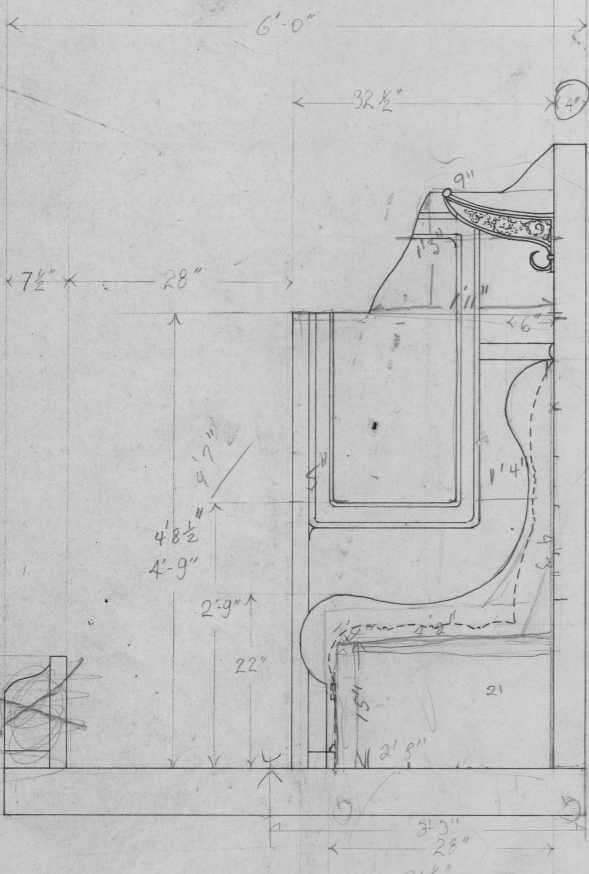
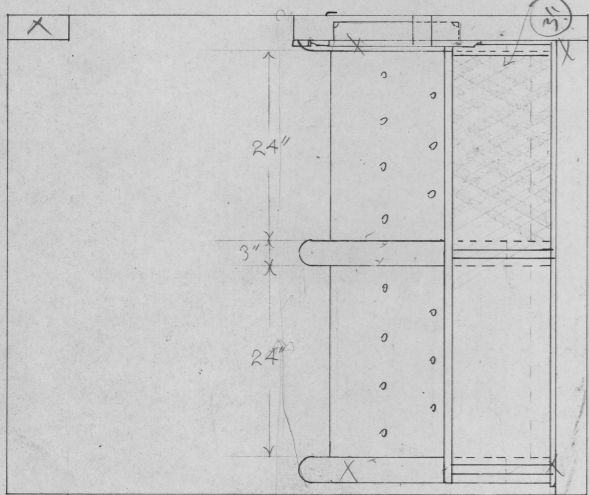
+
SIGHT
LINE

CABARET TRAIN UNIT

Sept 9/84 SCALE 1"=1'-0"

2 @ 4 1/2" 2 @ 6 1/2"
 2 @ 4' 9" 1.35
 1 @ 7 1/2"

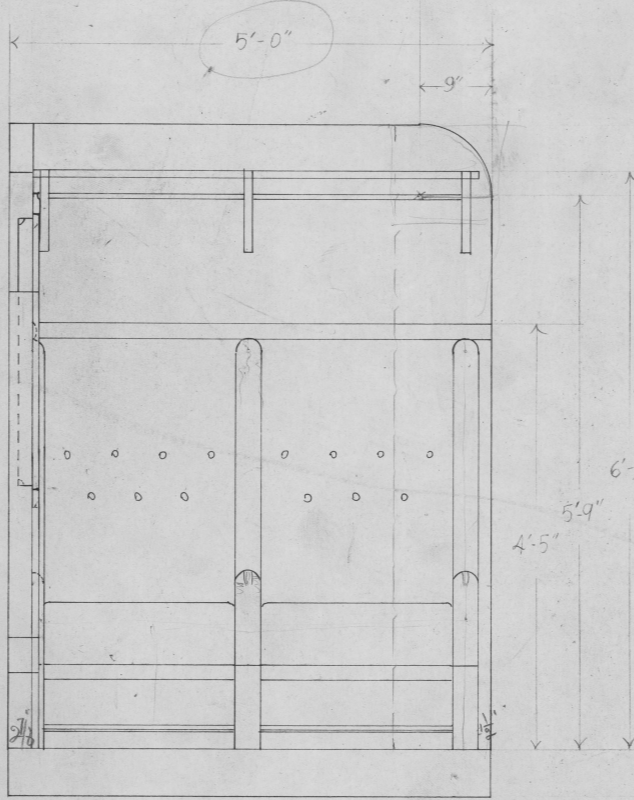
Burlap Straps 1 1/2" wide



119
 2 1/2
 5 1/2
 15 1/2
 1 + 2 1/2
 1 + 2 1/2
 1 + 15
 1 x 18
 20 3/4

6'-6" 7'-0"

6 1/2
 1 + 2 1/2
 1 + 3 1/2
 2 x 2 1/2
 2 x 3 1/2
 4 x 4 10 1/2



5 3/4 + 5 1/2 x 1 1/2

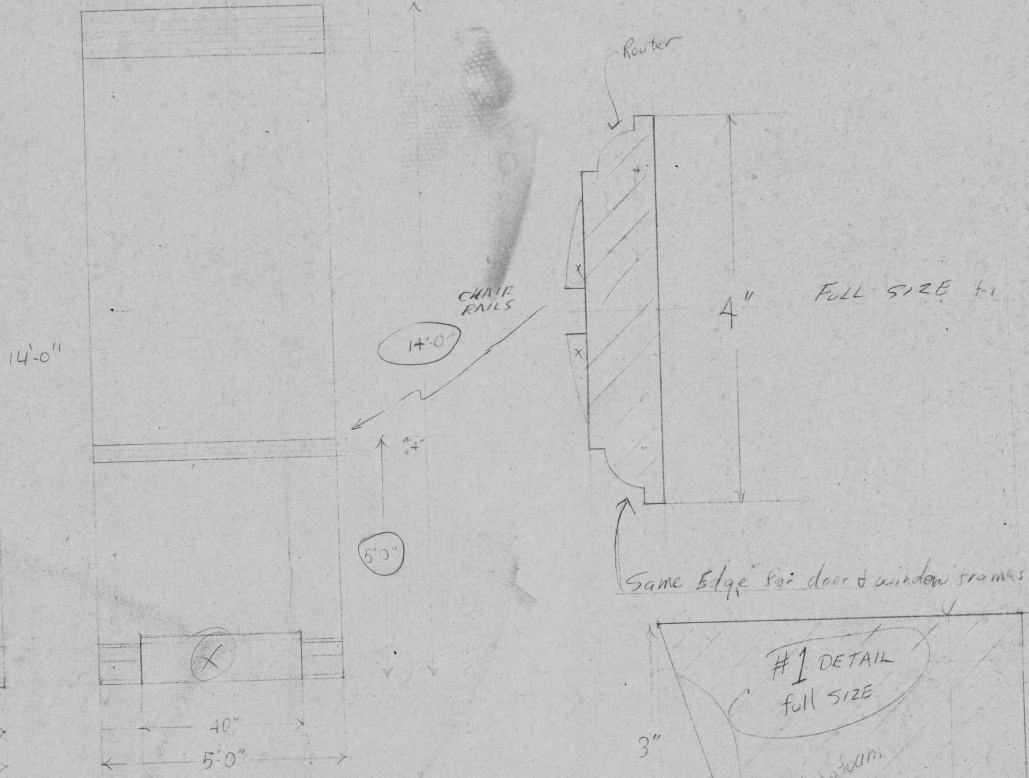
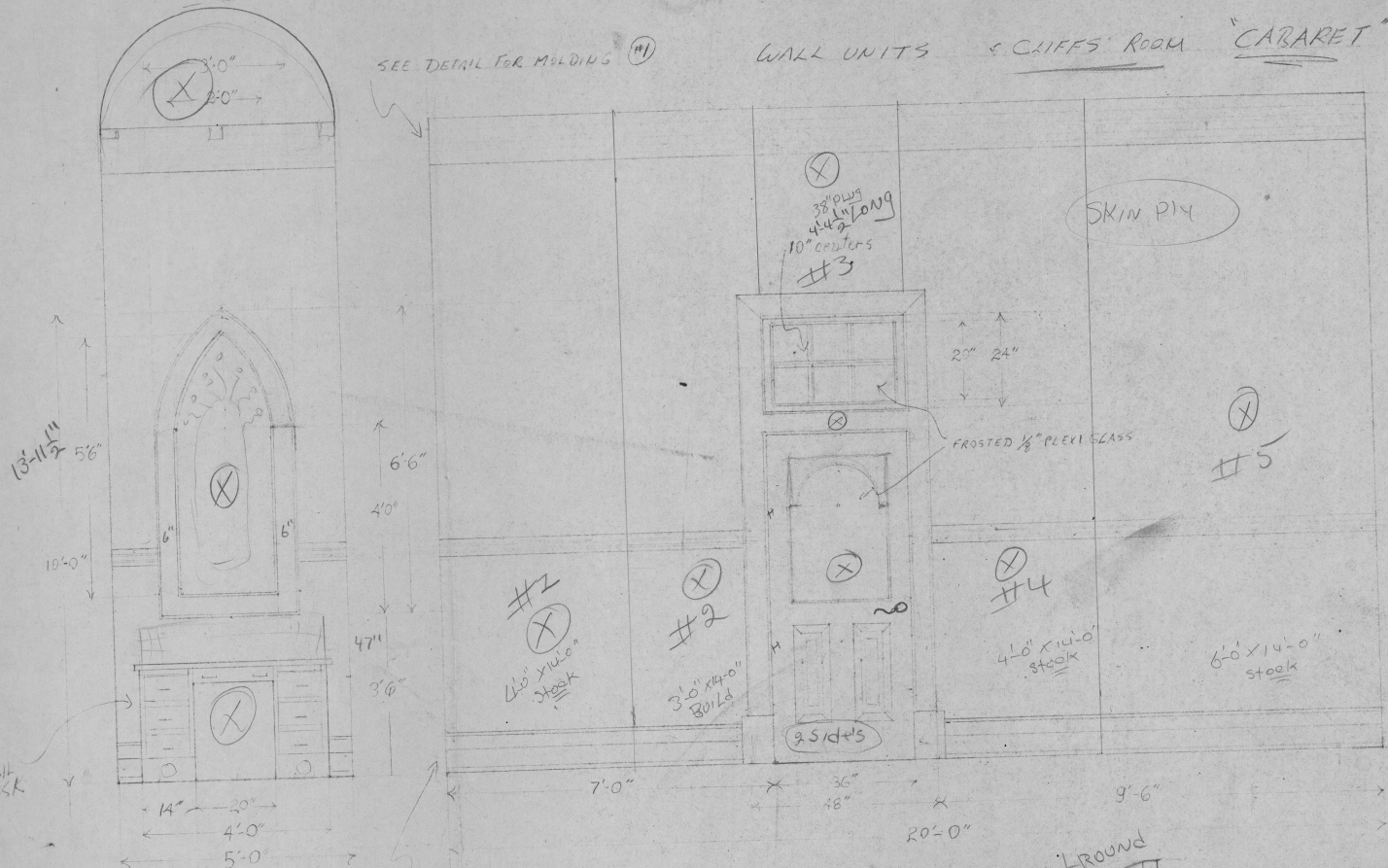
1st SEAT 4' 6" + 2' 3"
 2nd SUPPORTS 2' 2 1/2" + 15 1/4"

59 1/2

DIR TOM KERR DESIGN S. J. DEGENSEIN

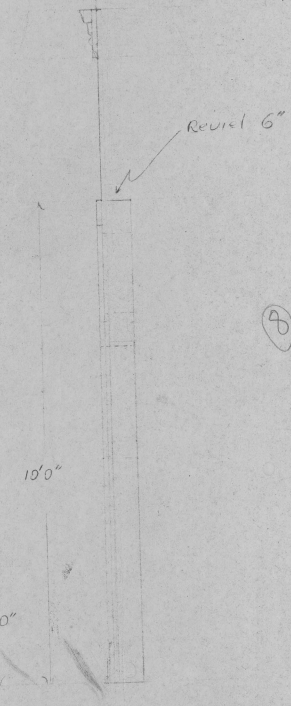
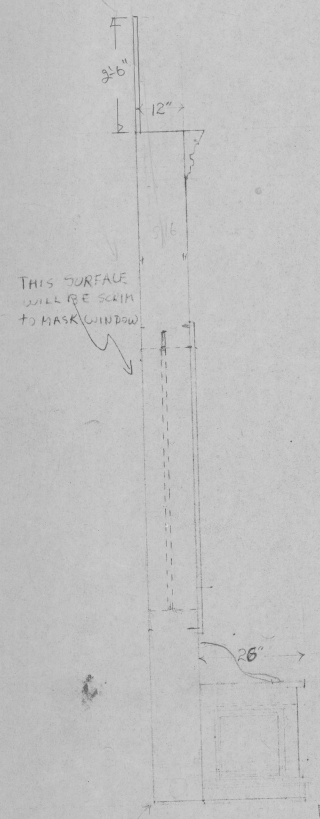
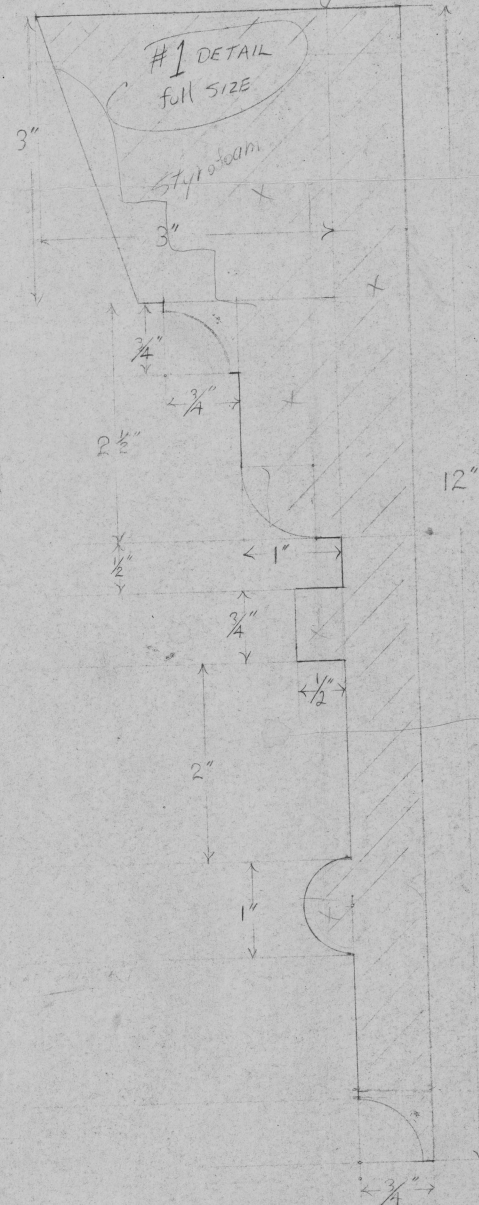
WALL UNITS & CLIFFS' ROOM "CABARET"

SEE DETAIL FOR MILDING #1



SEE DETAIL FOR DESK

SEE DETAIL FOR BASE BOARD #2



THIS FACE WILL BE DRESSED FOR CABARET SETTINGS T.V. Style flat 12" THICK

SEE DETAIL FOR FOLDUP BED

1/2" clearance for casters Door stops to brake unit

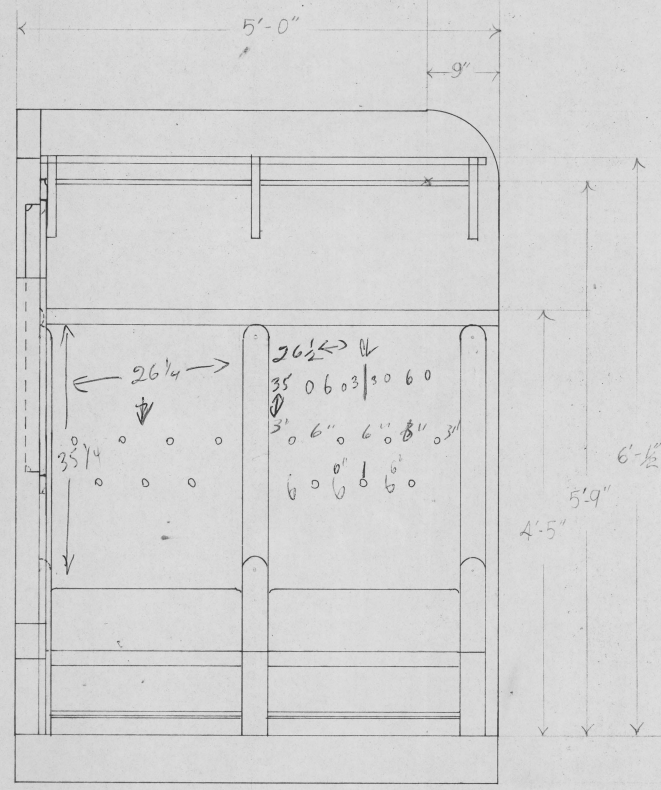
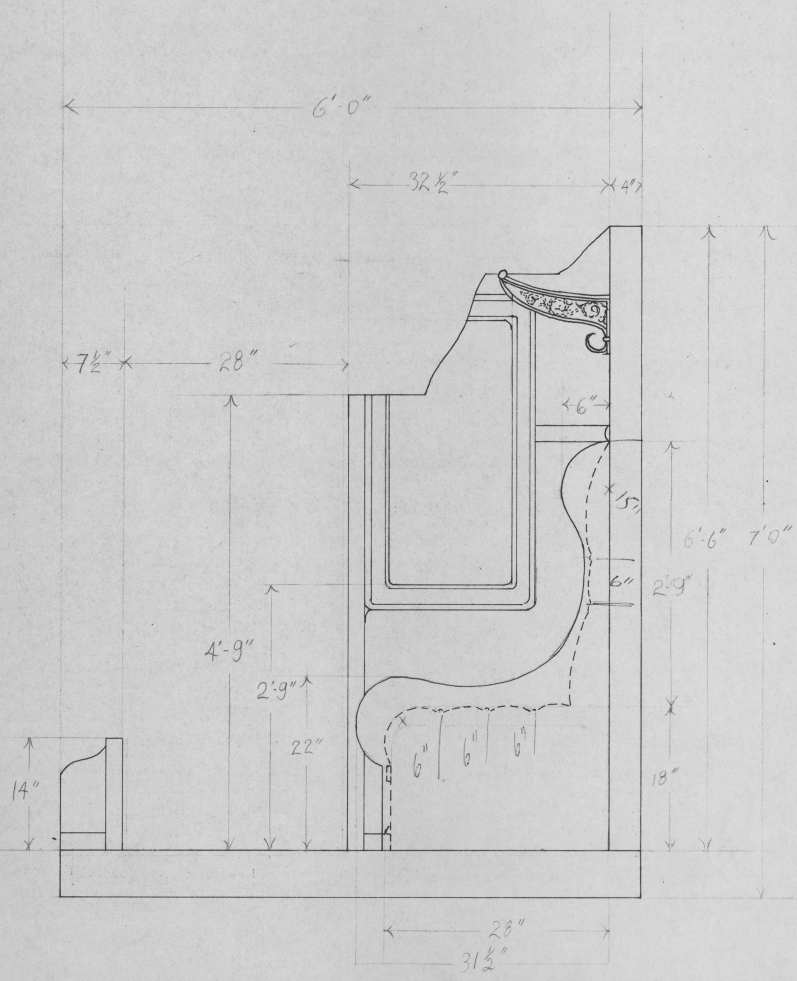
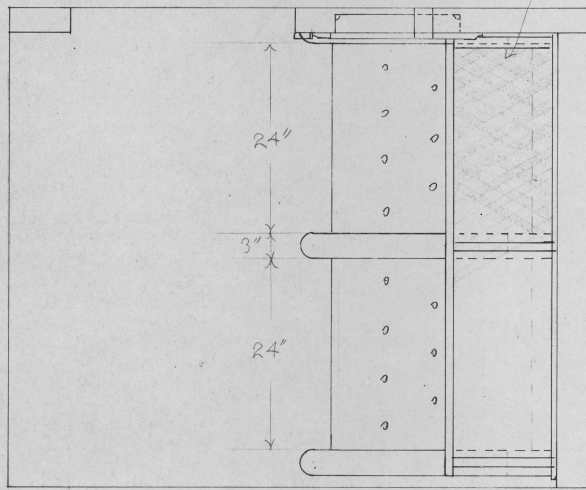
fastened to wall section

note: Bed & Desk ARE BUILT INTO WALL UNITS THEY WILL BE CASTERS AND WEIGHTED

CABARET TRAIN UNIT

Sept 9/84 SCALE 1"=1'0"

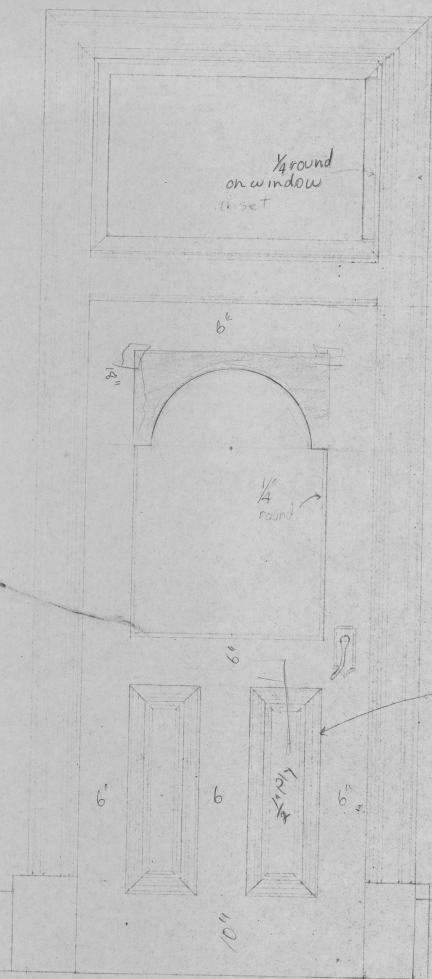
Burlap Straps 1 1/2" wide



2 Sides 33 x 26 1/2

SHEET # 6

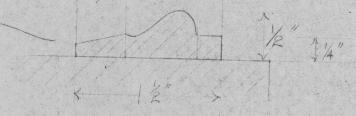
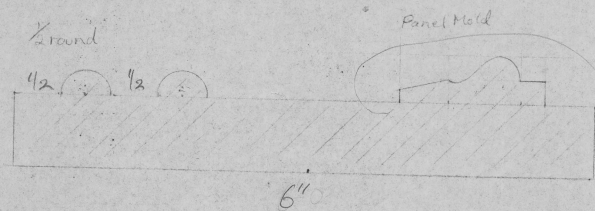
CABARET MOULDING DETAIL CLIFFS ROOM & HALLWAY



Note: router edges separating Door & Transom

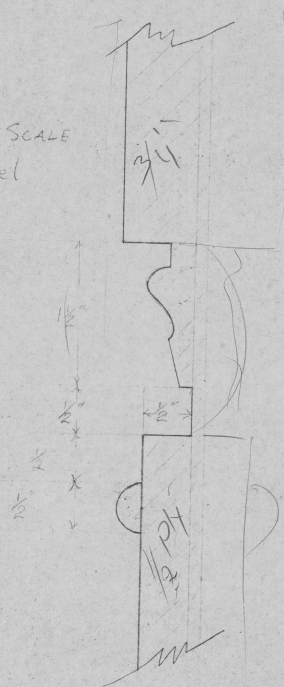
6"

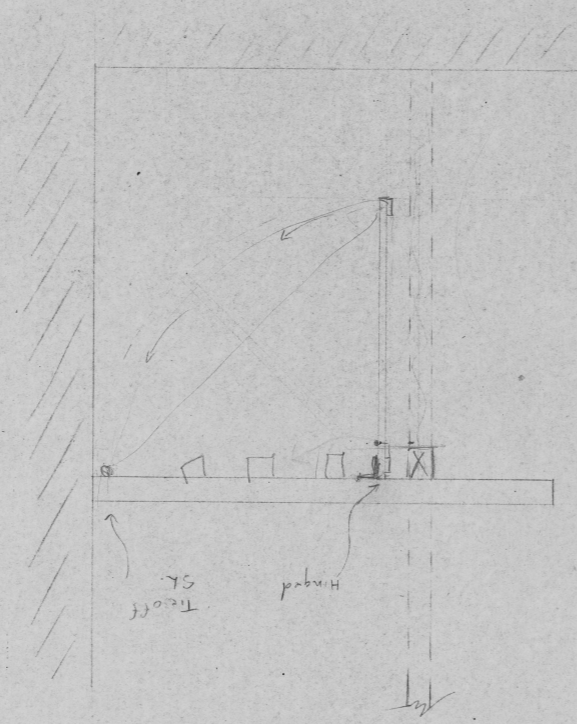
Full Scale



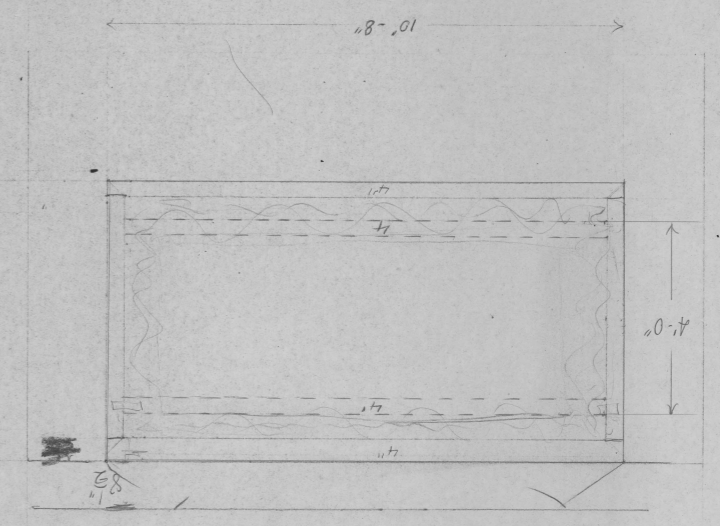
SCALE 1" = 1'-0"

Full Scale Door Panel

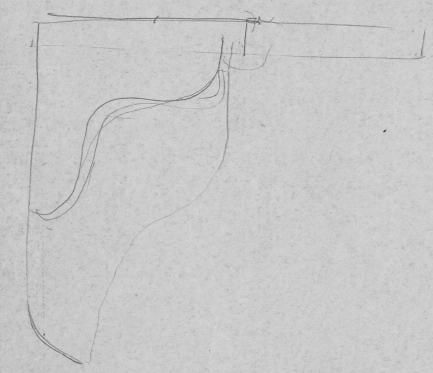
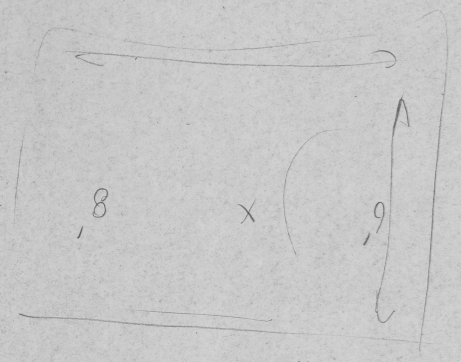




SCALE 1/8" = 1'-0"

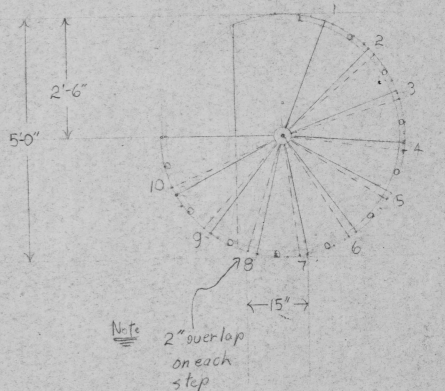
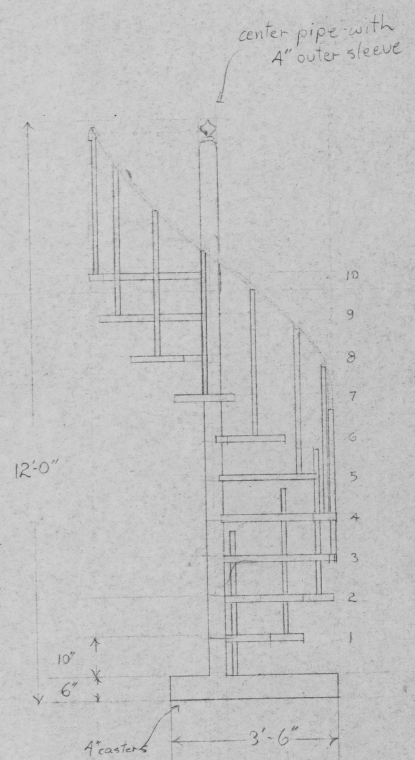
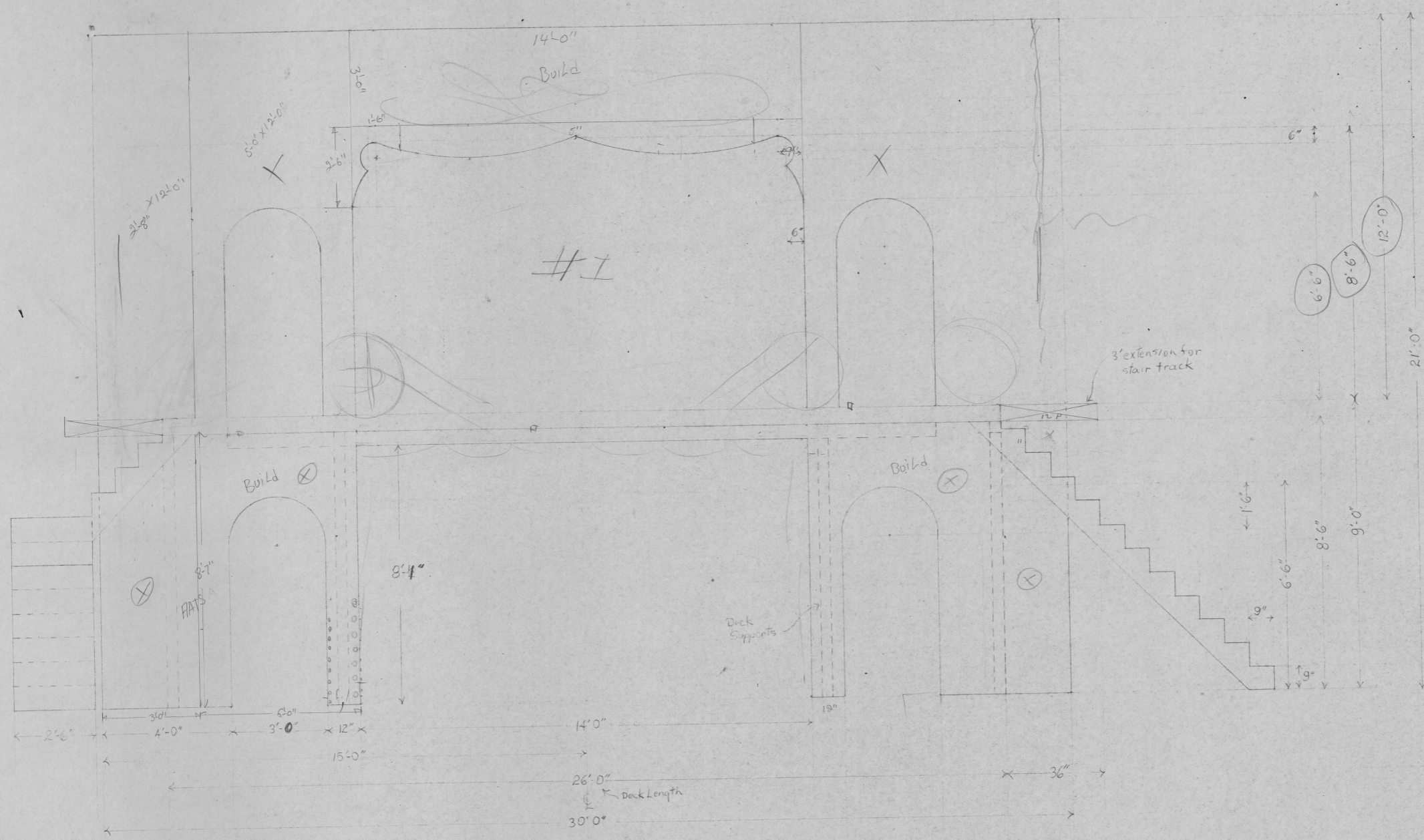


Mirror for tower Proc. Tilts upward
 A wide picture frame - shrink in year to
 internal frame
 Will be hinged to lower ceiling - adjustable angle

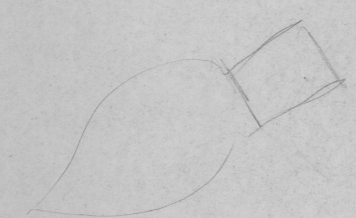


SHEET # 8

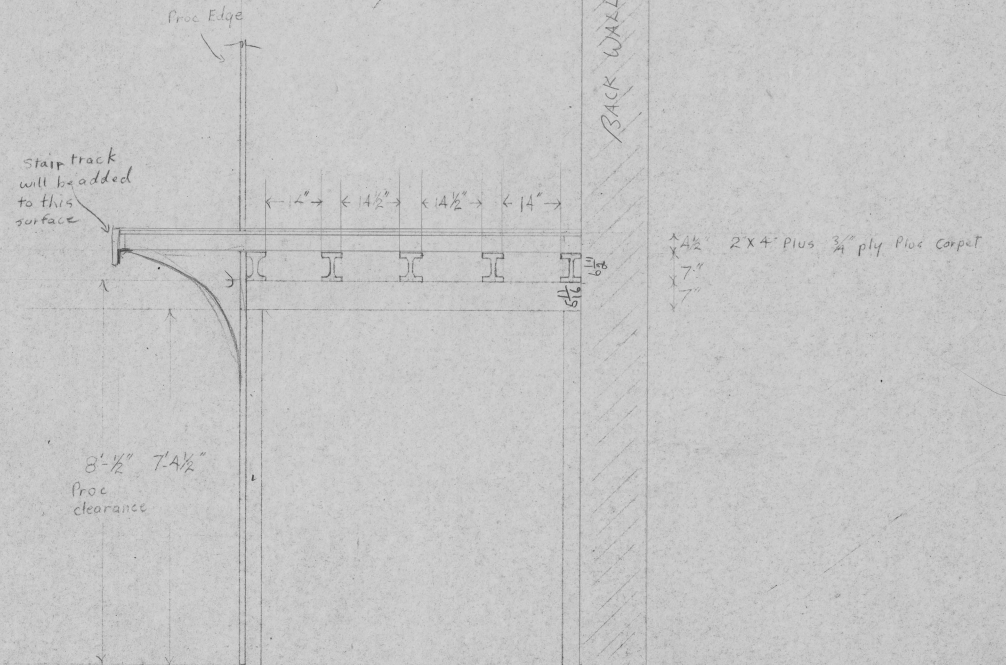
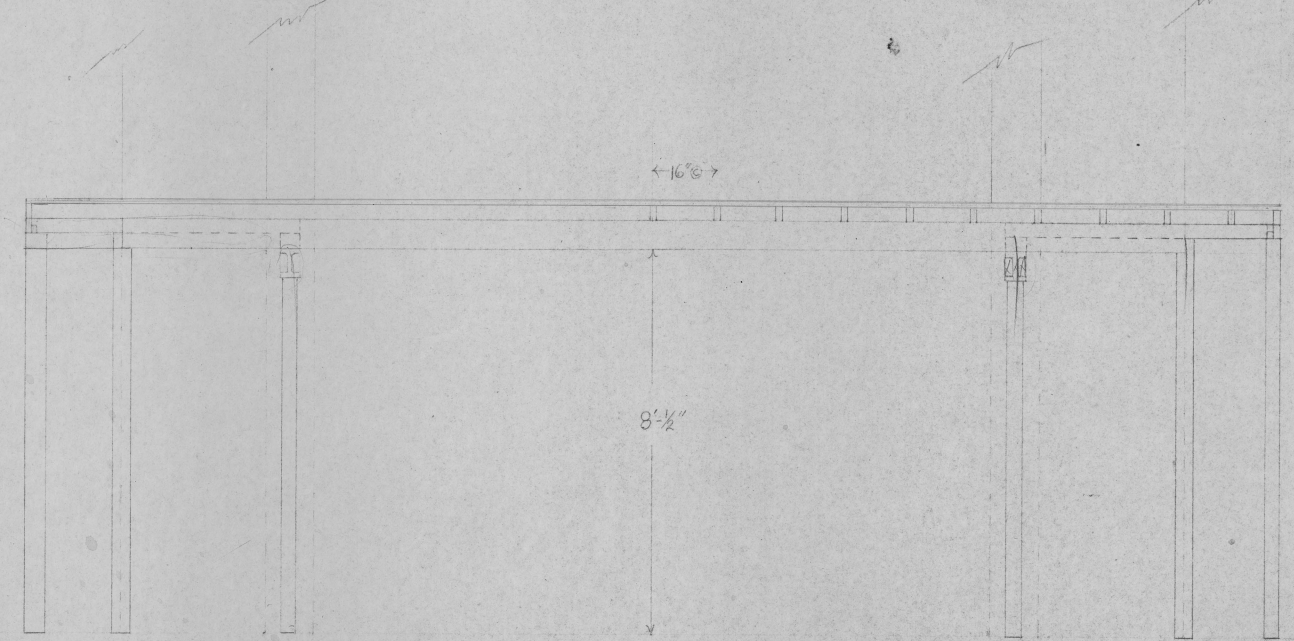
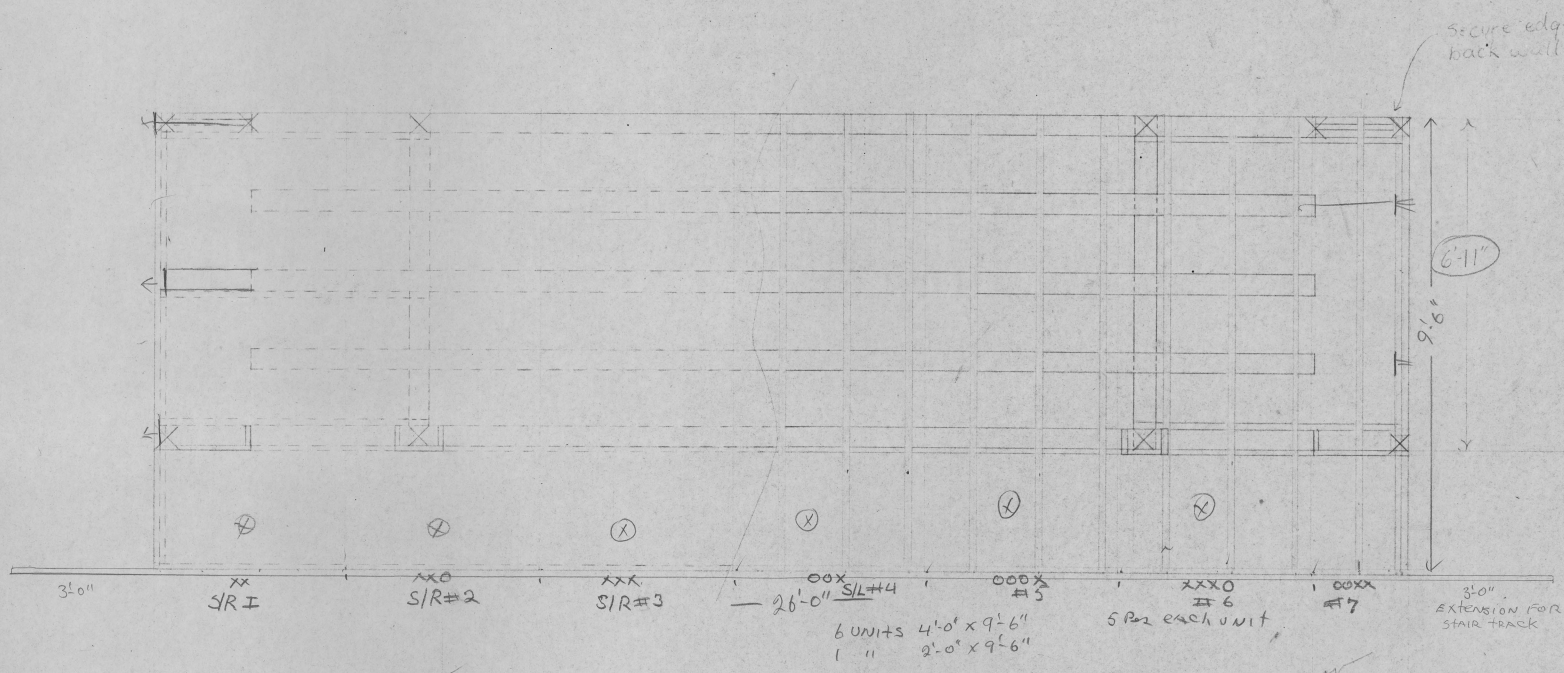
- 4 - 4" x 10'8"
- 2 - 4" x 5'10"
- 1 - 8 1/2" x 10'8" ?



Note: 6" reveal around all inside cuts

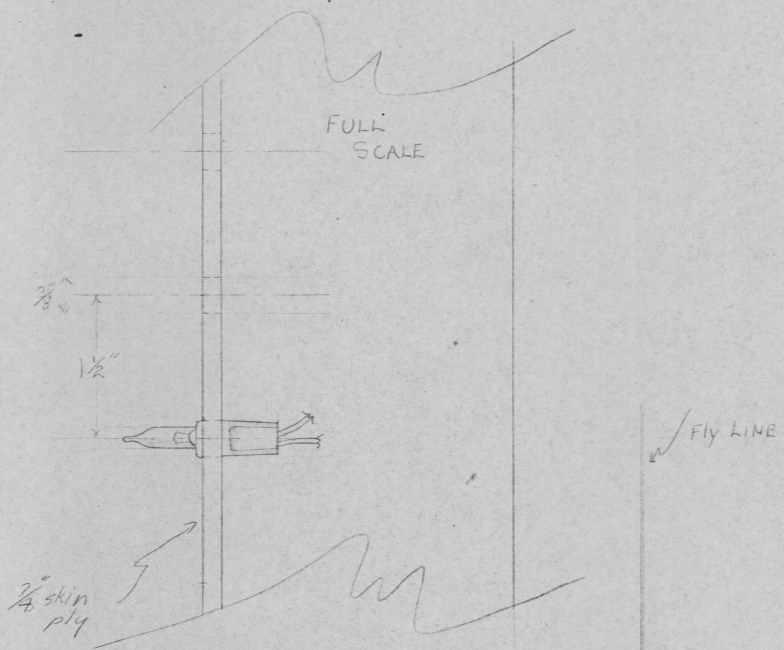


CABARET DECK DIR TOM KERR Sept 9/84 SCALE 1/2" = 1'-0"
 DRAWN S.S. DEGENSTEIN



CABARET SIGN

same lites at 1/2" centers. Each
letter individually circuited
C-64 A-83 B-
FRICTION FIT (perhaps red lights?)



SCALE 1" = 1'-0"

(X)

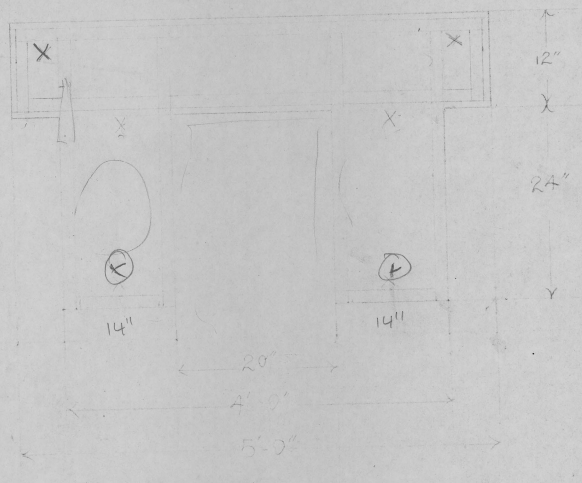
B 1 pc 2' x 4' x 3/4"
 S 4 pcs 22 1/2' x 29' x 3/4"
 F 2 pcs 14' x 29' x 3/4"

CABINET OR WALL UNIT WITH BUILT IN DESK
 SCALE 1/2" = 1'

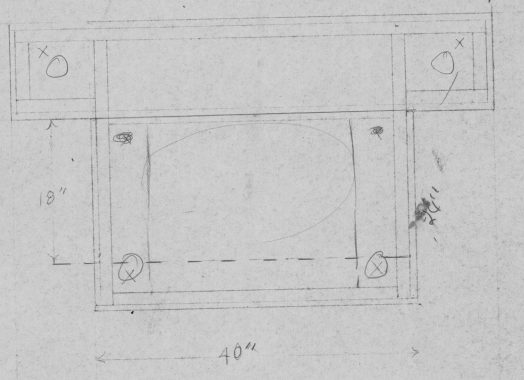
SHEET #7

Top

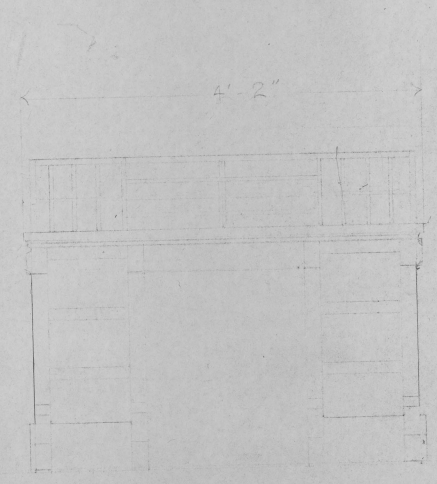
4 casters



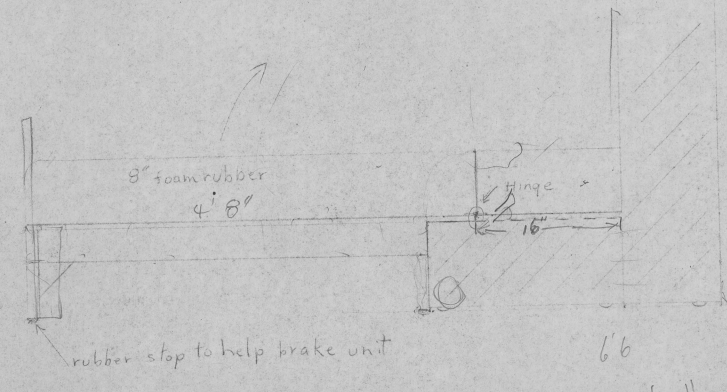
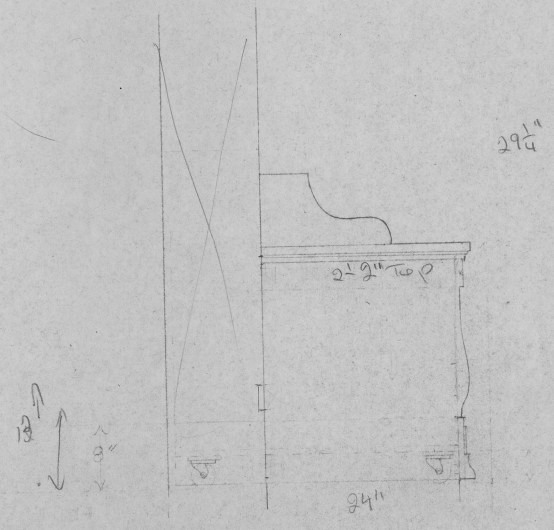
4 casters



48
 20



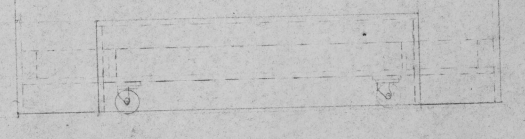
3 copies



66

21 4 1/2" 31 38 1/4

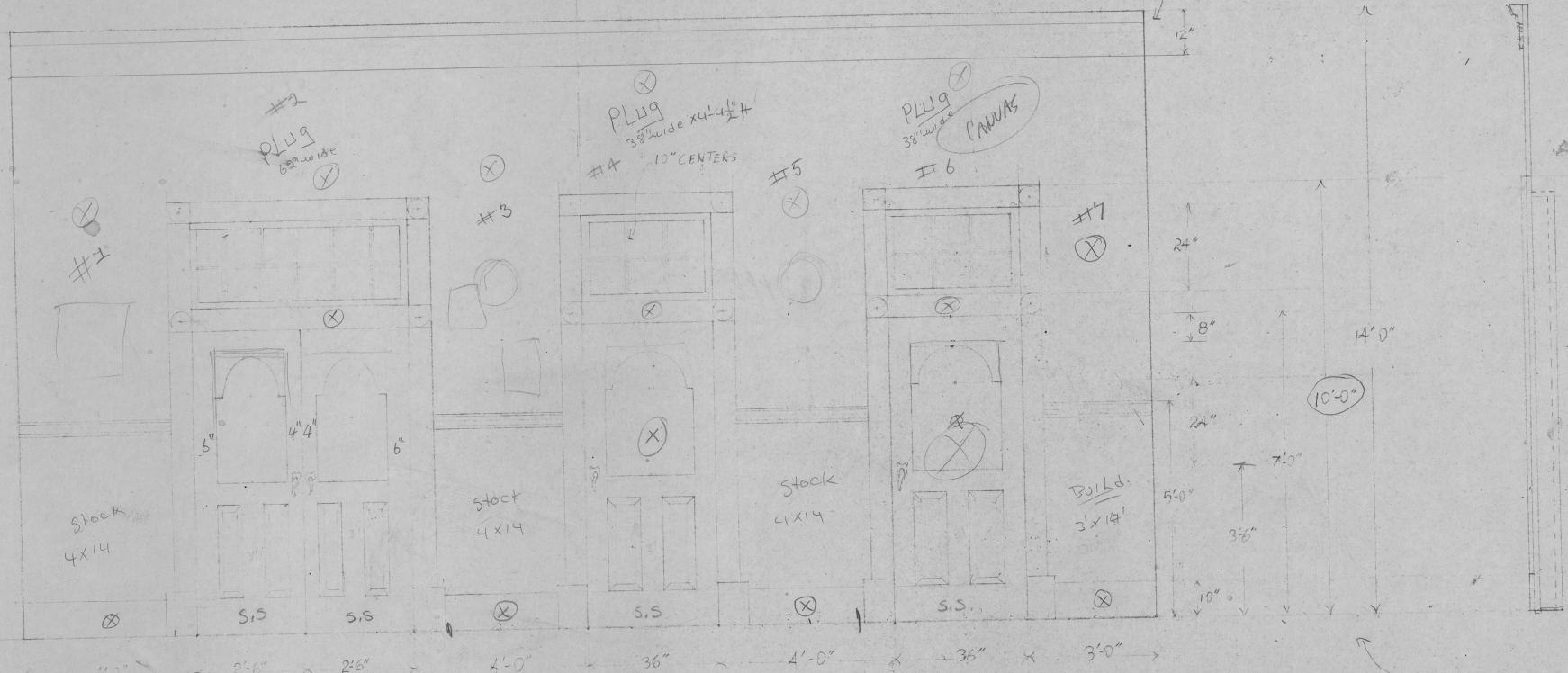
12



4 13/16

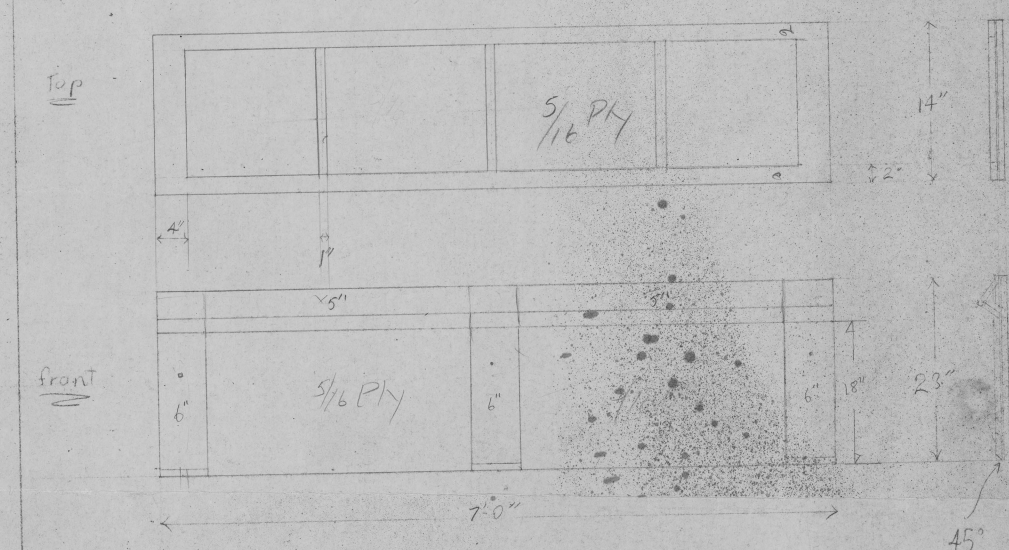
HALLWAY CABARET

SCALE 1/8" = 1'-0" ALL MOLDINGS SAME AS SHEET #1

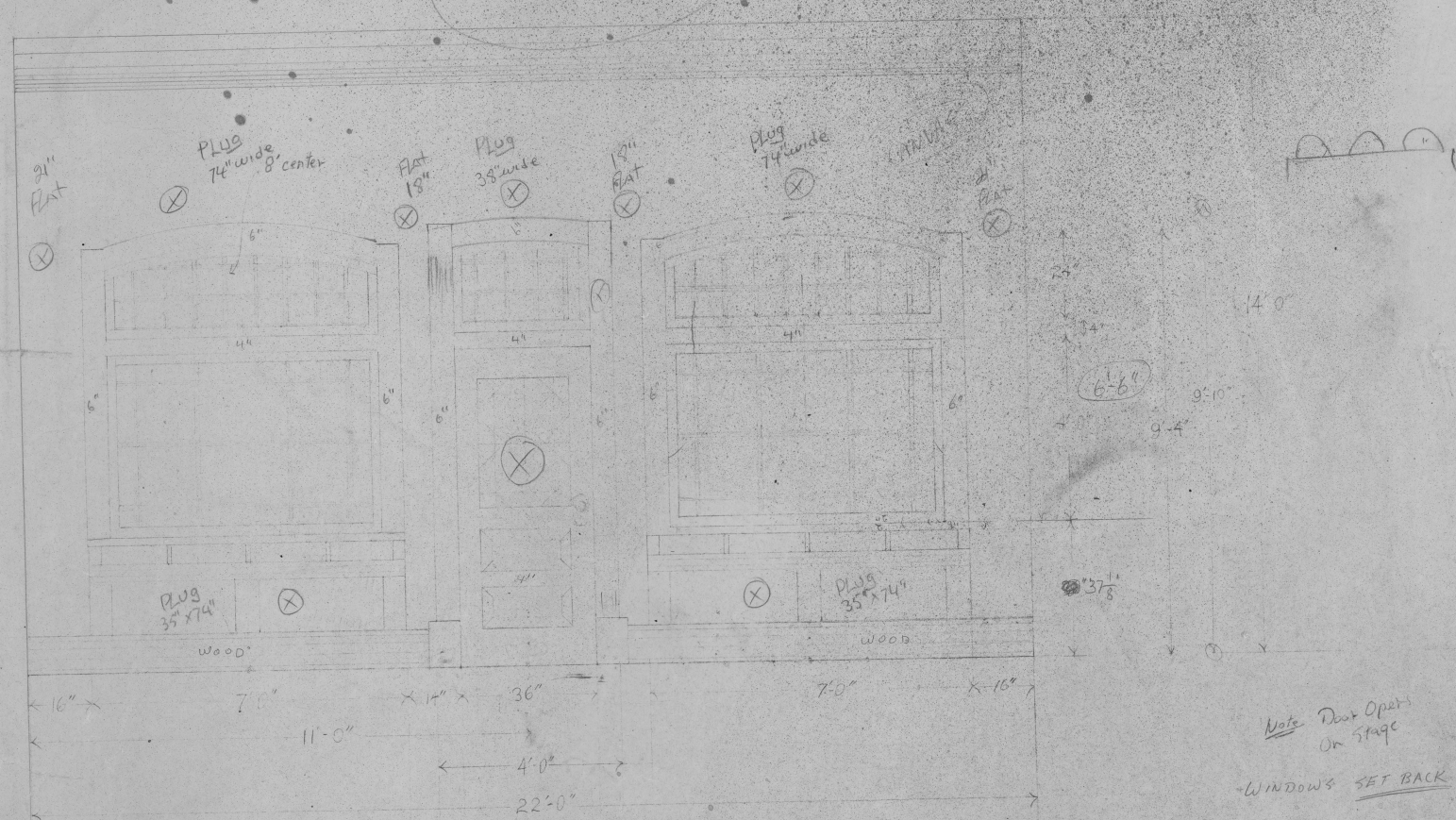


fruit stand

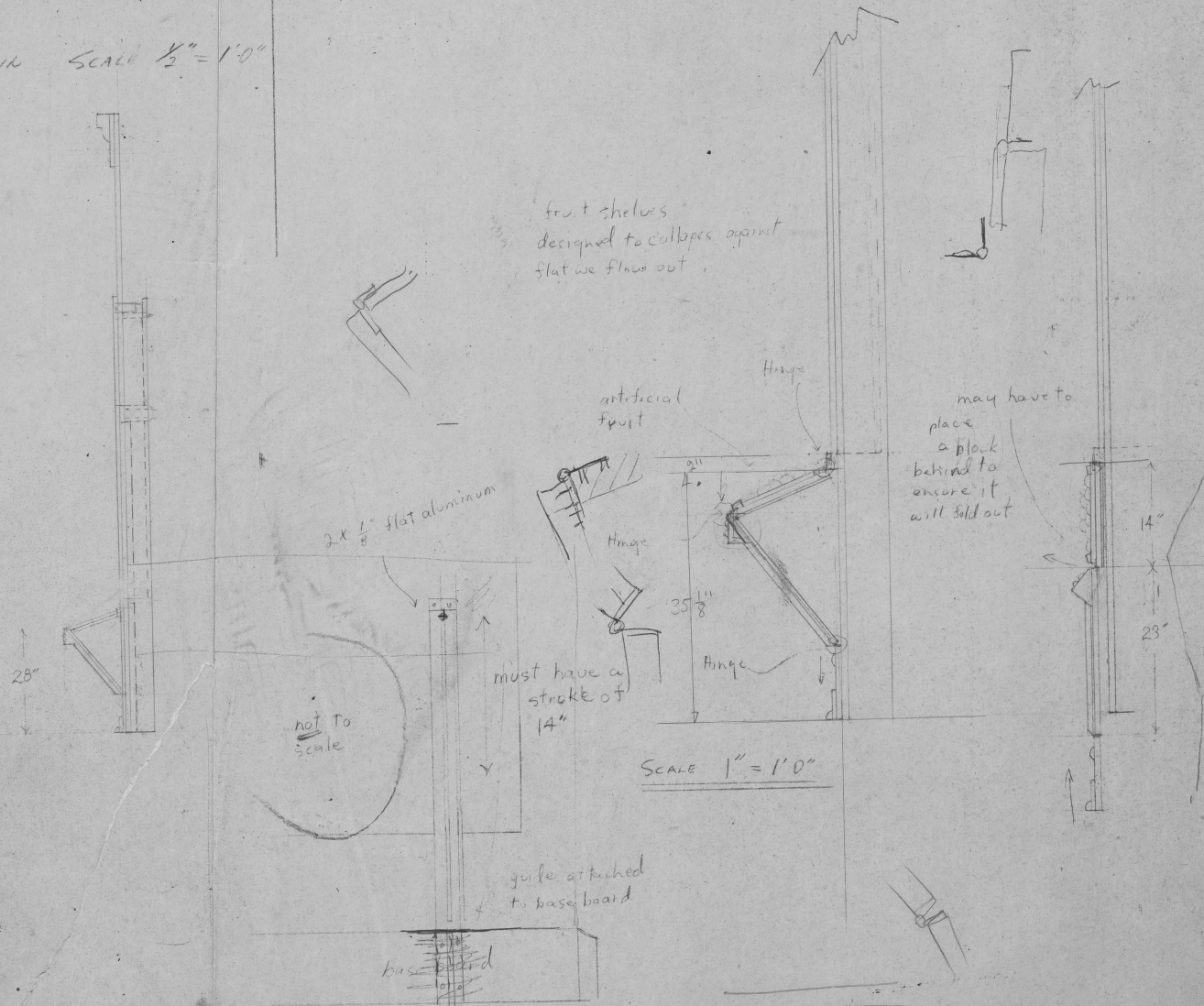
Scale 1" = 1'-0"



FRUIT SHOP CABARET OR TOMMYER DESIGN BY DECKSTEIN SCALE 1/2" = 1'-0"



fruit shelves designed to collapse against flat we flow out



Note Door Open On Stage
WINDOWS SET BACK