

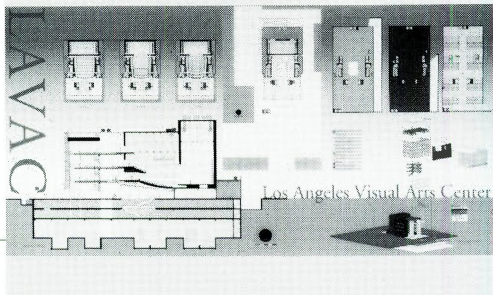
1

## W I N T E R   2 0 0 2

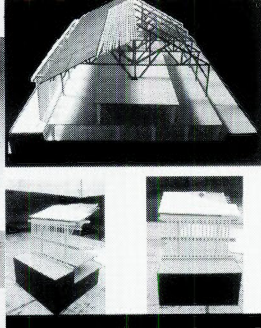
The Faculty of Architecture and Planning is pleased to announce our new name. At its November meeting, the Dalhousie Board of Governors approved the Faculty of Architecture's recommendation to revise its name to provide greater visibility and clarity for the Faculty's areas of teaching, research and future development. The School of Planning has replaced the Department of Urban and Rural Planning and the title of its head is now Director. These changes are in keeping with University practice to place professional programs in Professional Schools and better reflect Planning's significance in the activities of the Faculty. \*\*\* The newsletter evolution continues with the addition of Faculty Profiles. We hope you enjoy the introduction to **Dr. Jill Grant** and the update on the activities of **Professors Grant Wanzel** and **Niall Savage (M.Arch.89)**. With this issue we are also piloting distribution of the newsletter via e-mail attachment to a sample of our readers. We welcome your feedback. Please let us know if you prefer to receive the electronic version or remain on our paper mailing list. \*\*\* The School of Planning's annual winter module is being organized in partnership with Evergreen and the Ecology Action Centre. "Breaking Ground: Greening the Urban and Regional Landscape," is scheduled for 20 – 22 March at Pier 21. The event will interest students and professionals in parks and recreation, education, engineering, landscape architecture and planning as well as developers, naturalists, environmental activists, and local government and education decision makers. Belgian architect, **Lucien Kroll** will be the keynote speaker. For further information visit [www.dal.ca/planning](http://www.dal.ca/planning) or phone 902 494 2774. \*\*\* The School of Architecture is offering 2 design/build research laboratories this summer. **Richard Kroeker** is coordinating "Inhabiting the Edge," with **Halldor Gislason**, Head of the Department of Design, Icelandic Academy of the Arts. The studio will take place during the first 2 weeks of August on the coast of Iceland.

Brian MacKay-Lyons' "Ghost" will take place on the Nova Scotia coast near Lunenburg in July. These programs have been created for design practitioners, students and professors. Further details are available at [www.dal.ca/architecture](http://www.dal.ca/architecture). \*\*\* The work of the Atlantic Modern project continues. The exhibition curated by **Steven Mannell**, "Atlantic Modern: The Architecture of the Atlantic Provinces 1950 – 2000," is being prepared complete with a full catalogue for travel. We continue to seek nominations and information regarding exemplary buildings constructed in New Brunswick between 1950 and 2000 to supplement the 26 buildings previously included. A description and street address is sufficient to begin research. Contact [steven.mannell@dal.ca](mailto:steven.mannell@dal.ca) \*\*\* The Glengarry Foundation has once again committed funds to assist a student studying in the Faculty. We wish to thank the Foundation for the ongoing support it offers our students through its bursary program. \*\*\* Rosetti Scholarships have been awarded to Master of Architecture students **Christopher Bowes**, **Lee Cameron**, **Jonathan Gottlieb**, **Florian Jungen**, **Monique MacEwan** and **Vincent Siu** to enable them to travel to Paris to work with **Frank Palermo** on research for the History and Theory of Cities course. Other recent scholarship recipients include **Mark Anson** – Harry Kitz Fund; **Ben Cotter** – Mobil Oil; **Stephanie Davidson** – MT&T Ambassadors; **Jesse Hindle** – Birks Family Foundation; **Vjekica Sucic** – Nova Scotia Association of Architects; and **David Vera** - William Nycum & Associates. \*\*\* Environmental Planning student, **Jason Rokosh**, won first prize in a logo contest sponsored by the Association of University Planning Programs. \*\*\* **Ted Cavanagh** and **Alison Evans** were invited to present their research at the International Commission of Monuments and Sites meeting in Halifax as part of the session themed "Coastal Towns: Strategies for Preserving Local Livelihood." A short form of the presentation will be published in

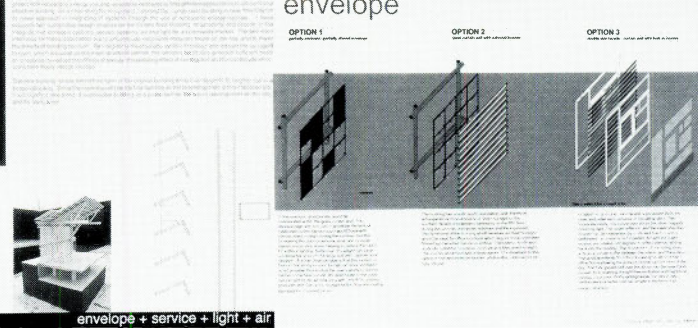




2



3



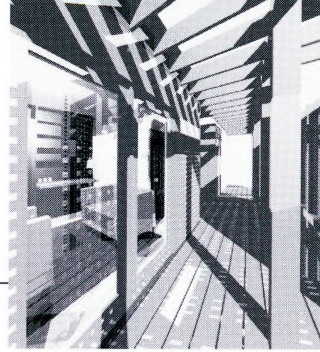
4

*Momentum* in March. Ted was keynote speaker for the Books and Buildings Seminar at the University of Texas at Austin in December and while there participated in end of term design reviews. He also visited the University of Arkansas as a member of the accreditation team. \*\*\* **Tom Emodi** is serving on the team for the University of Tennessee's accreditation review. \*\*\* **Jill Grant** traveled to Japan in October to participate in an international forum on managing cities for sustainability. She is currently working with colleagues in Japan editing a book based on several of the papers at the workshop. In December she was an invited speaker at the "Alberta Minister's Symposium on Schools." The same month, she was Senior Editor of *Plan Canada's* issue titled "Can We Control Growth?" \*\*\* The University of Arkansas has appointed **Brian Mackay-Lyons (B.Arch.78)** as John Williams Visiting Professor for Winter 2002. Brian traveled extensively last term, giving public lectures in 9 North American cities. His work has been included in 3 new books: *house*, *American Houses for the New Century*; *The Cabin*; and *Country Modern*. \*\*\* **Christine Macy** and **Sarah Bonnemaison** have a contract with Routledge for the publication of their book *The Construction of Nature in American Architecture, 1893-1967*. They have begun presenting chapters from the book at conferences in Canada and the US. It is expected to be available in bookstores before the end of 2002. Sarah is chairing a session on festival architecture at the Society of Architectural Historians conference in Richmond, Virginia. She is also presenting and discussing "Festival Architecture and Temporary Urbanism of the North Indian RamLila" at Harvard's Center for the Study of Landscape during a symposium on "Ritual Landscapes." Locally, Sarah is involved with the Atlantic Dance Festival as set designer for **Veronique Mackenzie Bourne's** performance on 08 & 09 March at the Dalhousie Arts Centre. \*\*\* **Peter Yeadon (M.Arch. 89)** has been appointed Visiting Professor at Cornell University. Peter had been lecturing at universities in North America and Europe while teaching at the University of Toronto. The Canadian Centre for Architecture has recently established the "Fond Peter Yeadon Archive," a resource for researchers and institutions to refer to

his collected works. \*\*\* **Susan Turner's (M.Arch.89)** column, *Heritage Matters*, is published quarterly in *Heritage Canada Magazine*. She is continuing her work as representative for the Manitoba Association of Architects on the City of Winnipeg's Historic Buildings Committee. \*\*\* *Canadian House & Home* published **Brian Kucharski's (M.Arch.91)** Toronto apartment in its January/February issue. \*\*\* **Stephanie Forsythe (M.Arch.01)** and **Todd MacAllen (M.Arch.01)** have just won first place in the final stage of a two-stage competition to design a community of 200 housing units and related facilities in the city of Aomori, Japan. The jury included architects **Tadeo Ando** and **Jean Nouvel** as well as Aomori city councilors and officials. In December Todd received the *Canadian Architect* Student Award of Excellence for his thesis "A Strategy for Design with Intention to Improve During Construction." \*\*\* Other alumni receiving 2001 *Canadian Architect* awards were **David Battersby (M.Arch.95)** and **Heather Howatt (M.Arch.95)**, with assistance from student **Tyler Sharp**, for "Staebling Residence." \*\*\* **Barry Johns (B.Arch.72)** has been named an Honorary Fellow of the American Institute of Architects College of Fellows. This prestigious honor is granted annually to only 5 architects world wide. \*\*\* The University, in partnership with the Nova Scotia Association of Architects, has purchased the *Architectural Liscensing Seminars*. These NCARB Architectural Registration Exam study guides are on reserve at the Sexton Design and Technology Library and can be borrowed for up to 7 days. \*\*\* Part-time instructors this term include **Peter Bogaczewicz (M.Arch.01)**, **Howard Epstein**, **Susan Fitzgerald (M.Arch.99)**, **Peter Henry (B.Arch.78)**, **Drew Klassen (M.Arch.92)**, **Brian MacNeish**, **Eugene Pieczonka** and **Steve Sekerak**. \*\*\* Visiting lecturers were **Trevor Butler**, **Burton Hamfelt** and **Don Murphy**.

paula.costello@dal.ca

- 
1. Lucien Kroll, Breaking Ground, keynote speaker
  - Building Systems Interface presentations
  2. Cameron Veres, Los Angeles Visual Arts Centre
  3. Katie Everett, Public Market, Granville Island
  4. Aneiren Smith, Mixed Use Development, Toronto



1

## GRANT WANZEL AND NIAL SAVAGE

In addition to their busy teaching schedules and committee work both **Professors Grant Wanzel** and **Niall Savage (M.Arch.89)** have extensive commitments in research and practice: Niall as a successful sole practitioner and Grant as President of the Creighton/Gerrish Development Association (C/GDA). An ambitious project of the C/GDA has brought them together as 'developer/client' and architect.

Halifax's Old North End has long been the focus of renewal programmes. Despite some promising results, pockets of substandard housing and underutilized or vacant real estate threaten the completion of the neighbourhood's regeneration. For more than 15 years the block bounded by Creighton, Gottingen, Gerrish and Cunard Streets, has seriously compromised what has been accomplished.

The Creighton/Gerrish Development Association is a partnership of 4 community-based, non-profit societies experienced in human resource development, community social and economic development, and non-profit housing design, development and management. It was established in 1995 with the sole purpose of acquiring and developing a \$9 million mixed-use, infill and renewal scheme on this strategically important block. On completion, the development will include: a 19 unit apartment building for very low-income single persons; up to 52 units of affordable housing for purchase by neighbourhood residents; and a 20,000 square foot multi-purpose centre for the City's black community.

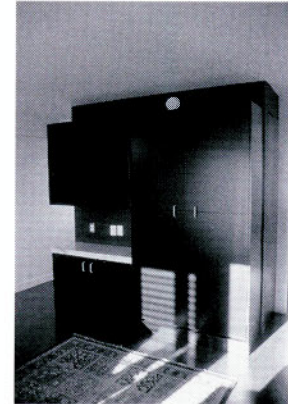
The first component of the Creighton/Gerrish Development is the handsome new building designed by Niall Savage at 2330 Gottingen Street. The finished building has a strong presence on the street. It is efficiently organized, carefully detailed and well constructed. The accommodations include 18 fully furnished, self-contained, radiant heated, bachelor apartments of approximately 320 square feet each, a 1-bedroom manager's apartment and an owner's office for the Metro Nonprofit Housing Association. All enjoy views of both street and garden, a laundry room, and a housing support centre. The south-facing garden court will be landscaped in the spring. The official opening was celebrated on 15 February 2002, one month after the tenants moved in.

As a whole, the Creighton/Gerrish Development involves the co-operation and financial support of all three levels of government, but will accomplish its objectives without continuing subsidies. It is at the leading edge of practice in affordable housing design and development and is acting as a model for similar initiatives across the country. The remaining components of the Creighton/ Gerrish Development will be realized over the next few years.

Both Grant and Niall can be reached by calling the Faculty of Architecture and Planning at 902 494 3973 or by e-mail: [grant.wanzel@dal.ca](mailto:grant.wanzel@dal.ca); [niall@nsarch.com](mailto:niall@nsarch.com).



2



3



4

## JILL GRANT

When **Jill Grant** first came to Halifax in 1979, she didn't plan to stay for long. "I expected to spend a few years here and then move on to pursue international development planning activities." But Nova Scotia wooed her as it does so many. "Before I knew it, I was studying planning issues and practice in Nova Scotia, and this became my home."

Jill earned an MA in anthropology at McMaster University before turning to planning. Research stints in the Canadian Arctic and in Papua New Guinea convinced her that she wanted to develop skills to help remote communities deal with the problems they faced. She enrolled at the University of Waterloo where she obtained both an MA and a PhD, and became a planner.

In 1979 Jill joined the environmental planning faculty at the Nova Scotia College of Art and Design. Through the last two decades her research has focused on many aspects of the culture of planning: the values of planners; the dynamics of land use disputes; the characteristics of urban environments; and the nature of practice. In recent years, she has received research funding from the Social Sciences and Humanities Research Council, Canada Mortgage and Housing Corporation, and the Japan Foundation.

"The move to Dalhousie opens exciting new opportunities for us," Jill says. She welcomes the resources provided by a larger university, and the potential for developing new collaborations. "I feel very comfortable moving into the Faculty of Architecture and Planning – I think planning thrives in a

design context." She sees the enlarged planning school as having greater strength than the two groups could have apart. She welcomes the challenge of developing new programs, and reviewing the graduate program.

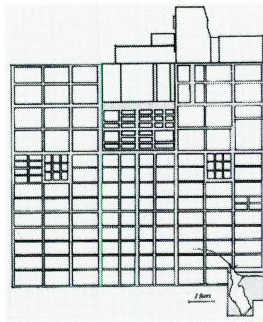
Jill is an active contributor to both professional planning and academic bodies. She publishes frequently in professional journals and is currently Chair of the Editorial Board of *Plan Canada*, the journal of the Canadian Institute of Planners. Jill is regularly invited to speak at conferences and symposia. Her recent presentations include: "From Sugar cookies to Gingerbread Men: Conformity in Suburban Design, Then and Now" at the Association of Collegiate Schools of Planning Conference, Cleveland Ohio; "Canadian Experience in Planning for Sustainable Development" at the New Approaches to Land Management for Sustainable Urban Regions Workshop, Tokyo, Japan; and "Are we there yet? Prospects and Problems in Monitoring Progress on Sustainability" at the Canadian Institute of Planners Conference, Ottawa. Jill is Program Chair for the Institute's 2003 Conference, "Building Community" to be held in Halifax.

The Social Sciences and Humanities Research Council is supporting her current work on the evaluation of the adoption of "new urbanism", with an overlay of sustainable development, as a model for community planning.

Jill can be contacted by calling the Faculty of Architecture and Planning at 902 494 3973 or by e-mail: [jill.grant@dal.ca](mailto:jill.grant@dal.ca)



1



2



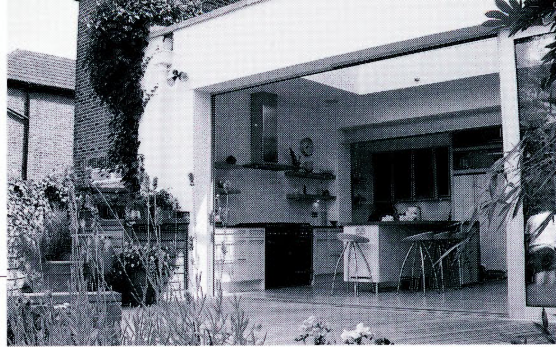
3



**DALHOUSIE**  
University

Faculty of Architecture and Planning  
Box 1000, Halifax, Nova Scotia  
Canada B3J 2X4

1. Jill Grant
2. "The Dark side of the Grid: Power and Urban Design"
3. "From Sugar Cookies to Gingerbread Men: Conformity in Suburban Design, Then and Now"



1

## KOSKI SOLOMON RUTHVEN

Koski Solomon & Ruthven (KSR) Architects is an expanding London based firm well known for their innovative and sensitive approach to urban design. **Les Koski** and **Richard Solomon** formed the practice in 1983. **Mark Ruthven (B.Arch.84)** joined the following year. **Gordon Jefferys**, who joined KSR in 1996, became a partner this year.

The fact that the four partners came to the UK from South Africa and Canada brings a unique international perspective to their work, and sets an interesting cultural backdrop to working in London. This is reflected in their design approach and their use of materials. An appreciation of landscape, the importance of light and space, and the blurring of boundaries between the interior and exterior are shown in a number of their completed projects.

Although KSR is experienced in a broad range of sectors including leisure, office and retail, they specialise in residential architecture. In addition to undertaking large scale residential schemes for developers and housing associations, the practice is well known for providing high quality and innovative modern homes for individual clients. They are currently working on several multi-unit developments and a large private house in Hampstead, north London, a new family home/business premises in London's West End and a weekend retreat on an island in the middle of the Thames in Henley.

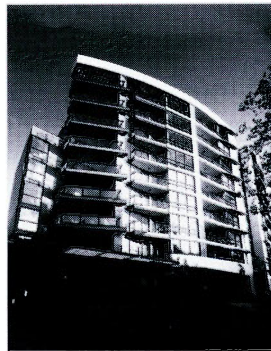
The practice has won a number of awards in international competitions including: Bibliotheca Alexandria; Parco di Centocelle, in Rome; and second place for our Faculty of Architecture and Planning Building extension. More recently KSR has received multiple awards for completed residential projects in London including the City Heritage and Civic Trust awards for Wardrobe Court near St. Paul's. Last year, the Best New Development in the Evening Standard's New Homes Awards was bestowed on the Pavilion Apartments in St John's Wood. The project was described by one judge as being both "bold and beautiful".

Over the years KSR has enjoyed close contact with Dalhousie (TUNS) as there has almost always been a student or graduate or a combination of both working in the studios in Greenland Street. The cultural backgrounds of the partners reflect in the national make up of the studio, and are manifest in a healthy rivalry and reasonable balance between the South Africans and the Canadians. Needless to say, thanks to 'foreign imports' the practice generally excels in competition with the indigenous architectural population in the Regents Park Summer Softball League.

Koski Solomon & Ruthven Architects can be contacted at: 14 Greenland Street, London, UK, NW1 0ND; tel: 020 7692 5000; fax: 020 7692 5050; e-mail: ksr@ksra.co.uk; URL: www.ksra.co.uk



2

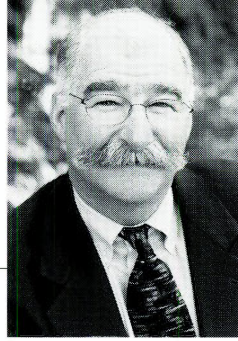


3



4





## BARRY JOHNS

Immediately after graduation **Barry Johns (B.Arch.72)** worked with **Douglas Grass** in Moncton. A year later he moved to Vancouver where he worked with **Bruno Freschi** and **John Keith-King** until landing a position with **Arthur Erickson (Hon.D.Eng.71)**, whom he still credits as an inspiration for his work. For five years, Barry was a Senior Project Architect in charge of design and production of the public amenity areas of Robson Square. This major downtown redevelopment, completed in 1979, is widely known as a North American landmark in architecture and urban design.

Barry was next recruited to Edmonton and became a Senior Associate with a large private practice. Here he was responsible for the design of four major office buildings in Edmonton and an international award winning high school in Sherwood Park.

In 1981 he opened his office in Edmonton and quickly earned national recognition and respect. Throughout its history, Barry Johns Architects Ltd. developed and sustained an international reputation as a progressive and uniquely innovative design office. Projects from schools to offices, community facilities, colleges and industrial buildings each had a fresh approach and a commitment to excellence. The firm received over 40 design awards from around the world and saw its work published and exhibited throughout North America, Britain, Japan and China. In 1992 it received the Governor General's Award for Architecture.

After 17 years as a small 10 - 12 person firm, a succession plan inspired a fascinating evolution. In 1998 Barry became a founding principal of Stantec Architecture Ltd. The amalgamation of Barry Johns Architects and two other practices with Stantec created the Architectural Division of this multi-disciplinary consulting firm.

During a three year period with Stantec, he was Partner in Charge of the Prince George Art Gallery, (*Canadian Architect* July 2001); a major office redevelopment for Telus Corporation in downtown Edmonton; the Clareview LRT Station in Edmonton; and the Information and Communications Technology Centre (ICT) at the University of Calgary, (*Canadian Architect* January 2002). This project was named

"2001 Building of the Year" by Alberta Construction Magazine.

Barry has now reconstituted his old firm and is an active design consultant to other architectural firms and to private clients. Barry Johns (Architecture) Ltd. is partnered with Gibbs Gage Architects on a major downtown office development in Calgary and several educational projects including a new art gallery and field house at the University of Lethbridge. The firm is also engaged in 2 major housing projects in Edmonton.

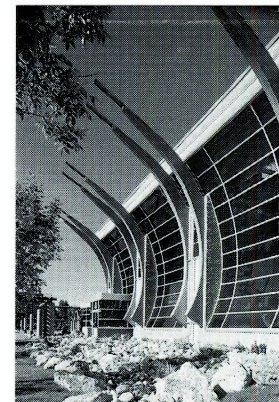
Active in civic and professional affairs, Barry has served on many councils, committees and design award juries. In 1994, he was elected a Fellow of the Royal Architectural Institute of Canada and in 1995, a Member of the Royal Canadian Academy of the Arts. This year he will receive an Honorary Fellowship in the American Institute of Architects College of Fellows. This prestigious honor is granted to "architects of esteemed character and distinguished achievements who are not U.S. citizens."

His teaching skills are widely acknowledged and he has contributed to the architecture programs at Dalhousie, the University of British Columbia, the University of Montreal, McGill University, and the University of Calgary. TUNS Press published a monograph on the work of his former firm in the series *Documents in Canadian Architecture* in July 2000.

Barry Johns (Architecture) Ltd can be contacted at [www.bjalstudio.ca](http://www.bjalstudio.ca).



2



3



dalhousie university  
**invitation to recruit**  
faculty of architecture



The Faculty of Architecture invites you to post positions suitable for architecture and planning work term students, summer students and new graduates. If you can offer challenging career related employment we want to help you to hire one of our students.

### The process for work term students

1. Employers forward their requirements including a deadline for applications to us.
2. Job advertisements are e-mailed to students during the academic term before each work term.
3. Students forward applications to employers before deadline date.
4. Employers contact students directly or through Career and Community Service office to arrange interviews and job offers.

### The process for graduates and summer students

1. Employers forward their requirements including a deadline for applications to us.
2. Job advertisements are posted on the Faculty Web Page and Lobby Notice Board.
3. Graduates and students forward applications to employers before deadline date.
4. Employers contact graduates and students directly to arrange interviews and job offers.

Employers can find more information about co-op work terms on the Faculty's web site at <[www.dal.ca/architecture](http://www.dal.ca/architecture)>.

### To advertise your position please tell us

Employer: \_\_\_\_\_  
Contact: \_\_\_\_\_  
Address: \_\_\_\_\_  
\_\_\_\_\_  
Phone: \_\_\_\_\_  
Fax: \_\_\_\_\_  
Email: \_\_\_\_\_  
Url: \_\_\_\_\_  
Application deadline: \_\_\_\_\_

### Work term students *(Please check appropriate box)*

- We are interested in 4th term architecture students who require a minimum of 500 hours of work in 12 or more weeks and are available to work from August to December.
- We are interested in 8th term architecture students who require a minimum of 1000 hours of work in 24 or more weeks and are available to work from January to August.
- We are interested in 3rd term Master of Urban and Rural Planning students who require a minimum of 14 weeks of experience and are available to work from May to August.

### Summer students and graduates

- We are interested in Bachelor of Environmental Planning students who are available to work from May to August.
- We are interested in Master of Architecture graduates for full-time employment.
- We are interested in Master of Urban and Rural Planning graduates for full-time employment.
- We are interested in Bachelor of Environmental Design Studies graduates for full-time employment.
- We are interested in Bachelor of Environmental Planning graduates for full-time employment.
- Reuse our most recent advertisement on file with the Faculty office.
- A job description is attached, including, (i) a description of the practice and its current work, (ii) specific skills required of the student, (iii) salary.

*Please indicate the items you would like an applicant to provide.*

- |  |  |
|--|--|
| <input type="checkbox"/> Web page address    | <input type="checkbox"/> Resume          |
| <input type="checkbox"/> Portfolio           | <input type="checkbox"/> Cover Letter    |
| <input type="checkbox"/> Grades              | <input type="checkbox"/> Phone interview |
| <input type="checkbox"/> In-person interview | <input type="checkbox"/> References      |

*Please return this form to:*

Paula Costello, tel: 902-494-6201, fax: 902-423-6672,  
e-mail: [paula.costello@dal.ca](mailto:paula.costello@dal.ca)



Faculty of Architecture  
Box 1000, Halifax, Nova Scotia  
Canada B3J 2X4  
[www.dal.ca/architecture](http://www.dal.ca/architecture)