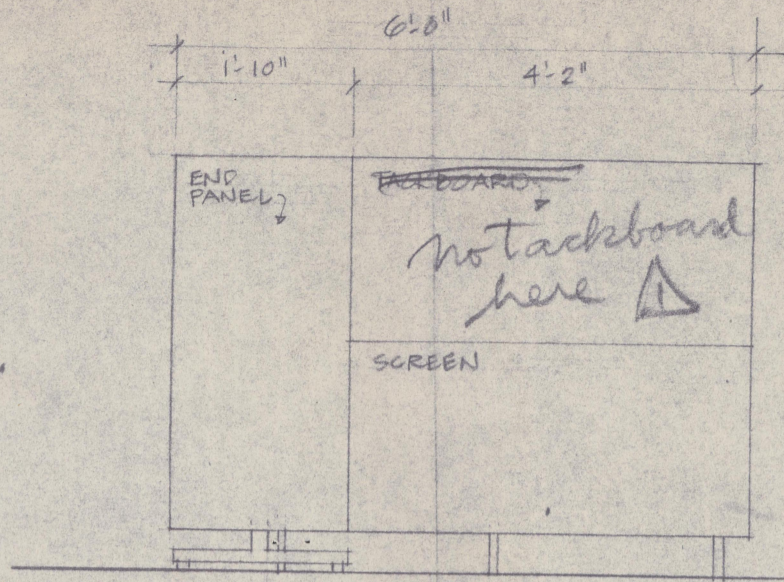
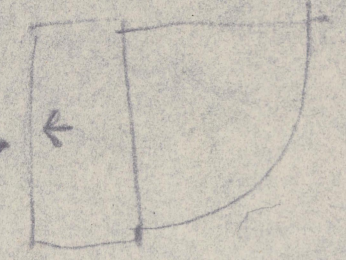


ELEVATION A 1/2" = 1'-0"

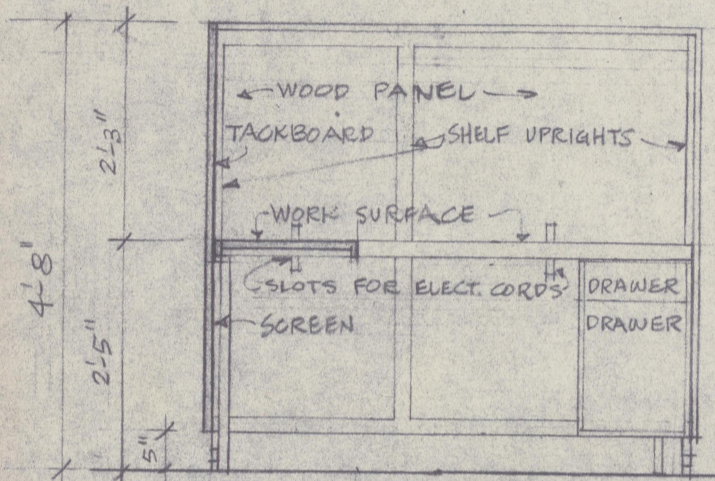


ELEVATION B 1/2" = 1'-0"

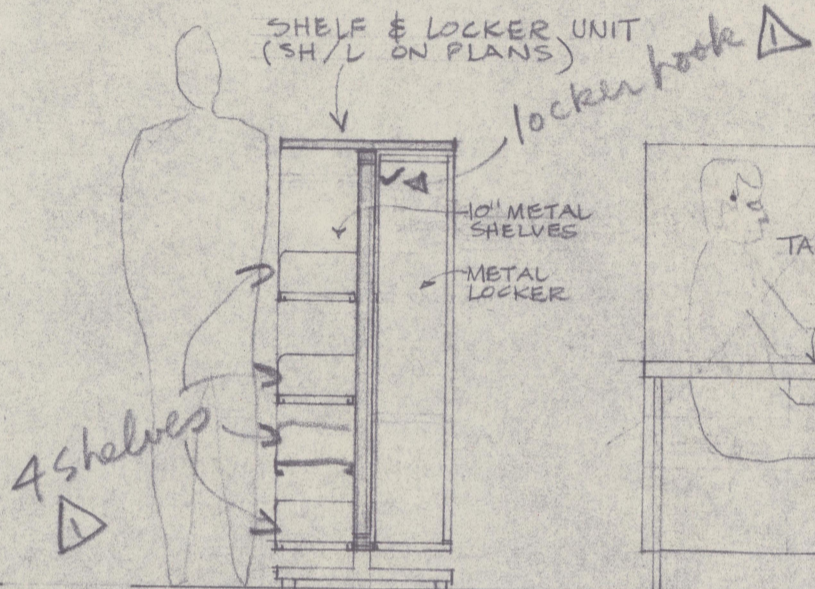
locker:  
3 pronged  
hook  
June 4/68



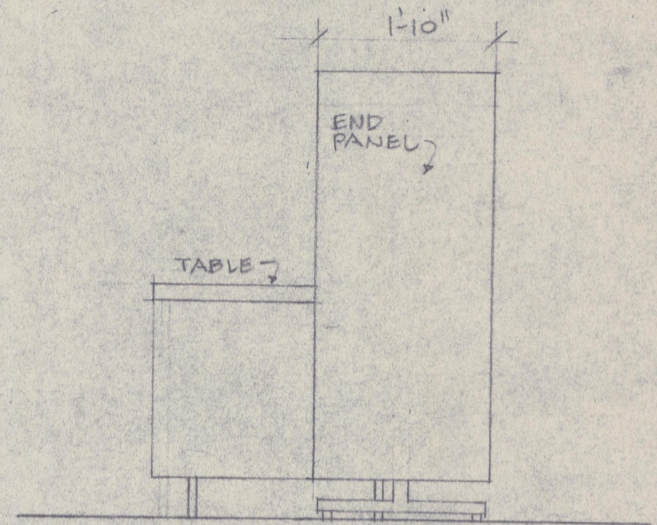
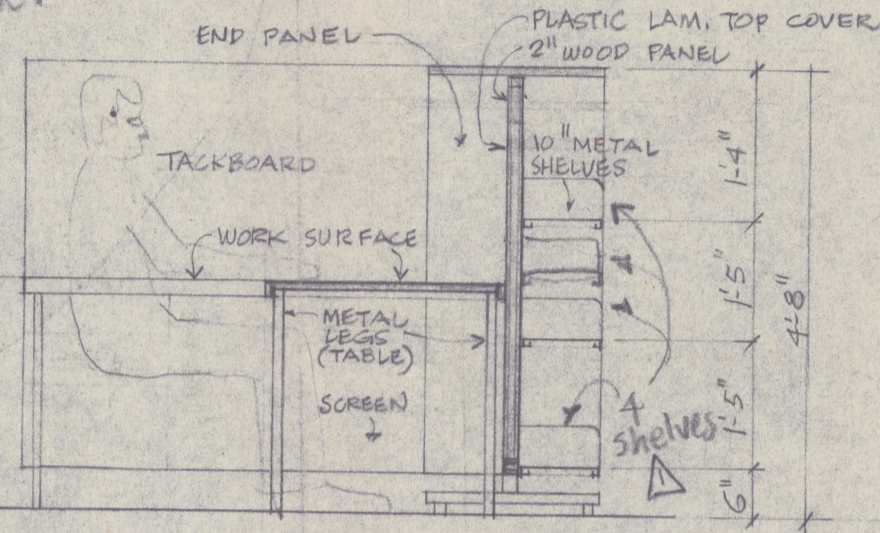
Telephone: special panel on metal desks for phone.



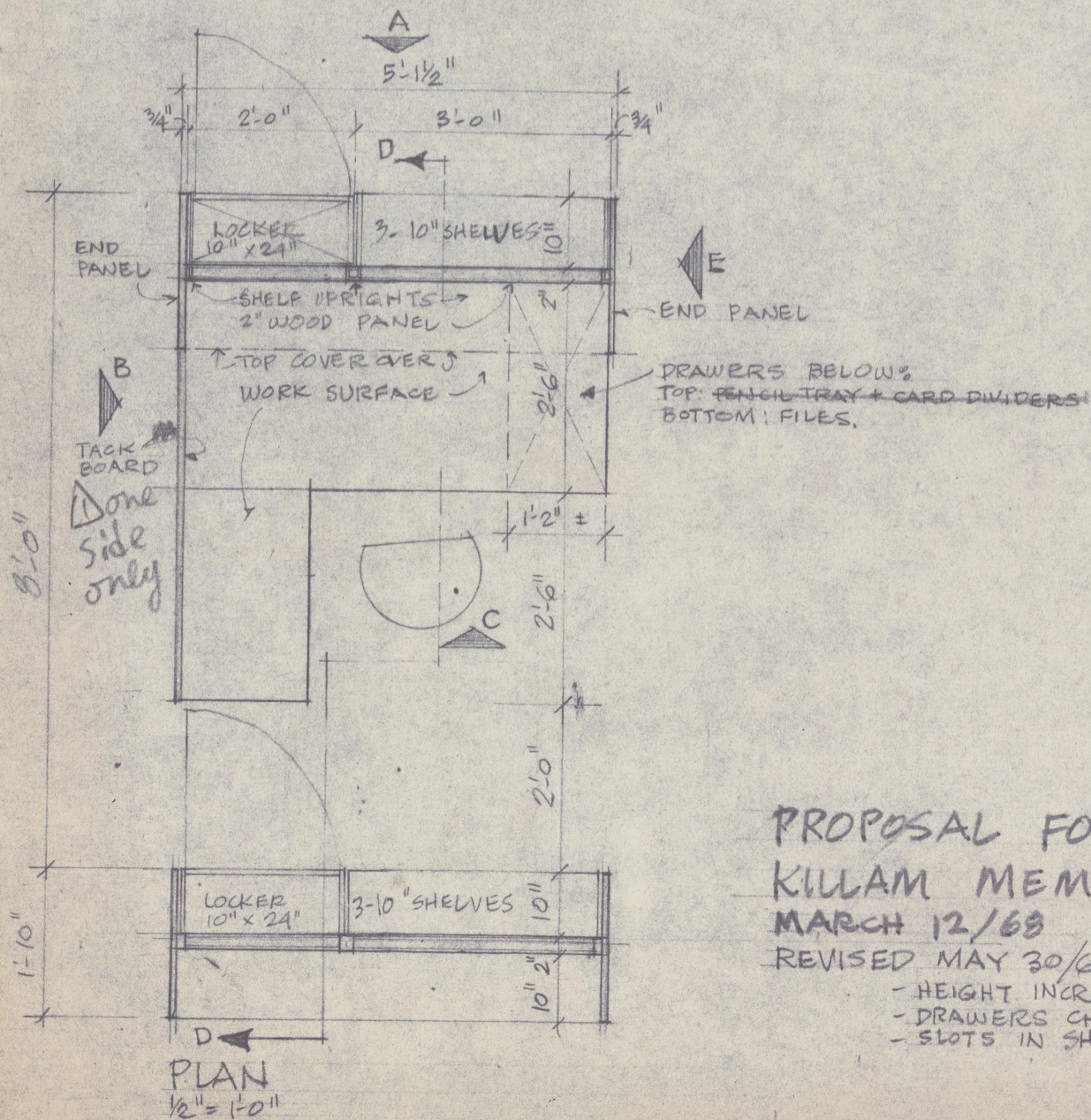
ELEVATION C 1/2" = 1'-0"



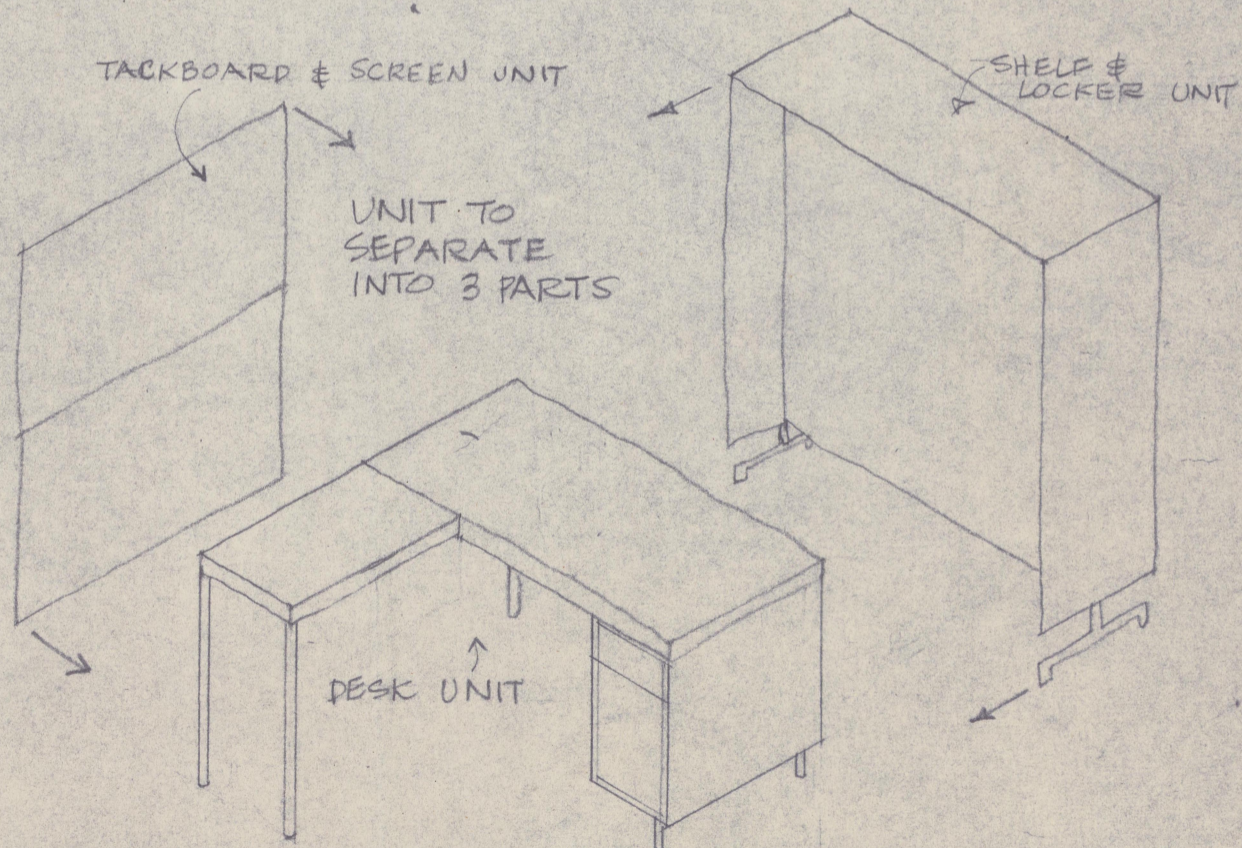
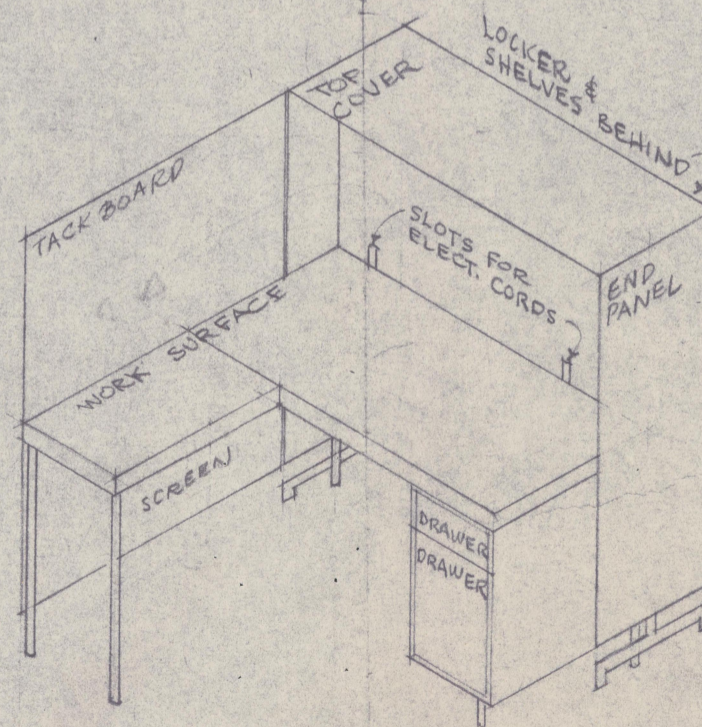
SECTION D-D - SCALE: 1/2" = 1'-0"



ELEVATION E 1/2" = 1'-0"

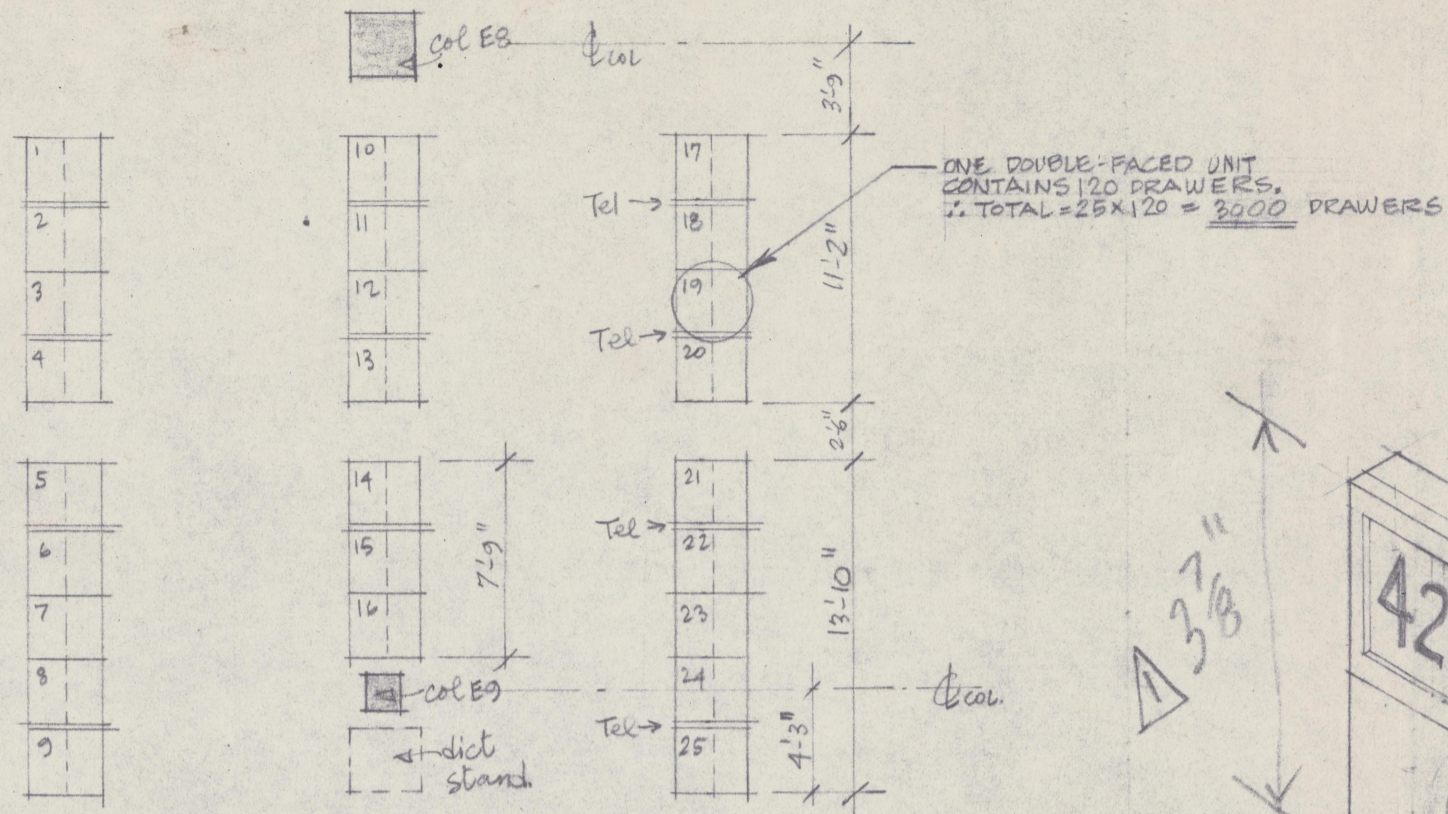


PLAN 1/2" = 1'-0"

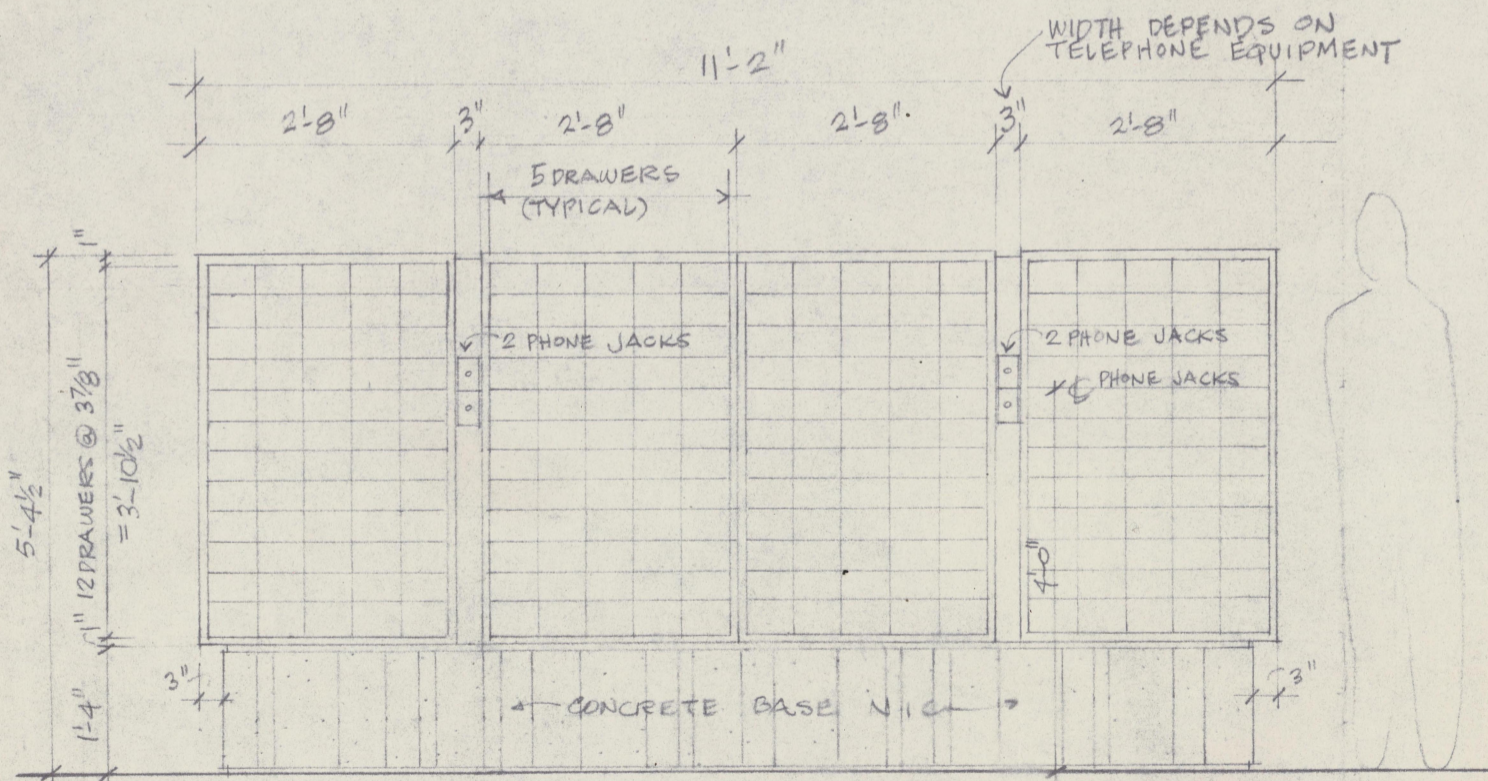
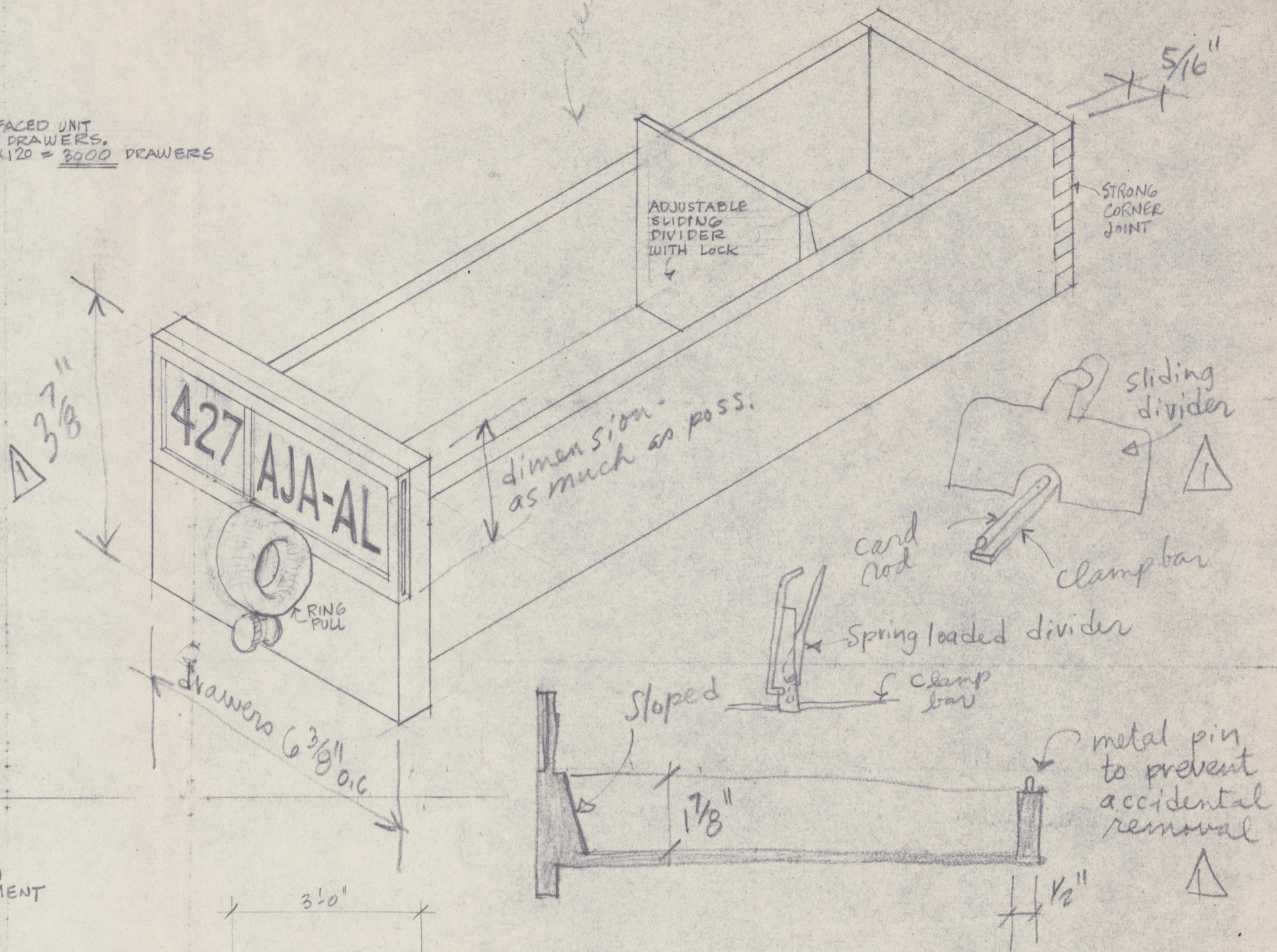


PROPOSAL FOR CATALOGER'S & BIBLIOGRAPHERS WORK UNIT (C.B. UNIT ON PLANS)  
 KILLAM MEMORIAL LIBRARY - DALHOUSIE UNIVERSITY  
 MARCH 12/68 SCALE: 1/2" = 1'-0" Leslie R. Fairn & Associates.  
 REVISED MAY 30/68 AS REQUESTED BY LIBRARIAN AS FOLLOWS:  
 - HEIGHT INCREASED 4" TO 4'-8"  
 - DRAWERS CHANGED FROM SIDE TO FRONT  
 - SLOTS IN SH/L UNIT FOR ELECT CORDS.

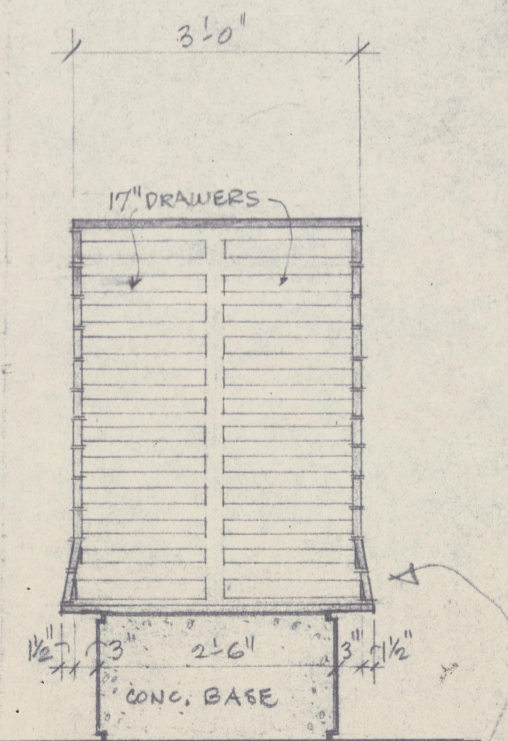
F-100  
 Sept 13/68



PLAN LAYOUT OF UNITS  
SCALE: 1/2" = 1'-0"



ELEVATION (TYPICAL)  
1/2" = 1'-0"

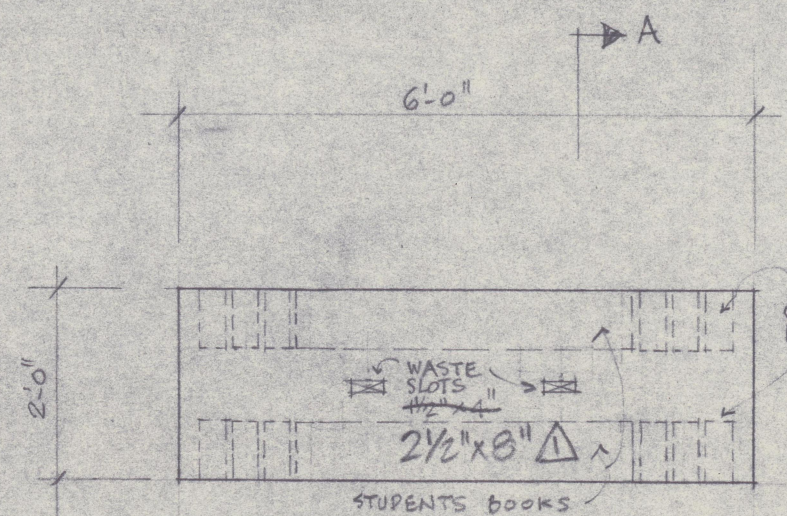


SECTION  
1/2" = 1'-0"

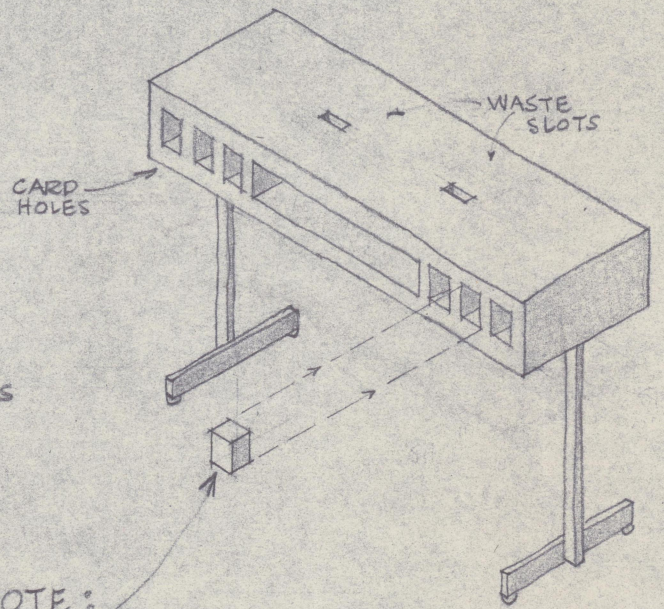
KILLAM MEMORIAL LIBRARY  
CARD CATALOGUE UNITS.  
SCALE: 1/2" = 1'-0" MAY 15/68 JOB 290  
LESLIE R. FAIRN & ASSOCIATES  
REVISED MAY 24/68 AS REQUESTED BY LIBRARIAN

F-101

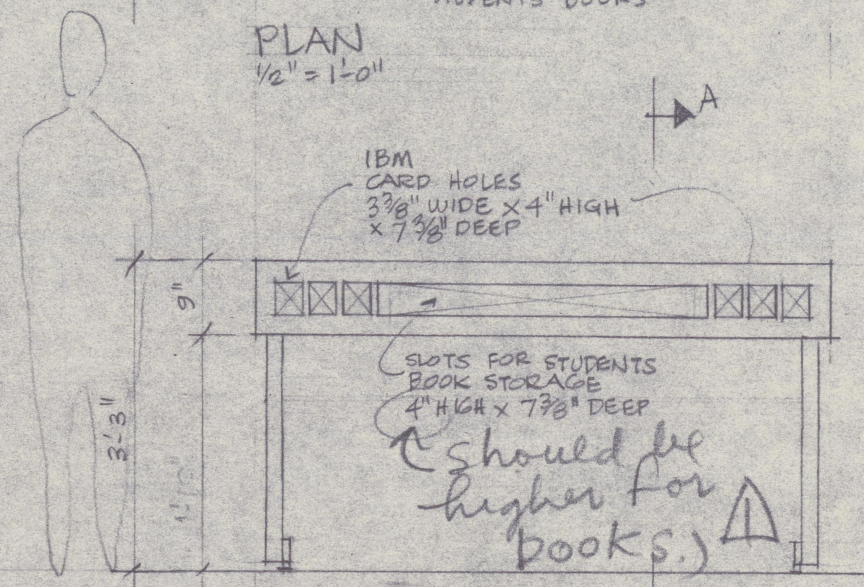
Slots 1/2" high.



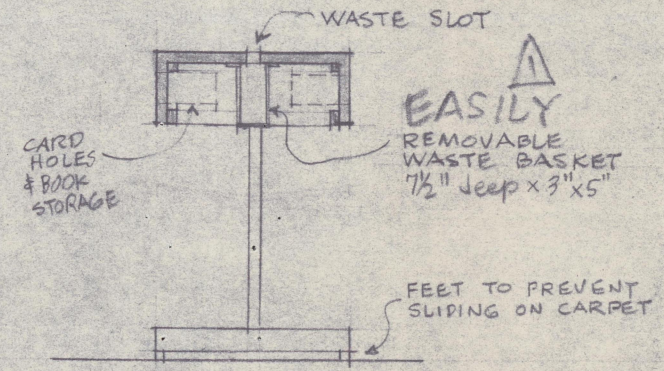
PLAN  
1/2" = 1'-0"



NOTE:  
PROVIDE REMOVABLE WOOD BLOCKS TO EACH CARD HOLE 3 3/8" x 4" x REQ'D DEPTH TO TAKE MCBEE CARDS



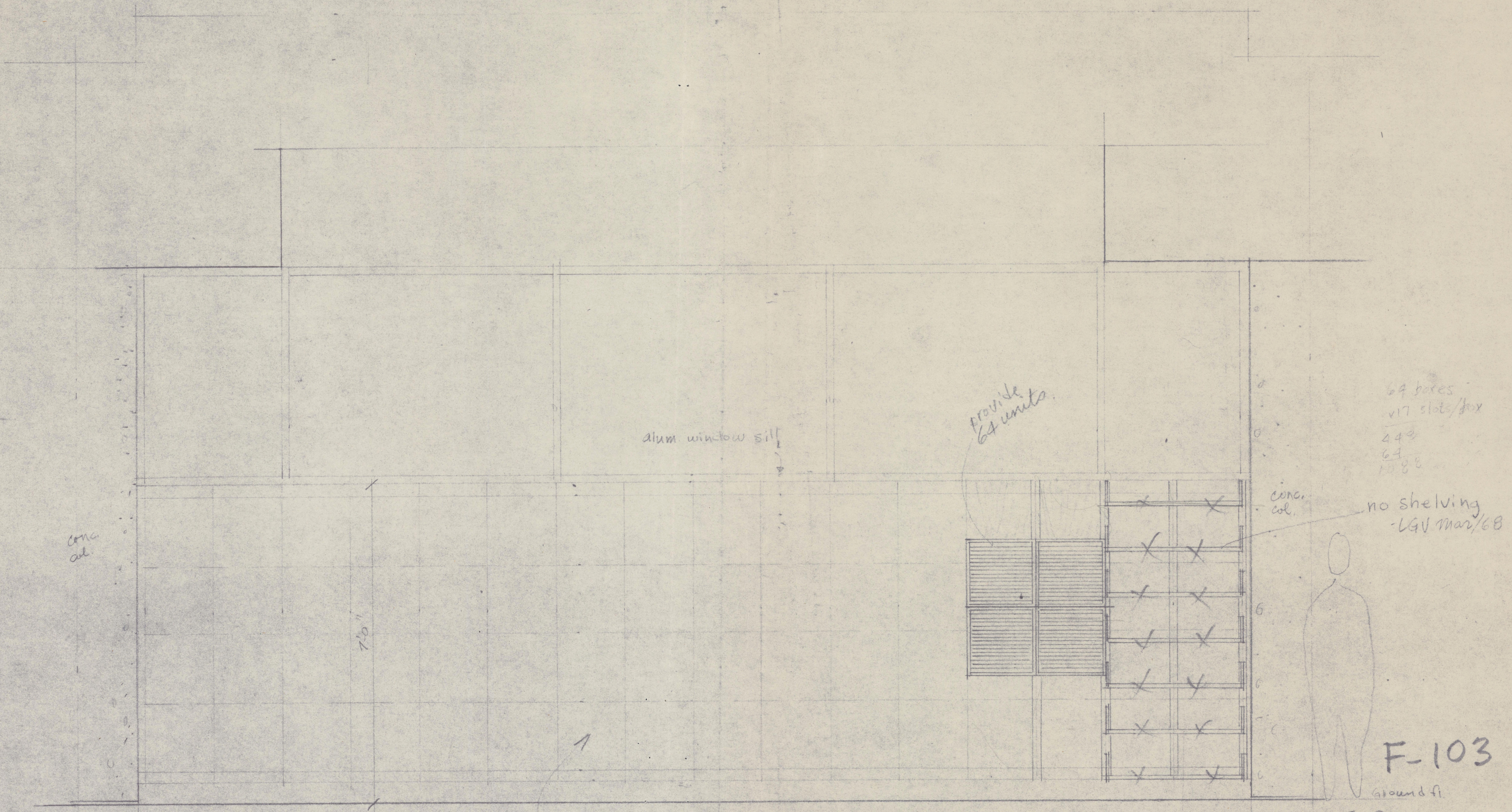
ELEVATION  
1/2" = 1'-0"



SECTION A-A  
1/2" = 1'-0"

KILLAM MEMORIAL LIBRARY  
CONSULTATION TABLE  
SCALE: 1/2" = 1'-0" MAY 13/68 JOB 280  
LESLIE R. FAIRN & ASSOCIATES  
Revised May 24/68 as requested by librarian

F-102  
Sept 18/68



alum. window sill

provide 64 units

64 boxes  
 v17 slot/box  
 448  
 64  
 1088

no shelving  
 -LGV Mar/68

F-103

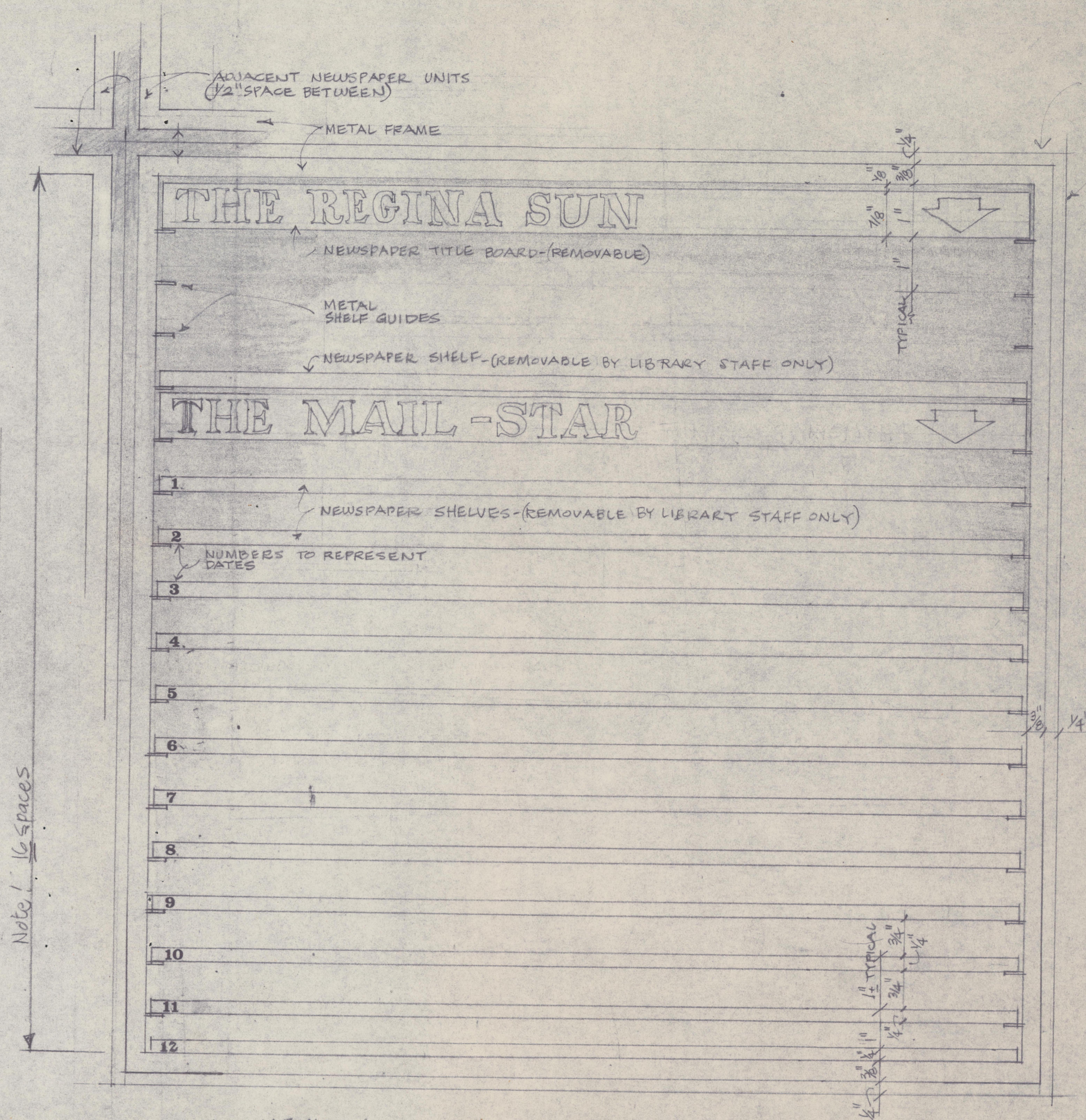
ground fl.

consider decorative background  
 of newspaper headline blow-ups.

ELEVATION OF WALL FOR  
 NEWSPAPER STORAGE UNITS  
 MAY 13/68

conc.  
 col.

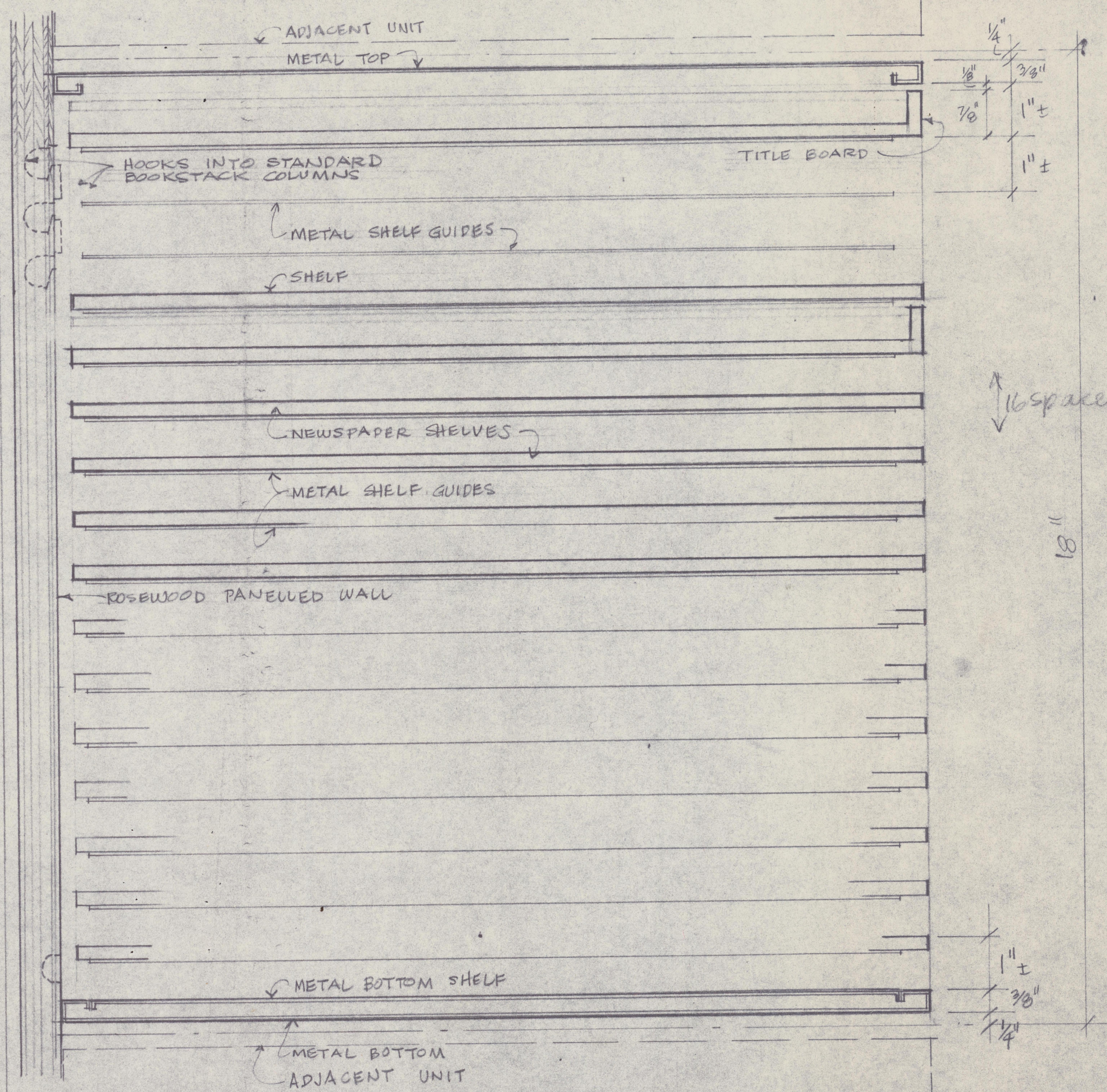
7'6"



Note: 16 spaces

KILLAM MEMORIAL LIBRARY - NEWSPAPER STORAGE UNIT - FRONT VIEW  
 MARCH 28/68 1/2 full size  
 Revised May 13/68  
 F-104

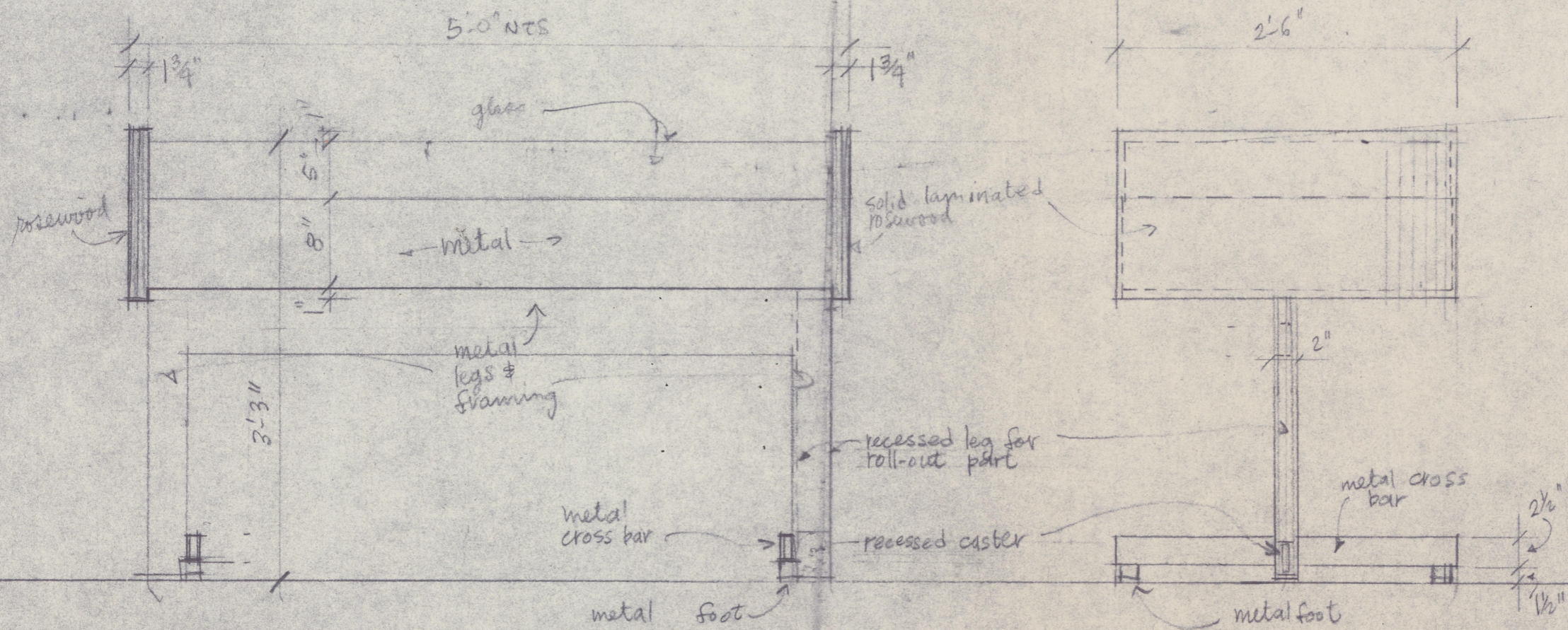
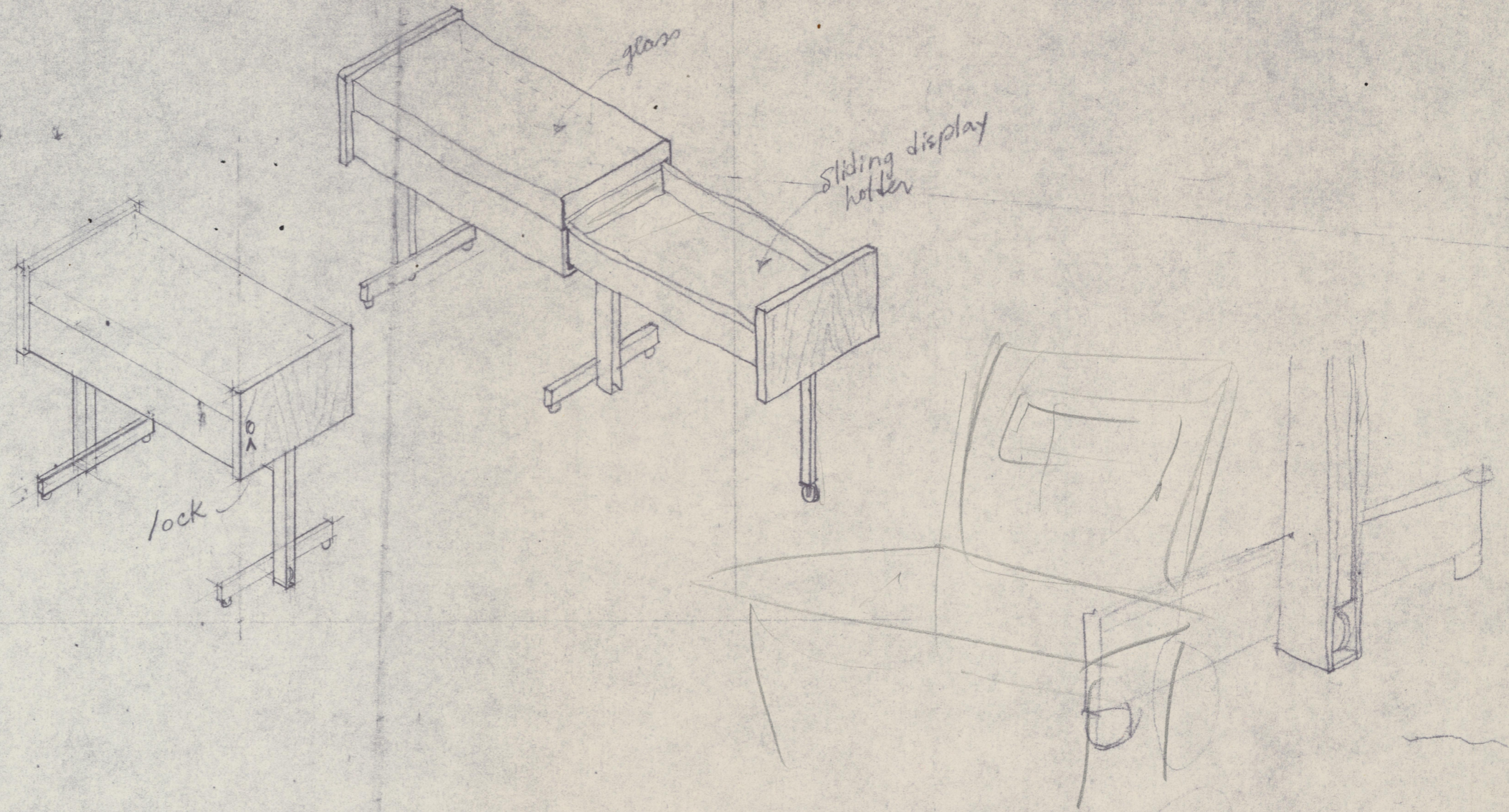
14'  $\triangle$   
~~13'~~  
NTS



# NEWSPAPER STORAGE UNIT - SECTION

1/2 Full Size MARCH 28/68  
Revised May 13/68

F-105  
 $\triangle$  Sept 18

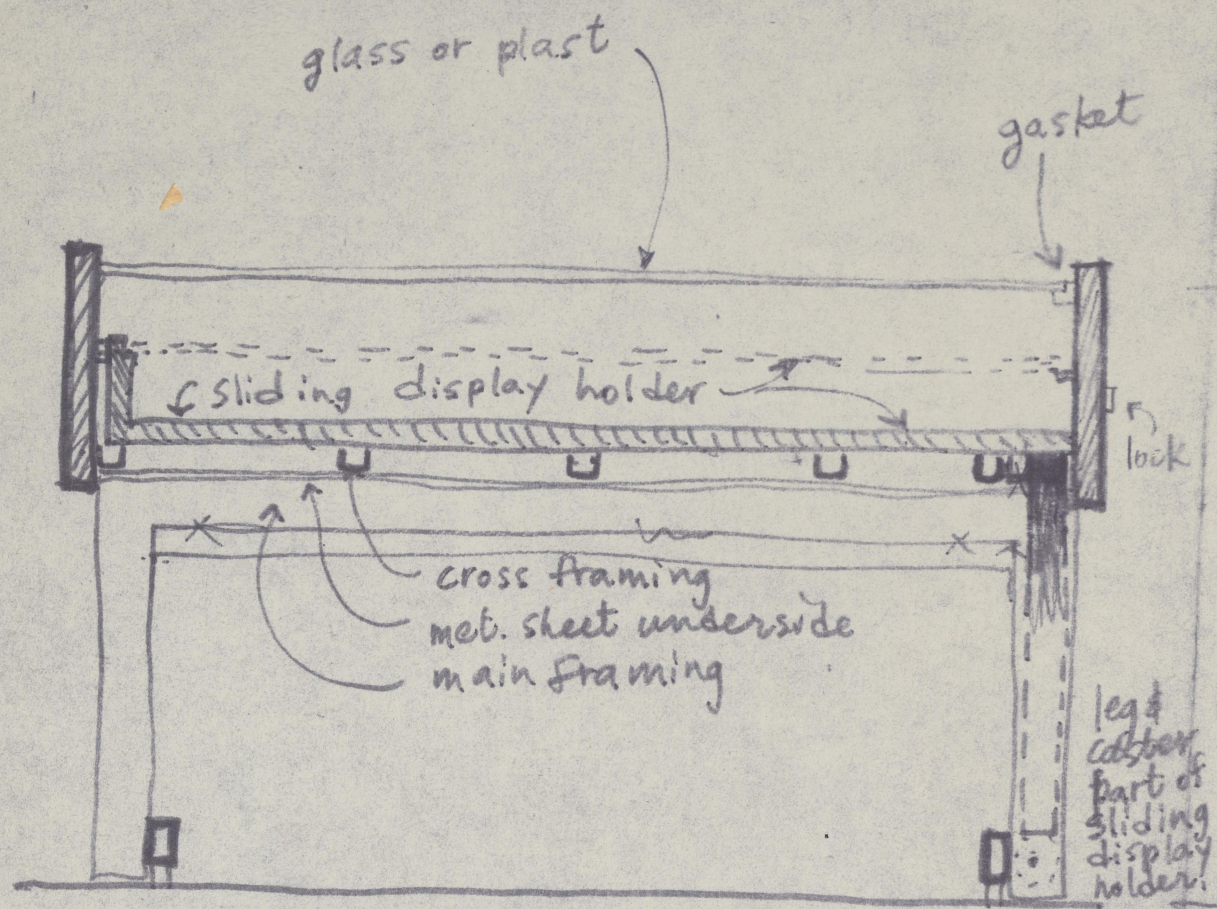


Elevation  
1" = 1'-0"

Elevation  
1" = 1'-0"

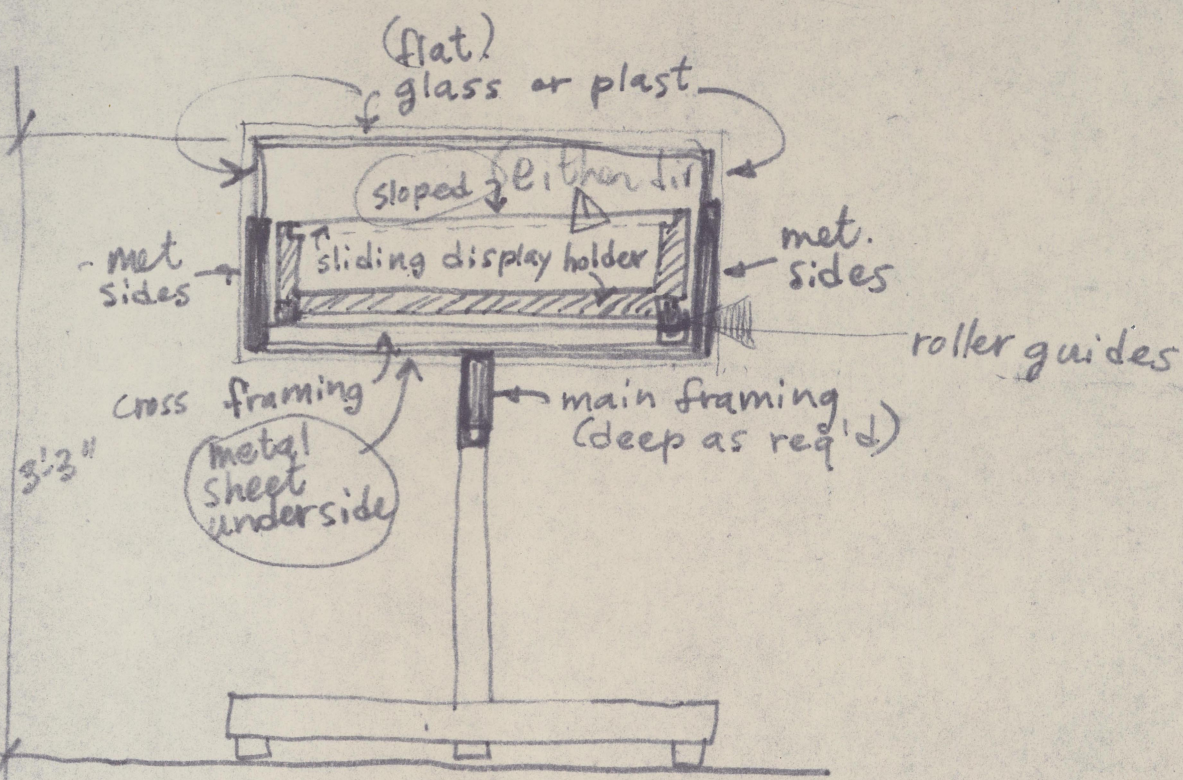
Proposal for Display Case  
Killam Memorial Library,  
Dalhousie U.  
Apr 9/68  
Revised May 13/68

F-106



Section  
1" = 1'-0"

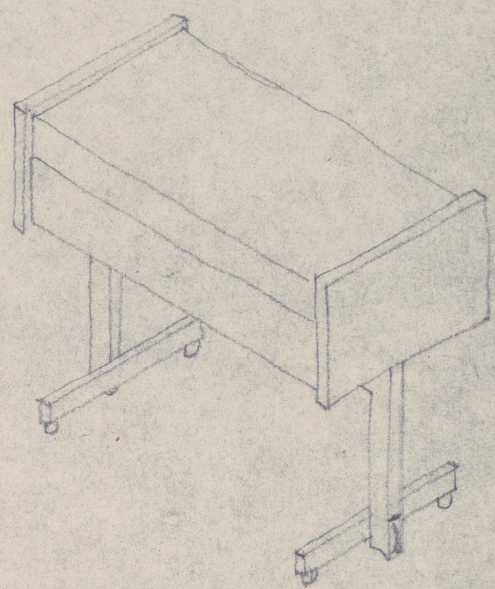
- △ 4 ways:
- ① Flat
  - ② Sloped West
  - ③ Sloped East
  - ④ Deep.



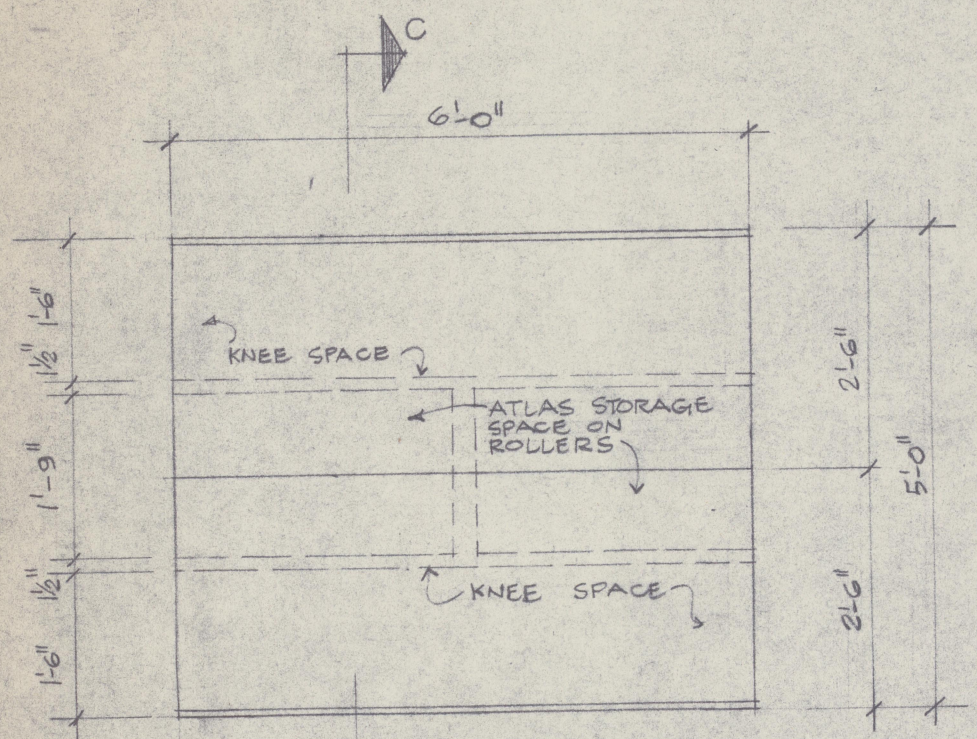
Section  
1" = 1'-0"

Proposal for Display Case  
Killam Memorial Library  
Dalhousie U.  
Apr 9/68

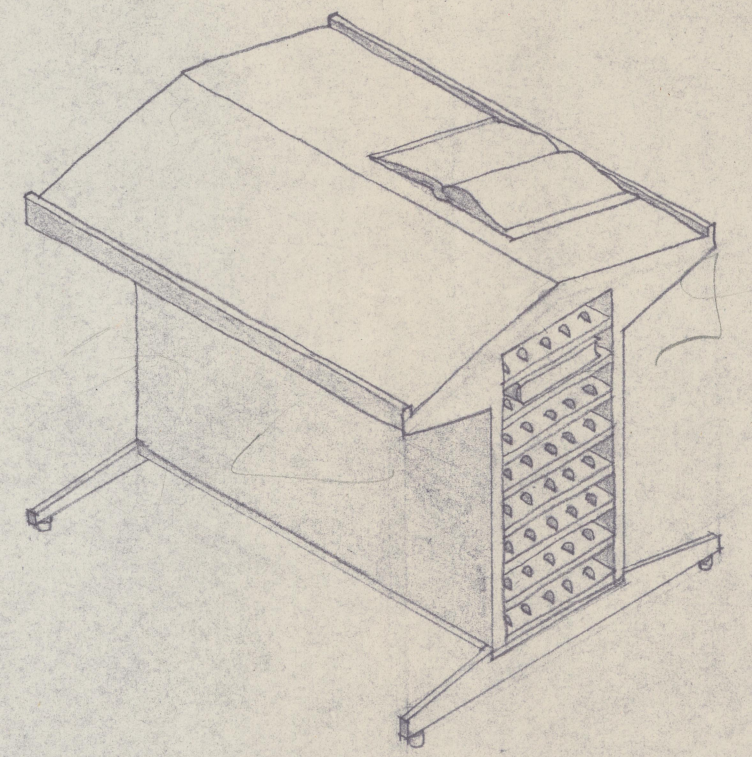
F-107  
△ Sept 13



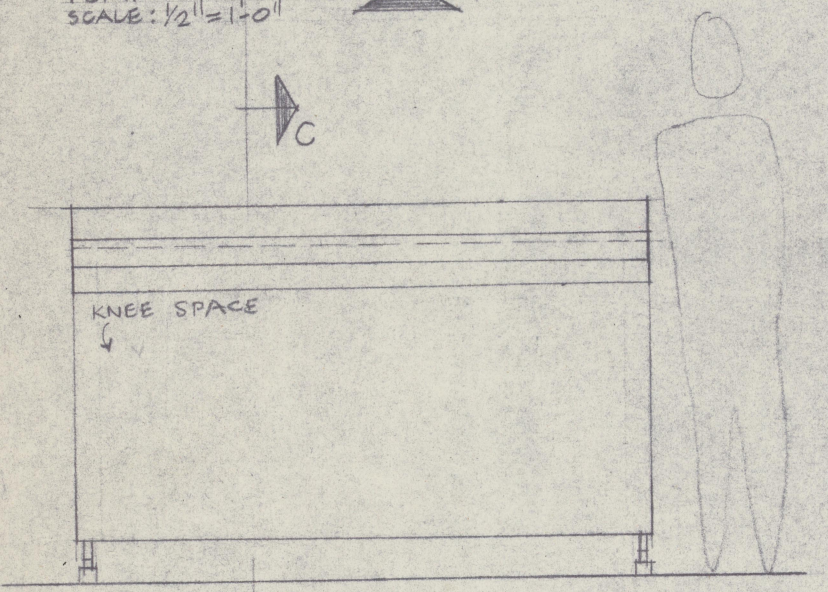




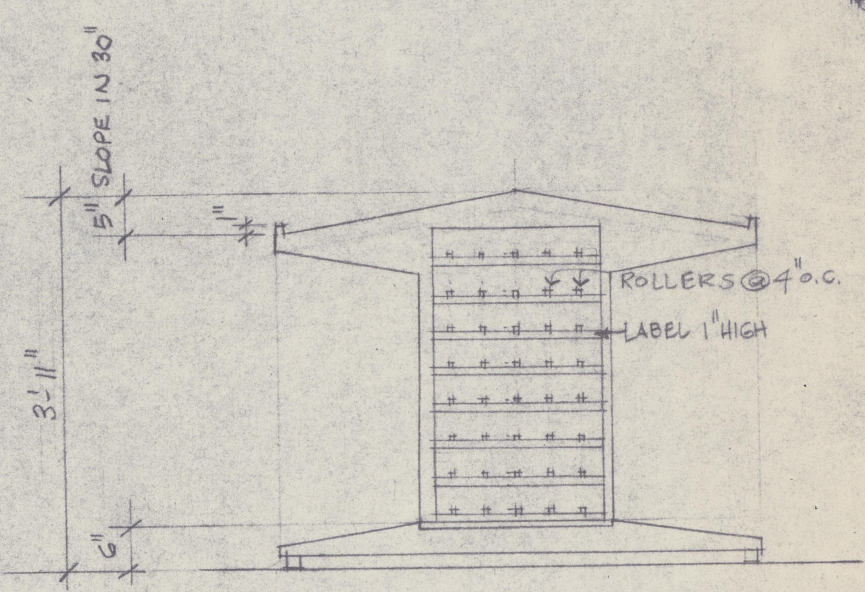
PLAN  
SCALE: 1/2" = 1'-0"



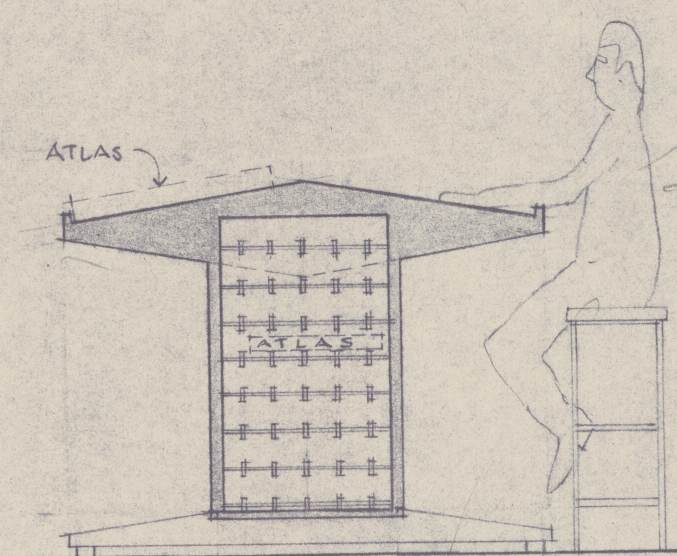
KILLAM MEMORIAL LIBRARY  
ATLAS STAND  
SCALE: 1/2" = 1'-0" MAY 12/68 JOB 280  
LESLIE R. FAIRN & ASSOCIATES  
Revised May 24/68 as requested by Librarian



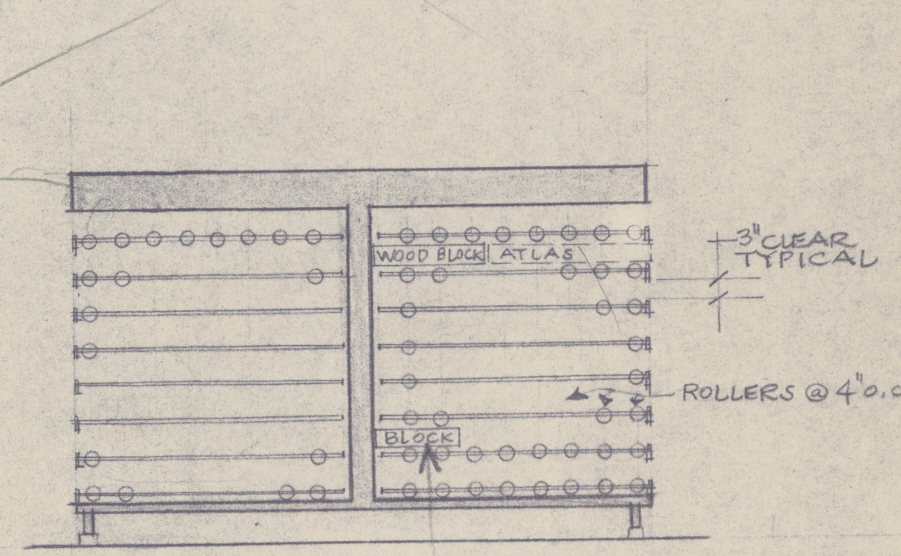
VIEW A  
SCALE: 1/2" = 1'-0"



VIEW B  
SCALE: 1/2" = 1'-0"



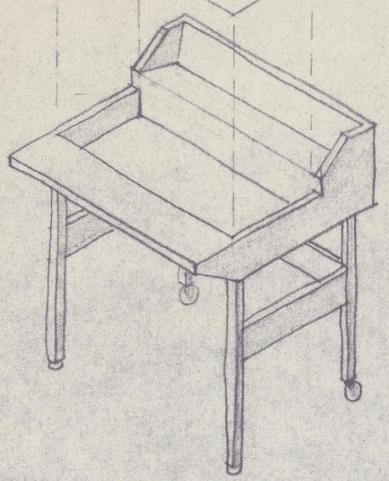
SECTION C-C  
SCALE: 1/2" = 1'-0"



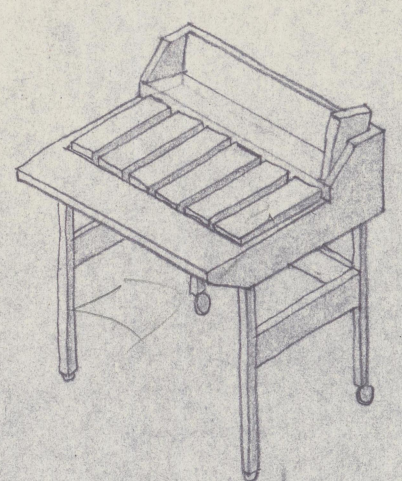
SECTION D-D  
SCALE: 1/2" = 1'-0"

F-108A sept 18  
Δ 6" Standard

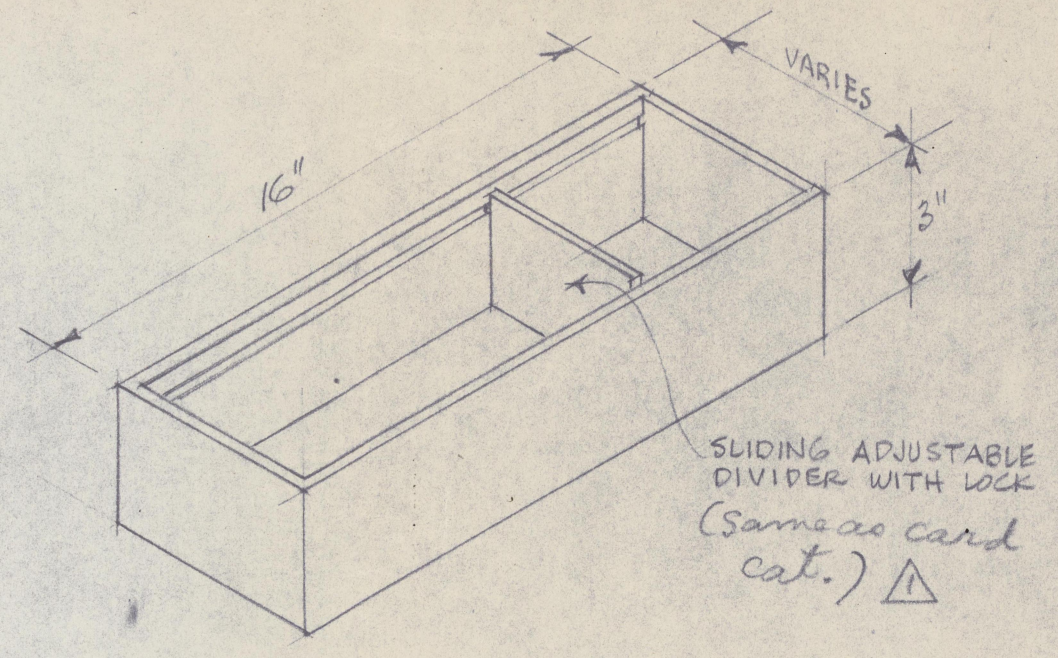
Provide 4 boxes (for whole job)  
 34" x 16 1/4" x 3" for filling in to  
 use as flat tables



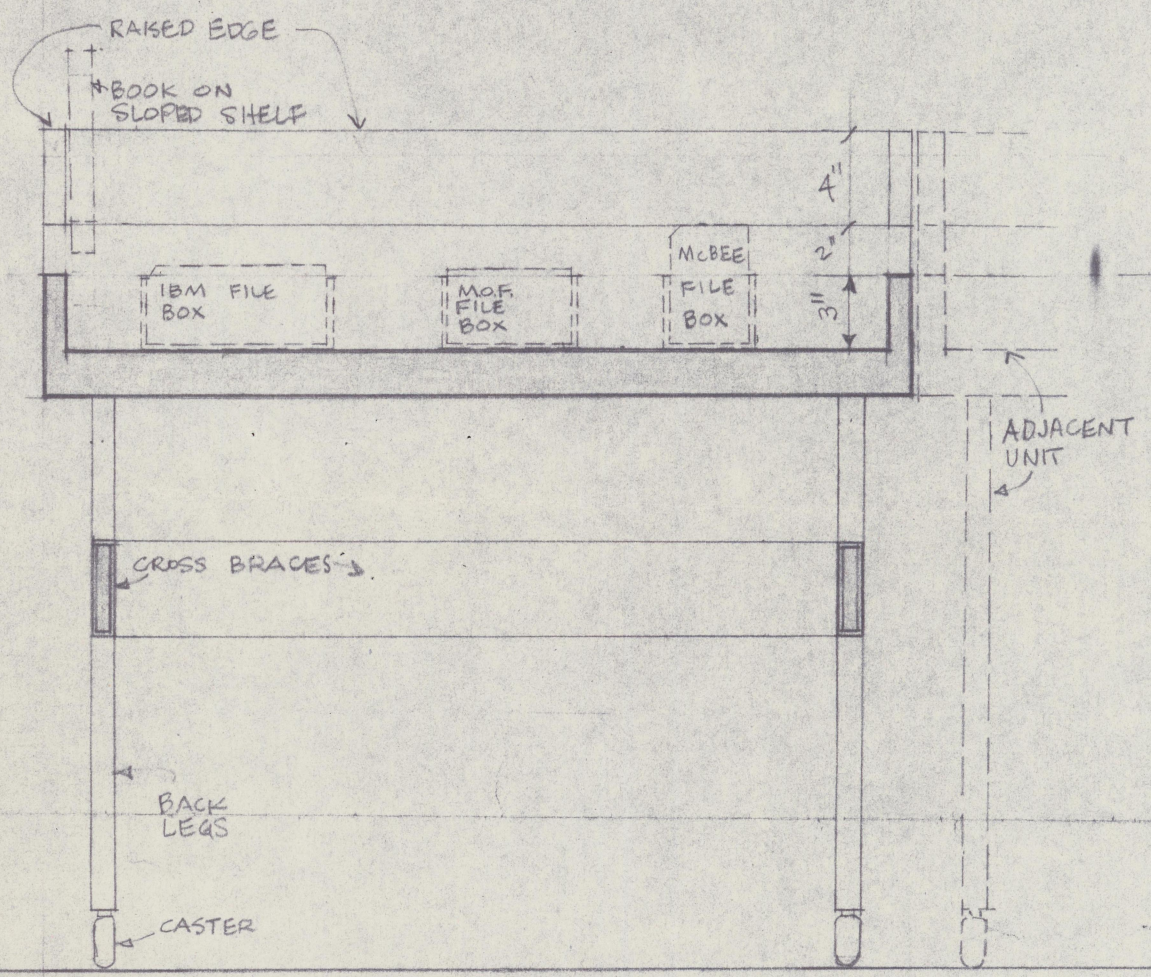
EMPTY FILE TUB



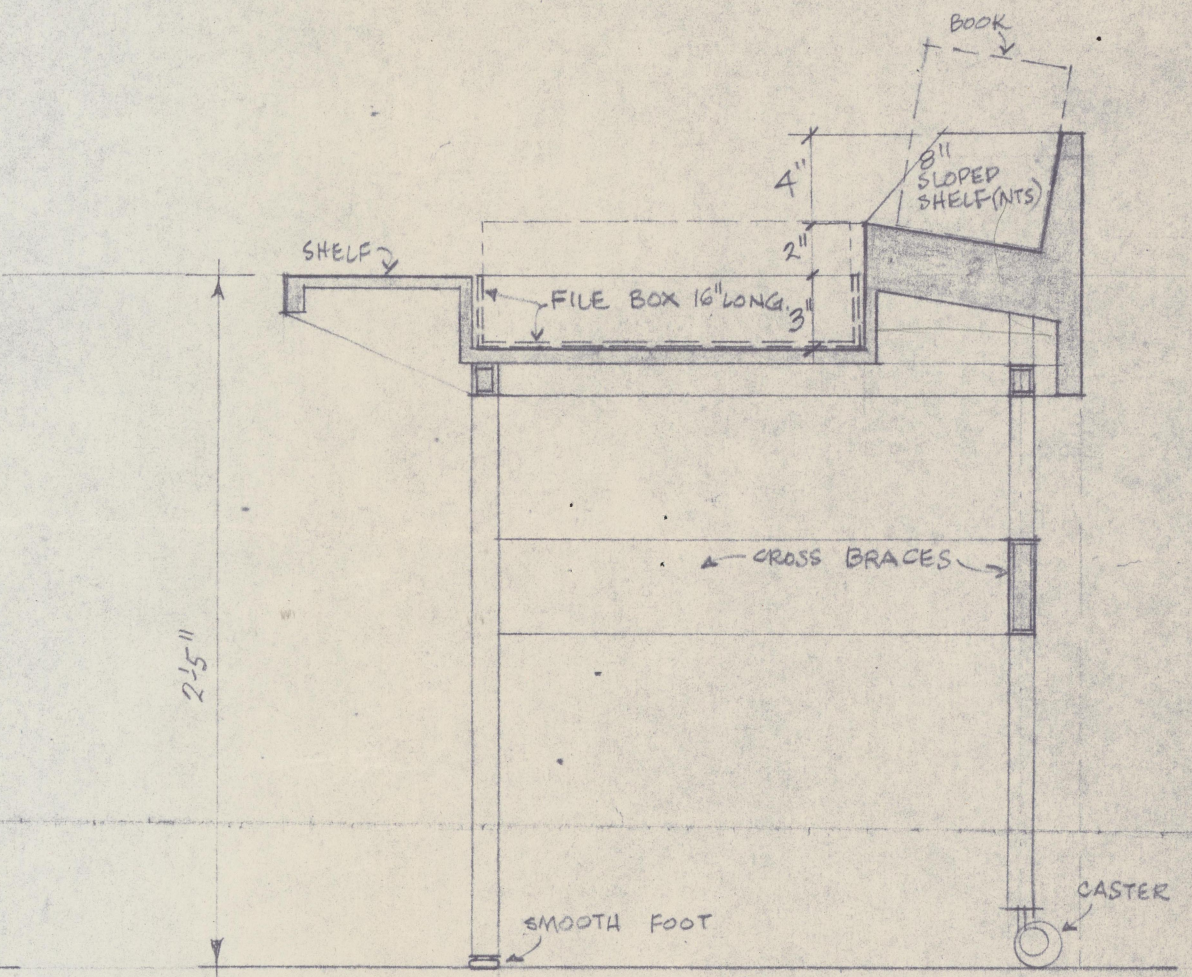
FILE TUB WITH  
 FILE BOXES



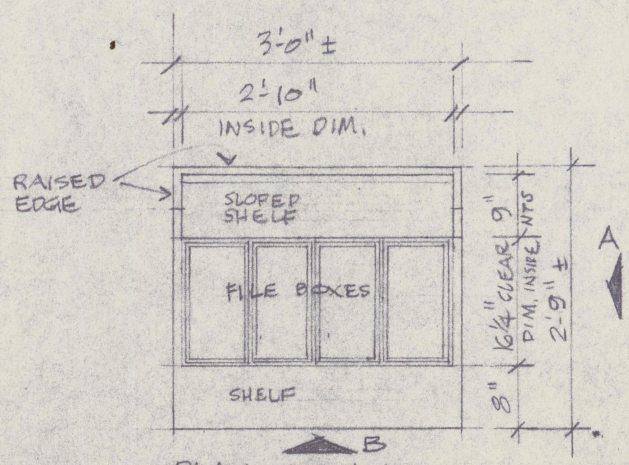
TYPICAL FILE BOX



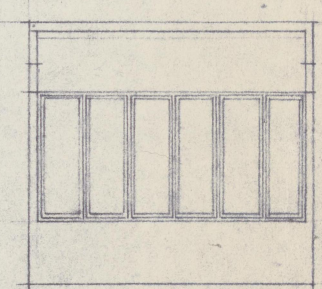
SECTION X-X  
 1/2" = 1'-0"



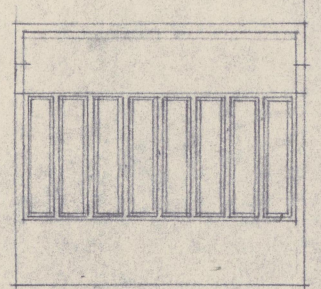
SECTION Y-Y  
 1/2" = 1'-0"



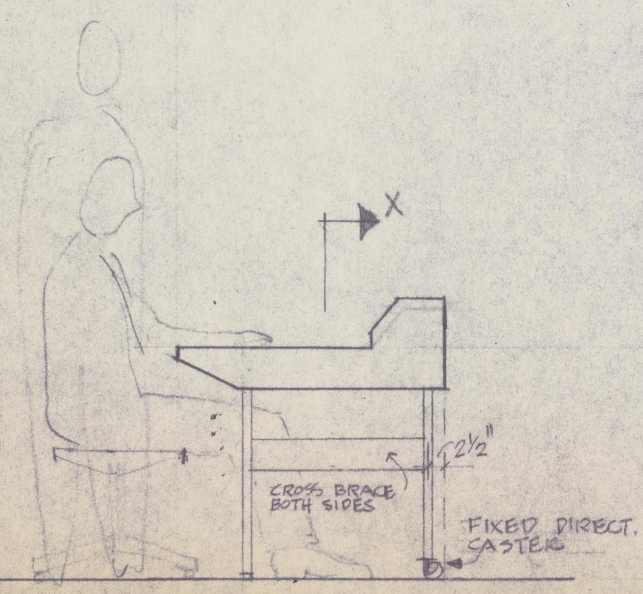
PLAN 1/2" = 1'-0"  
 IBM CARDS - 4 BOXES



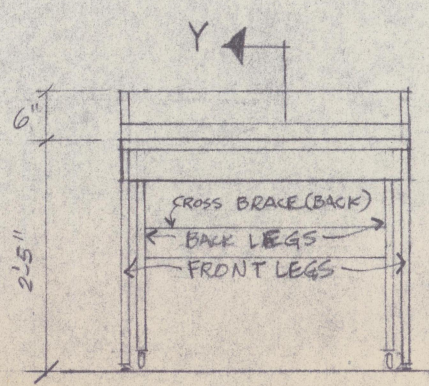
PLAN 1/2" = 1'-0"  
 MULTIPLE ORDER FORMS - 6 BOXES



PLAN 1/2" = 1'-0"  
 MCBEE CARDS - 8 BOXES



VIEW A 1/2" = 1'-0"

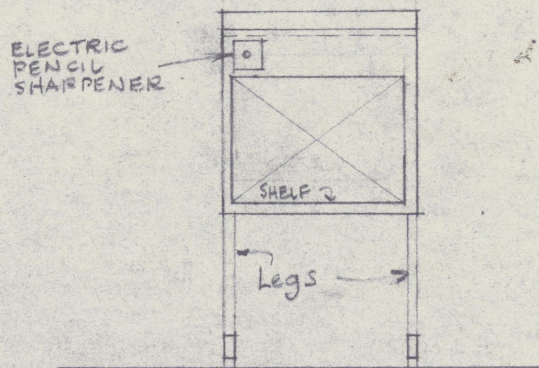
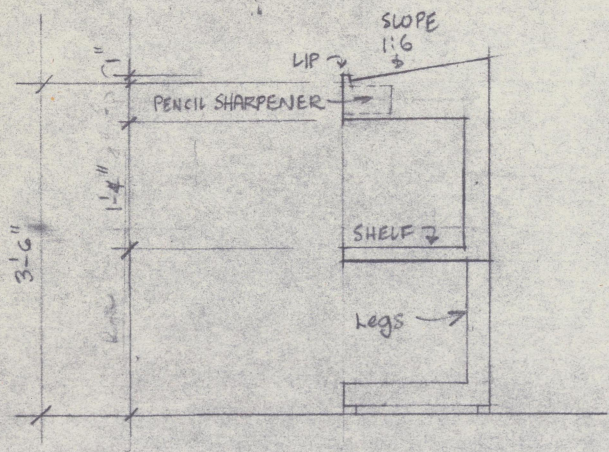
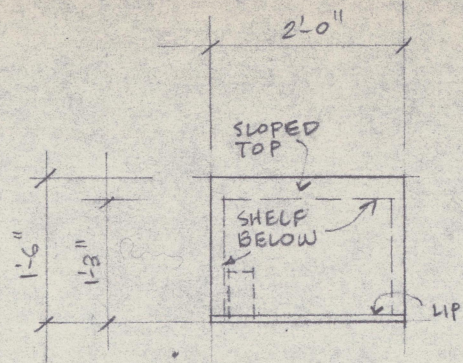


VIEW B 1/2" = 1'-0"

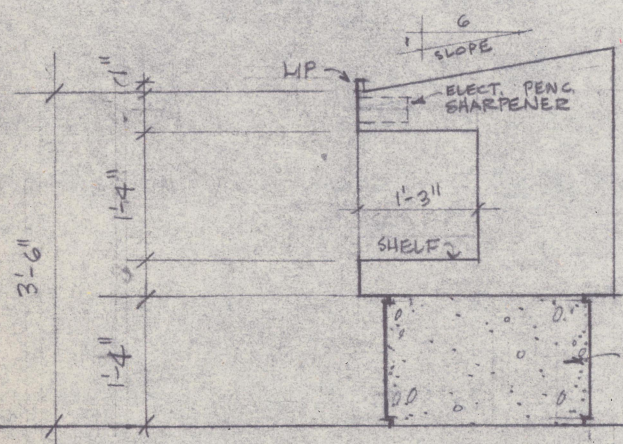
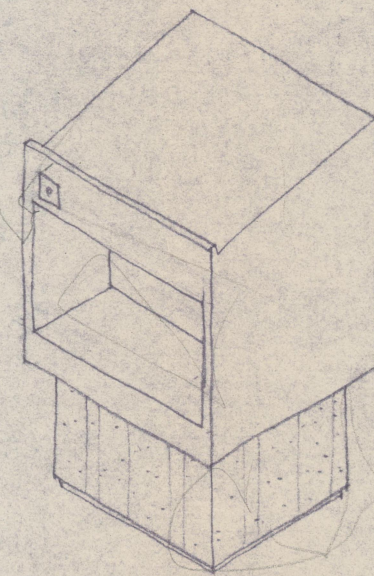
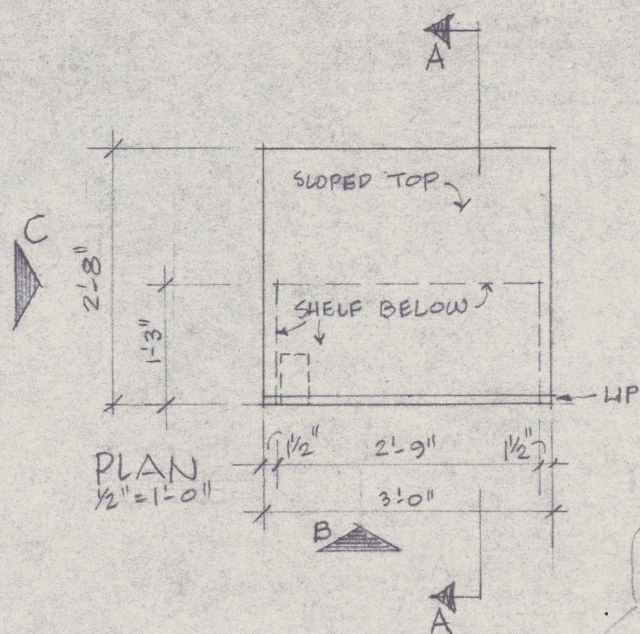
KILHAM MEMORIAL LIBRARY - JOB 290  
 PROPOSAL FOR FILE TUBS  
 SCALE: AS SHOWN  
 MAY 5/68 - Revised May 15/68  
 Leslie R. Fair & Associates

F-109  
 Sept 18

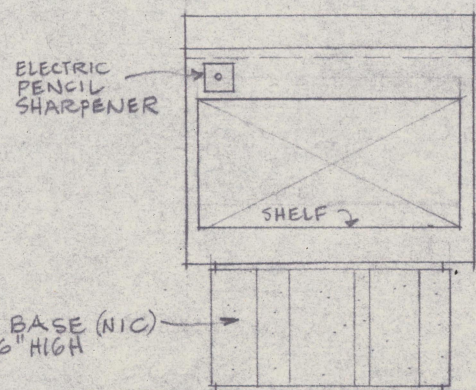
each tub to be supplied with  
 a full set of all 3 types of boxes.



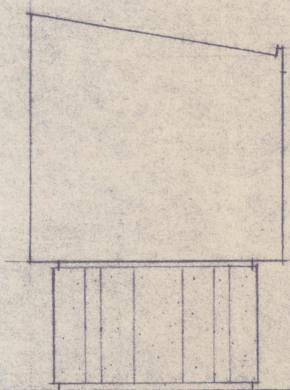
KILLAM MEMORIAL LIBRARY  
 DICTIONARY STAND - TYPICAL  
 SCALE: 1/2" = 1'-0" MAY 13/68 JOB 280  
 LESLIE R. FAIRN & ASSOC



SECTION A-A  
 SCALE: 1/2" = 1'-0"



VIEW B  
 1/2" = 1'-0"



VIEW C  
 1/2" = 1'-0"

KILLAM MEMORIAL LIBRARY  
 DICTIONARY STAND AT CARD CATS.  
 SCALE: 1/2" = 1'-0" MAY 13/68 JOB 280  
 LESLIE R. FAIRN & ASSOC.  
 Revised May 24/68 as requested by librarian

F-110