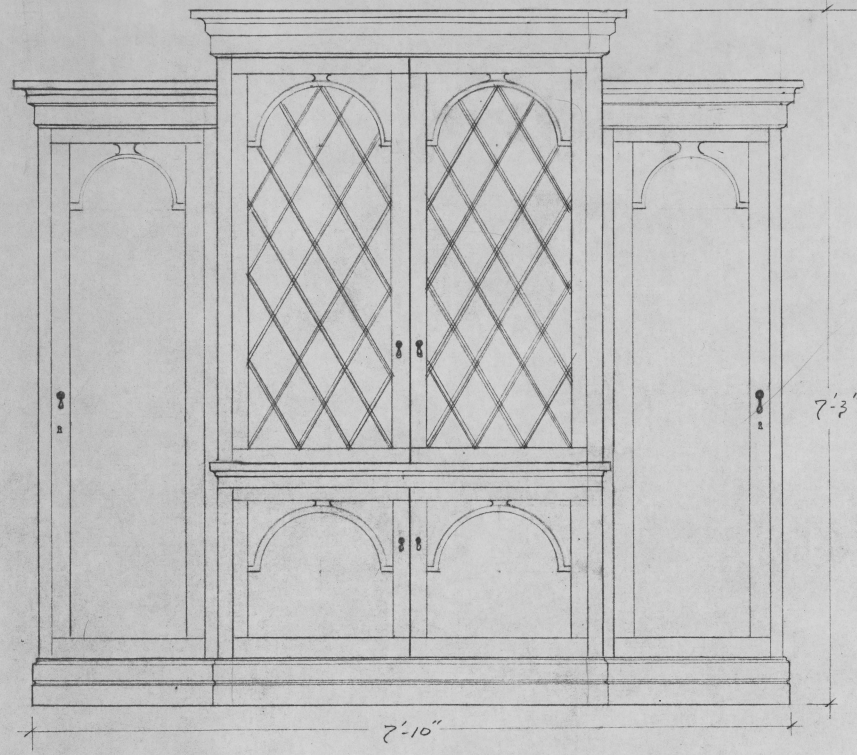
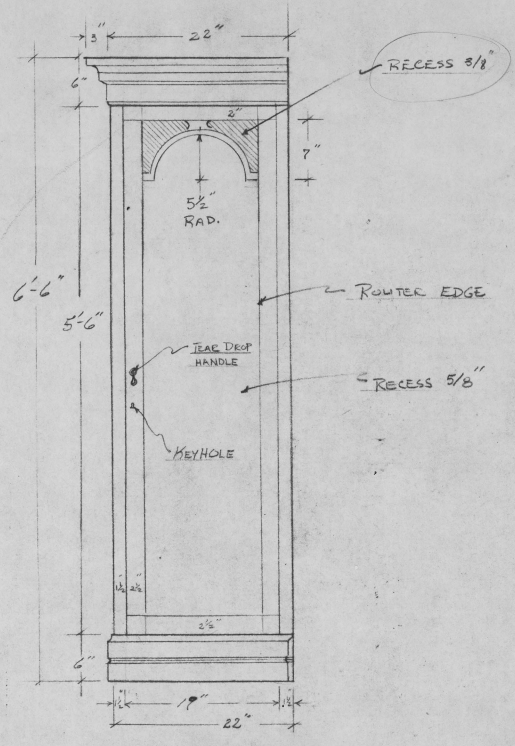


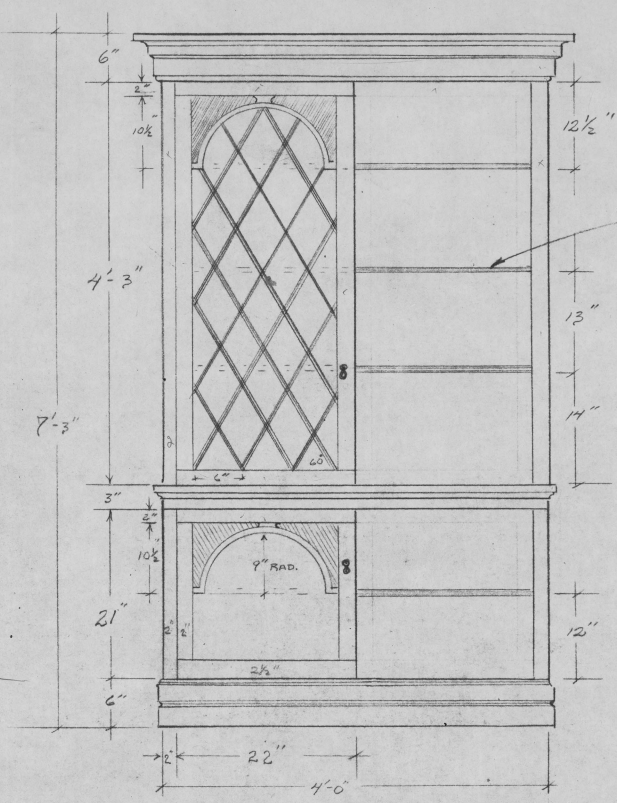
"MASS APPEAL"		
NEPTUNE THEATRE, HALIFAX		
DIRECTOR	LARRY LILLO	SHEET
DESIGNER	TED ROBERTS	# 1
JAN. 16/84	SCALE 1/2" = 1'-0"	
GROUND PLAN		



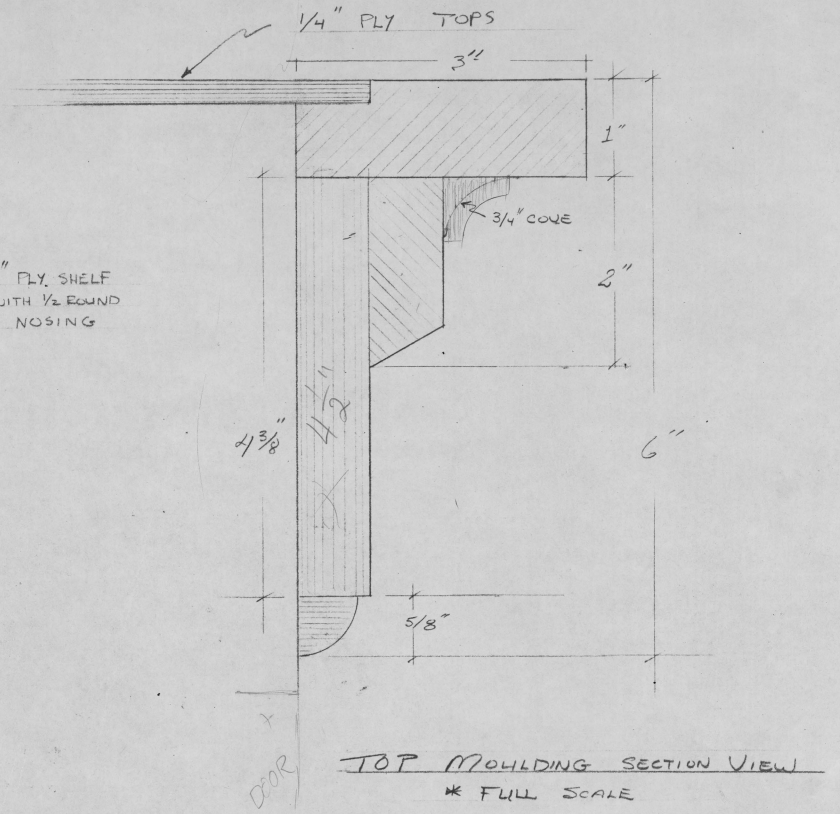
FRONT ELEV. CUPBOARD
 BUILD AS 3 SEPERATE UNITS FOR TOWERING



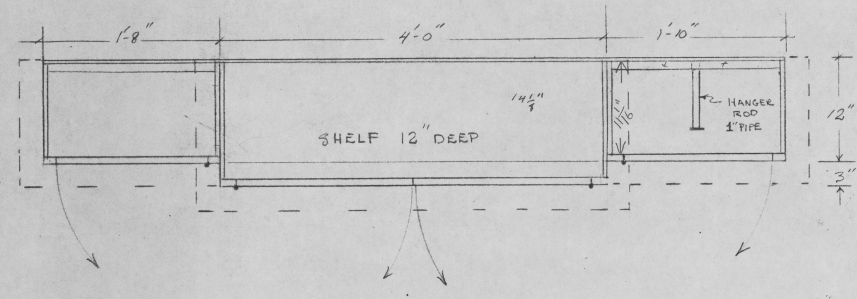
SR UNIT DETAIL ELEV.
 ↳ DOOR OPENS OUT
 ↳ DOOR 1 X 3 FRAME WITH 1/8" DOOR SKINS PANEL
 ↳ COAT HANGER ROD ON INSIDE
 ↳ 1/2" PLY SIDES / 1/4" PLY BACK
 * SL UNIT IS SAME DIMENTIONS AS SR



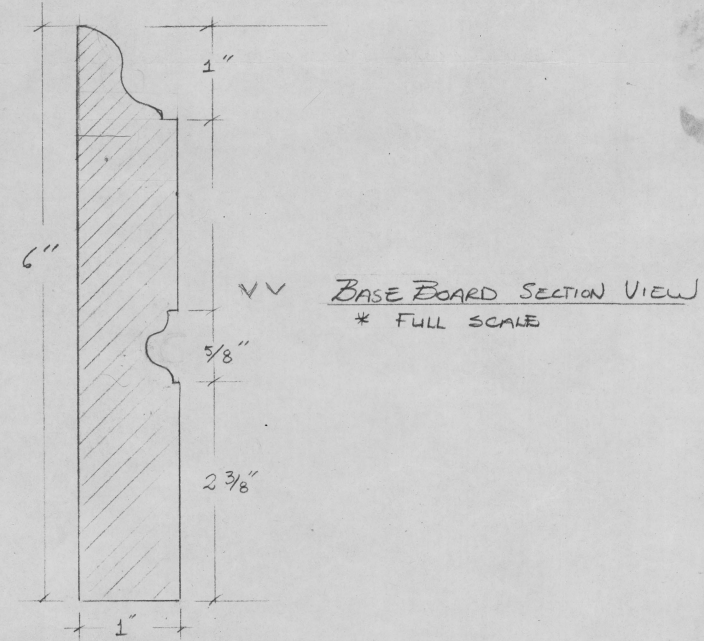
CENTRE UNIT DETAIL ELEV.
 - DOORS OPEN OUT / BRASS TEAR-DROP HANDLES & HINGES
 - SIDES 1/2" PLY / 1/4" PLY BACK
 - LOWER DOOR 1/8" PANEL RECESS 5/8"
 - UPPER DOORS 1/8" FLEXY LEADED GLASS (MAT BOARD) STRIPS
 - BOLT TO OUTSIDE CLOTH'S CUPBOARDS
 - ADD 5/8" PLY CENTRE SUPPORT TO BOOK SHELVES



TOP Moulding SECTION VIEW
 * FULL SCALE

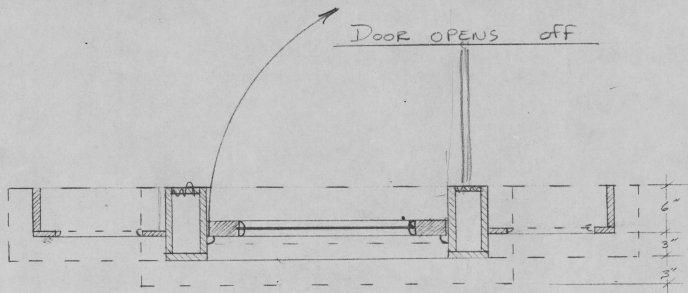


TOP VIEW

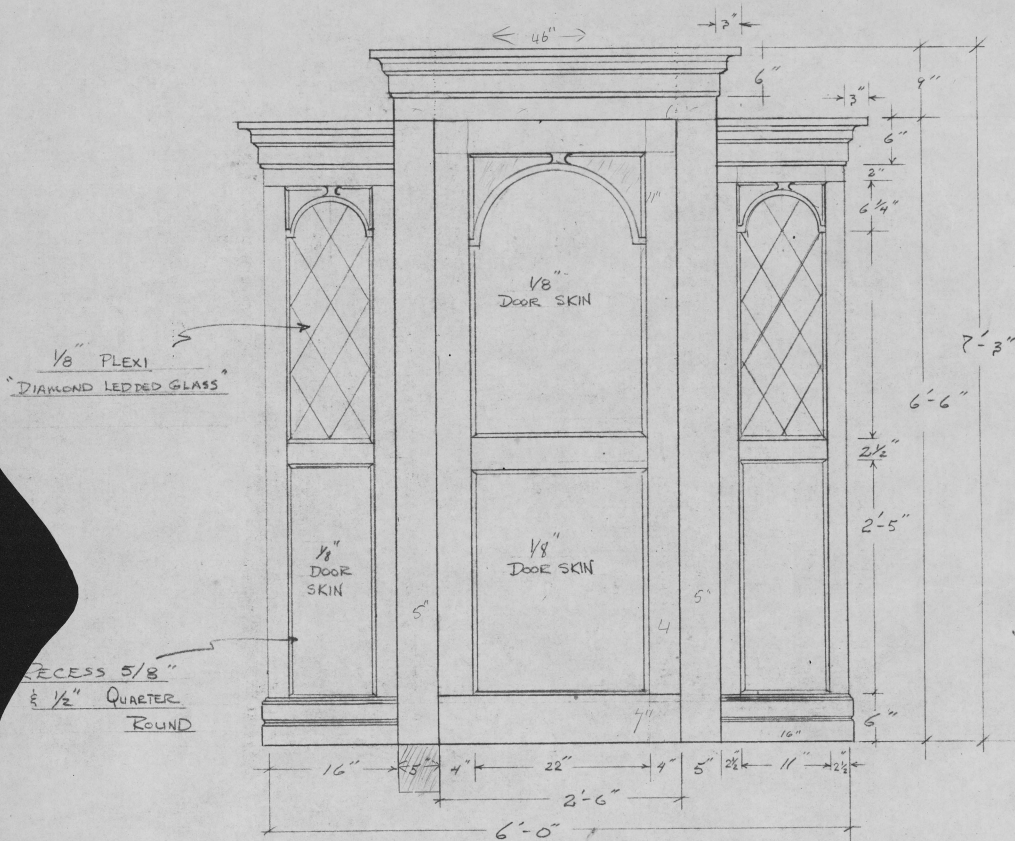


BASE BOARD SECTION VIEW
 * FULL SCALE

<u>"MASS APPEAL"</u>		
NEPTUNE THEATRE, HALIFAX		
DIRECTOR	LARRY LILLO	SHEET
DESIGN	TED ROBERTS	# 2
JAN. 14/84	SCALE 1" = 1'-0"	
BOOK SHELF/CLOSET UNITS		



TOP VIEW



FRONT ELEVATION

SB DOOR UNIT

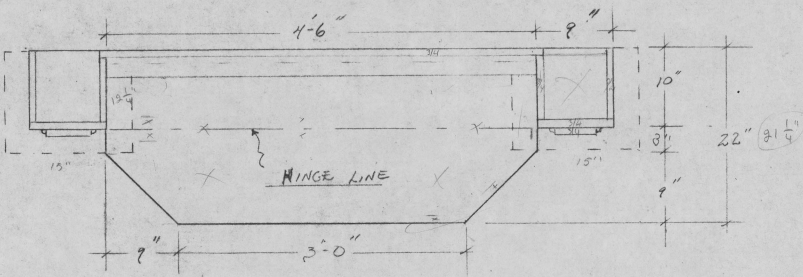
- CROWN MOULDING & BASE BOARD SAME AS BOOKSHELF UNIT DRWG. #2
- DOOR HARDWARE ANTIQUE ORNATE BRASS
- UNIT TO BE SUPPORTED WITH POSTS INTO THE MASS APPEAL STAGE PLATFORM & A STAGE BRACE ON LHS SIDE OF DOOR

SCALE 1" = 1'-0"

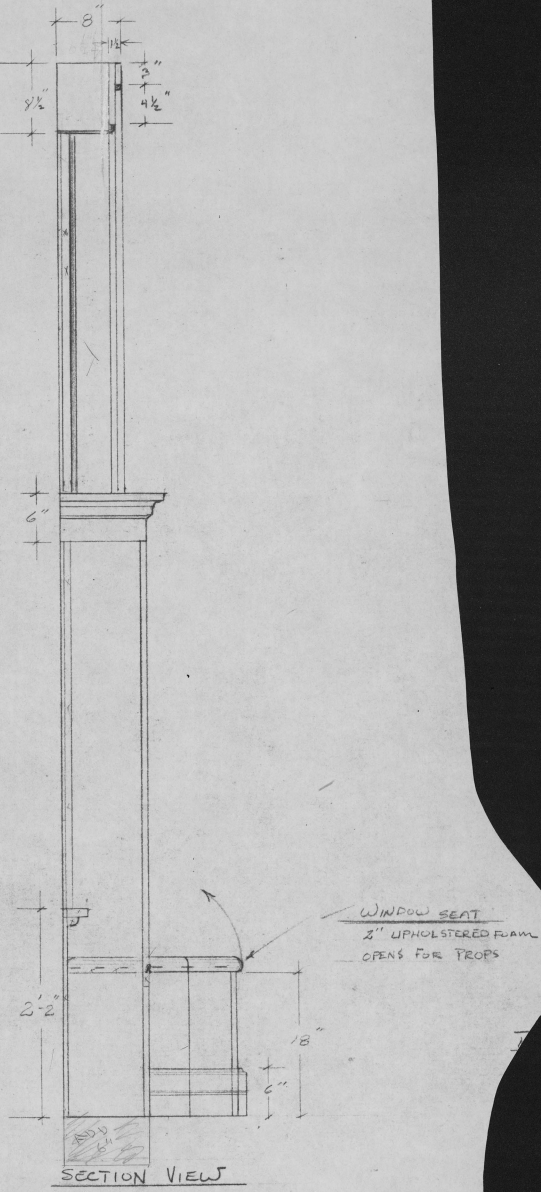
<u>"MASS APPEAL"</u>		
NEPTUNE THEATRE, HALIFAX		
DIRECTOR	LARRY LILLO	SHEET
DESIGNER	TED ROBERTS	# 3
JAN. 16/84	SCALE 1" = 1'-0"	
GOTHIC WINDOW & SEAT & DOOR UNIT		



FRONT ELEVATION



TOP VIEW

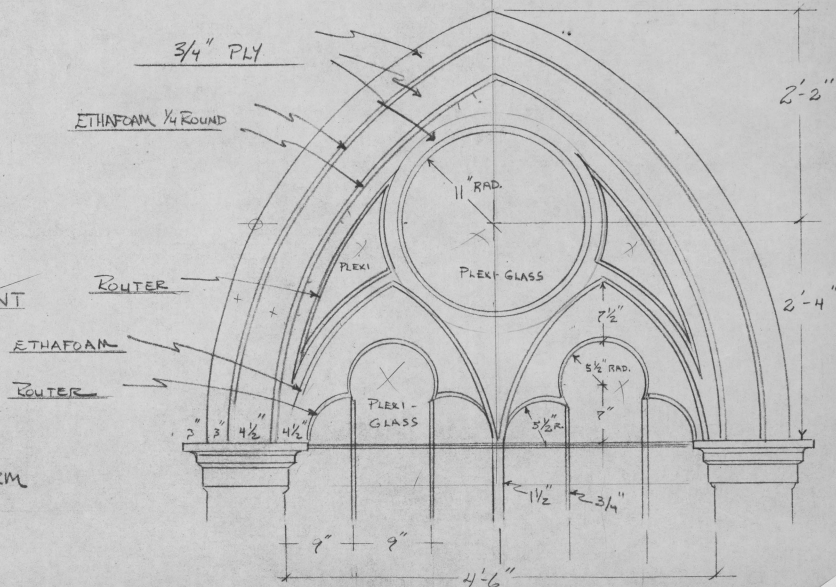


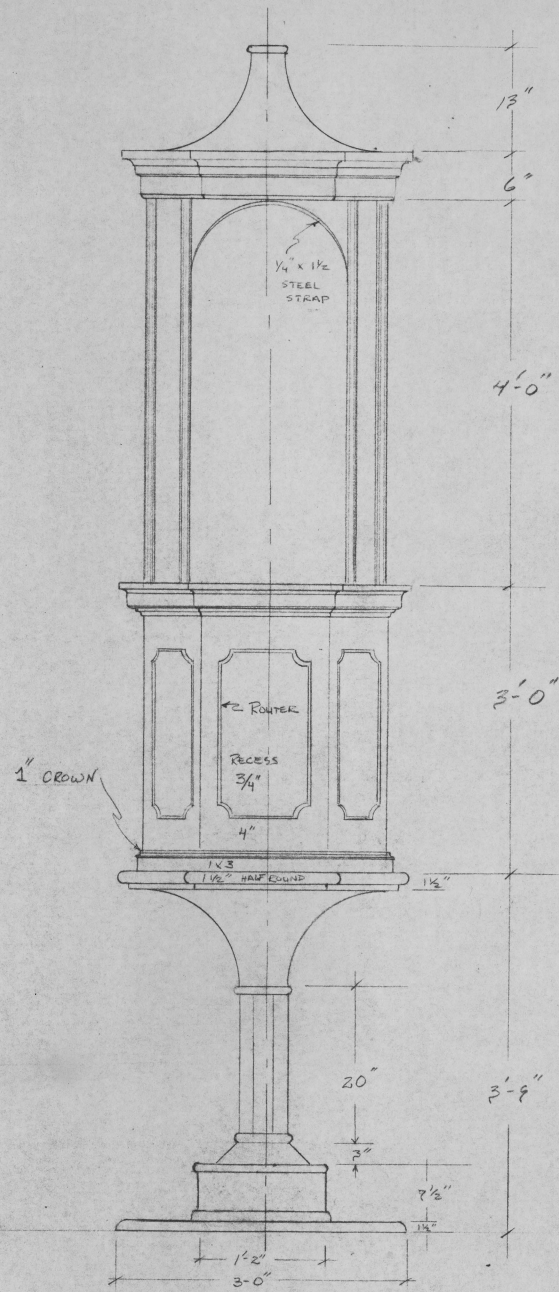
SECTION VIEW

WINDOW & WINDOW SEAT

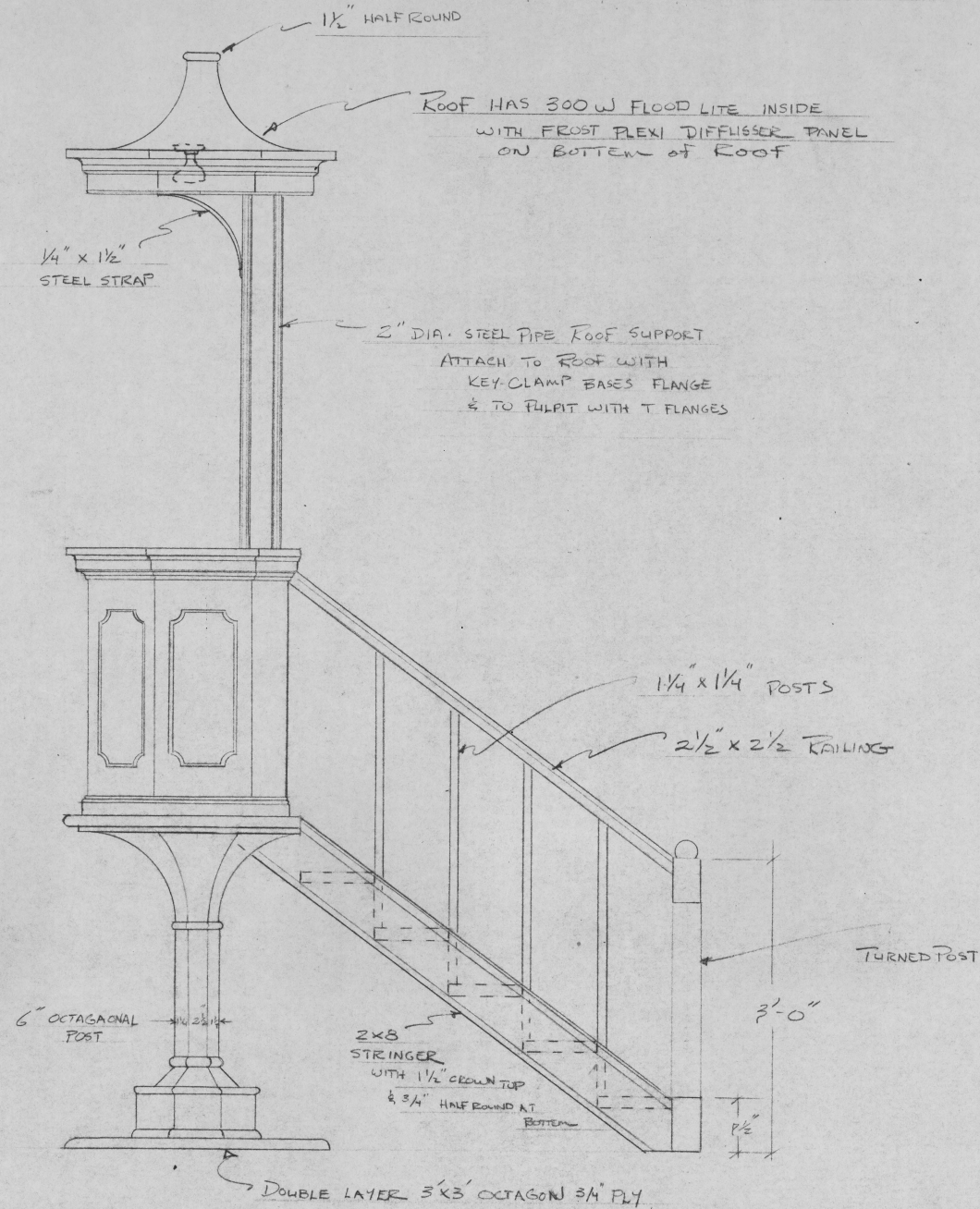
- TOP OF WINDOW WILL RECEIVE STAIN GLASS TREATMENT
 - BASE BOARD & PILLAR CAPITALS SAME AS BOOK SHELF UNIT DRWG. # 2
- * SCALE 1" = 1'-0"

↳ WINDOW UNIT TO BE ANCHORED WITH POST'S INTO "MASS APPEAL" STAGE PLATFORM

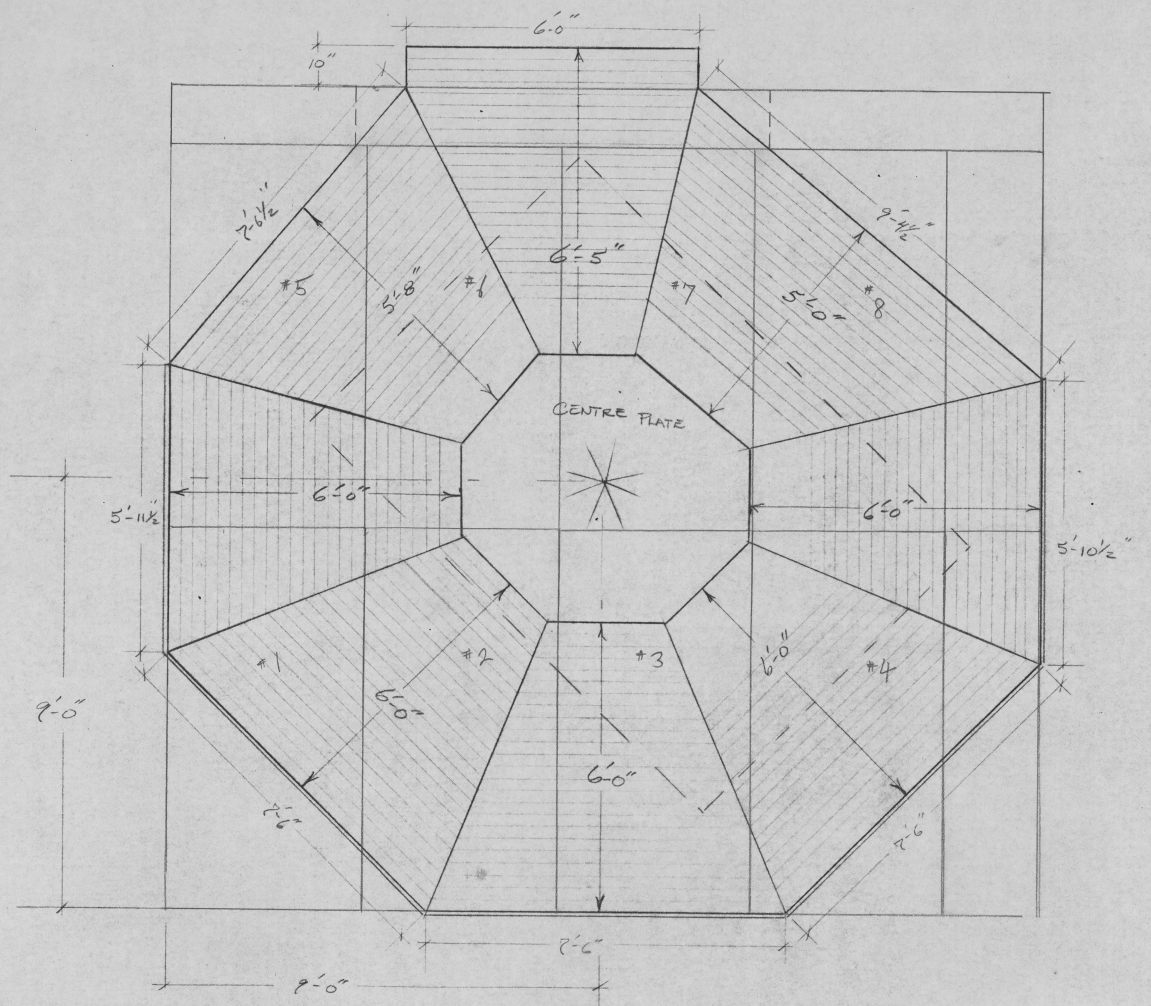




FRONT ELEV. PULPET WITH ROOF

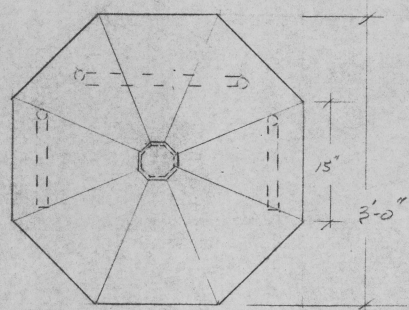


SIDE ELEV. PULPET & STAIRS

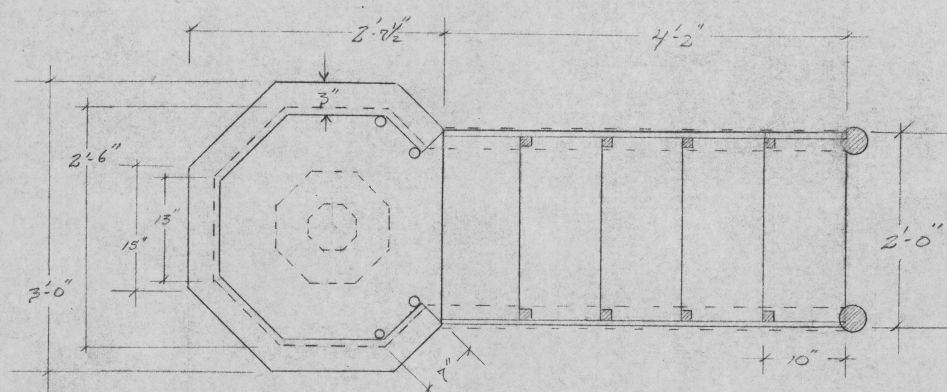


HARDWOOD FLOOR

- * CARIBBOO PINE WOOD PANEL BOARDS (5/16 x 3/4 TONGUE & GROOVE)
- ↳ LAMINATE TO 1/4" PLY PIE SHAPES WHICH ARE FINISH NAILED TO THE 6" DECKS
- ↳ CENTRE PLATE TO BE PLYWOOD EQUAL TO THE COMBINED PANEL BOARD & 1/4" PLY
- ↳ CENTRE OF UNIT COVERED WITH 12" x 11-6" CARPET.
- SURFACE TO BE AT STAIN & SEVERAL COATS SATIN VARNISH
- FRONT FACE OF PLATFORM TO HAVE REMOVABLE FACE PLATE WITH CROWN MOULDING AT TOP

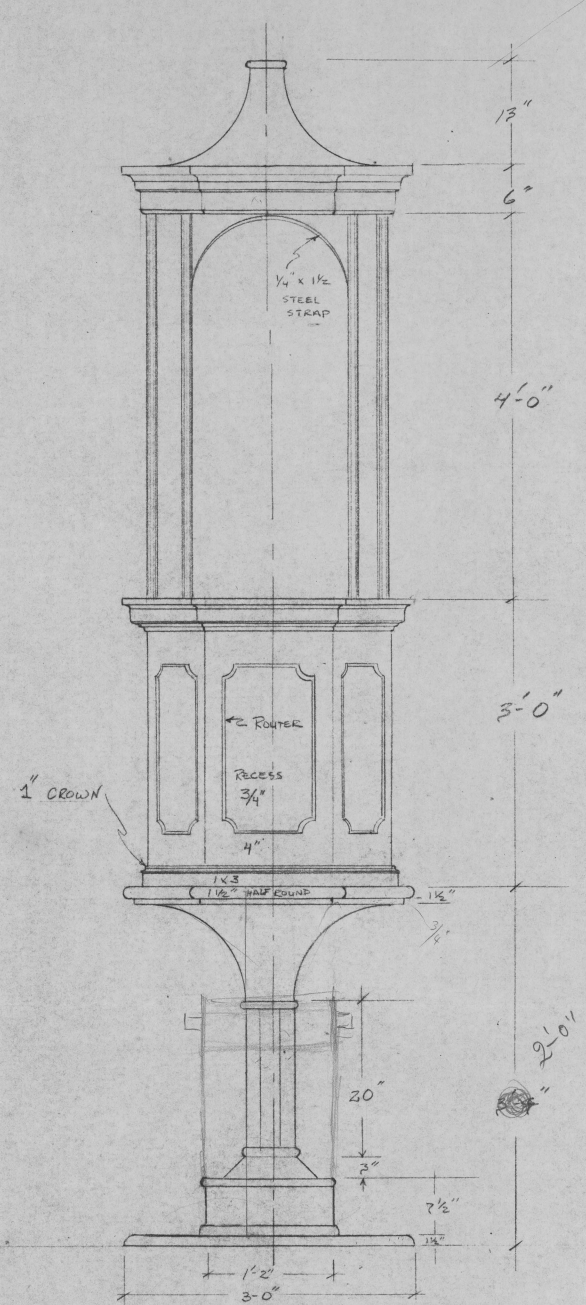


TOP VIEW ROOF

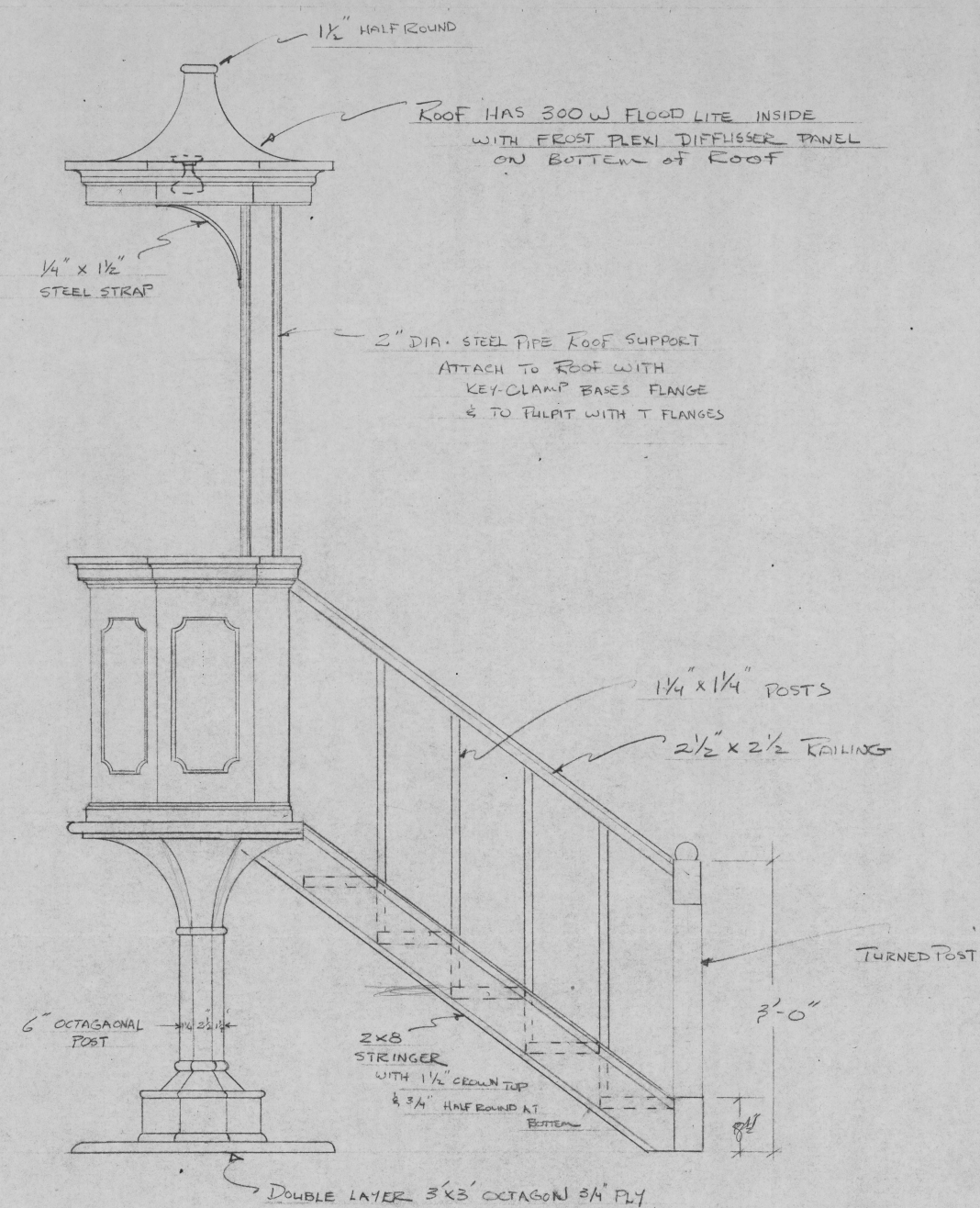


TOP VIEW PULPET & STAIRS

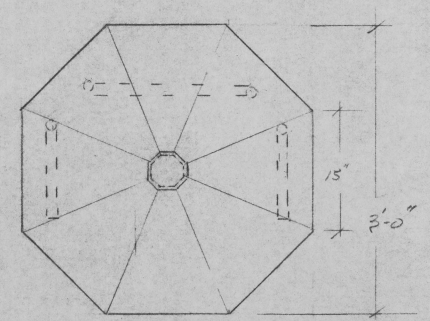
<u>TRASS APPEAL</u>		
NEPTUNE THEATRE, HALIFAX		
DIRECTOR	LARRY LILLO	SHEET
DESIGNER	TED ROBERTS	# 4
JAN. 22/64	SCALE - AS NOTED	
PULPET & FLOORING		



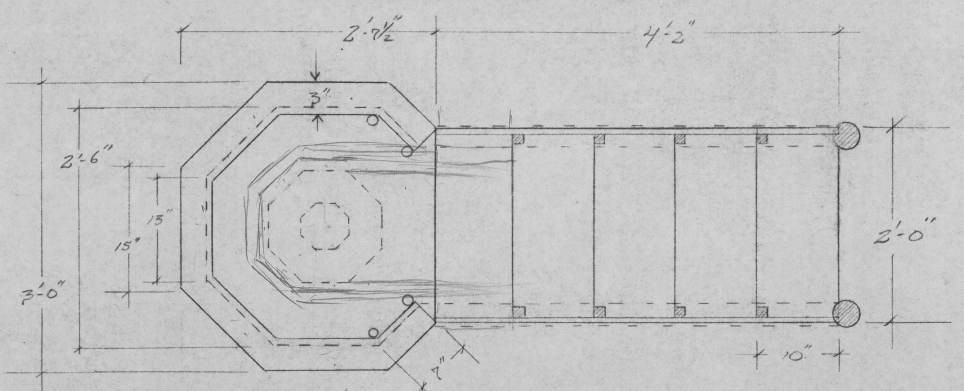
FRONT ELEV. PULPET WITH ROOF



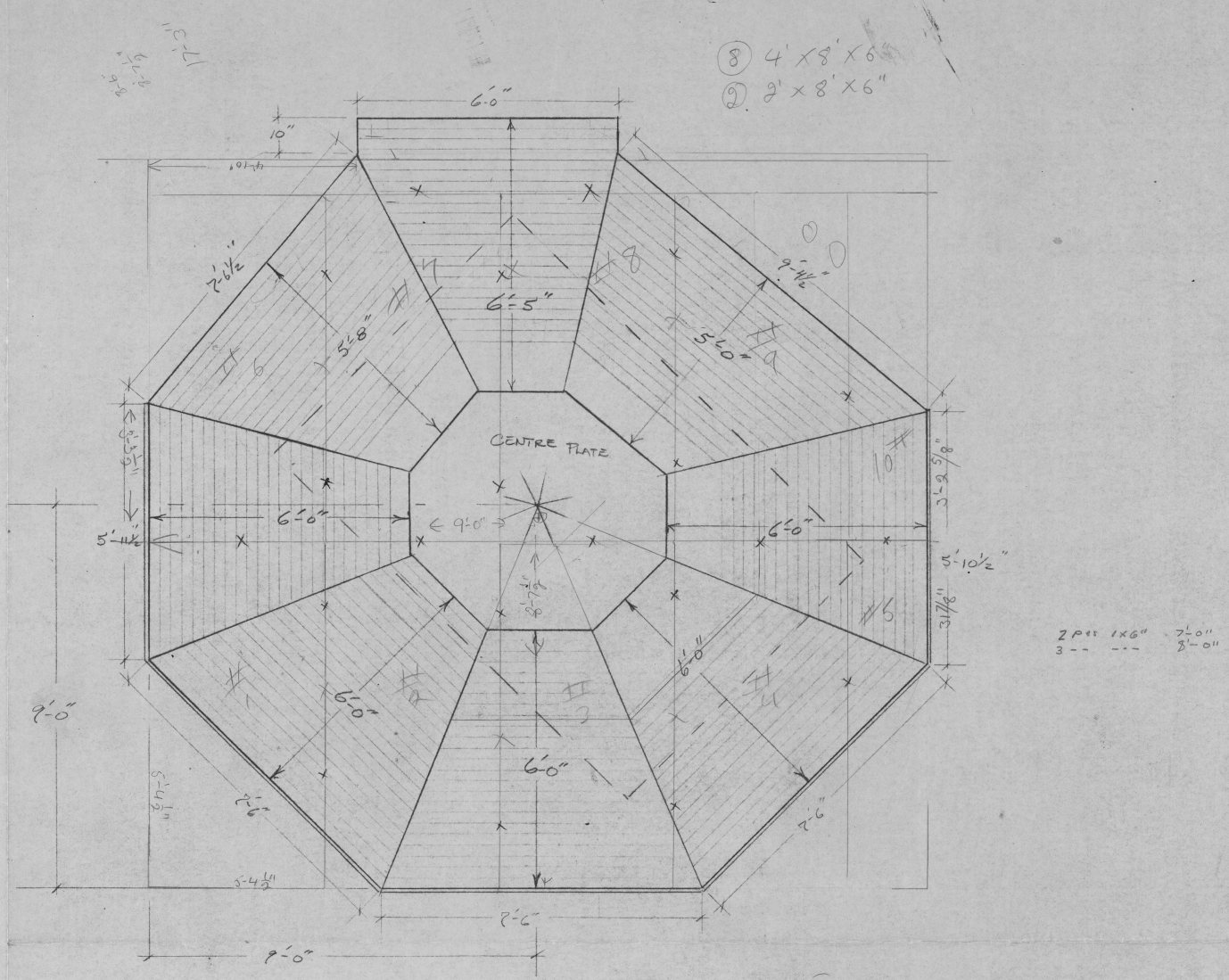
SIDE ELEV. PULPET & STAIRS



TOP VIEW ROOF



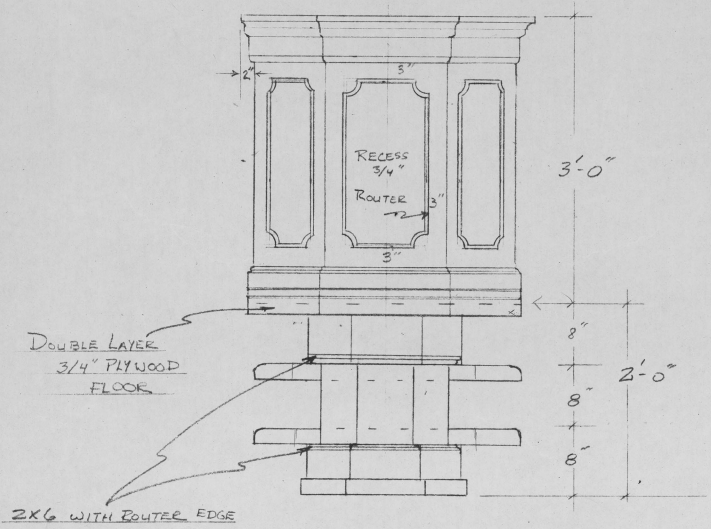
TOP VIEW PULPET & STAIRS



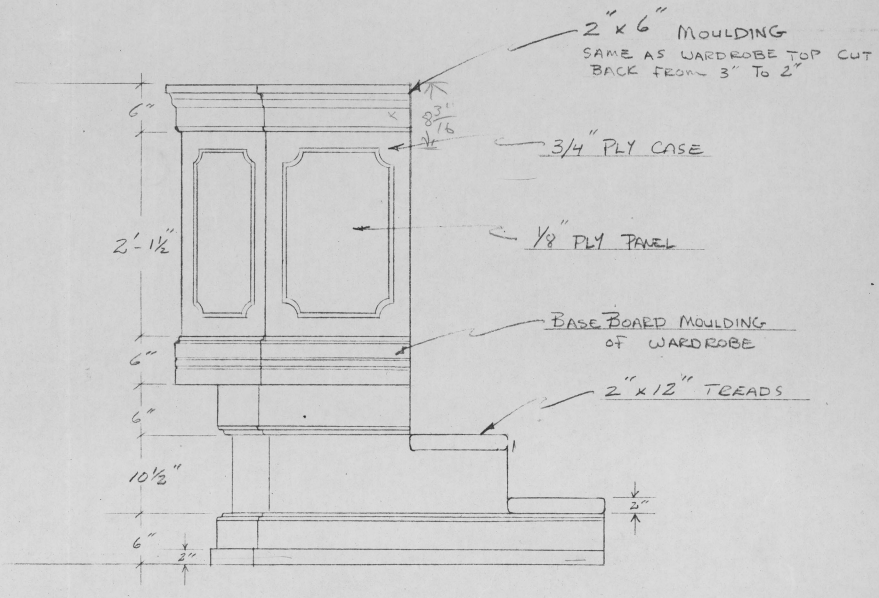
HARDWOOD FLOOR
 CARIBOO PINE WOOD PANEL BOARDS (5/16 x 3/4 TONGUE & GROOVE)
 ↳ LAMINATE TO 1/4" PLY PIE SHAPES WHICH ARE FINISH NAILED TO THE 6" DECKS
 ↳ CENTRE PLATE TO BE PLYWOOD EQUAL TO THE COMBINED PANEL BOARD & 1/4" PLY
 ↳ CENTRE OF UNIT COVERED WITH 7'-9" x 11'-6" CARPET
 - SURFACE TO BE AT STAIN & SEVERAL COATS SATIN VARNISH
 - FRONT FACE OF PLATFORM TO HAVE REMOVABLE FACE PLATE WITH CROWN MOULDING AT TOP

TRASS APPEAL		
NEPTUNE THEATRE, HALIFAX		
DIRECTOR	LARRY LILLO	SHEET #4
DESIGNER	TED ROBERTS	
JAN. 22/44	SCALE - AS NOTED	
PULPET & FLOORING		

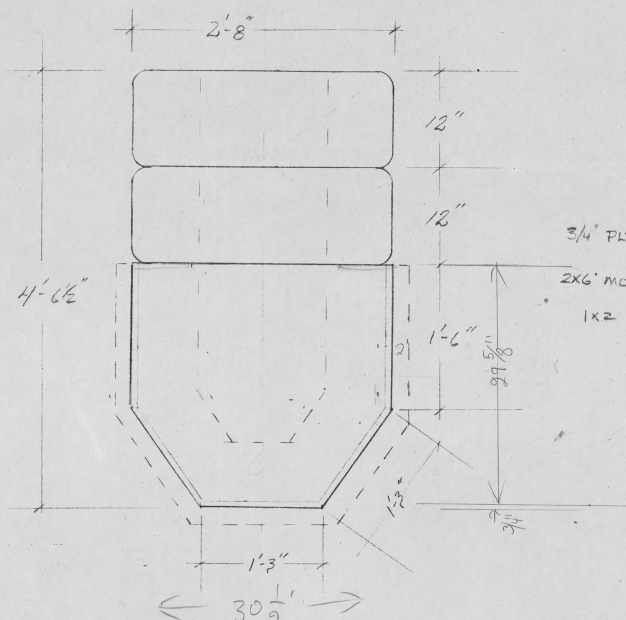
E



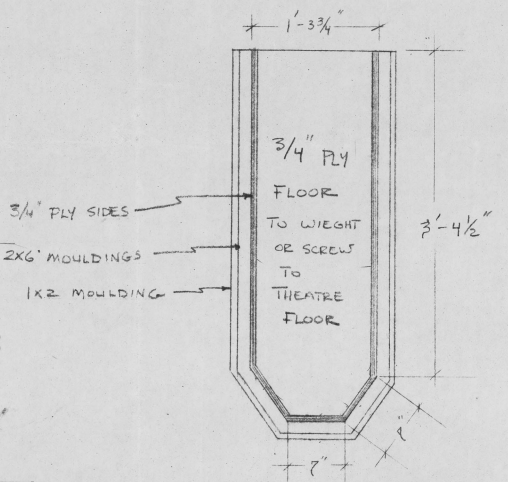
PULPIT
FRONT ELEVATION



PULPIT SIDE ELEV.



PULPIT
TOP VIEW

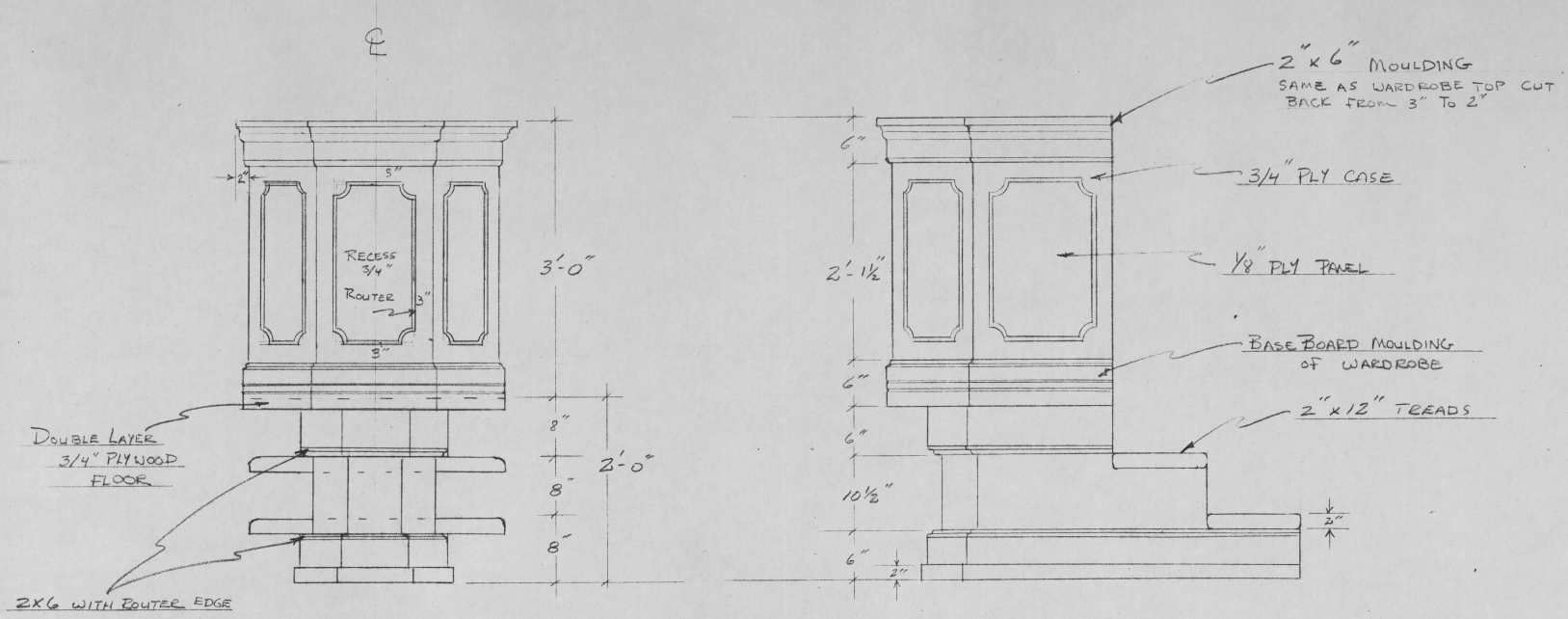


PULPIT-BASE
TOP VIEW

"MASS APPEAL" RVS'D. PULPIT
NEPTUNE THEATRE, HAUFAX

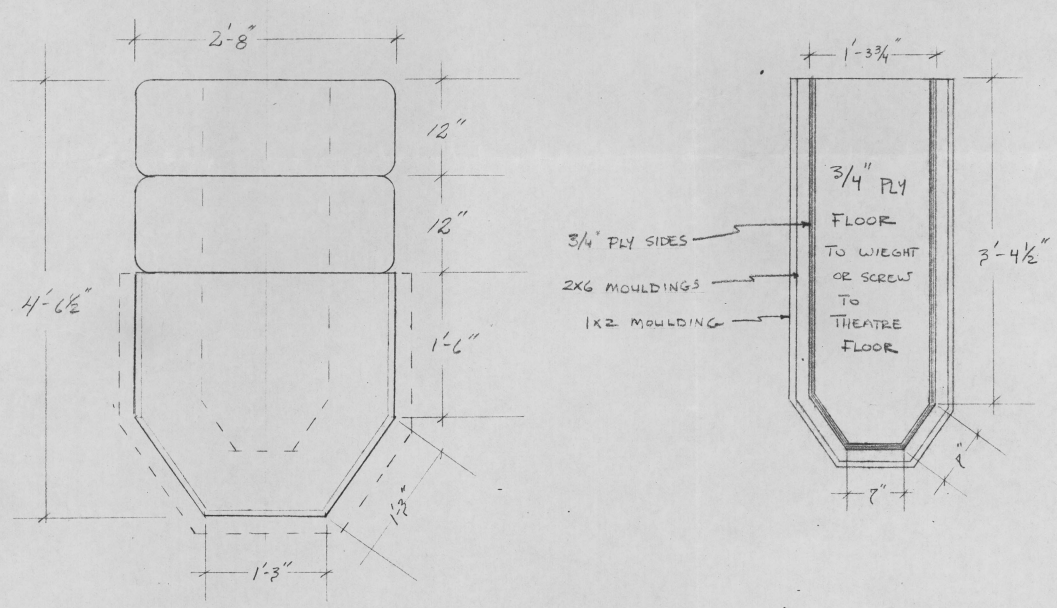
DESIGN TED ROBERTS
FEB. 2/84

SCALE 1" = 1'-0"



PULPIT
FRONT ELEVATION

PULPIT SIDE ELEV.

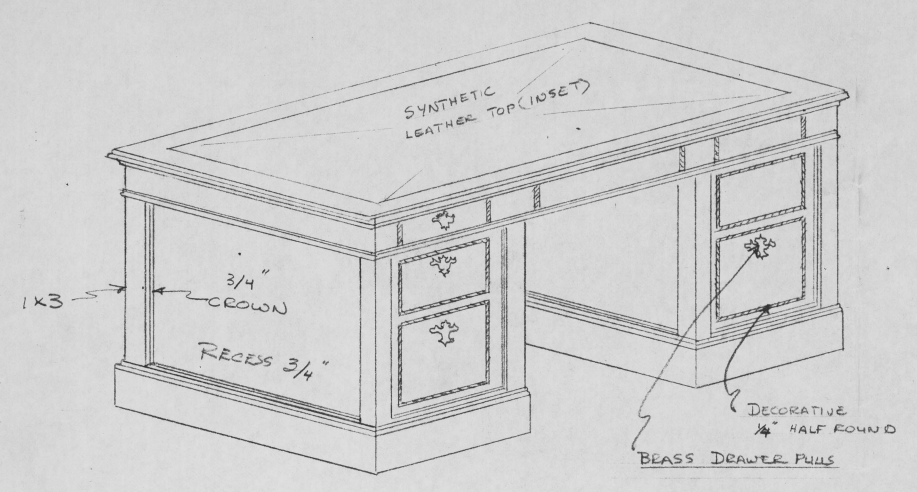


PULPIT
TOP VIEW

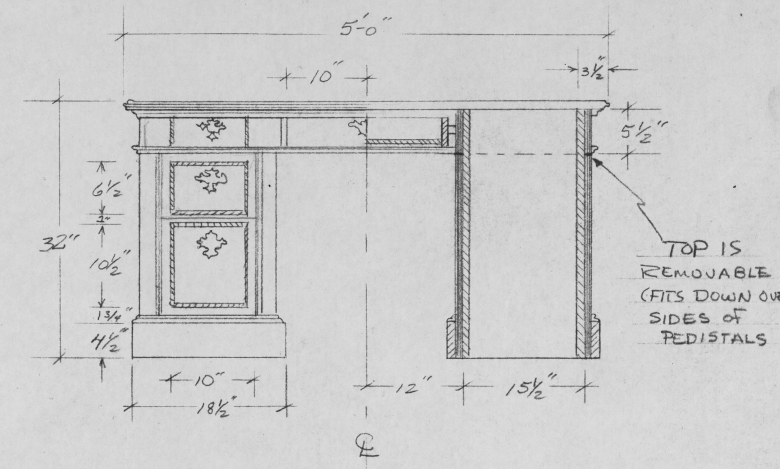
PULPIT-BASE
TOP VIEW

"MASS APPEAL" REVSD. PULPIT
NEPTUNE THEATRE, HALIFAX

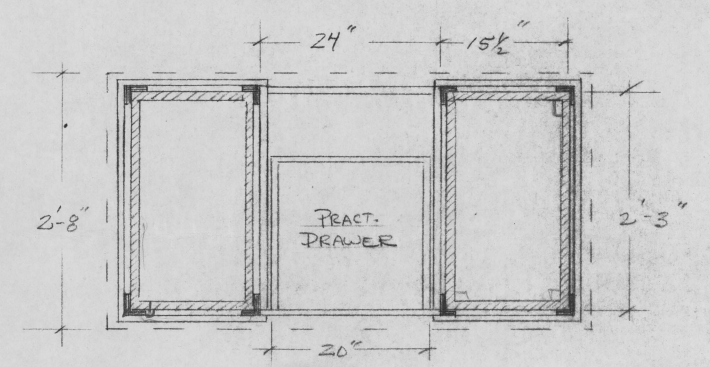
DESIGN TED ROBERTS
FEB. 2/84
SCALE 1" = 1'-0"



ISOMETRIC VIEW



FRONT ELEVATION

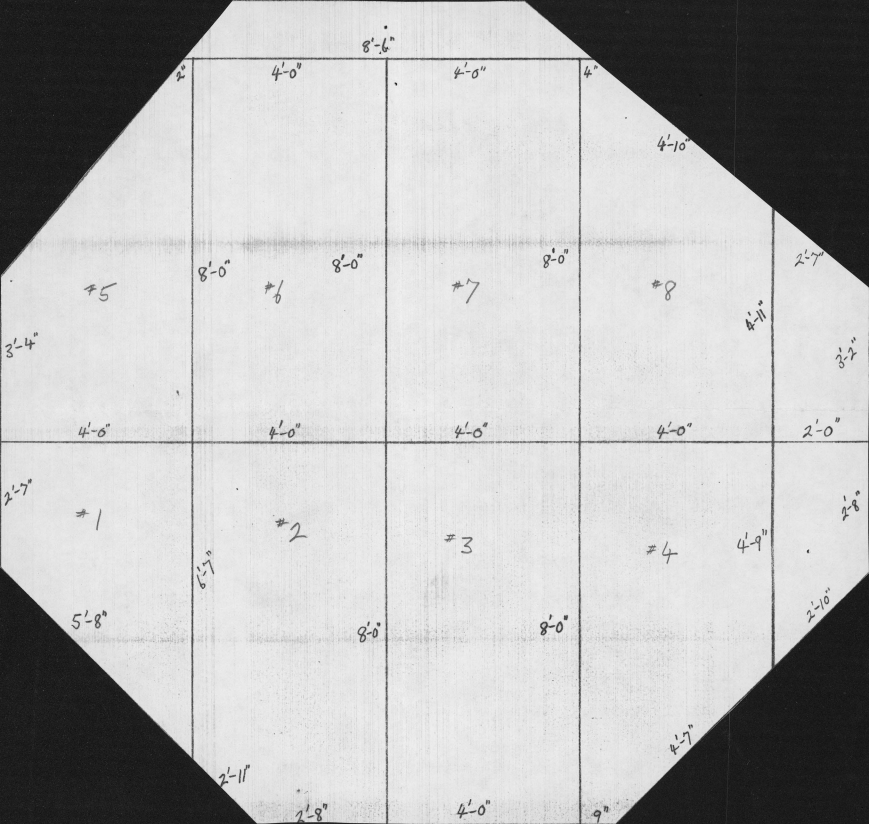


TOP VIEW

"MASS APPEAL" DESK

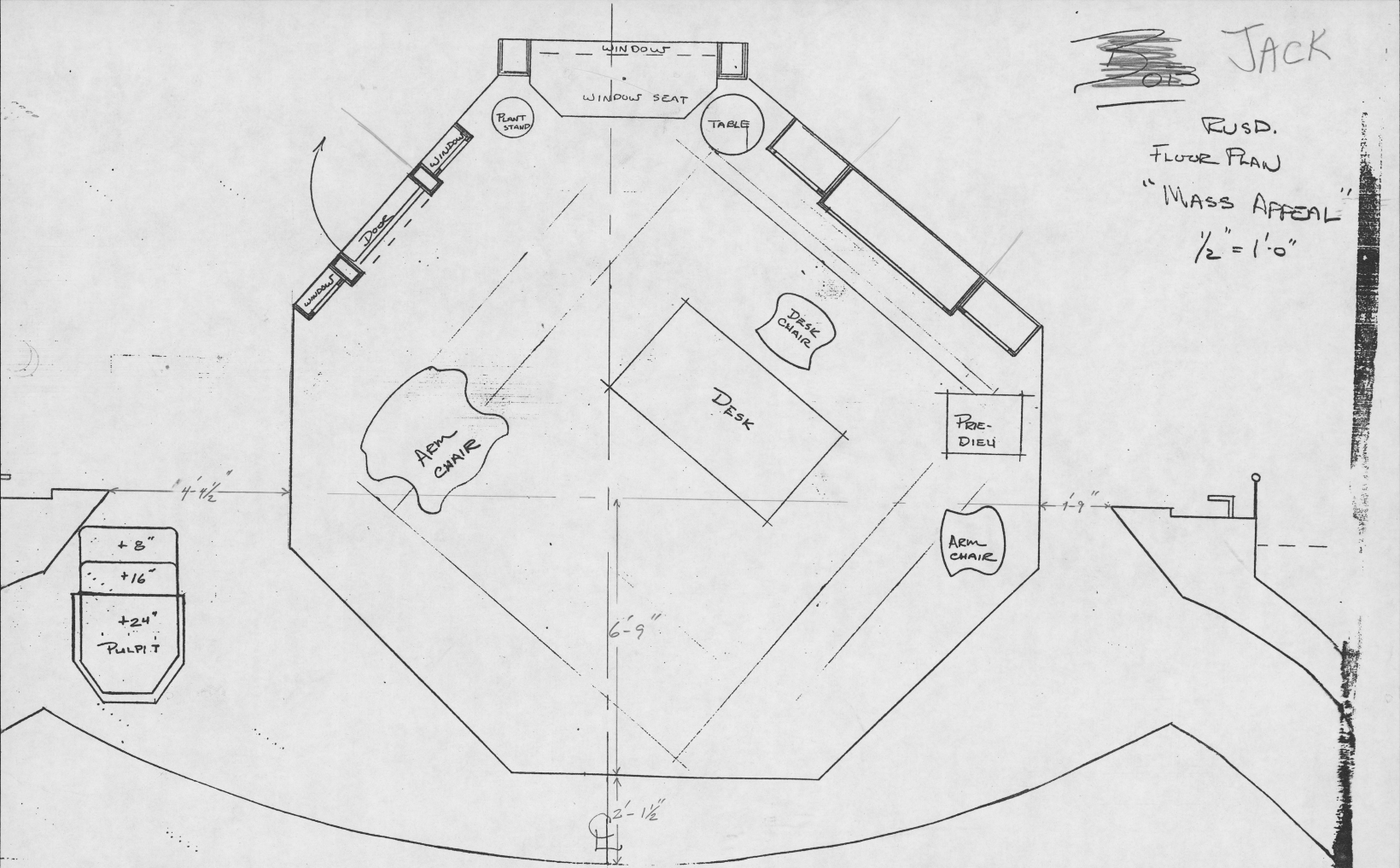
- TOP IS REMOVABLE FOR TOURING
- DESK IS PLY-WOOD CONST. COVERED WITH LIGHT COLOUR 1/8" MAHOGANY VENEER MOULDINGS OF PINE IF POSSIBLE

DESIGN - TED ROBERTS
FEB. 1/84
SCALE 1" = 1'-0"



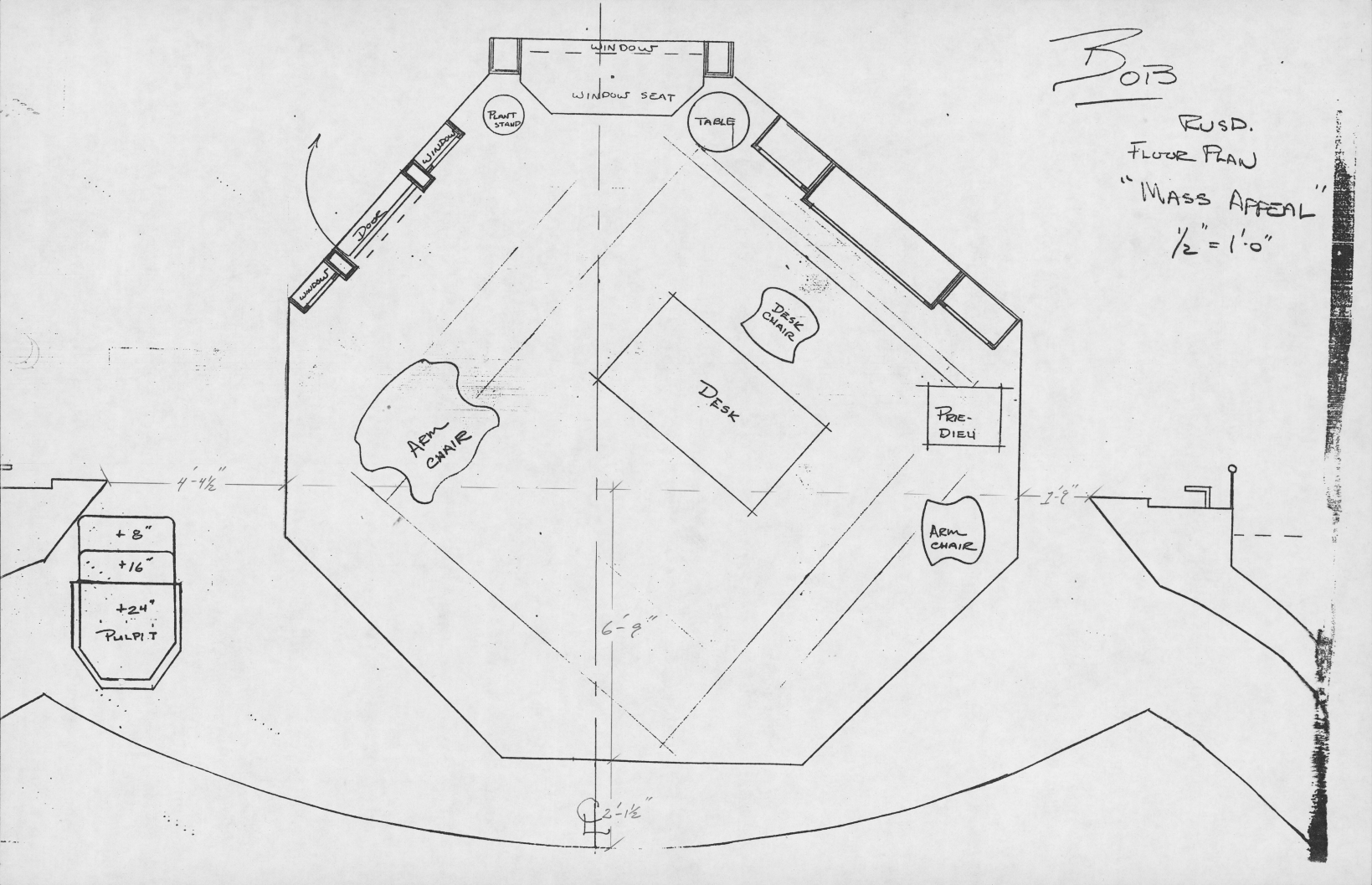
~~DOB~~ JACK

RUSD.
FLOOR PLAN
"MASS APPEAL"
1/2" = 1'-0"

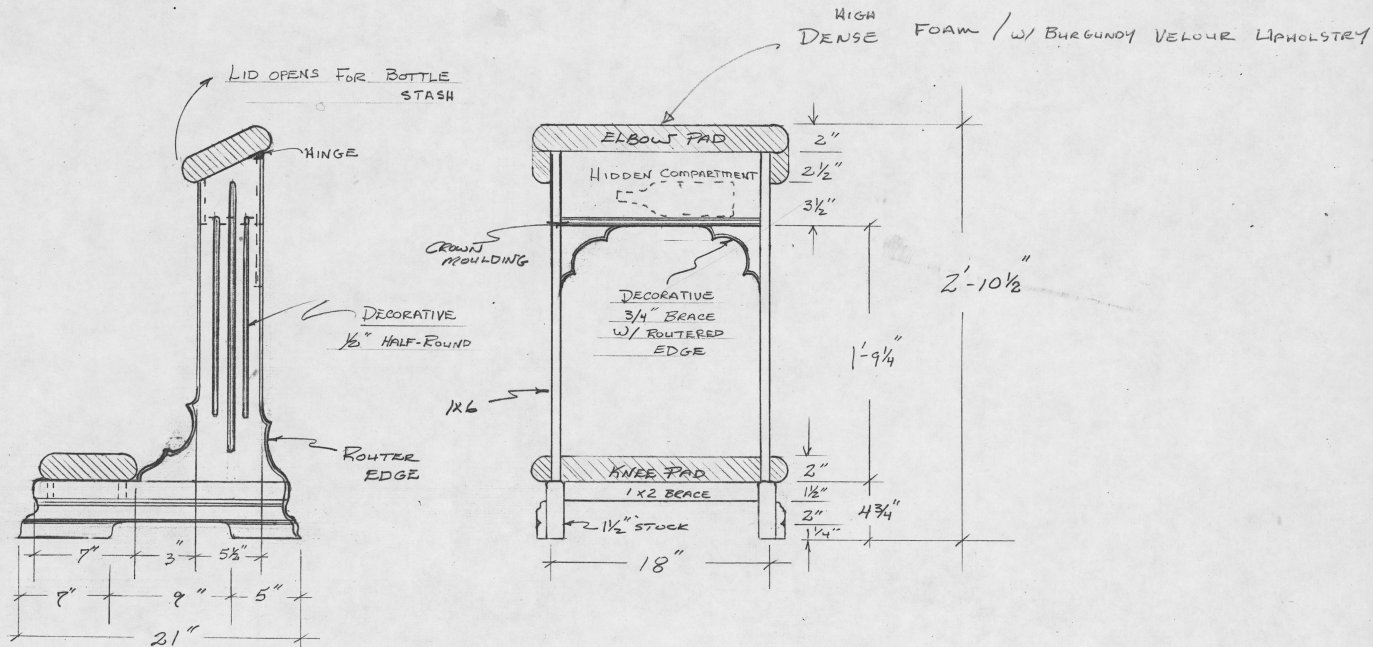


B
013

RUSD.
FLOOR PLAN
"MASS APPEAL"
1/2" = 1'-0"



HAL DAVID



"MASS APPEAL" PRIE-DUIK

NEPTUNE THEATRE, HALIFAX

PROPS DRWG. #6 SCALE 1/2" = 1'-0"

T. ROBERTS FEB. 6/84