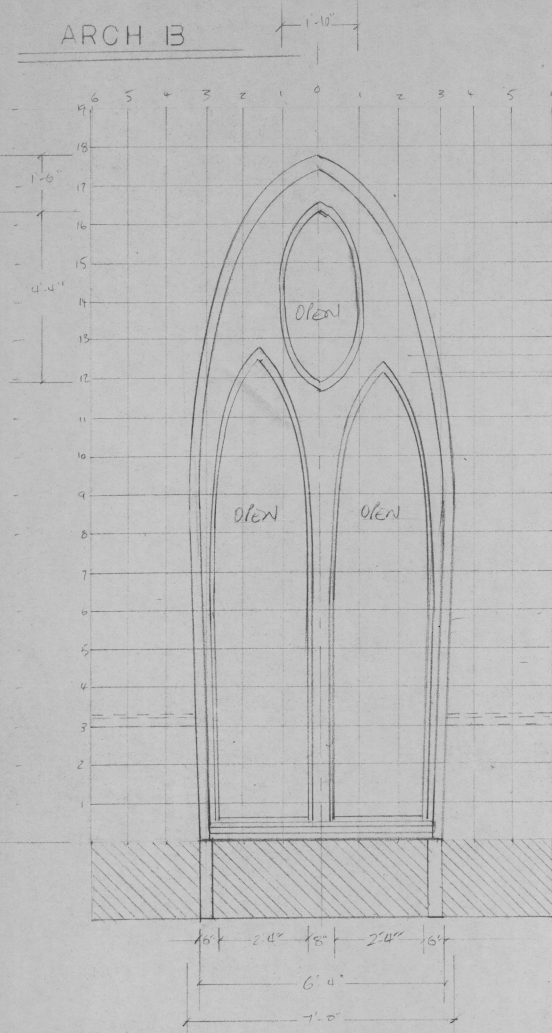
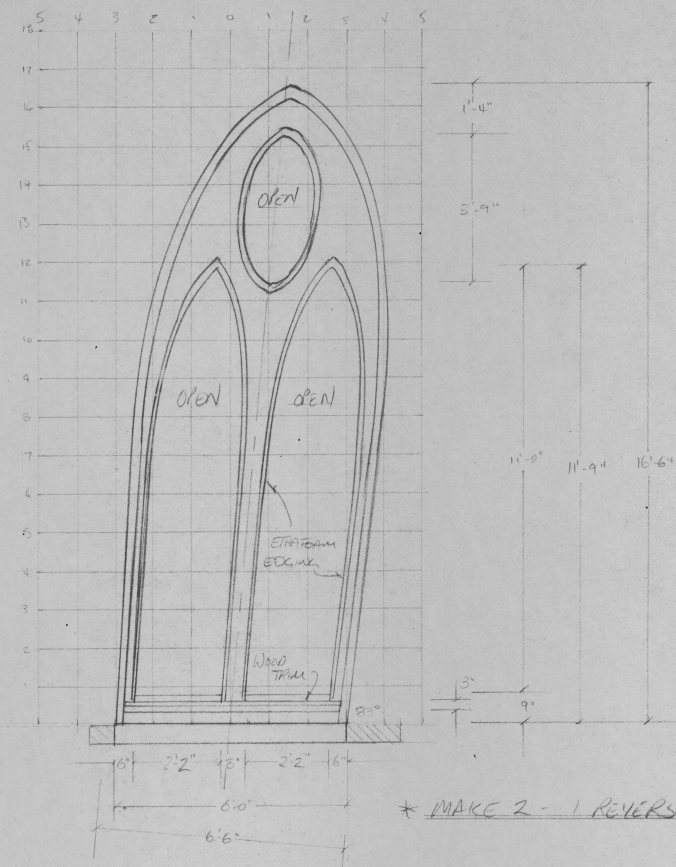


SAINTS & APOSTLES		
NEPTUNE THEATRE - STUDIO SERIES		
GROUNDPLAN	FEB 1, 1994	
SCALE: 1/4" = 1'-0"	1	DIR: B. MACDONALD
DRAW: B. LUMSDEN	<i>B. Lumsden</i>	

ARCH B



ARCH A (ARCH C' IS REVERSE OF A')



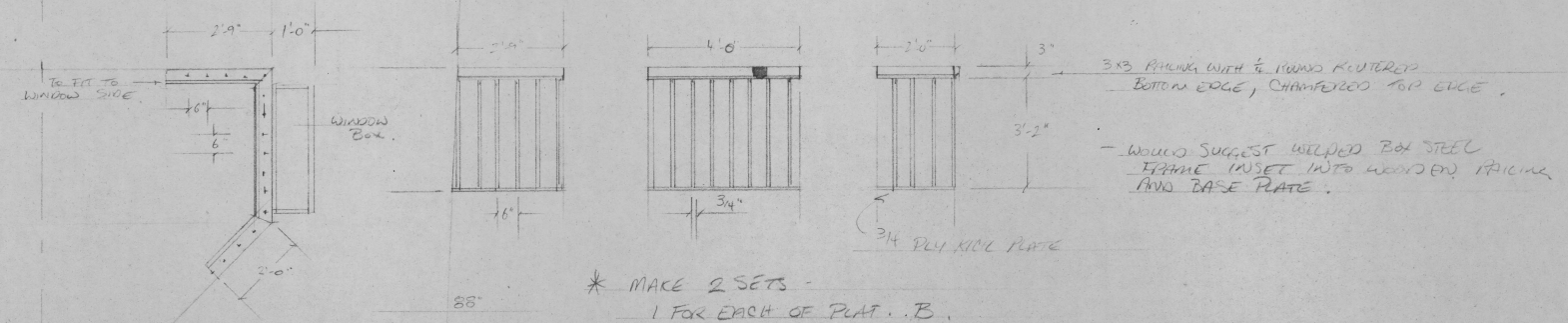
DEAD HUNG TO TOP

NOTES

- ALL STILE CONSTRUCTION
- TRIM & EDGING OF JAWLING THICKNESSES OF ETHAFOAM 1", 2", 3"

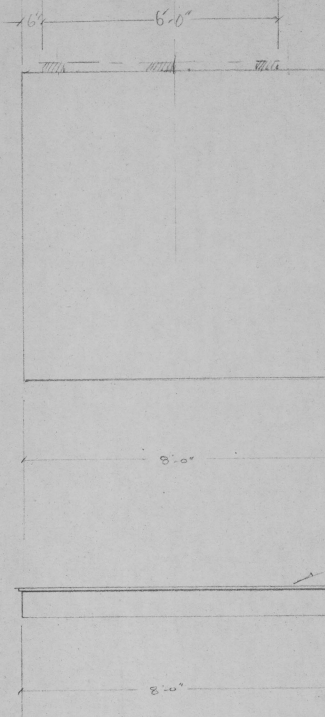
1'-0" JACK BRACE TO FACE

BALCONY RAILING

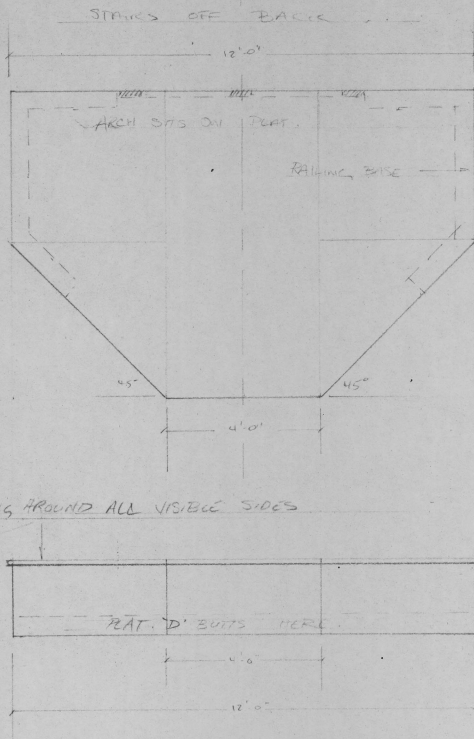


SAINTS & APOSTLES	
NEPTUNE THEATRE - STUDIO SERIES	
ELEVATION	FEB 1, 1994
SCALE: 1/2" = 1'-0"	DIR: B. MACDONALD
DRAW: B. LUMSDEN	B. LUMSDEN

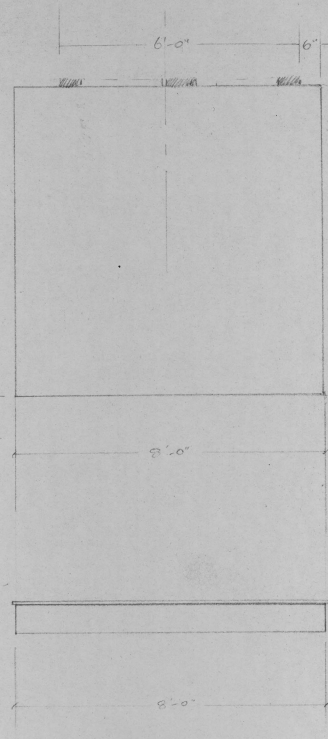
PLAT A



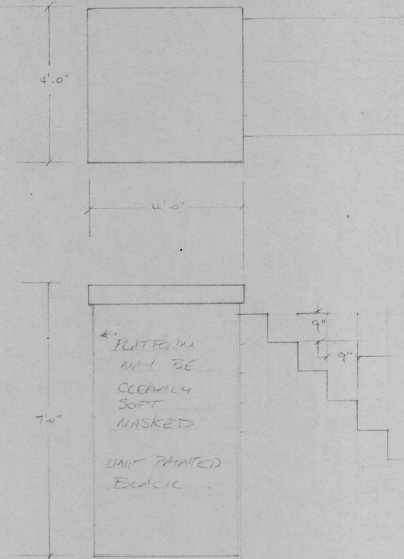
PLAT B



PLAT C

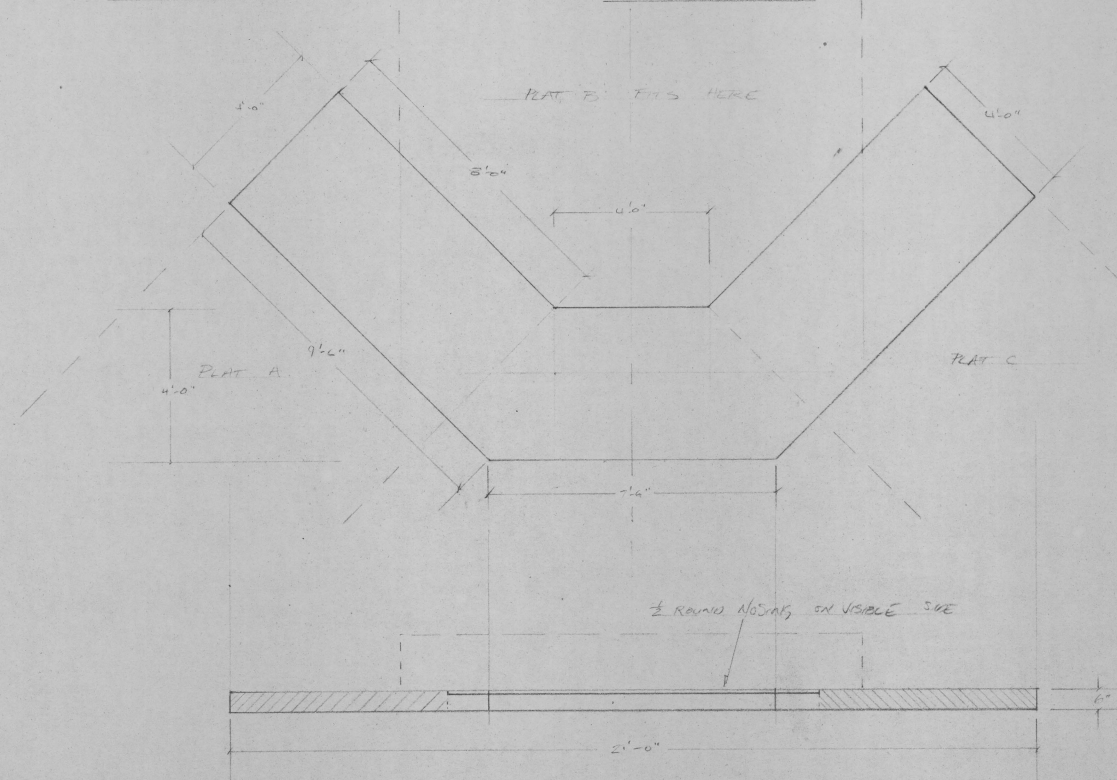


ARCHES



* PLATEFORMS FINISHED ON ALL VISIBLE SIDES

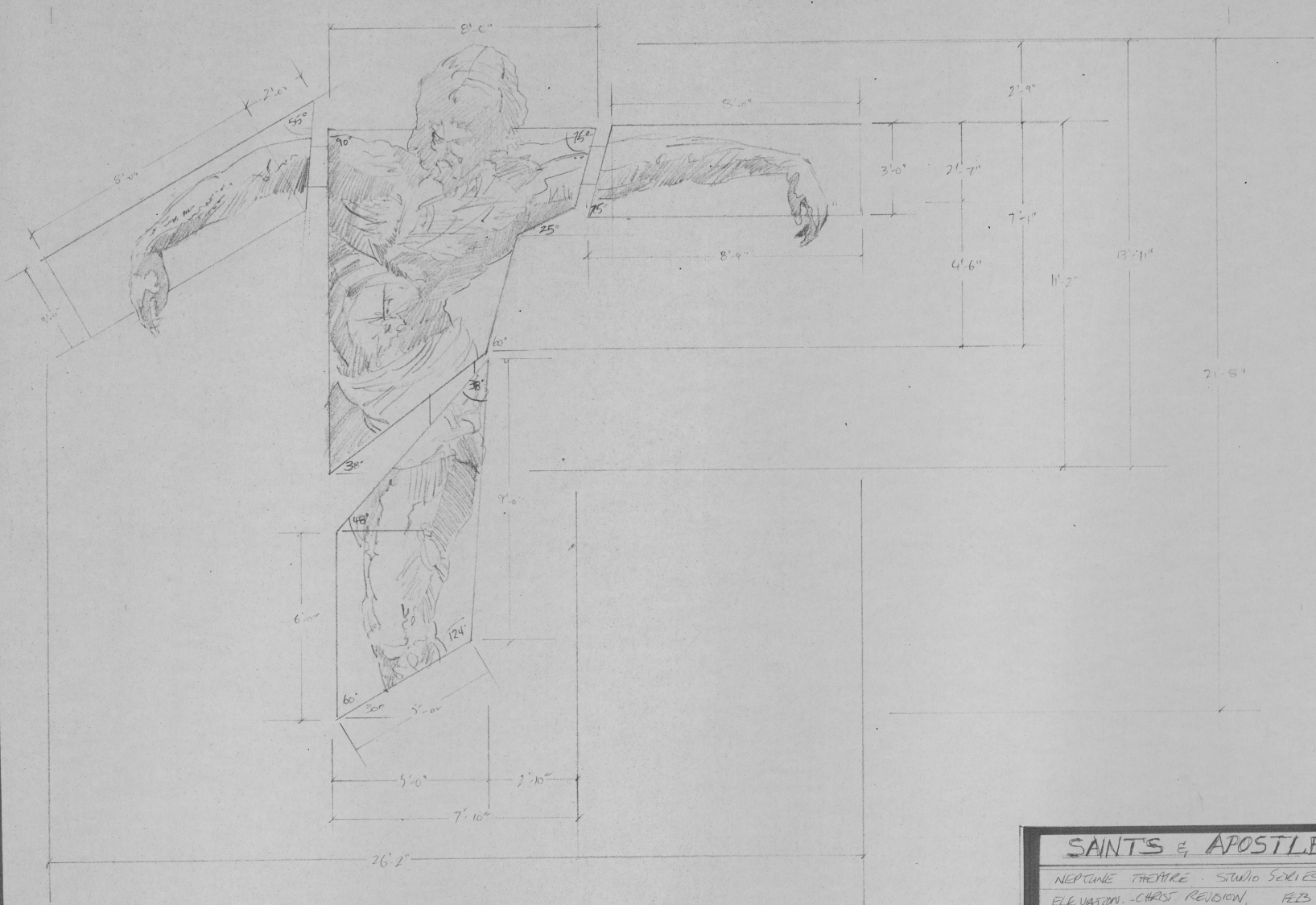
PLAT D



SAINTS & APOSTLES	
NEPTUNE THEATRE - STUDIO SERIES	
ELEVATION	FEB 1, 1994
SCALE: 1/2" = 1'-0"	DIR: B. MACDONALD
DRAW: B. LUMSDEN	<i>[Signature]</i>



SAINTS & APOSTLES			
NEPTUNE THEATRE - STUDIO SERIES			
ELEVATION		FEB 1, 1994	
SCALE: 1/8" = 1'-0"	4	DIR: B. MACDONALD	
DRAW: B. LUMSDEN	4	<i>B. Lumsden</i>	



SAINTS & APOSTLES		
NEPTUNE THEATRE - STUDIO SERIES		
ELEVATION - CHRIS REVISION, FEB 2 '74		
SCALE: $\frac{1}{2}" = 1'-0"$	4 of 4	DR: B. MacDONALD DES: B. LUNSDEN