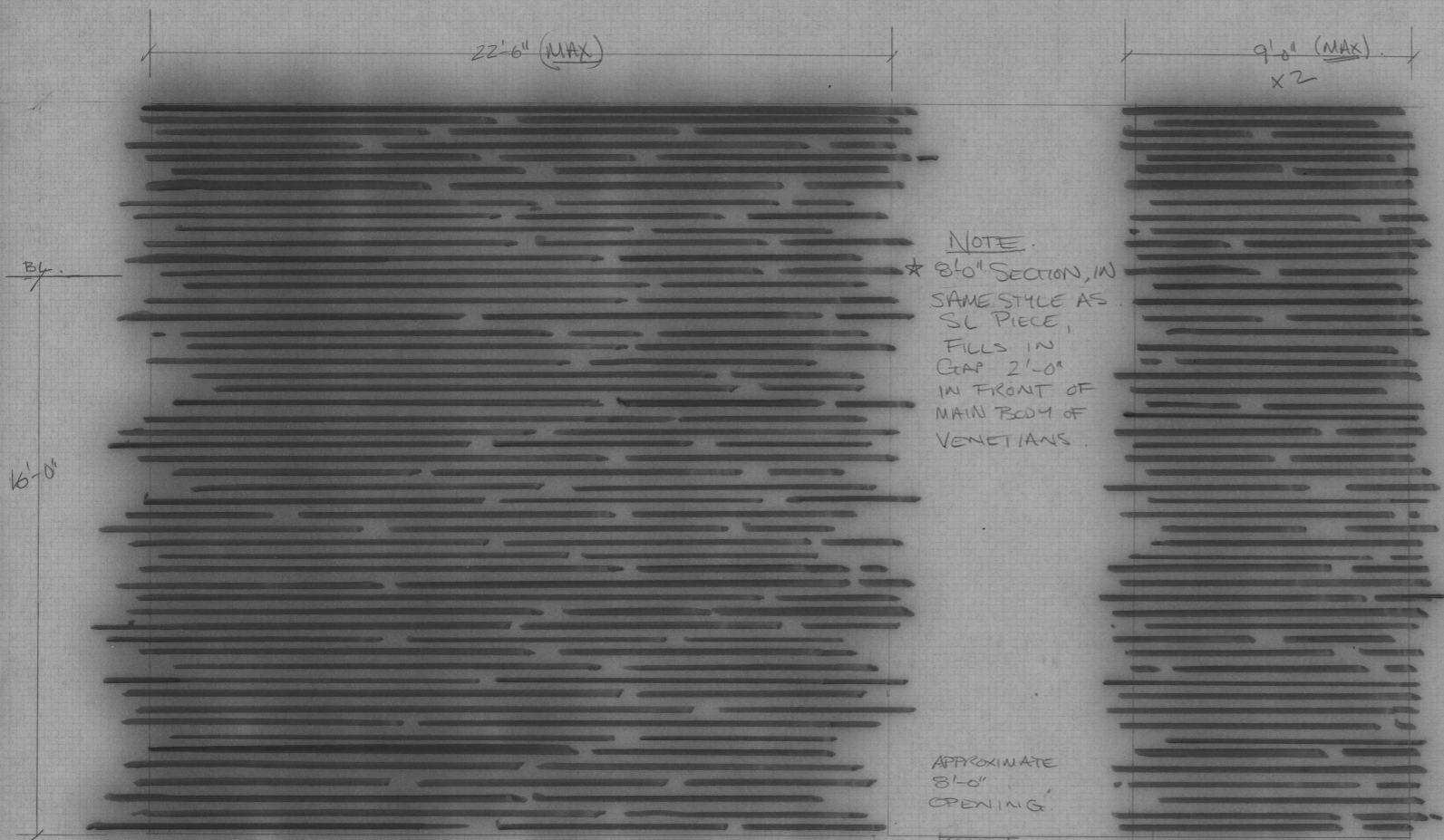


SEDUCED - BY SAM SHEPPARD  
 NEPTUNE THEATRE - STUDIO SEASON - DUNN STAGE  
 GROUNDPLAN  
 SCALE 1/4" = 1'-0"  
 DIB B. McDONALD

OCT 28 '96  
 PG 1  
 OF 2  
 DIB B. LUMSDEN



22'-6" (MAX)

9'-0" (MAX)  
x2

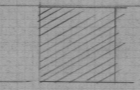
Bl.

16'-0"

NOTE.

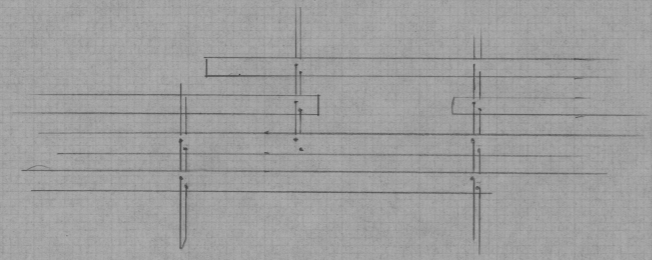
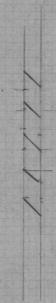
\* 8'-0" SECTION, IN  
SAME STYLE AS  
SL PIECE,  
FILLS IN  
GAP 2'-0"  
IN FRONT OF  
MAIN BODY OF  
VENETIAN.

APPROXIMATE  
8'-0"  
OPENING.

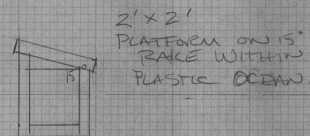


POSITION OF  
PLATFORM.

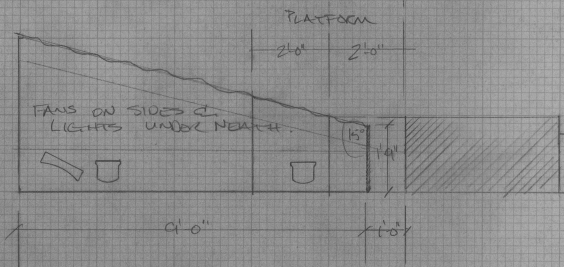
\* ANGLED 3" BLIND  
WITH 3" SPACING.



BLINDS ARE NON PRACTICAL.

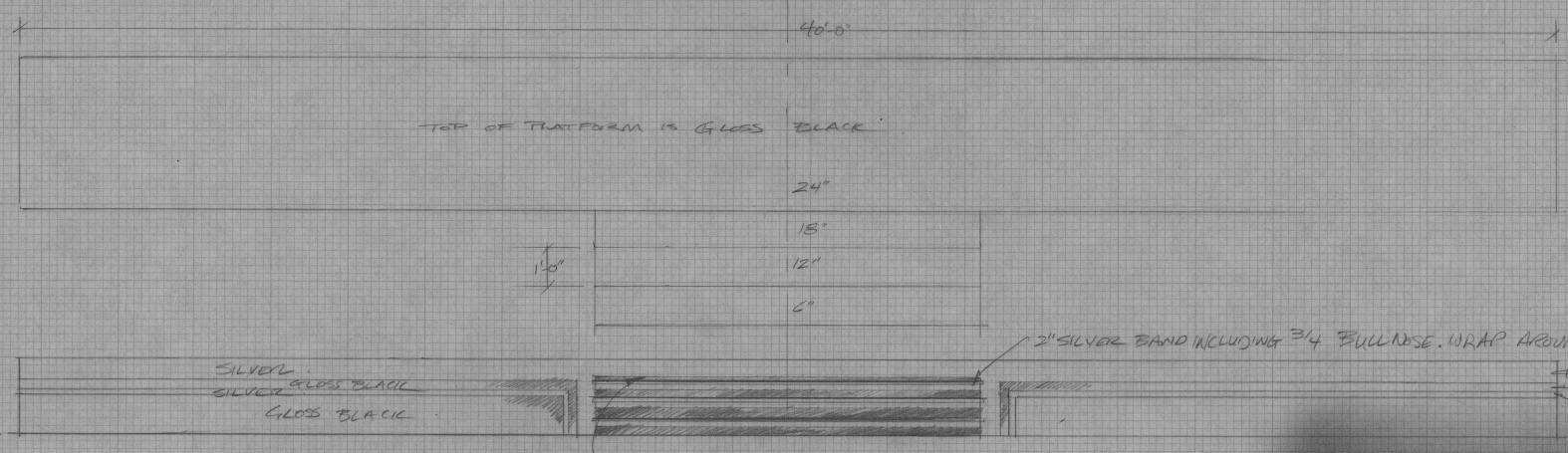
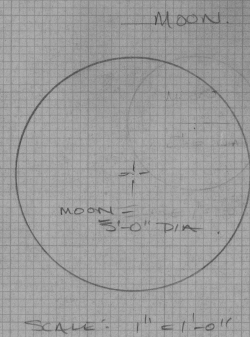
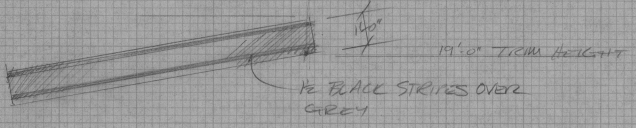
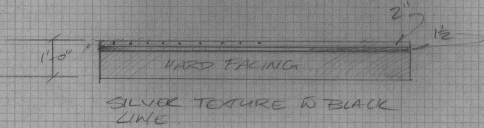
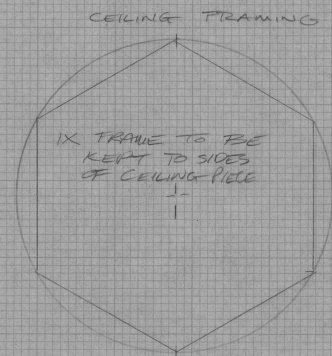
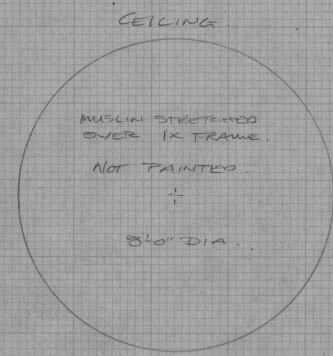
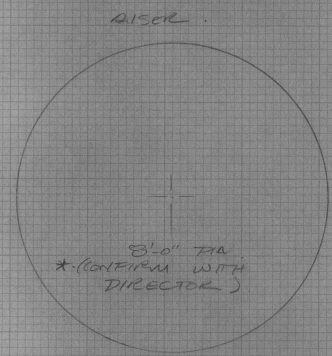
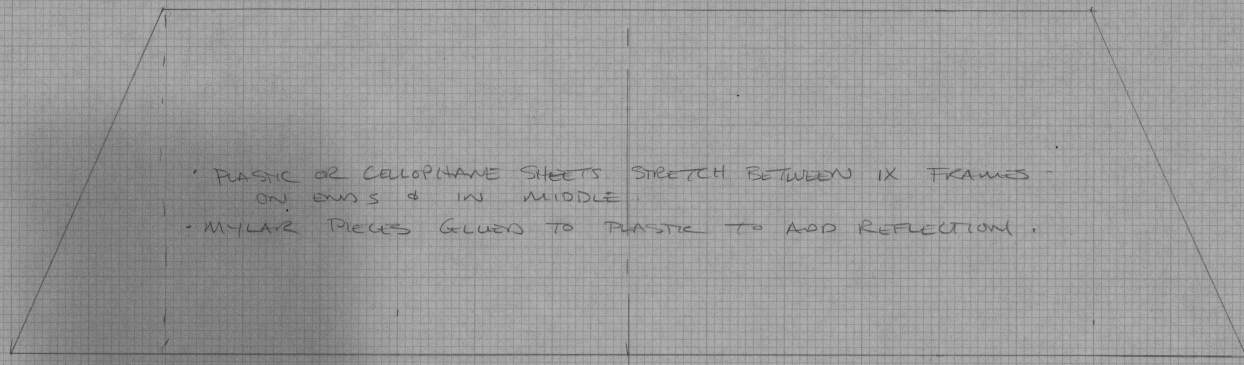


• PLASTIC COVERS OVER  
RAKED PLATFORM &  
RAMP.

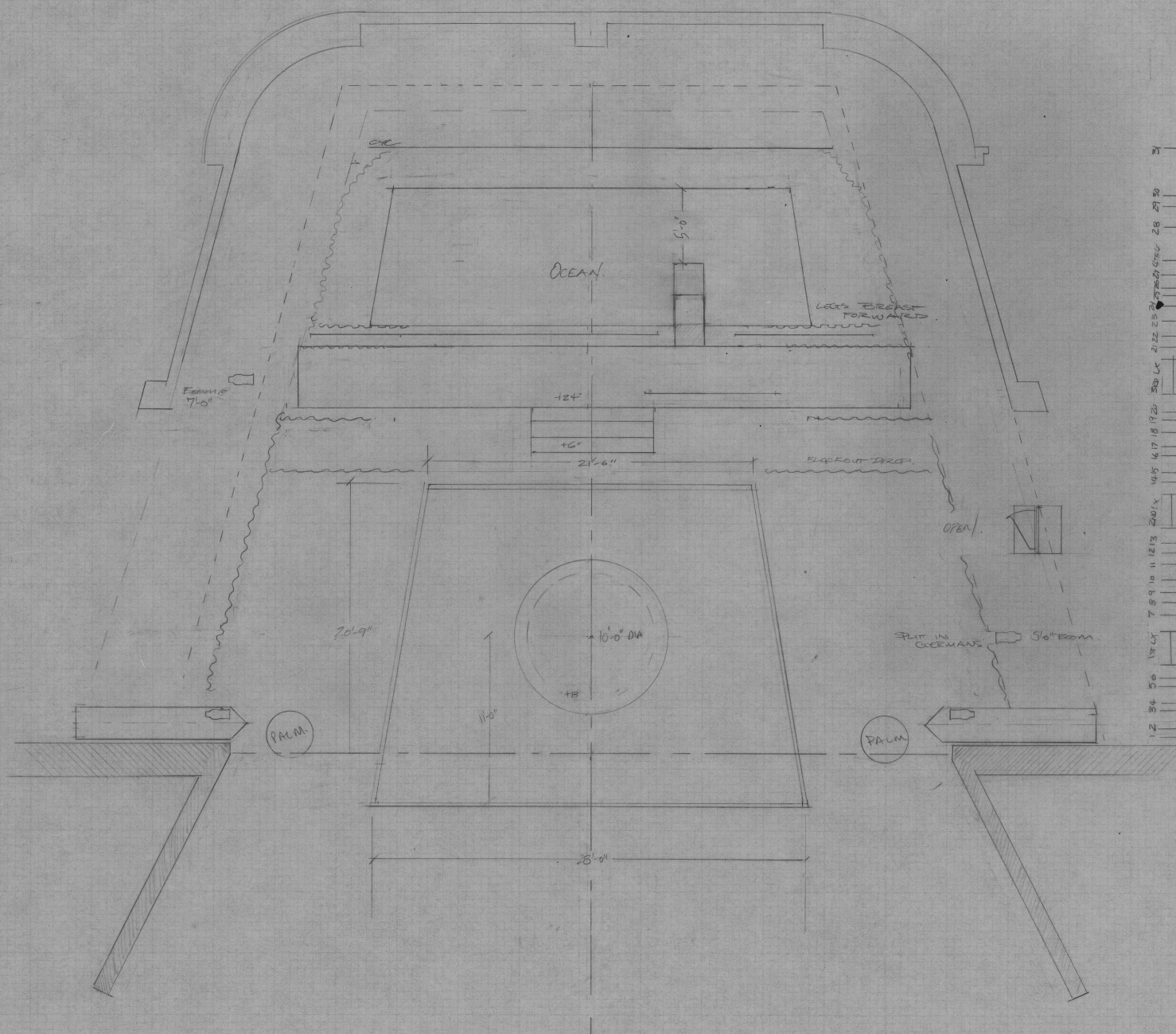


• 2' 0" PLATFORM RUNS OFF BACK OF  
MAIN PLATFORM  
• 2' 0" PLATFORM RAKED TO MATCH  
15° SLOPE OF PLASTIC.

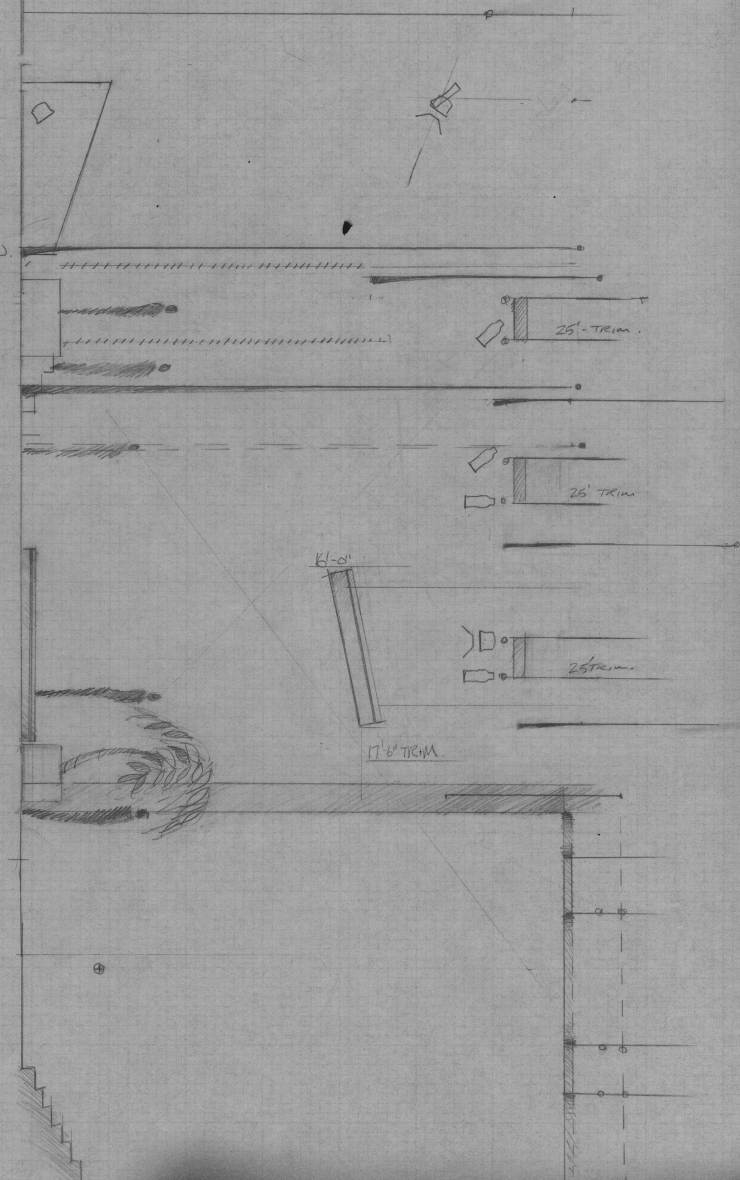
\* • ACTOR SET ON PLATFORM BEHIND BLACKOUT DRAPE.



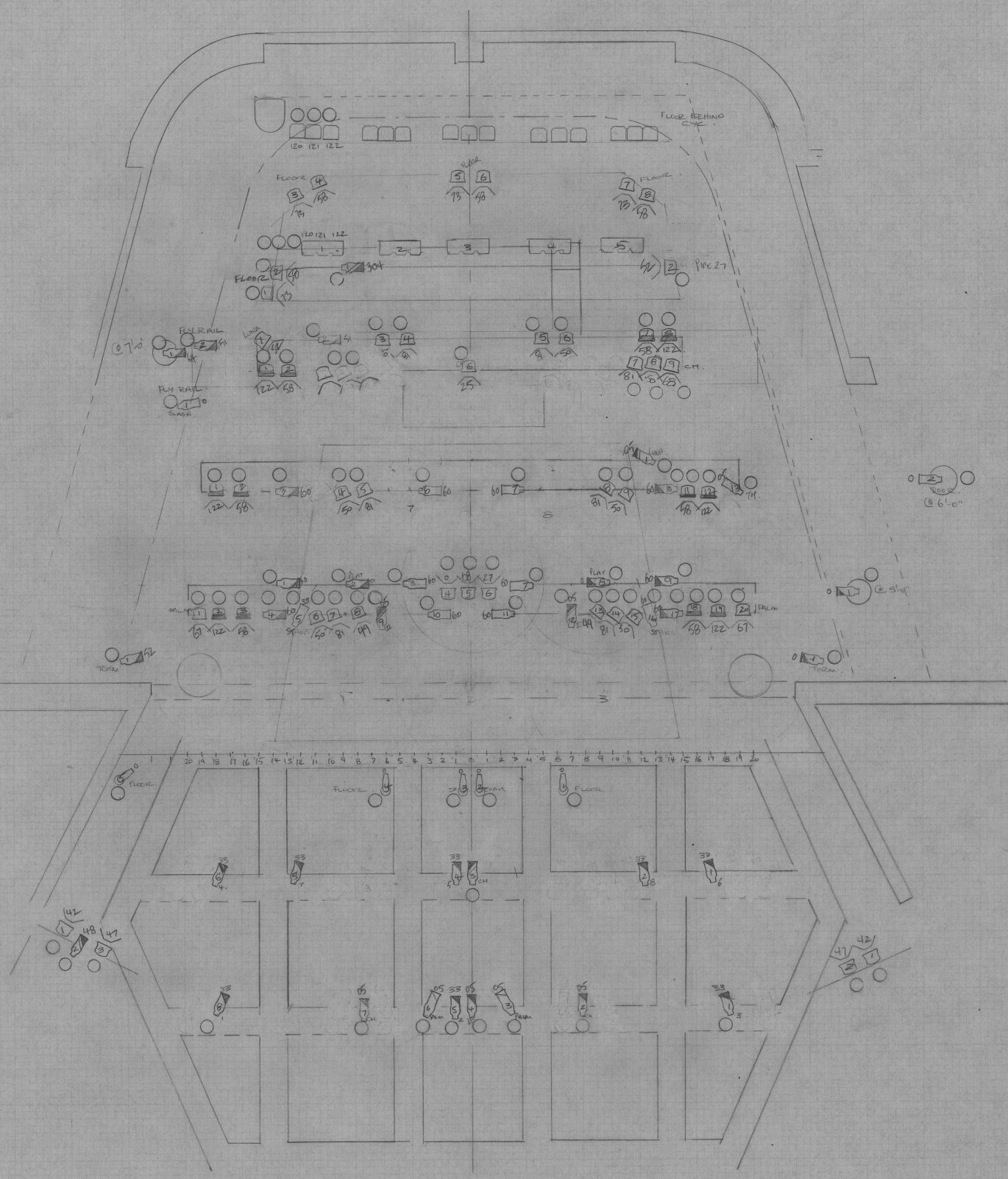
SEDUCED.  
• ELEVATIONS - REVISED JAN 01 99  
SCALE: 1/4" = 1' 0"  
DIL. R. MACDONALD.  
R. LUMSDEN.  
3/initial



- 27 CTC
- 26
- 25
- 24
- 23
- 22
- 21
- 20
- 19
- 18
- 17
- 16
- 15
- 14
- 13
- 12
- 11
- 10
- 9
- 8
- 7
- 6
- 5
- 4
- 3
- 2
- 1



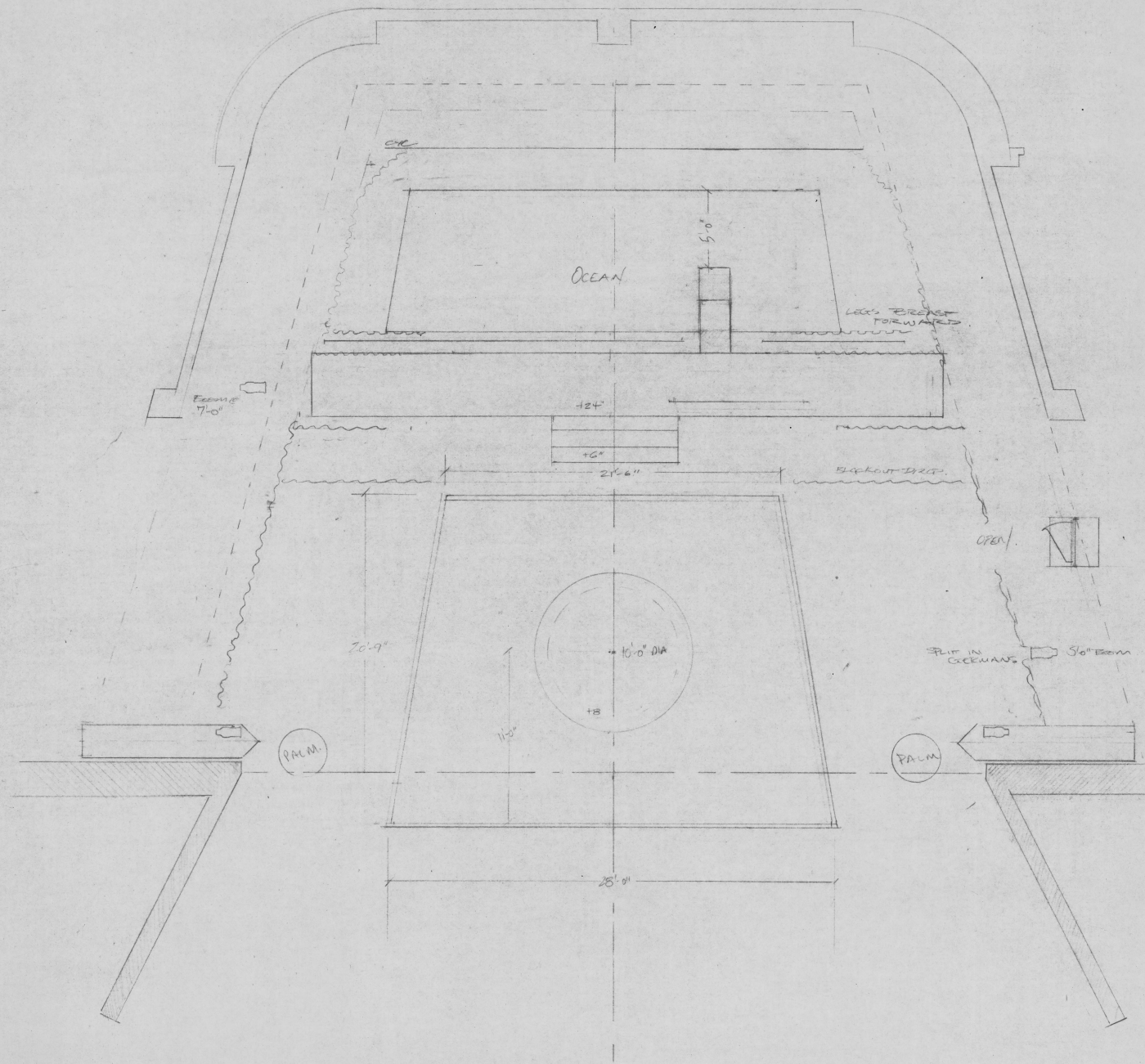
SEDUCED BY SAM SHEPPARD.  
 NEPTUNE THEATRE - STUDIO SEASON.  
 GROUNDPLAN REVISED FEB 09 '97.  
 SCALE 1/4" = 1'-0"  
 B. M. DeDONATO.  P. C. M. SPEN



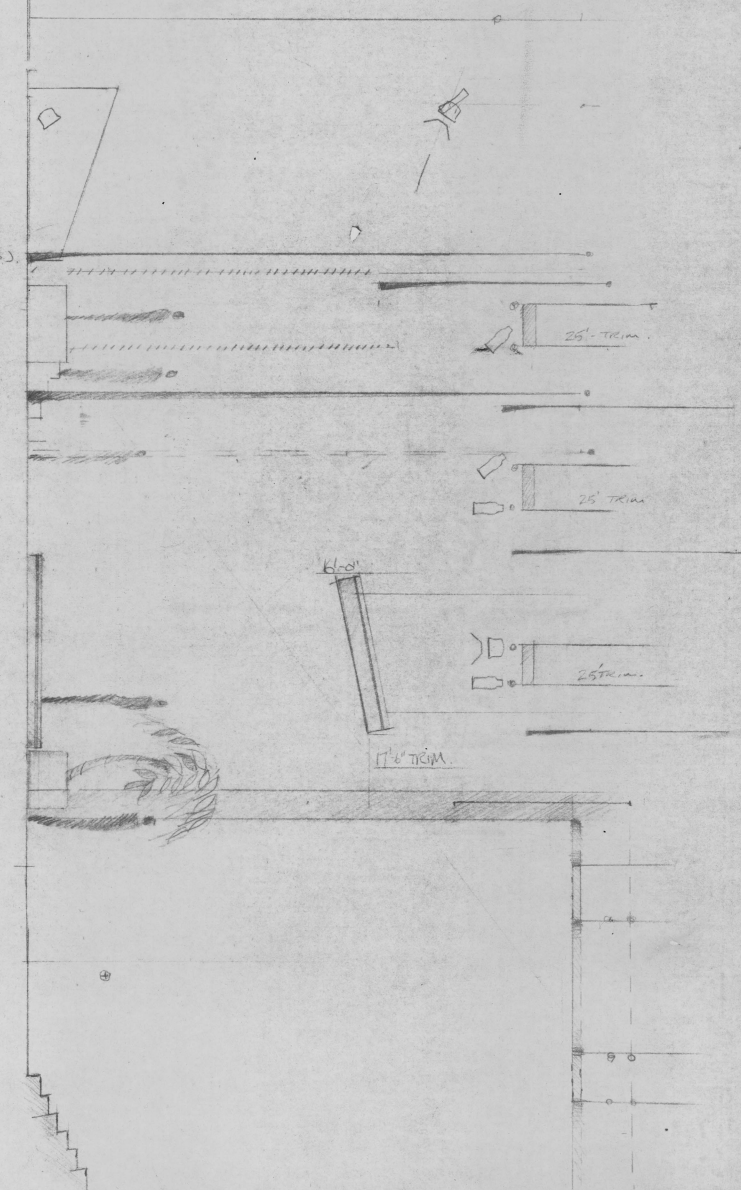
**LEGEND**

|  |                    |    |        |
|--|--------------------|----|--------|
|  | ALTMAN 360 Q 17'   | 6  |        |
|  | ALTMAN 360 Q 27'   | 25 |        |
|  | ALTMAN 360 Q 37'   | 12 |        |
|  | BARREL REPAIRES    | 2  | INSIDE |
|  | PAT 123            | 5  |        |
|  | STRAND 6' FIES 223 | 12 | SIR    |
|  | STRAND 6' FIES     | 39 | GR     |
|  | FLY CYC            |    |        |
|  | IRIS GROUNDROW     |    |        |

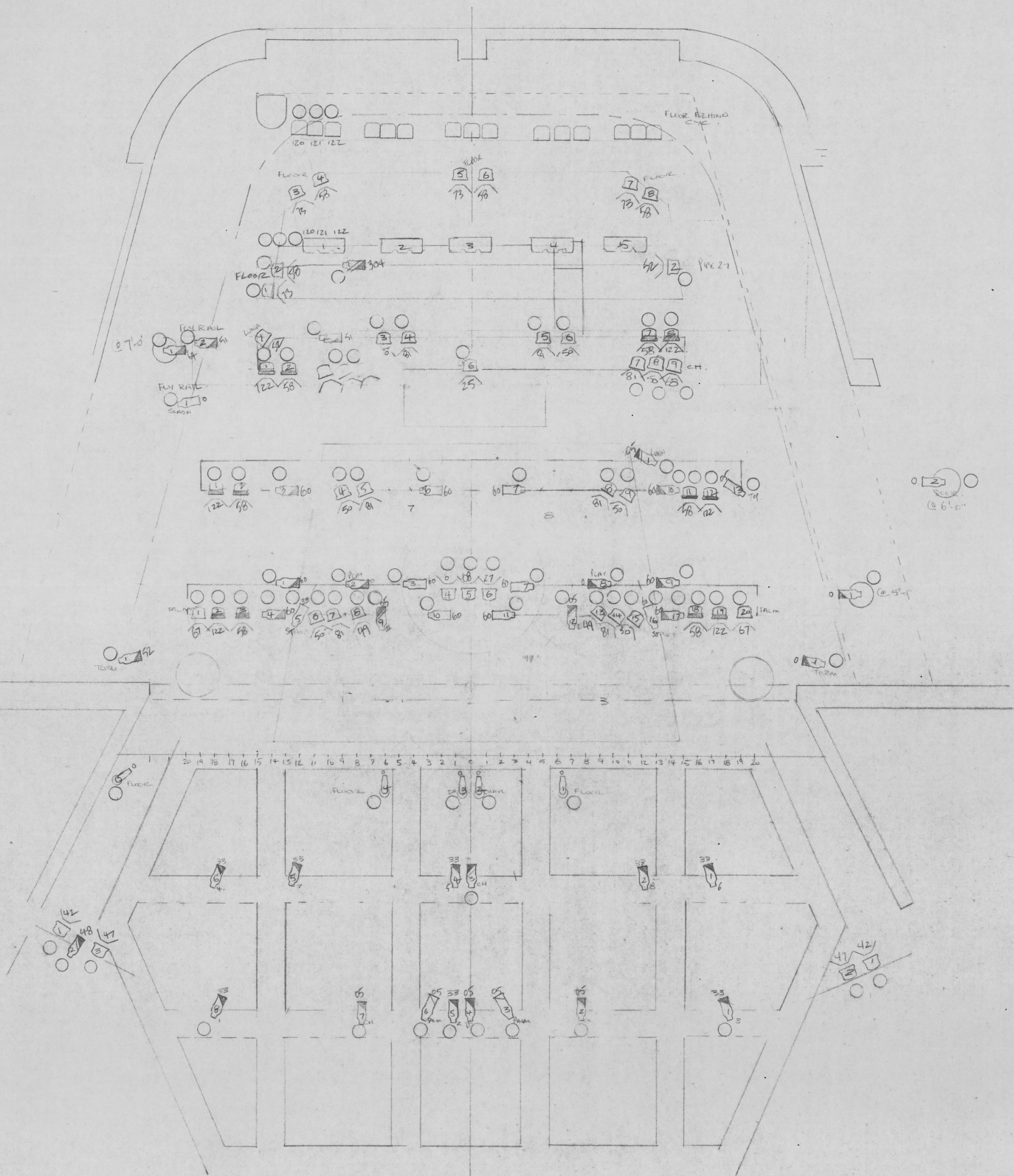
SEDUCED. SAM SHEPPARD  
 NEPTUNE THEATRE - STUDIO SEASON  
 LIGHTING PLOT  
 SCALE: 1/4" = 1'-0"  
 DIR: B MACDONALD  
 DES: B BLOMSTEN  
 FEB 13 '96



- 21 C/C
- 20 29 30
- C/C L.V.
- LEGS (BREAST FORWARDED)
- VERTICAL BORDER
- 20 L.V.
- 19 20
- 18 19
- 17 18
- 16 17
- 15 16
- 14 15
- 13 14
- 12 13
- 11 12
- 10 11
- 9 10
- 8 9
- 7 8
- 6 7
- 5 6
- 4 5
- 3 4
- 2 3
- 1 2

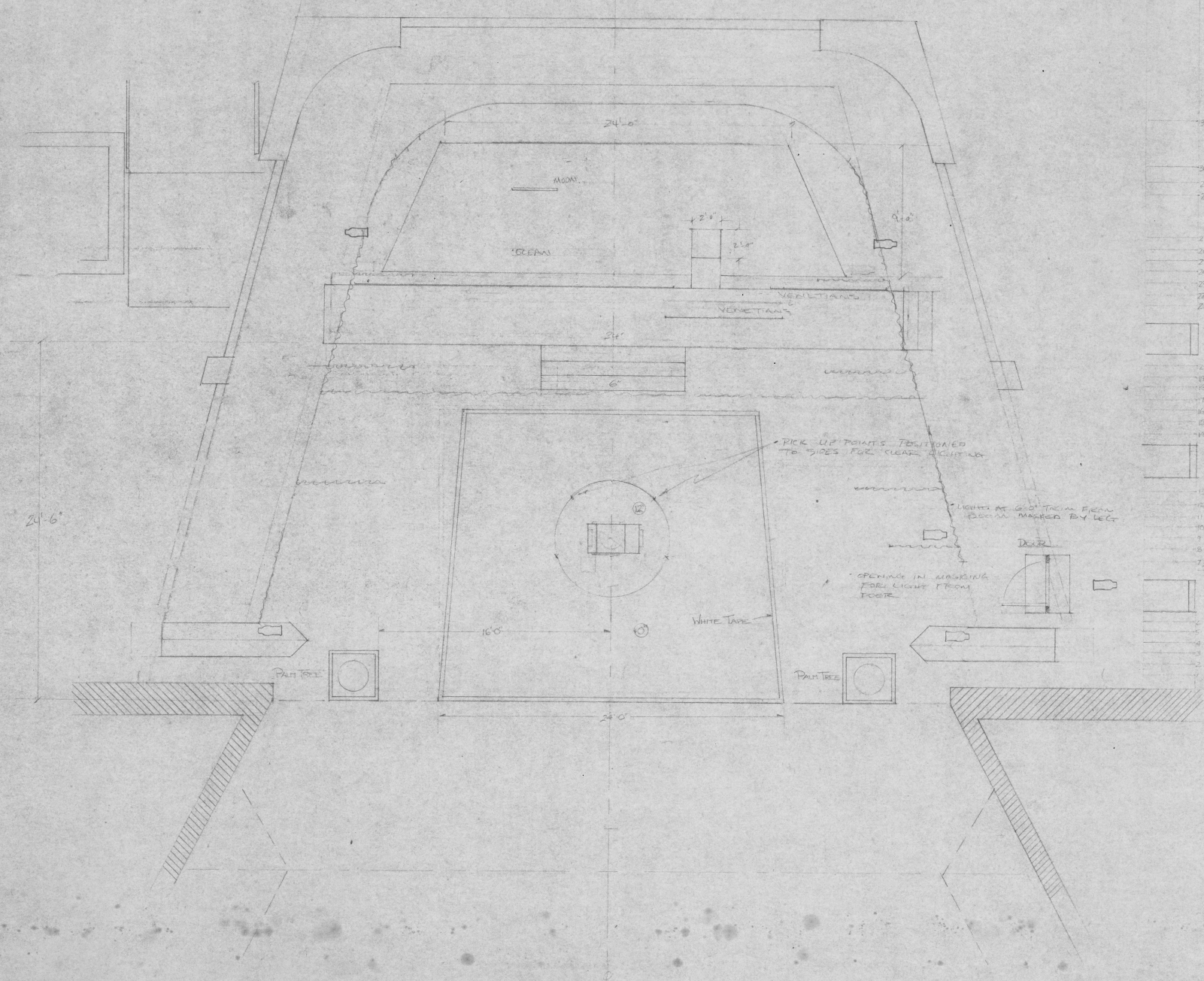


SEDUCED BY SAM SHEPARD  
 NEPTUNE THEATRE - STUDIO SEASON  
 GROUNDPLAN REVISED FEB 09 '97.  
 SCALE 1/4" = 1'-0"  
 B. MACDONALD P. CAMPBELL

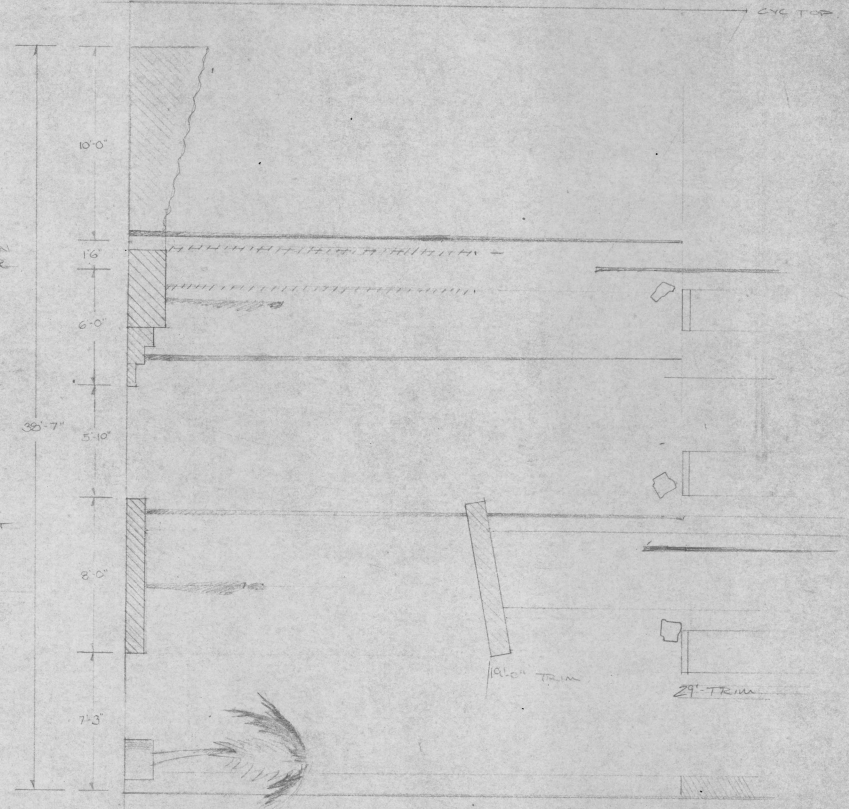


| LEGEND |                     |          |    |
|--------|---------------------|----------|----|
|        | ALTMAN              | 300 Q 17 | 6  |
|        | ALTMAN              | 300 Q 27 | 25 |
|        | ALTMAN              | 300 Q 37 | 12 |
|        | TABLETOP FIXTURES   |          | 2  |
|        | PAT 123             |          | 5  |
|        | STRAND 6' FILES 223 |          | 12 |
|        | STRAND 6' FILES     |          | 39 |
|        | FAIR CYC            |          |    |
|        | IRIS GROUNDGLASS    |          |    |

SEDUCED. SAM SHEPPARD  
 NEPTUNE THEATRE - STUDIO SEASON  
 LIGHTING PLOT  
 SCALE: 1/4" = 1'-0"  
 DIR: B. MACDONALD  
 DES: B. LINDSEY  
 FEB 13 '96



- 31
- 30
- 29
- 28 MOON.
- 27
- 26
- 25
- 24
- 23 LEGS
- 22 VENETIAN
- 21 BORDER
- 20
- 19
- 18
- 17 BUNKER
- 16
- 15
- 14
- 13
- 12
- 11 SKYLIGHT
- 10 BORDER
- 9
- 8 LEG
- 7 SKYLIGHT
- 6
- 5
- 4
- 3
- 2
- 1



SEDUCED - BY SAM SHEPPARD  
 NEPTUNE THEATRE - STUDIO SEASON - DUNAL STAGE  
 GROUND PLAN  
 SCALE 1/2" = 1'-0"  
 DIR. B. MACDONALD.

|      |                 |
|------|-----------------|
| PG 1 | OCT 28 '96      |
| OF 2 | DES. B. LUMSDEN |



22'-6" (MAX)

9'-0" (MAX)  
x 2

BL.

16'-0"

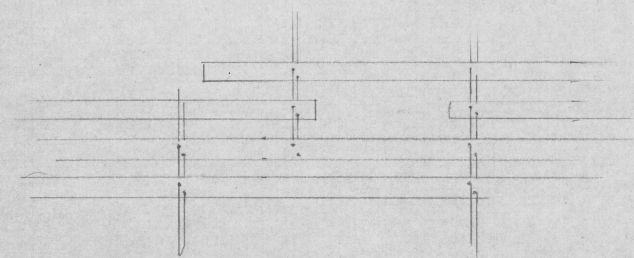
NOTE.

\* 8'-0" SECTION, IN  
SAME STYLE AS  
SL PIECE,  
FILLS IN  
GAP 2'-0"  
IN FRONT OF  
MAIN BODY OF  
VENETIAN.

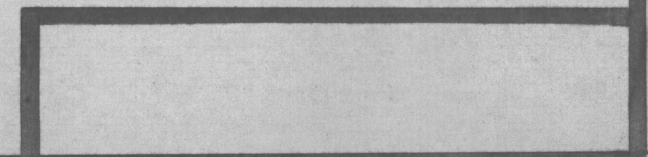
APPROXIMATE  
8'-0"  
OPENING.

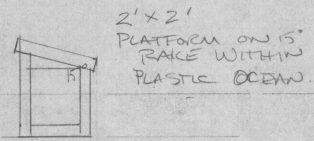
POSITION OF  
PLATFORM

\* ANGLED 3" BLIND  
WITH 5" STACING

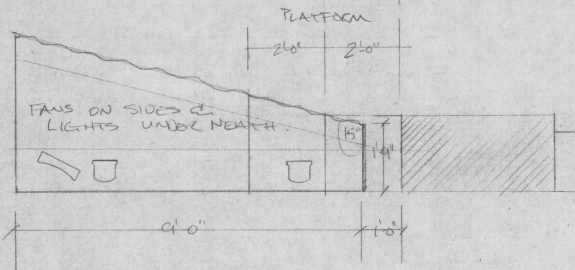


BLINDS ARE NON PRACTICAL.



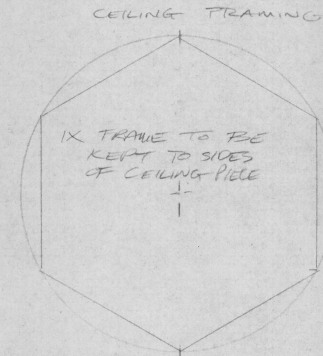
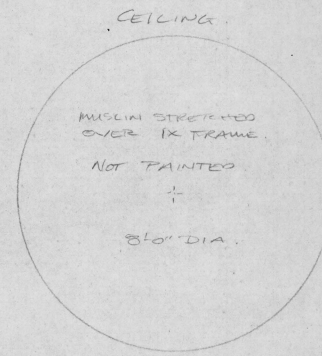
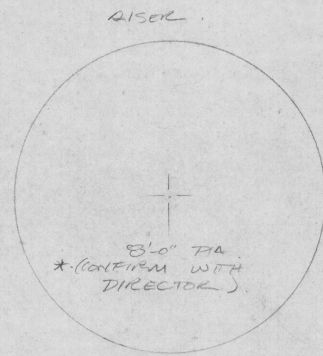
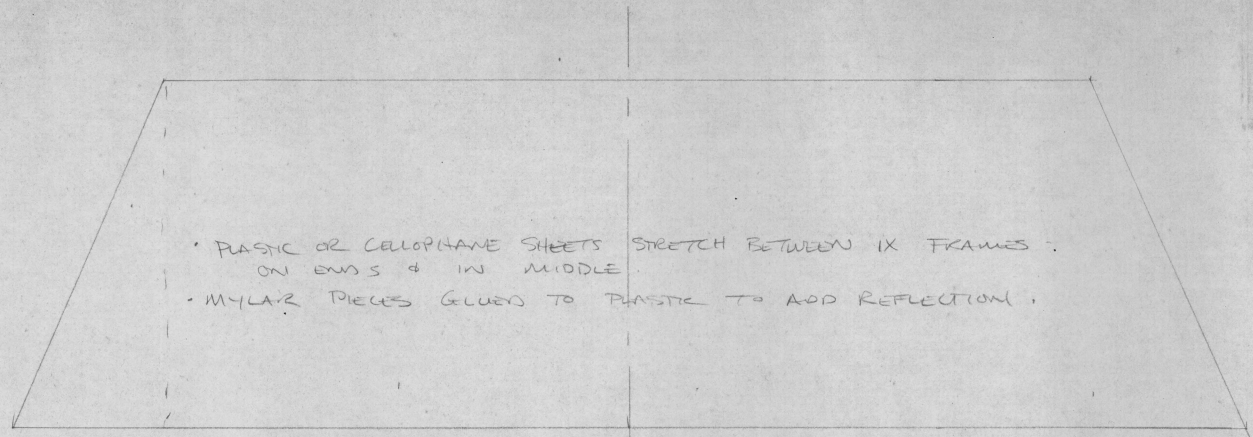


• PLASTIC COVERS OVER  
RAKED PLATFORM &  
RAMP.



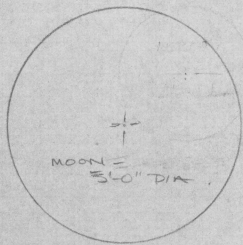
• 2'0" PLATFORM RUNS OFF BACK OF  
MAIN PLATFORM  
• 2'0" PLATFORM RAKED TO MATCH  
15° SLOPE OF PLASTIC.

\* • ACTOR SET ON PLATFORM BEHIND BLACKOUT DRAPE

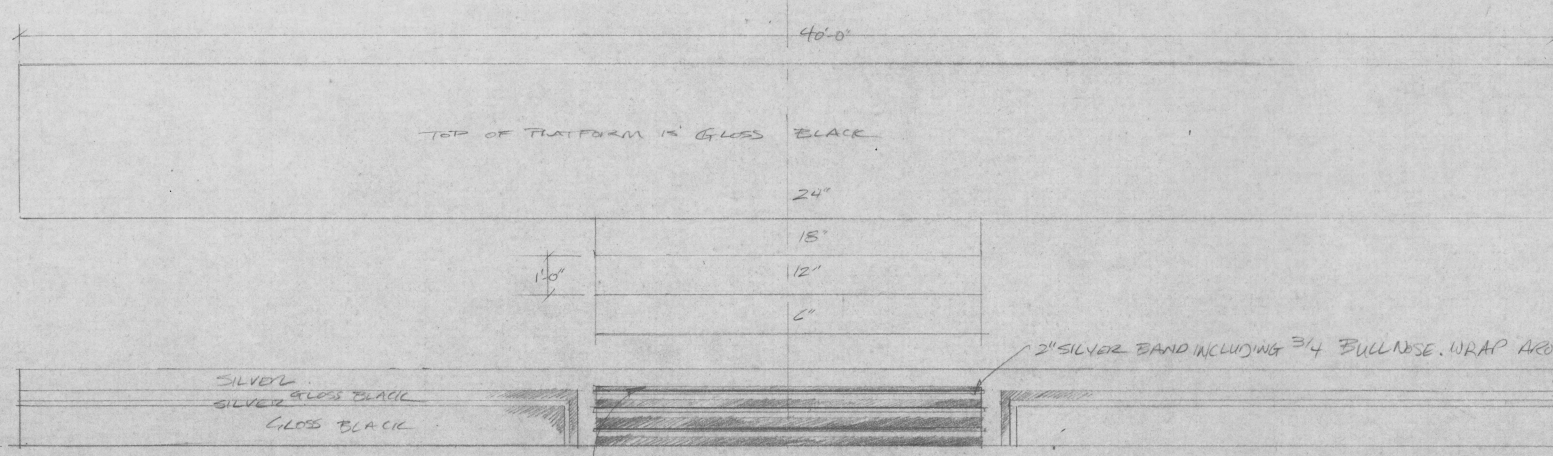
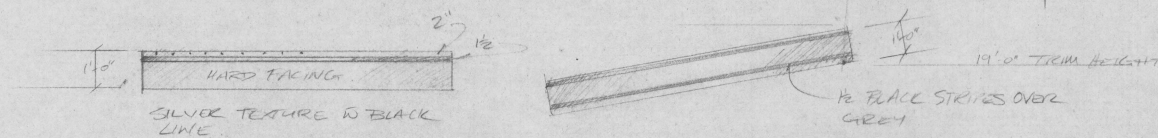


MOON.

• MOON TO BE RENDERED AS  
REALISTICALLY AS POSSIBLE.  
IRRADIANCE WOULD BE  
DESIRABLE.  
• DISCUSS WITH DESIGNER.



SCALE: 1" = 1'-0"



SEDUCED.  
\* ELEVATIONS - - REVISED JAN 01 99  
SCALE: 1/4" = 1'-0"  
PIE, B MACDONALD. R LUMSDEN.  
B JAMES