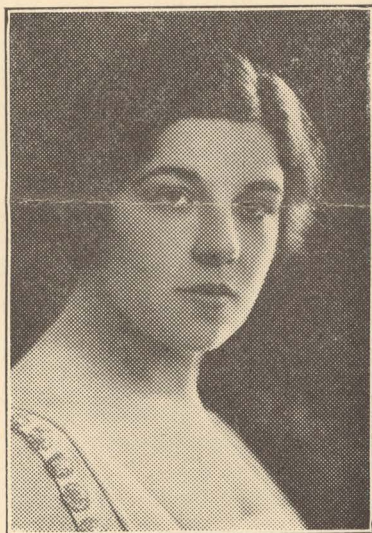
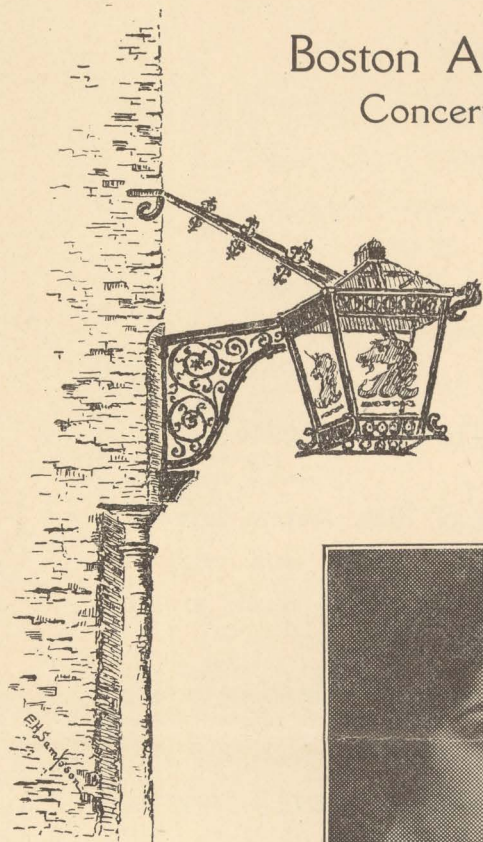


Boston Athletic Association
Concert Season 1921-1922



X

Miss Jeanne Gordon, Prima Donna Contralto
Metropolitan Opera Company
and the Boston Symphony Ensemble
in the Gymnasium at four o'clock
on Sunday afternoon, March 19, 1922

Special Announcement

With the presentation of Miss Jeanne Gordon we will complete our concert season, and wish to thank those who have contributed so much to the success of our entertainments.

We hope members will limit themselves to one lady guest each.

ENTERTAINMENT COMMITTEE

March 20, 1922

Jeanne Gordon, Prima Donna Contralto,

Metropolitan Opera Company

Margaret Hughes, Accompanist

with the

Boston Symphony Ensemble

Augusto Vannini, Conductor

H. Sauvlet, Concert-Master
R. Gunderson, First Violin
W. Krafft, First Violin
H. Warner, Second Violin
C. van Wynbergen, Viola
J. Langendoen, Violoncello
O. Ludwig, Bass
A. DeVoto, Piano

B. Amarena, Flute
H. Stanislaus, Oboe
P. Mimart, Clarinet
G. Mager, Trumpet
G. Wendler, Horn
R. Kenfield, Trombone
A. Laus, Bassoon
S. Neumann, Timpani

Program

1. Overture "Mignon" Thomas
2. (a) Traume Wagner
(b) La Guitarre Moszkowsky
3. Re dell abisso from "Masked Ball" Verdi
MISS GORDON WITH ORCHESTRA
4. Fantasie "Faust" Gounod
5. Aria from "La Mort de Jeanne d'Arc" Bemberg
MISS GORDON WITH ORCHESTRA
- ~~X~~ 6. Dance of the Hours from "La Gioconda" Ponchielli
7. (a) Carnaval Foudrain
(b) Clair de Lune Szulc
(c) By a Lovely Forest Pathway Charles Griffes
(d) Faltering Dusk Walter Kramer
MISS GORDON WITH PIANO

(Mason & Hamlin Piano used)

Special Feature Film of the B. A. A. shown at 3.30 P. M.,
March 26

Final Attraction

Sunday afternoon, March 26th, at 3.30, we will present a Motion Picture Entertainment and use as a "Feature" the new film showing the various activities of the Boston Athletic Association. All active, non-resident, athletic, associate, Army and Navy, and boy members, together with their families are invited.