

mute

3 EWD

①

believin

held in +L

②

③

④

⑤

boatman :

OPEN

VOICE CADENZA

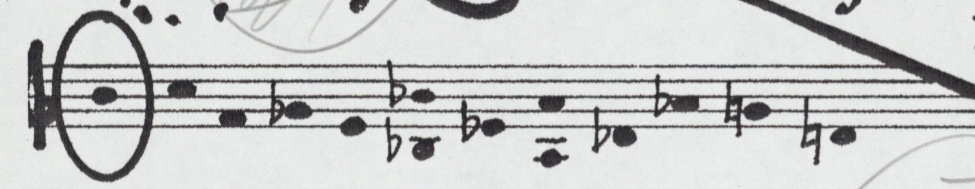
not dot



held. in the last part of the earth plane:

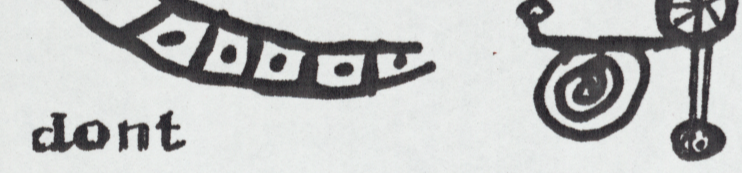
soft fire
they should be contemplated as such:
erotically playful movements
unfolding of love

I have crossed by the
grace of the
boatman:



why not dot

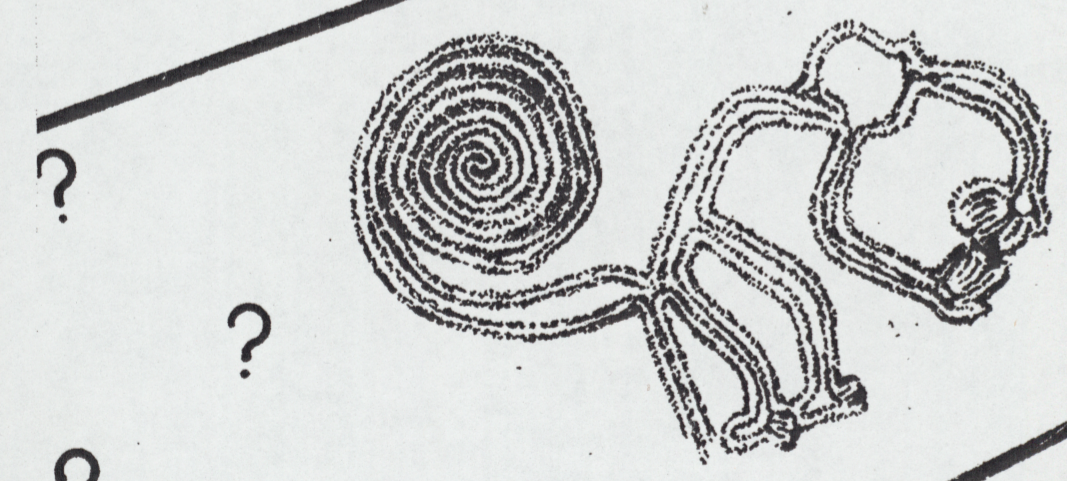
it
nowever.



whether or not

why

not



zedē

pedē

dum

crum flum

plum song

believing

haveth
high morning

in an
unbroken
radiance



break

dark of light

from



VOICE CADENZA



FL. *
OB.
TPT.
(Harmon)
CLAR.
GTR.
*optional
instruments

slow slam

giving

half time for leaf

hellwater

let leaf

hālfē leng

halfer punner pie man

shlom

itme

leaf me a peep

and see



brighter

lifeleng

flyprong

lef leave

op

öss

söch tight

black

clack

shepsh

ferfechenpuddle ma

sack sitter

jillysillytuppence

bowl of night

make 6

7

8

9

10

11

prayer...

monumental
mime rime to to

halving but by a -

3

2

mystery

Life • love •

little laughing....

toppot

.thought.

SOLO INSTRUMENT
and/or wordless vocal



*

5

6

7

8

9

10

11

