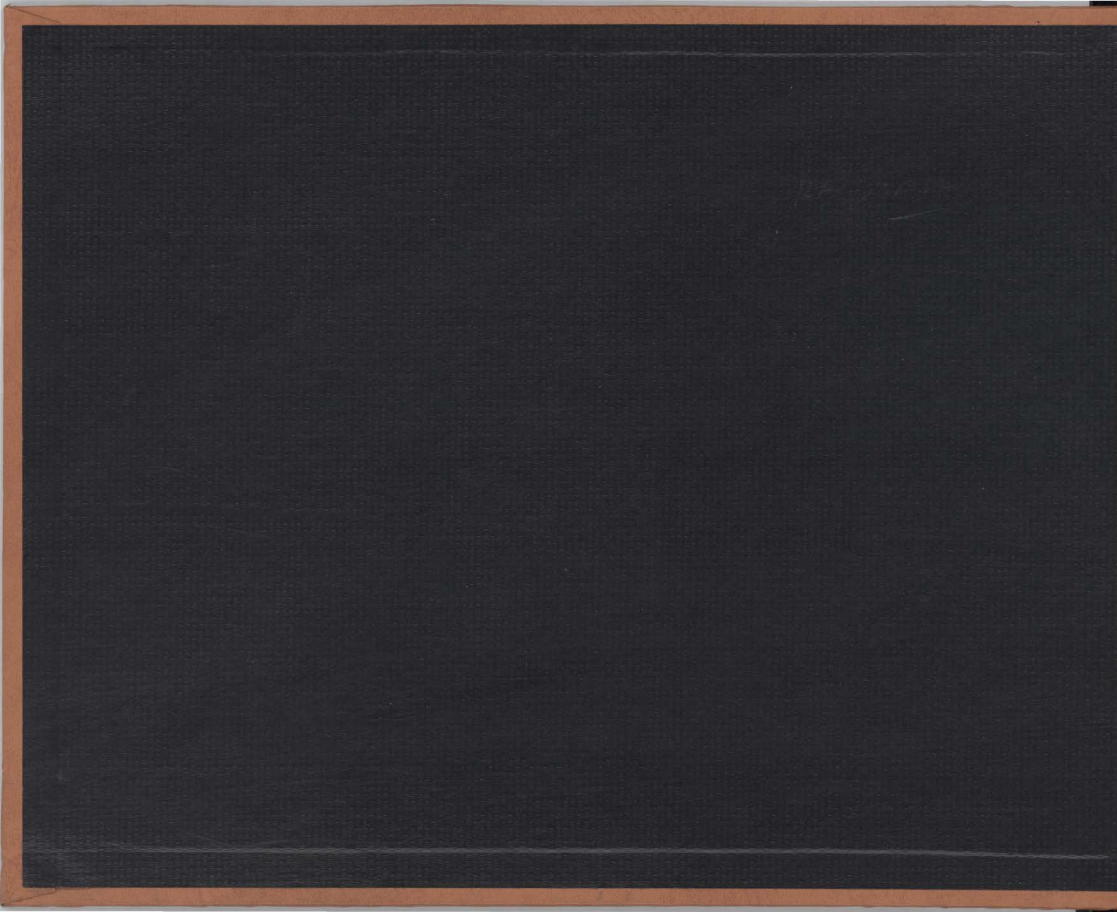


Photographs







OLD BLOCKHOUSE, FORT POINT, LIVERPOOL, N. S.

1556

(SEE BACK OF PRINT FOR DETAIL)



LIVERPOOL & MILTON TRAIN TURNING OFF MAIN STREET TO DOCKS
1898



LIVERPOOL & MILTON TRAIN c ON FORE STREET, FEB. 18'98.

155B



MAIN STREET, LIVERPOOL, 1891.

1669

THE HOTEL WAS ON THE SITE OF TOWN HALL
(SEE BACK OF PRINT FOR DETAIL)



OLD TAVERN, FORT POINT, LIVERPOOL

1560

BUILT ABOUT 1763



156
THE CAPTAIN BARTLETT BRADFORD HOUSE
FORT POINT, LIVERPOOL
BUILT ABOUT 1767

(SEE BACK OF PRINT FOR DETAIL)



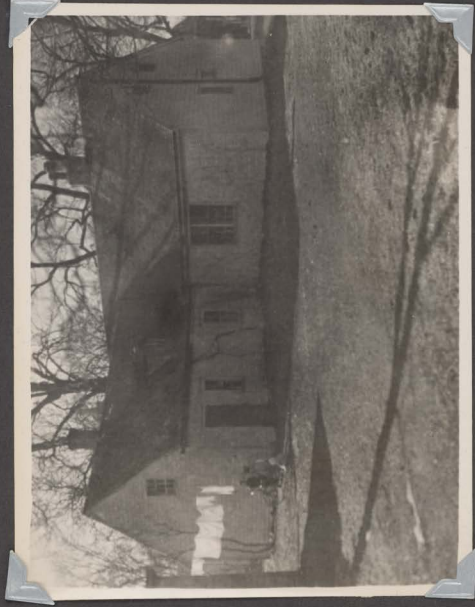
LEFT, HOME E OF
JOSEPH COLLENS,
FOUNDER OF THE
FAMOUS COLLENS
FAMILY OF
LIVERPOOL, L.

CENTRE, HOUSE BUILT, 1804,
BY ANDREW DE WOLFE

156Q



SIMEON PERKINS HOUSE, BUILT 1766



PHOTOS
TAKEN IN
1947,
BEFORE
RENOVATION
BY N. S.
GOVERNMENT



OPENING CEREMONY, PEPERKINS HOUSE AND MUSEUM, 1957. 1965
T.H. RADDALL IS SPEAKING FOR QUEENS CO. HISTORICAL SOCIETY

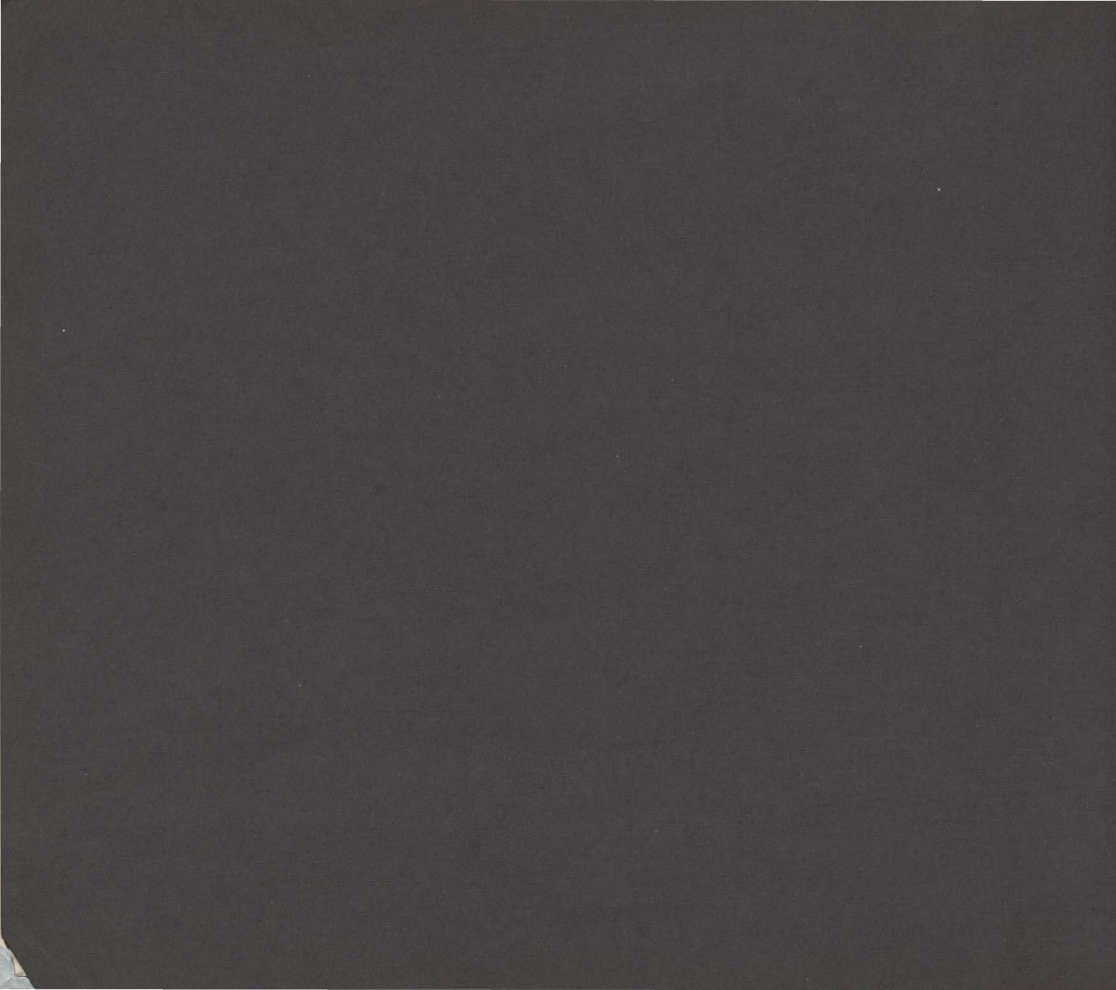


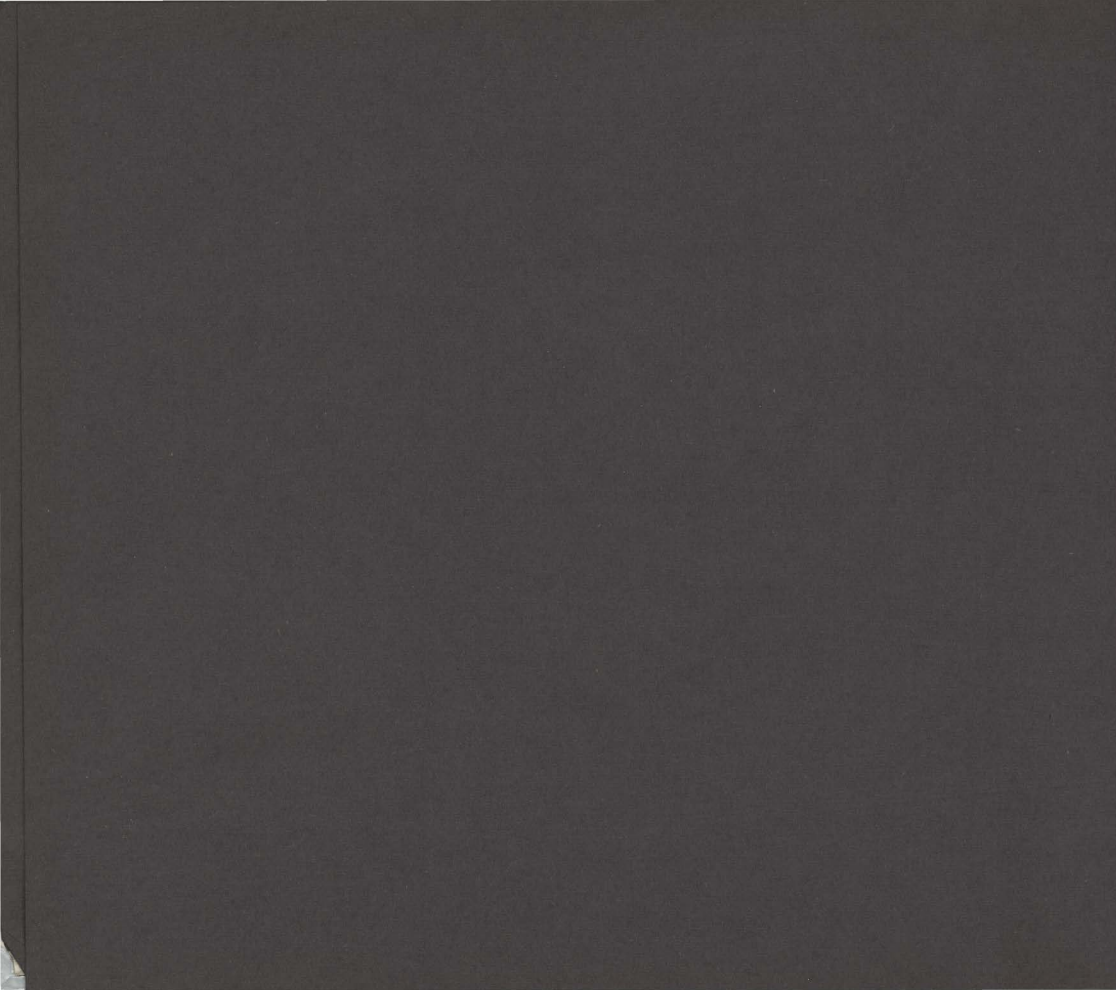
OPENING CEREMONY,
SIMEON PERKINS
HOUSE AND MUSEUM,
LIVERPOOL, 1957.

T.H. RADDALL
PRESENTS KEY
TO PREMIER
STANFIELD.



1503
CONGREGATIONAL CHURCH, MILTON, ABOUT 1898.
USED AS THE VILLAGE HALL, FOR DANCES, ETC., 1925 - 1947
TORN N DOWN ABOUT 1950.







GERMAN SUBMARINE NE U-889 SURRENDERS 12 MILES OFF SHELBURNE, 1567
May 13, 1945. FAIRMILEVILE LAUNCHES, FROM SHELBURNE NAVAL BASE, AT LEFT.
R.C.N. FRIGATE "BUCKINGHAM" IN OFFING, RIGHT.



BOARDING PARTY APPROACHING U-889



BOARDING U-889.

FAIRMILES FROM SHELBURNE MAINTAIN CLOSE WATCH.



SURRENDER OF U-889.
HOISTING THE BRITISH ENSIGN.



U-889 HEATHREADING FOR SHELburne HARBOR,
AFTER PART PART OF HER CREW HAD BEEN REMOVED
TO FAIRMILEVILLE AT LEFT.



PART OF U-889'S CREW UNDER GUARD ABOARD A FAIRMILE,
ENTERING SHELBURNE HARBOR, MAY 13, 1945.



IN IN SHELBURNE HARBOR. 1594
KORVETTEN-KAPITAN FRIEDRICH BREUECKER,
COMMANDER DER OF U-889.

