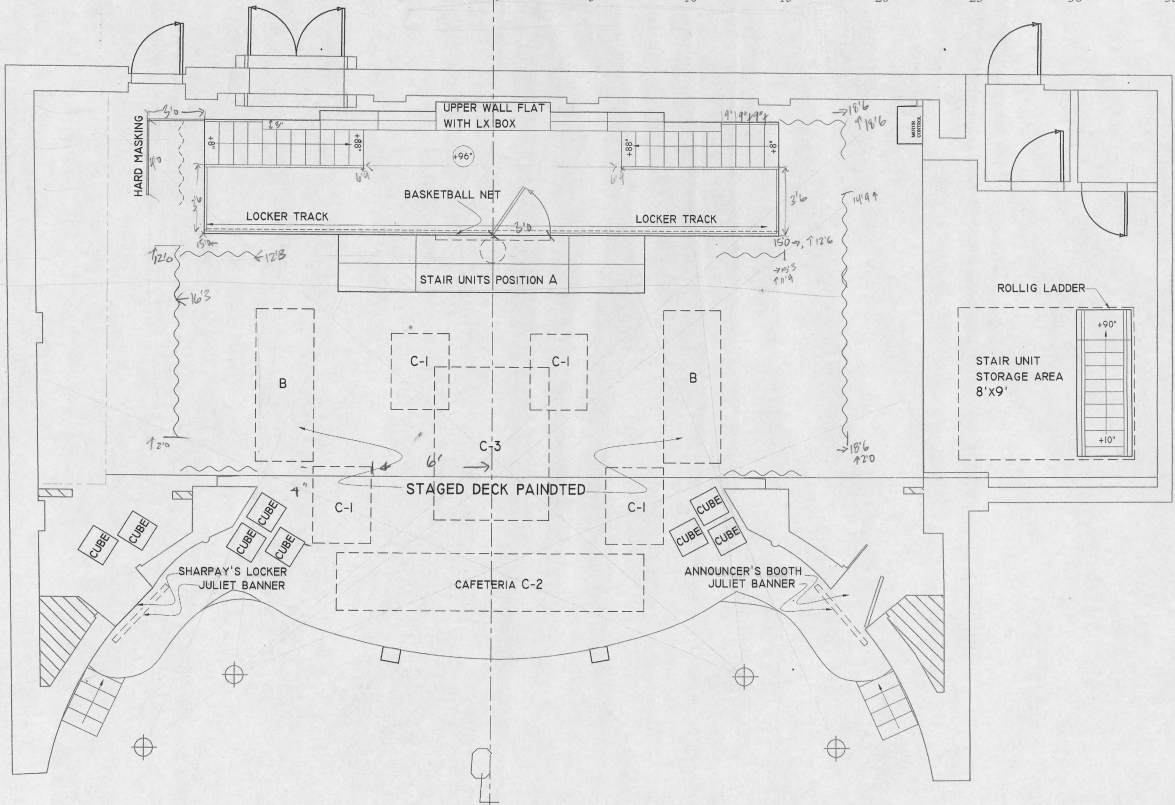
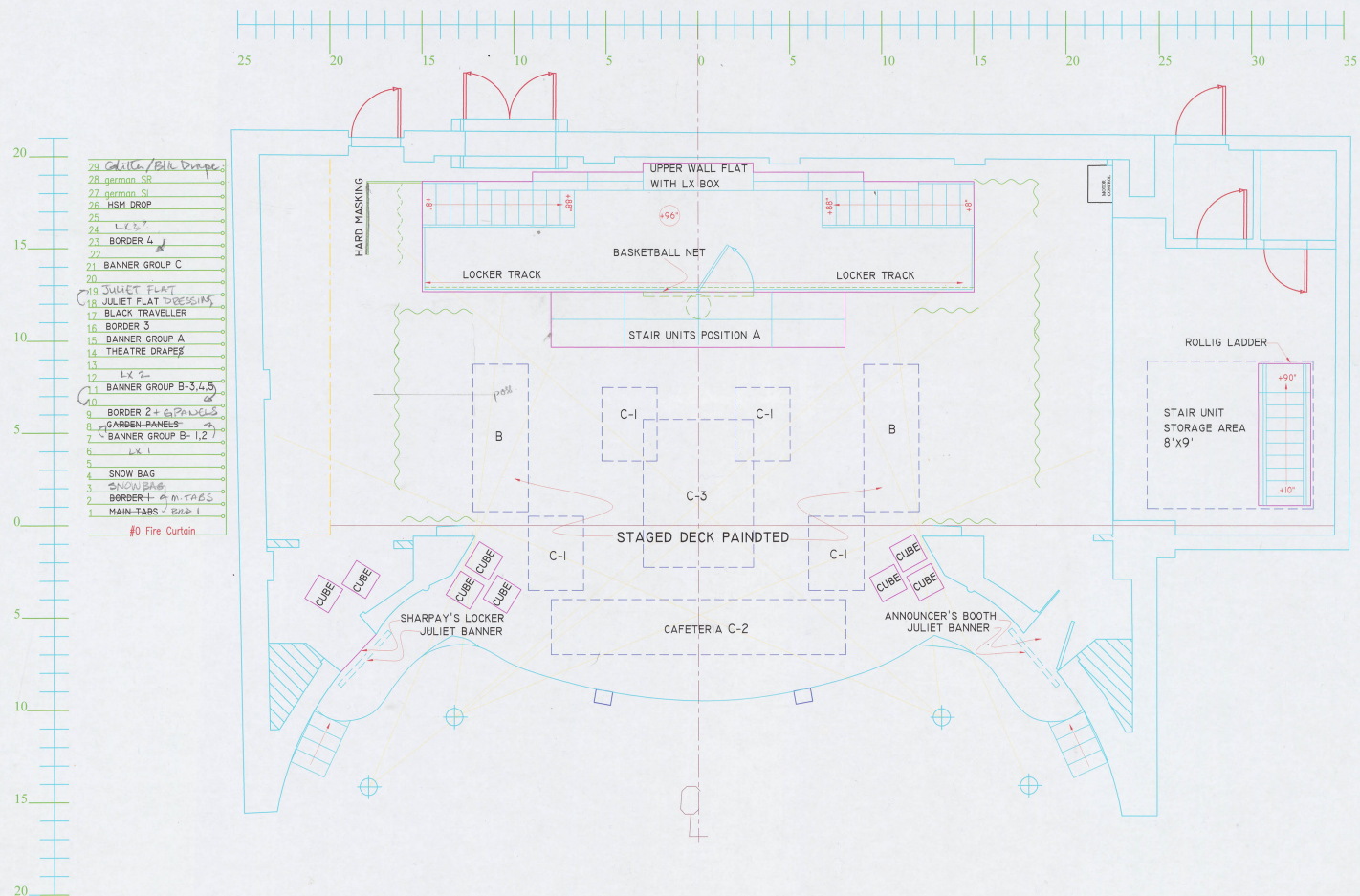


US deck: 12'6" ↑, 15'0" →
 front 15'0" ←
 Upper wall flat ↑ 18'0", 12'0" ←
 12'0" →

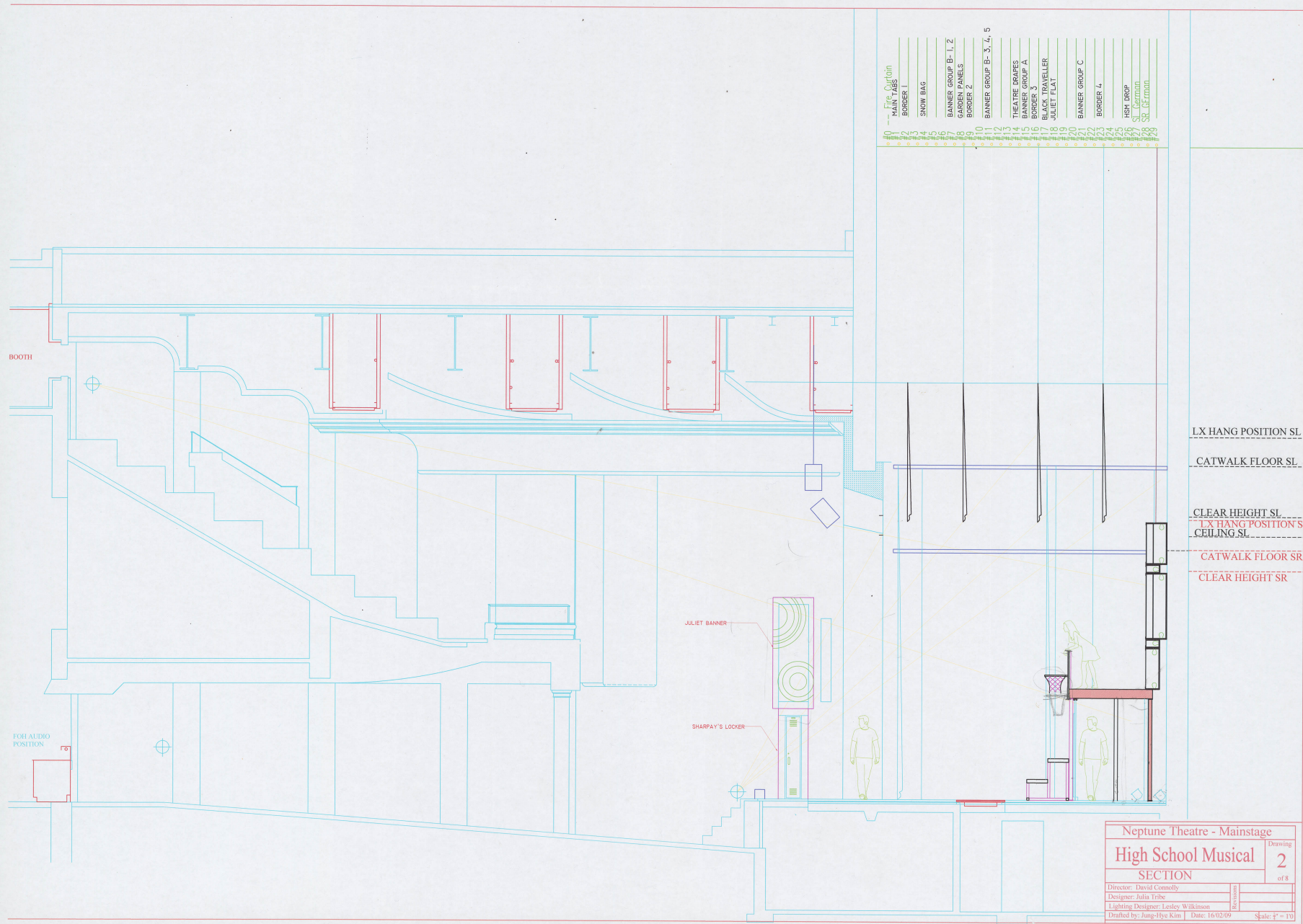
- 29
- 28 german SR
- 27 german SI
- 26 HSM DROP
- 25
- 24
- 23 BORDER 4
- 22
- 21 BANNER GROUP C
- 20
- 19
- 18 JULIET FLAT
- 17 BLACK TRAVELLER
- 16 BORDER 3
- 15 BANNER GROUP A
- 14 THEATRE DRAPES
- 13
- 12
- 11 BANNER GROUP B-3,4,5
- 10
- 9 BORDER 2
- 8 GARDEN PANELS
- 7 BANNER GROUP B-1,2
- 6
- 5
- 4 SNOW BAG
- 3 BORDER 1
- 2 MAIN TABS
- 1 #0 Fire Curtain



Neptune Theatre - Mainstage		Drawing
High School Musical		1
PLAN		of 8
Director: David Connolly		
Designer: Julia Tribe		
Lighting Designer: Lesley Wilkinson		
Drafted by: Jung-Hye Kim Date: 16/02/09 Scale: 1/4" = 1'0"		



- 29 Gilia/Bill Drape
 - 28 german SR
 - 27 german SI
 - 26 HSM DROP
 - 25
 - 24 LX 2
 - 23 BORDER 4
 - 22
 - 21 BANNER GROUP C
 - 20
 - 19 JULIET FLAT
 - 18 JULIET FLAT DRAPINGS
 - 17 BLACK TRAVELLER
 - 16 BORDER 3
 - 15 BANNER GROUP A
 - 14 THEATRE DRAPES
 - 13
 - 12 LX 2
 - 11 BANNER GROUP B-3,4,5
 - 10
 - 9 BORDER 2 + 6 PANELS
 - 8 GARDEN-PANELS
 - 7 BANNER GROUP B-1,2
 - 6
 - 5 LX 1
 - 4
 - 3 SNOW BAG
 - 2 BORDER 1 + MAIN-TABS
 - 1 MAIN-TABS / BIRD 1
- #0 Fire Curtain



- 0 --- Fire Curtain
- 1 --- PAIR TABS
- 2 --- BORDER 1
- 3 --- SNOW BAG
- 4 --- BORDER 2
- 5 --- BORDER 3
- 6 --- BORDER 4
- 7 --- BORDER 5
- 8 --- BORDER 6
- 9 --- BORDER 7
- 10 --- BORDER 8
- 11 --- BORDER 9
- 12 --- BORDER 10
- 13 --- BORDER 11
- 14 --- BORDER 12
- 15 --- BORDER 13
- 16 --- BORDER 14
- 17 --- BORDER 15
- 18 --- BORDER 16
- 19 --- BORDER 17
- 20 --- BORDER 18
- 21 --- BORDER 19
- 22 --- BORDER 20
- 23 --- BORDER 21
- 24 --- BORDER 22
- 25 --- BORDER 23
- 26 --- BORDER 24
- 27 --- BORDER 25
- 28 --- BORDER 26
- 29 --- BORDER 27
- 30 --- BORDER 28
- 31 --- BORDER 29
- 32 --- BORDER 30
- 33 --- BORDER 31
- 34 --- BORDER 32
- 35 --- BORDER 33
- 36 --- BORDER 34
- 37 --- BORDER 35
- 38 --- BORDER 36
- 39 --- BORDER 37
- 40 --- BORDER 38
- 41 --- BORDER 39
- 42 --- BORDER 40
- 43 --- BORDER 41
- 44 --- BORDER 42
- 45 --- BORDER 43
- 46 --- BORDER 44
- 47 --- BORDER 45
- 48 --- BORDER 46
- 49 --- BORDER 47
- 50 --- BORDER 48
- 51 --- BORDER 49
- 52 --- BORDER 50
- 53 --- BORDER 51
- 54 --- BORDER 52
- 55 --- BORDER 53
- 56 --- BORDER 54
- 57 --- BORDER 55
- 58 --- BORDER 56
- 59 --- BORDER 57
- 60 --- BORDER 58
- 61 --- BORDER 59
- 62 --- BORDER 60
- 63 --- BORDER 61
- 64 --- BORDER 62
- 65 --- BORDER 63
- 66 --- BORDER 64
- 67 --- BORDER 65
- 68 --- BORDER 66
- 69 --- BORDER 67
- 70 --- BORDER 68
- 71 --- BORDER 69
- 72 --- BORDER 70
- 73 --- BORDER 71
- 74 --- BORDER 72
- 75 --- BORDER 73
- 76 --- BORDER 74
- 77 --- BORDER 75
- 78 --- BORDER 76
- 79 --- BORDER 77
- 80 --- BORDER 78
- 81 --- BORDER 79
- 82 --- BORDER 80
- 83 --- BORDER 81
- 84 --- BORDER 82
- 85 --- BORDER 83
- 86 --- BORDER 84
- 87 --- BORDER 85
- 88 --- BORDER 86
- 89 --- BORDER 87
- 90 --- BORDER 88
- 91 --- BORDER 89
- 92 --- BORDER 90
- 93 --- BORDER 91
- 94 --- BORDER 92
- 95 --- BORDER 93
- 96 --- BORDER 94
- 97 --- BORDER 95
- 98 --- BORDER 96
- 99 --- BORDER 97
- 100 --- BORDER 98
- 101 --- BORDER 99
- 102 --- BORDER 100
- 103 --- BORDER 101
- 104 --- BORDER 102
- 105 --- BORDER 103
- 106 --- BORDER 104
- 107 --- BORDER 105
- 108 --- BORDER 106
- 109 --- BORDER 107
- 110 --- BORDER 108
- 111 --- BORDER 109
- 112 --- BORDER 110
- 113 --- BORDER 111
- 114 --- BORDER 112
- 115 --- BORDER 113
- 116 --- BORDER 114
- 117 --- BORDER 115
- 118 --- BORDER 116
- 119 --- BORDER 117
- 120 --- BORDER 118
- 121 --- BORDER 119
- 122 --- BORDER 120
- 123 --- BORDER 121
- 124 --- BORDER 122
- 125 --- BORDER 123
- 126 --- BORDER 124
- 127 --- BORDER 125
- 128 --- BORDER 126
- 129 --- BORDER 127
- 130 --- BORDER 128
- 131 --- BORDER 129
- 132 --- BORDER 130
- 133 --- BORDER 131
- 134 --- BORDER 132
- 135 --- BORDER 133
- 136 --- BORDER 134
- 137 --- BORDER 135
- 138 --- BORDER 136
- 139 --- BORDER 137
- 140 --- BORDER 138
- 141 --- BORDER 139
- 142 --- BORDER 140
- 143 --- BORDER 141
- 144 --- BORDER 142
- 145 --- BORDER 143
- 146 --- BORDER 144
- 147 --- BORDER 145
- 148 --- BORDER 146
- 149 --- BORDER 147
- 150 --- BORDER 148
- 151 --- BORDER 149
- 152 --- BORDER 150
- 153 --- BORDER 151
- 154 --- BORDER 152
- 155 --- BORDER 153
- 156 --- BORDER 154
- 157 --- BORDER 155
- 158 --- BORDER 156
- 159 --- BORDER 157
- 160 --- BORDER 158
- 161 --- BORDER 159
- 162 --- BORDER 160
- 163 --- BORDER 161
- 164 --- BORDER 162
- 165 --- BORDER 163
- 166 --- BORDER 164
- 167 --- BORDER 165
- 168 --- BORDER 166
- 169 --- BORDER 167
- 170 --- BORDER 168
- 171 --- BORDER 169
- 172 --- BORDER 170
- 173 --- BORDER 171
- 174 --- BORDER 172
- 175 --- BORDER 173
- 176 --- BORDER 174
- 177 --- BORDER 175
- 178 --- BORDER 176
- 179 --- BORDER 177
- 180 --- BORDER 178
- 181 --- BORDER 179
- 182 --- BORDER 180
- 183 --- BORDER 181
- 184 --- BORDER 182
- 185 --- BORDER 183
- 186 --- BORDER 184
- 187 --- BORDER 185
- 188 --- BORDER 186
- 189 --- BORDER 187
- 190 --- BORDER 188
- 191 --- BORDER 189
- 192 --- BORDER 190
- 193 --- BORDER 191
- 194 --- BORDER 192
- 195 --- BORDER 193
- 196 --- BORDER 194
- 197 --- BORDER 195
- 198 --- BORDER 196
- 199 --- BORDER 197
- 200 --- BORDER 198
- 201 --- BORDER 199
- 202 --- BORDER 200
- 203 --- BORDER 201
- 204 --- BORDER 202
- 205 --- BORDER 203
- 206 --- BORDER 204
- 207 --- BORDER 205
- 208 --- BORDER 206
- 209 --- BORDER 207
- 210 --- BORDER 208
- 211 --- BORDER 209
- 212 --- BORDER 210
- 213 --- BORDER 211
- 214 --- BORDER 212
- 215 --- BORDER 213
- 216 --- BORDER 214
- 217 --- BORDER 215
- 218 --- BORDER 216
- 219 --- BORDER 217
- 220 --- BORDER 218
- 221 --- BORDER 219
- 222 --- BORDER 220
- 223 --- BORDER 221
- 224 --- BORDER 222
- 225 --- BORDER 223
- 226 --- BORDER 224
- 227 --- BORDER 225
- 228 --- BORDER 226
- 229 --- BORDER 227
- 230 --- BORDER 228
- 231 --- BORDER 229
- 232 --- BORDER 230
- 233 --- BORDER 231
- 234 --- BORDER 232
- 235 --- BORDER 233
- 236 --- BORDER 234
- 237 --- BORDER 235
- 238 --- BORDER 236
- 239 --- BORDER 237
- 240 --- BORDER 238
- 241 --- BORDER 239
- 242 --- BORDER 240
- 243 --- BORDER 241
- 244 --- BORDER 242
- 245 --- BORDER 243
- 246 --- BORDER 244
- 247 --- BORDER 245
- 248 --- BORDER 246
- 249 --- BORDER 247
- 250 --- BORDER 248
- 251 --- BORDER 249
- 252 --- BORDER 250
- 253 --- BORDER 251
- 254 --- BORDER 252
- 255 --- BORDER 253
- 256 --- BORDER 254
- 257 --- BORDER 255
- 258 --- BORDER 256
- 259 --- BORDER 257
- 260 --- BORDER 258
- 261 --- BORDER 259
- 262 --- BORDER 260
- 263 --- BORDER 261
- 264 --- BORDER 262
- 265 --- BORDER 263
- 266 --- BORDER 264
- 267 --- BORDER 265
- 268 --- BORDER 266
- 269 --- BORDER 267
- 270 --- BORDER 268
- 271 --- BORDER 269
- 272 --- BORDER 270
- 273 --- BORDER 271
- 274 --- BORDER 272
- 275 --- BORDER 273
- 276 --- BORDER 274
- 277 --- BORDER 275
- 278 --- BORDER 276
- 279 --- BORDER 277
- 280 --- BORDER 278
- 281 --- BORDER 279
- 282 --- BORDER 280
- 283 --- BORDER 281
- 284 --- BORDER 282
- 285 --- BORDER 283
- 286 --- BORDER 284
- 287 --- BORDER 285
- 288 --- BORDER 286
- 289 --- BORDER 287
- 290 --- BORDER 288
- 291 --- BORDER 289
- 292 --- BORDER 290
- 293 --- BORDER 291
- 294 --- BORDER 292
- 295 --- BORDER 293
- 296 --- BORDER 294
- 297 --- BORDER 295
- 298 --- BORDER 296
- 299 --- BORDER 297
- 300 --- BORDER 298

LX HANG POSITION SL
 CATWALK FLOOR SL
 CLEAR HEIGHT SL
 LX HANG POSITION S
 CEILING SL
 CATWALK FLOOR SR
 CLEAR HEIGHT SR

JULIET BANNER

SHARPA'S LOCKER

Neptune Theatre - Mainstage
High School Musical
 SECTION
 Drawing 2 of 8
 Director: David Connolly
 Designer: Julia Trile
 Lighting Designer: Lesley Wilkinson
 Drafted by: Jung-Hye Kim | Date: 16/02/09
 Scale: 1/4" = 1'-0"

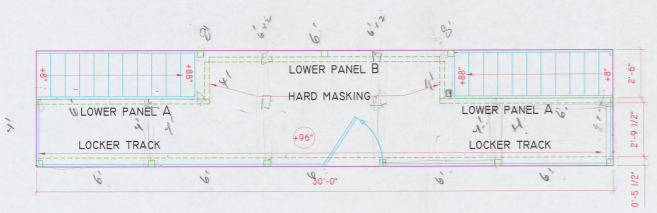
10.833.32



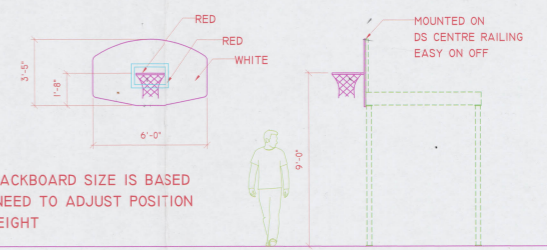
Handwritten notes: 1' x 8' pm 232', 6' x 12' pm 72', 8' x 2' pm 16', 120'

Handwritten notes: 2x4 - SPF \$1.89, 2x6 - 8' spunk \$0.49/ft, 2x8 - \$0.69/ft, Payment's, SPF kb. post going down

Handwritten notes: Handrail, 28 @ 4', 2 @ 30', 4 @ 10', 180', 8 long @ 24'

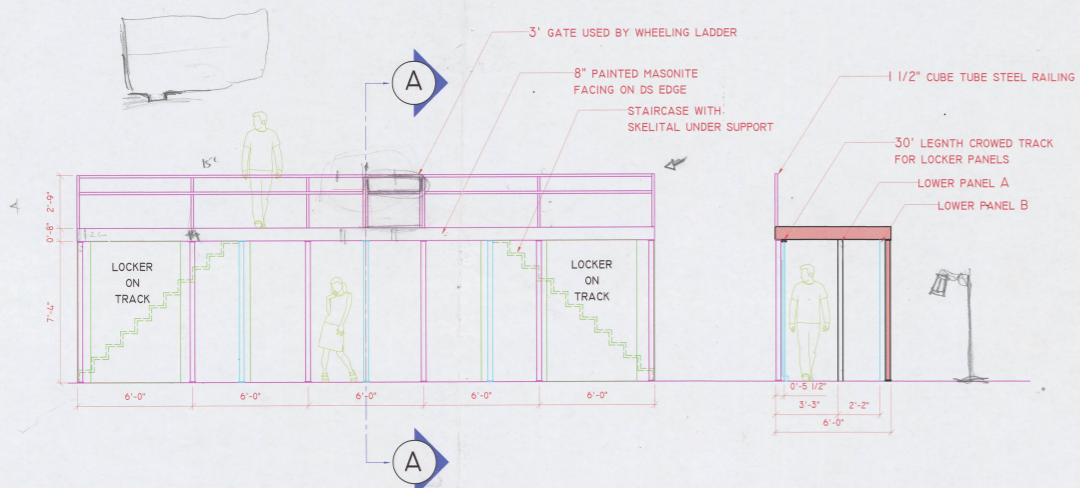


1/3 PLAN- PLATFORM SCALE: 1/4" = 1'-0"



NOTE: BASKETBALL BACKBOARD SIZE IS BASED ON NBA STANDARD. NEED TO ADJUST POSITION OF HOOP FOR TRIM HEIGHT

5/3 BASKETBALL BACKBOARD SCALE: 1/4" = 1'-0"

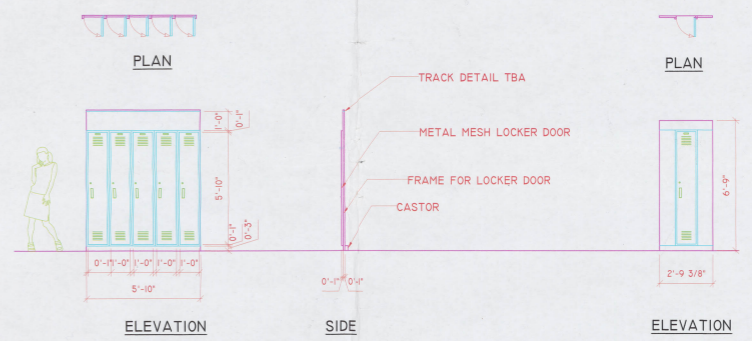


2/3 ELEVATION- PLATFORM SCALE: 1/4" = 1'-0"

3/3 SECTION A-A - PLATFORM SCALE: 1/4" = 1'-0"

TOTAL MOVING LOCKER: 2
TOTAL LOCKER DOORS: 11

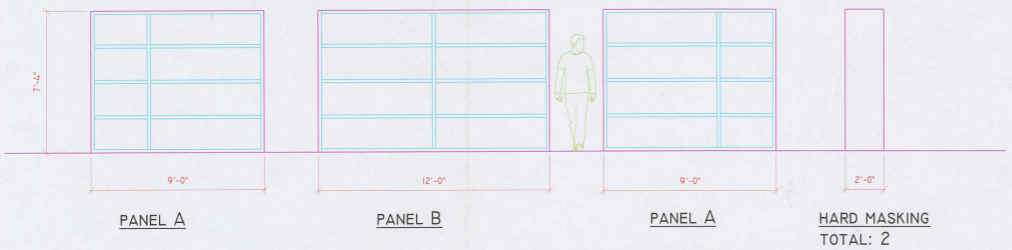
NOTE: INTERNAL DETAIL OF LX TBA INSIDE DRESSING REQUIRED



6/3 LOCKER ON TRACK SCALE: 1/4" = 1'-0"

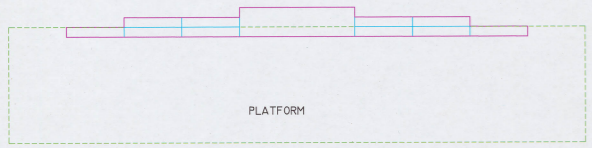
7/3 SHARPAY'S LOCKER SCALE: 1/4" = 1'-0"

NOTE: 1. FRAMING WITH SURFACE TYVEK OR MUSLIN WITH 2" MASONITE STRIPPING ON TOP TO ACCENT GRID
2. PAINTED TREATMENT ON TYVEK OR MUSLIN TBA

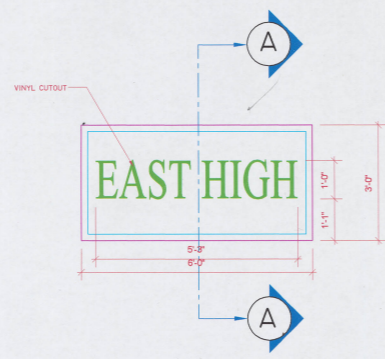


4/3 LOWER PANELS SCALE: 1/4" = 1'-0"

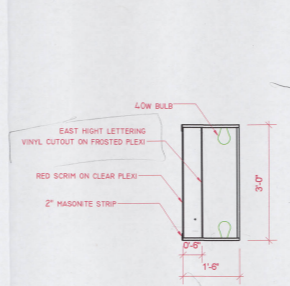
Handwritten note: 2x4 8 x 3 1/2'



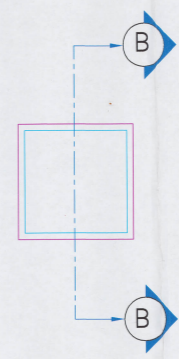
PLAN



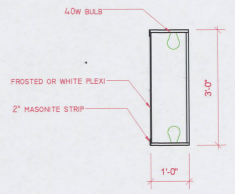
2/4 ELEVATION- TOP LX BOX
SCALE: 1/2" = 1'-0"



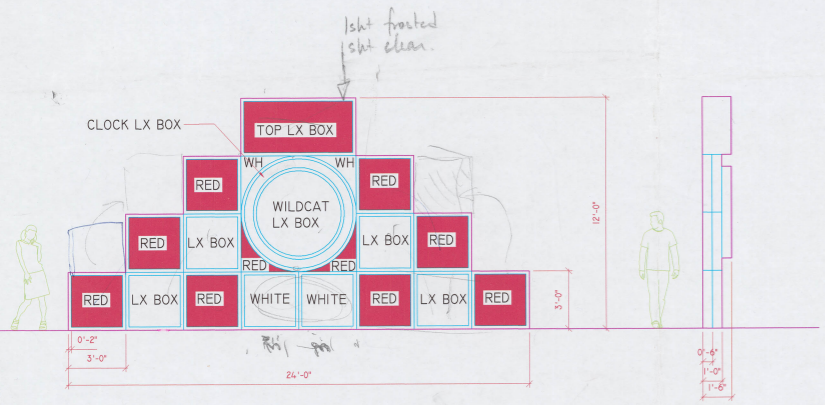
3/4 SECTION A-A - TOP LX BOX
SCALE: 1/2" = 1'-0"



4/4 ELEVATION- 3'x3' LX BOX
SCALE: 1/2" = 1'-0"

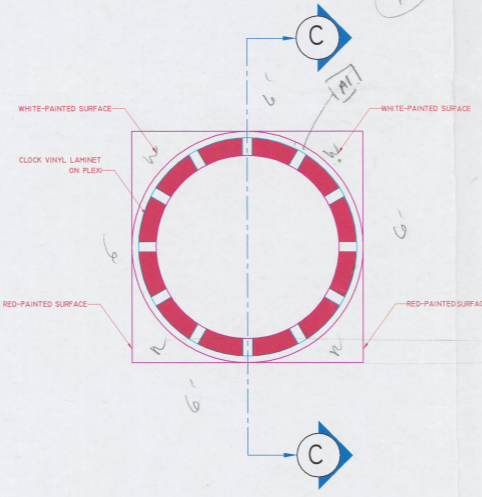


5/4 SECTION B-B - 3'x3' LX BOX
SCALE: 1/2" = 1'-0"

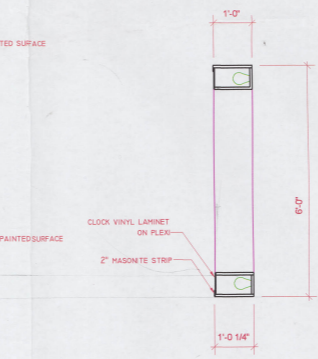


21' x 9' + 3x6:
ELEVATION

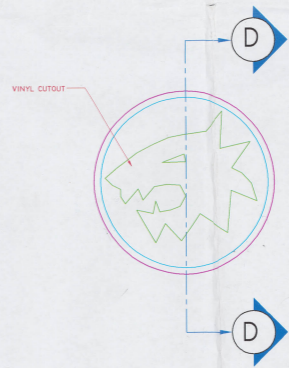
SIDE



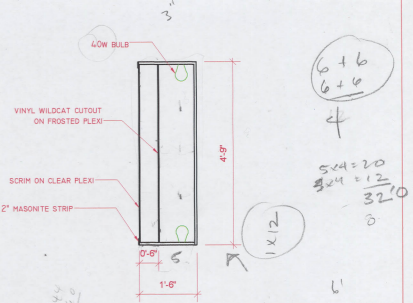
6/4 ELEVATION- CLOCK LX BOX
SCALE: 1/2" = 1'-0"



7/4 SECTION C-C - CLOCK LX BOX
SCALE: 1/2" = 1'-0"



8/4 ELEVATION- WILDCAT LX BOX
SCALE: 1/2" = 1'-0"

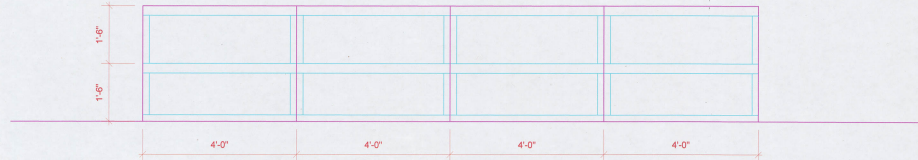


9/4 SECTION D-D - WILDCAT LX BOX
SCALE: 1/2" = 1'-0"

1/4 UPPER WALL FLAT WITH LX BOXES
SCALE: 1/4" = 1'-0"

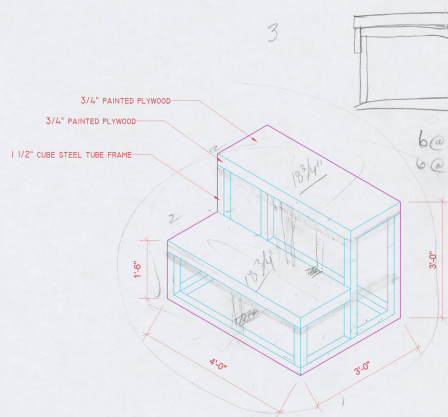


1
5 PLAN- MOVING STAIR UNITS
SCALE: 1/2" = 1'-0"



NOTE: BREAK INTO 2 AND THEN 4 UNITS AND USED IN DIFFERENT FORMATION

2
5 ELEVATION- MOVING STAIR UNITS
SCALE: 1/2" = 1'-0"



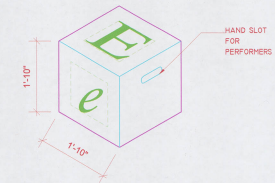
- NOTE:
1. CONSTRUCTED OUT OF CUBE STEEL TUBING
 2. INSET RARE EARTH MAGNET ON 2 SIDES AND BACK FOR LOCKING WITH OTHER STAIR UNITS
 3. GLIDER ON THE BOTTOM FOR SMOOTH MOVEMENT

3
5 ISOMETRIC- STAIR UNITS
SCALE: 1/2" = 1'-0"

Handwritten notes: 7.5 lbs, 3/4 lb ft, 10 ft, 20" Tri foam, Top + bottom, Build top on hand grips.

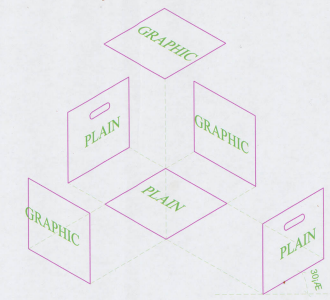
Handwritten notes: 3/4" Paint, 1/2" 1/8" aluminum, 2x Seat.

Handwritten calculations:
 $6 @ 3' = 18'$
 $6 @ 26.12' = 30'$
 $804' 32' = 64'$
 $1 1/2 + 3/4 = 2 1/4$
 $4 @ 4' = 16'$
 $6 @ 3' = 18'$
 $4 @ 1'6" = 6'$
 $3 @ 4' = 12'$
 $6 @ 3' = 18'$
 $4 @ 1'6" = 6'$
 $77'$
 $80'$



TOTAL: 8 CUBES

4
5 ISOMETRIC- CUBES
SCALE: 1/2" = 1'-0"



5
5 EXPLODED ISOMETRIC- CUBES
SCALE: 1/2" = 1'-0"

LETTERING FONT- TIMES BLOOD OUTLINE

W	I	L	D	C	A	T	S
E	A	S	T	H	I	G	H
e	=	M	c	2	DRAMA QUEEN	GET YOUR HEAD IN THE GAME	SR. + SL. 1

CUBE 1 CUBE 2 CUBE 3 CUBE 4 CUBE 5 CUBE 6 CUBE 7 CUBE 8

6
5 GRAPHIC LAYOUT- CUBES
SCALE: 1/2" = 1'-0"



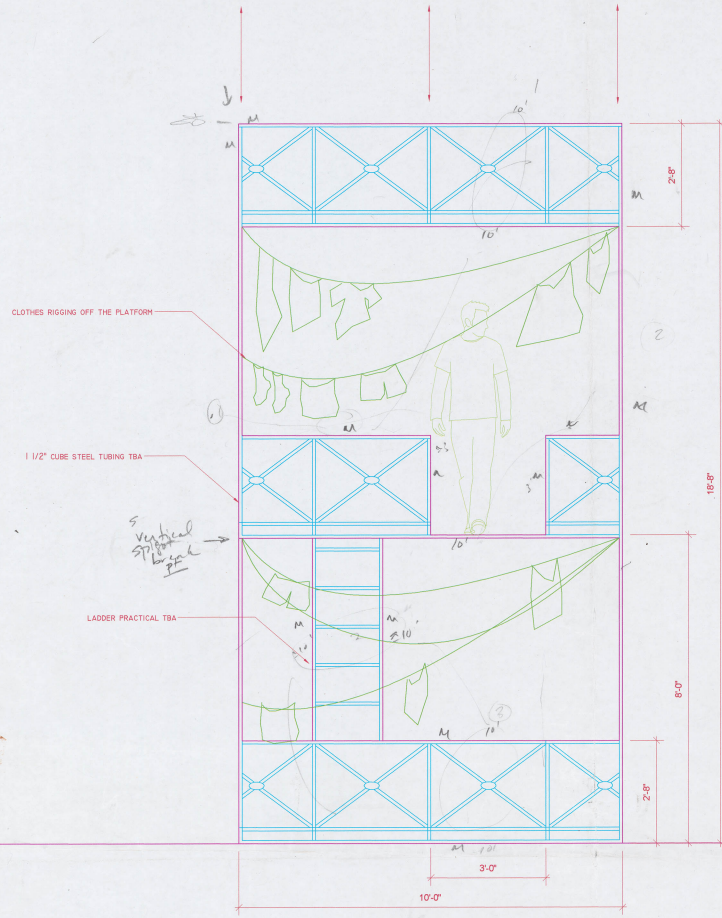
B. Dove
 hr 852-3864
 m 493-6226

② 24 18'8" x 2 = 37'4"
 3'3" x 4 = 13'0"
 10'8" 10' x 6 = 60'
 6' x 2 = 12'
 110'4"

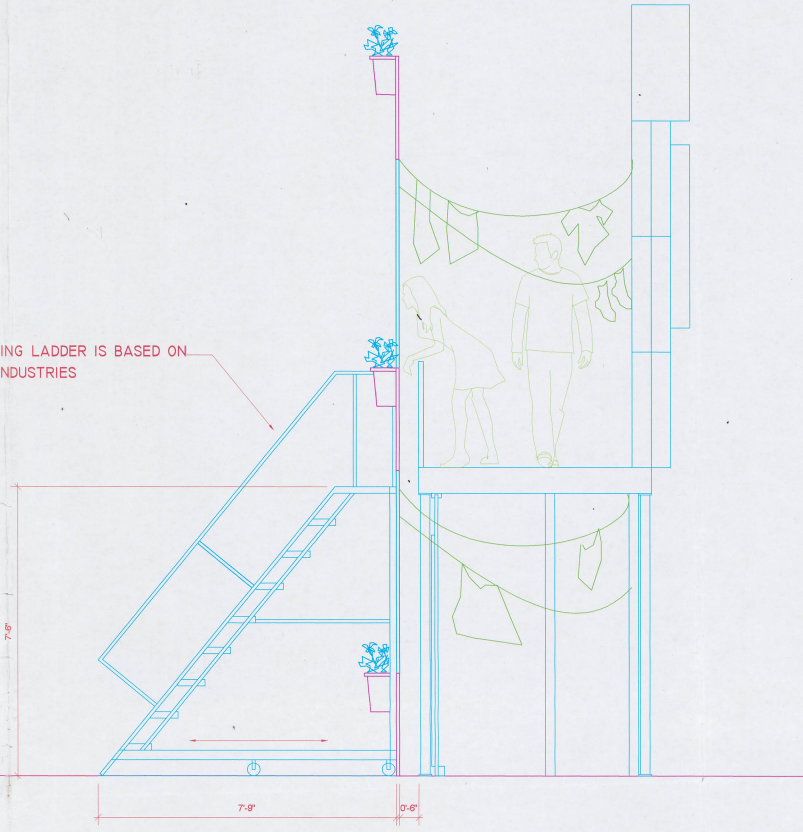
-30 lbs
 .120 90 lbs - Alum → 6 pax
 Alum 1 1/2" dia .100 wall

7-8 @ 20' if alum
 6 @ 24' 1 1/2" dia

54" sprig flat bar
 2 @ 3px
 1.4 1px 6 @ 10' → 60'
 3px 2 @ 18'8" → 37'4"
 6px 4 @ 4' (36) 14'0" 1px
 1 @ 4'8" 124'

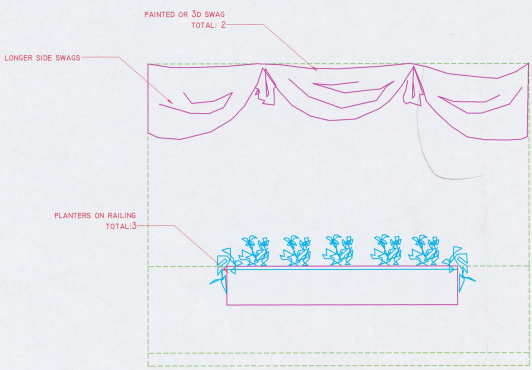


DIMENSION OF ROLLING LADDER IS BASED ON GSX2409 FROM FSINDUSTRIES

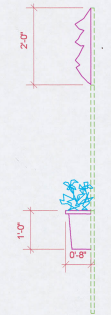


1/6 ELEVATION- JULIET FLAT
 SCALE: 1/2" = 1'-0"

2/6 SIDE- JULIET FLAT
 SCALE: 1/2" = 1'-0"

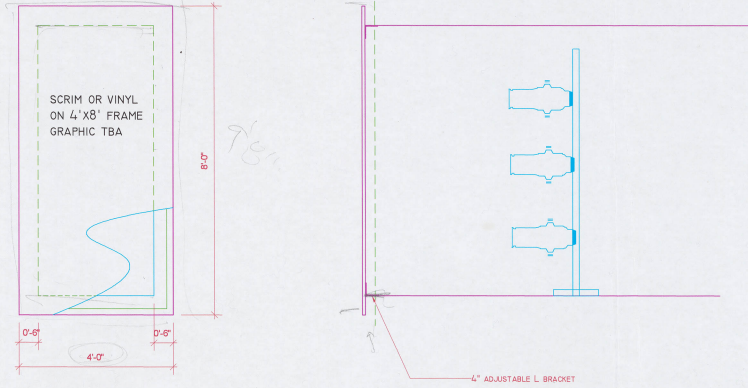


ELEVATION



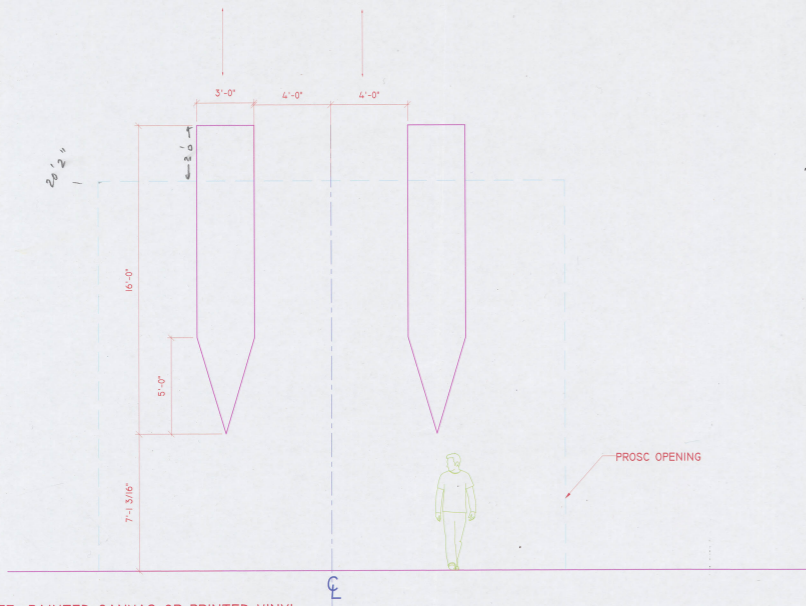
SIDE

3/6 DRESSING FOR JULIET FLAT
 SCALE: 1/2" = 1'-0"



TOTAL BANNERS: 2

4/6 JULIET BANNERS
 SCALE: 1/2" = 1'-0"

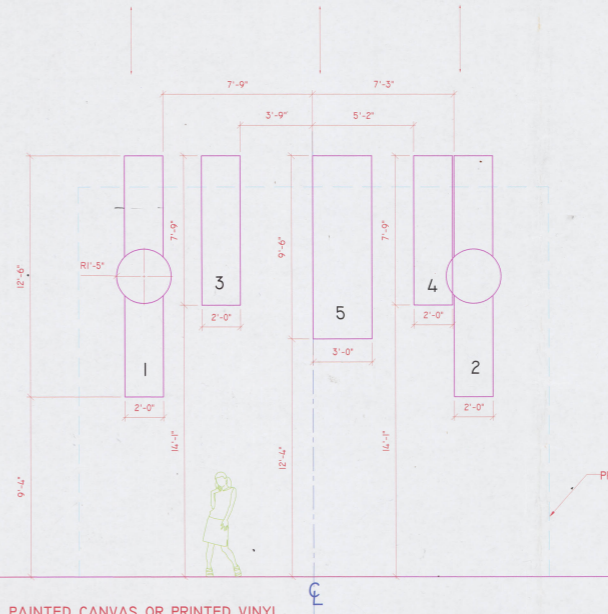


NOTE: PAINTED CANVAS OR PRINTED VINYL
SEE RESEARCH

1/7

BANNER GROUP A- EAST HIGH STEPS

SCALE: 1/4" = 1'-0"

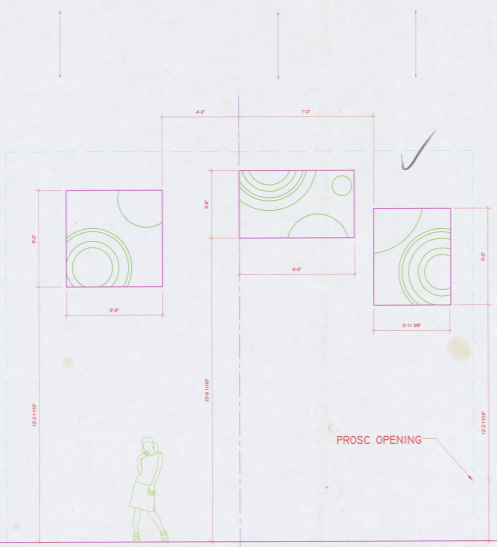
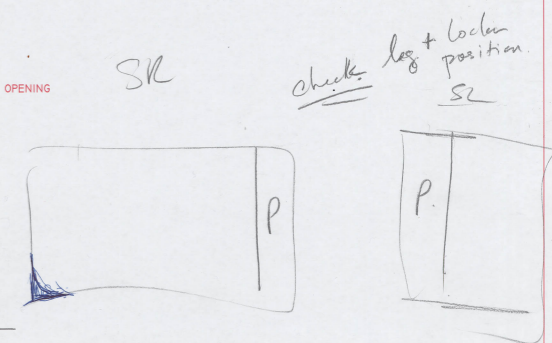


NOTE: PAINTED CANVAS OR PRINTED VINYL
SEE RESEARCH

2/7

BANNER GROUP B- GYM

SCALE: 1/4" = 1'-0"

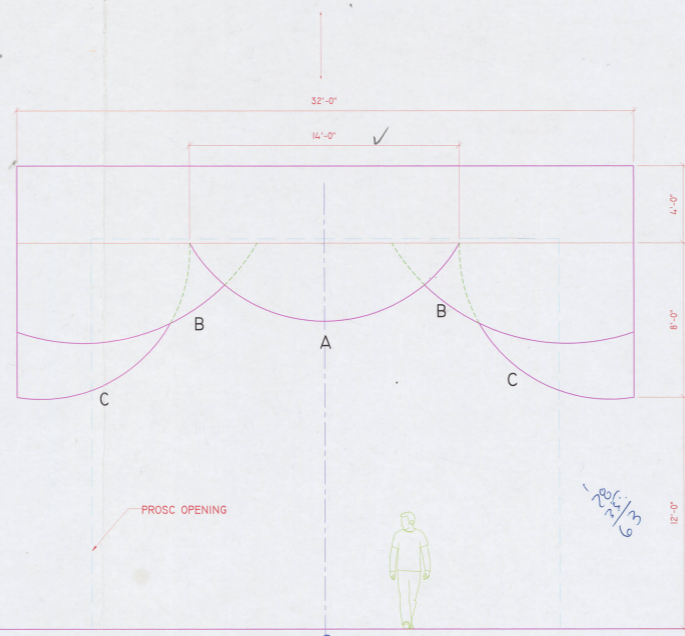


NOTE: PAINTED CANVAS OR PRINTED VINYL
SEE RESEARCH

3/7

BANNER GROUP C- CAFETERIA

SCALE: 1/4" = 1'-0"

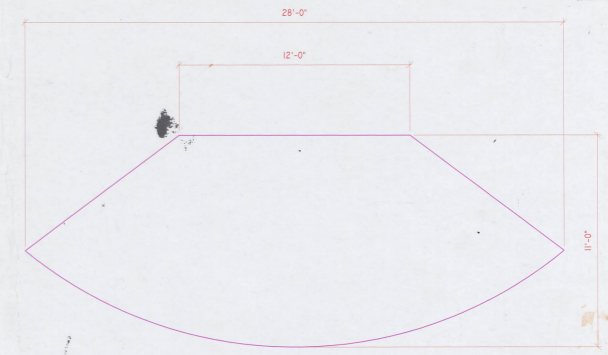


NOTE: VELOUR OR PAINTED CANVAS DRAPED OVER BATON

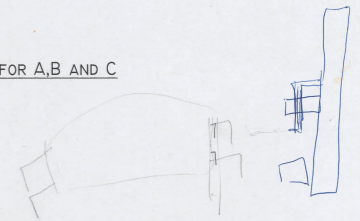
4/7

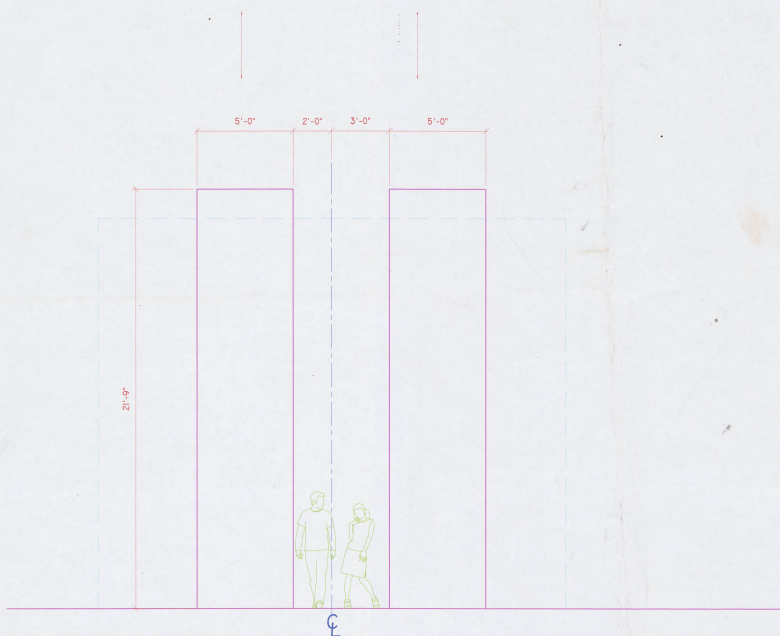
THEATRE DRAPE

SCALE: 1/4" = 1'-0"



PATTERN FOR A,B AND C



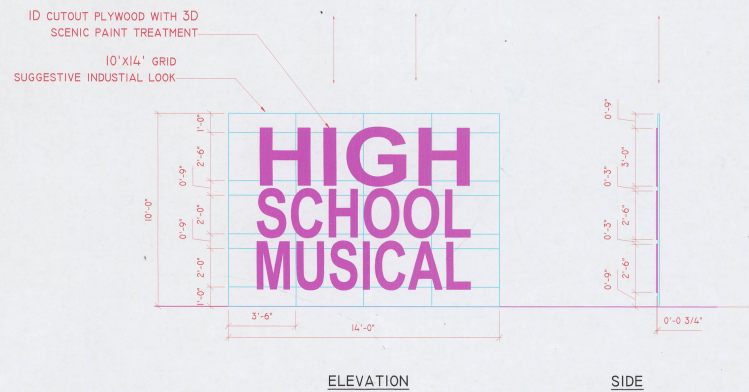


1. TROD BONTJE INSPIRED -SILK PANELS
PAINTED WITH SOME APPLIQUE
SPECIAL GOBO TBA
2. QUICK RELEASE FROM PIPE

1
8

ROOF TOP GARDEN PANELS

SCALE: 1/4" = 1'-0"



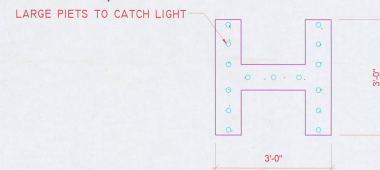
ELEVATION

SIDE

2
8

H.S.M. 3D DROPS

SCALE: 1/2" = 1'-0"



NOTE: PLYWOOD CUTOUT WITH 3D SCENIC PAINT TREATMENTS

3
8

LETTER DETAIL

SCALE: 1/2" = 1'-0"

W = VA
120(20)
16. W = 2400
3.
\$13.99