

KEY		
	6" 1KW FRES.	36
	15° LEKO	11
	20° LEKO	45
	30° LEKO	4
	S4 - 19°	19
	S4 - 26°	25
	S4 - 36°	3
	S4 - 50°	0
	PARALLISPHERE	4

"NO GREAT MISCHIEF"
 75% LX ROT, OCT 11, 2009
 NEPTUNE THEATRE
 DIRECTOR: RICHARD ROSE 1/1"=
 SET DESIGN: CHARLOTTE DEAN 1'-0"
 LX DESIGN: GRAEME THOMPSON

- #29
- #28
- #27
- #26
- #25
- #24
- #23
- #22
- #21
- #20
- #19
- #18
- #17
- #16
- #15
- #14
- #13
- #12
- #11 LEGS
- #10 ~~FRONT~~
- #9
- #8
- #7
- #6
- #5
- #4
- #3 LEGS
- #2 ~~BACK~~
- #1

SOME GERMAN MASKING
WILL BE NEEDED HERE
*WORK AROUND LIGHTING NEEDS

GERMAN SE

GERMAN SW

24'9"

29"

8'0"

PLATAGE 'EMBEDDED'
WITH TWINKIE LIES
TO CREATE
① STAR-SURROUND
② "HOME"
③ CANO CAUSEWAY

TOP OF EACH WALL

PAINT TREATMENT
TO THIS LINE

PLEXI ICE FLOW
ILLUMINATED FROM BELOW
IN TRAP AREA

SOFT LEGS
TO EXTEND PAST
HARD FLATS

24'8"

3'0"

26"

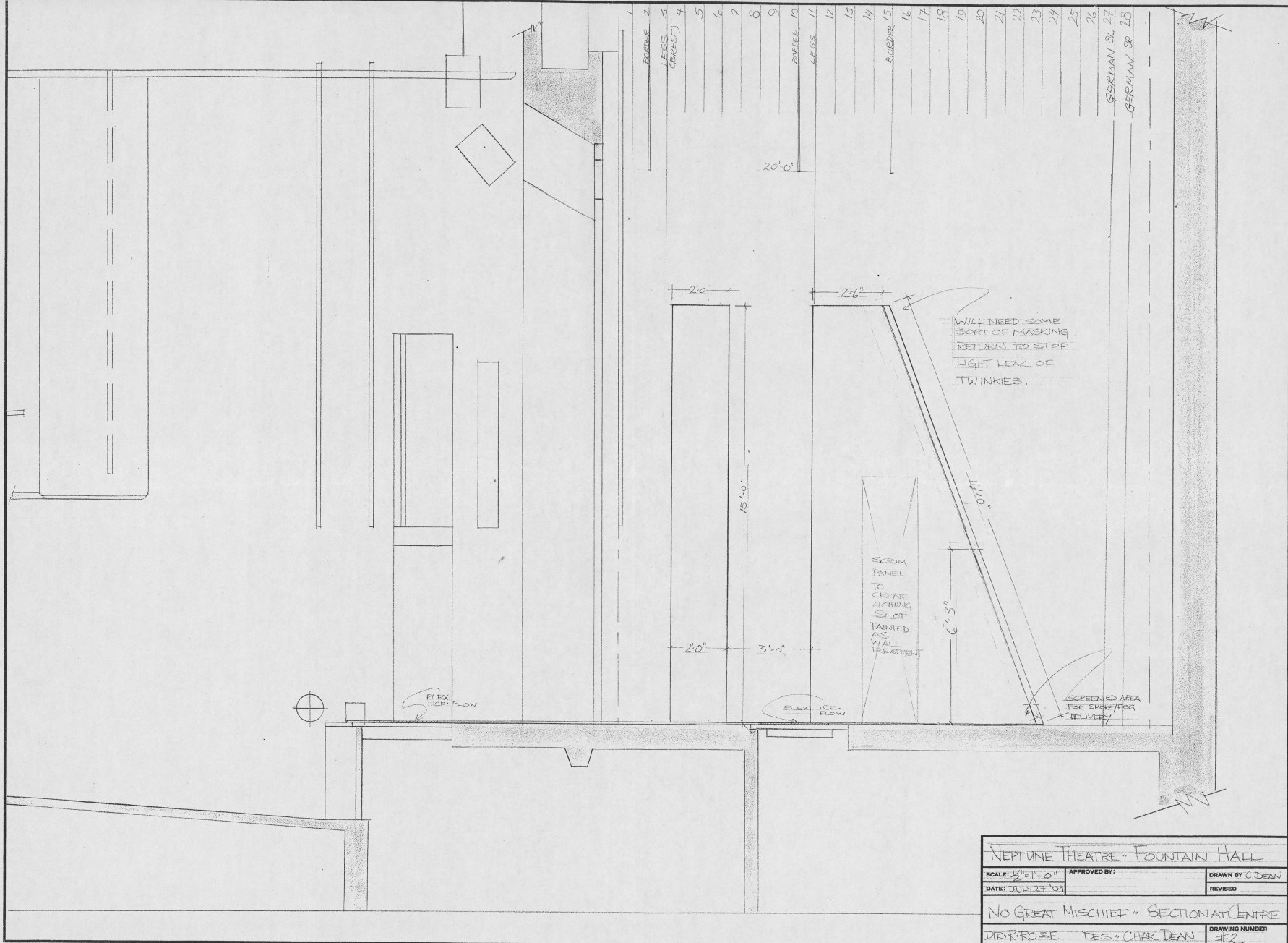
20"

260" x

#0 FIRE CURTAIN

FLEXI ICE-FLOW
ILLUMINATED FROM
BELOW IN PIT

NEPTUNE THEATRE " FOUNTAIN HALL		
SCALE: 1/4" = 1'-0"	APPROVED BY:	DRAWN BY: C. DEAN
DATE: JULY 27 '09		REVISED
NO GREAT MISCHIEF - GROUND PLAN		
DIR: R. ROSE	DES: C. DEAN	DRAWING NUMBER: #1



EDGE 2
 LESS (GAP) 3
 4
 5
 6
 7
 8
 9
 EDGE 10
 LESS 11
 12
 13
 14
 EDGE 15
 16
 17
 18
 19
 20
 21
 22
 23
 24
 25
 26
 GERMAN SL 27
 GERMAN SR 28

WILL NEED SOME
 SORT OF MASKING
 RETURN TO STOP
 LIGHT LEAK OF
 TWINKIES.

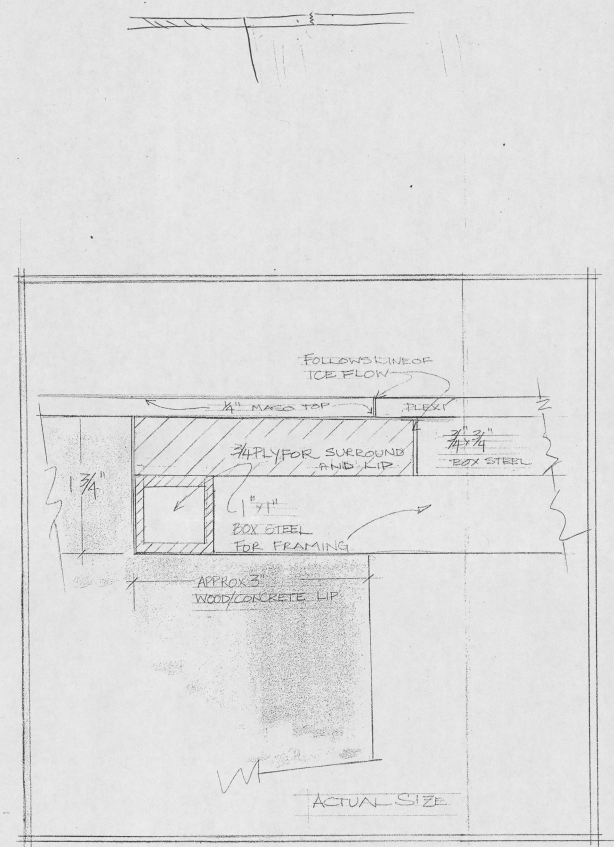
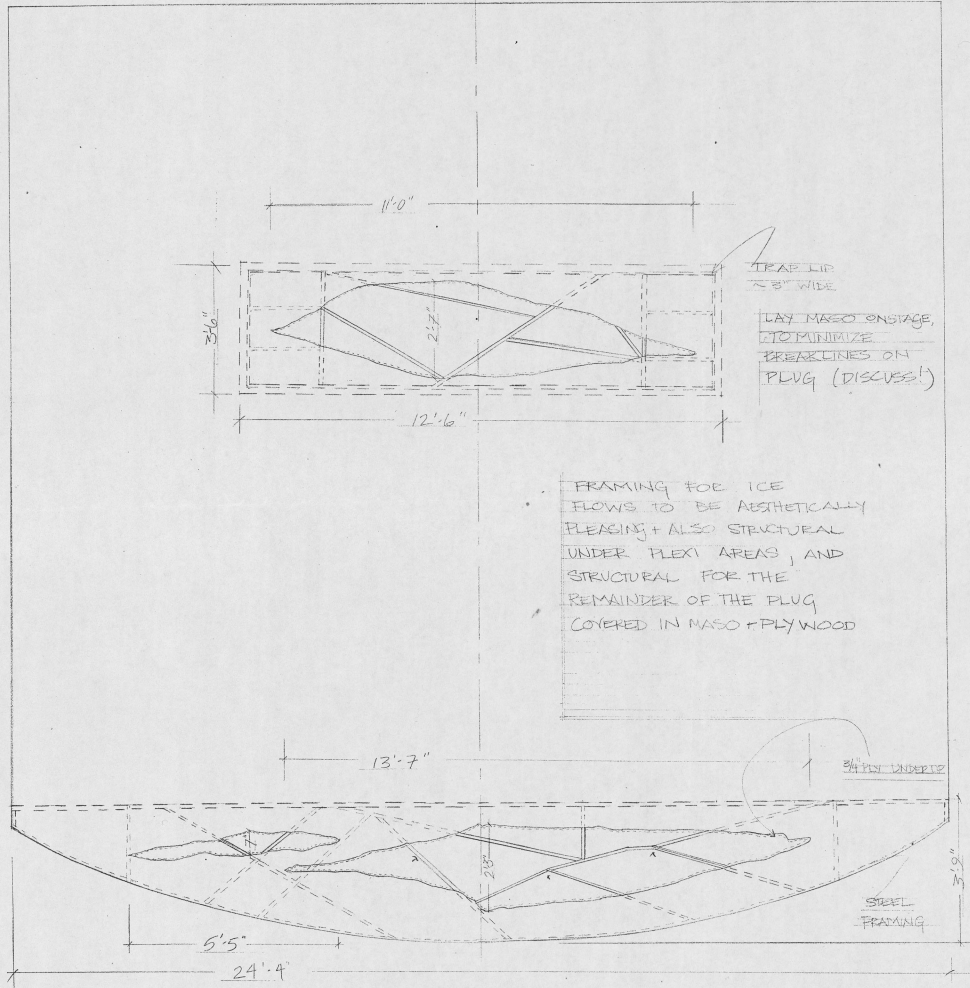
SCRIM
 PANEL
 TO
 CREATE
 LIGHTING
 SLOT
 PAINTED
 AS
 WALL
 TREATMENT

SCREENED AREA
 FOR SMOKE/EDGE
 DELIVERY

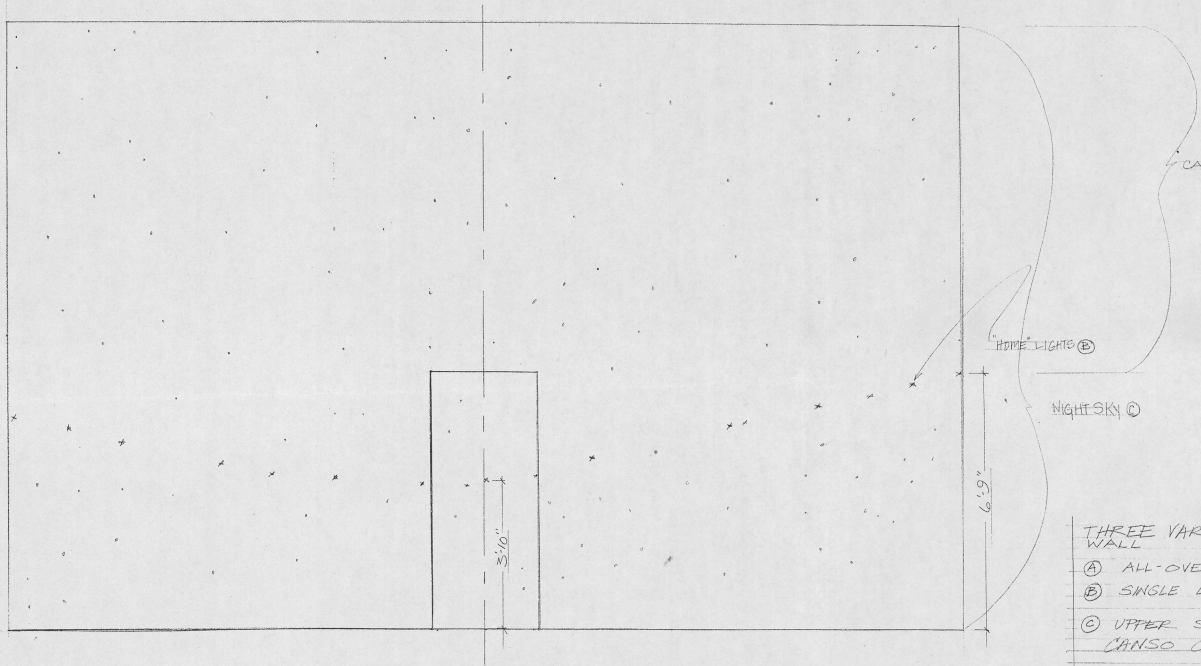
FLEX ICE FLOW

FLEX ICE FLOW

NEPTUNE THEATRE - FOUNTAIN HALL		
SCALE: 1/2" = 1'-0"	APPROVED BY:	DRAWN BY C. DEAN
DATE: JULY 27 '09		REVISED
NO GREAT MISCHIEF - SECTION AT CENTRE		
DR. PROSE	DES. CHAR. DEAN	#2



NO GREAT MISCHIEF - NEPTUNE THEATRE		
SCALE: 1/2" = 1'-0"	APPROVED BY:	DRAWN BY C. DEAN
DATE: DEC 2, 09	REVISED	
FLOOR LAYOUT = ICE FLOW FRAMING		
DIR: R. ROSE	DES: C. DEAN	DRAWING NUMBER #3



CANSO CAUSEWAY

HOME LIGHTS (B)

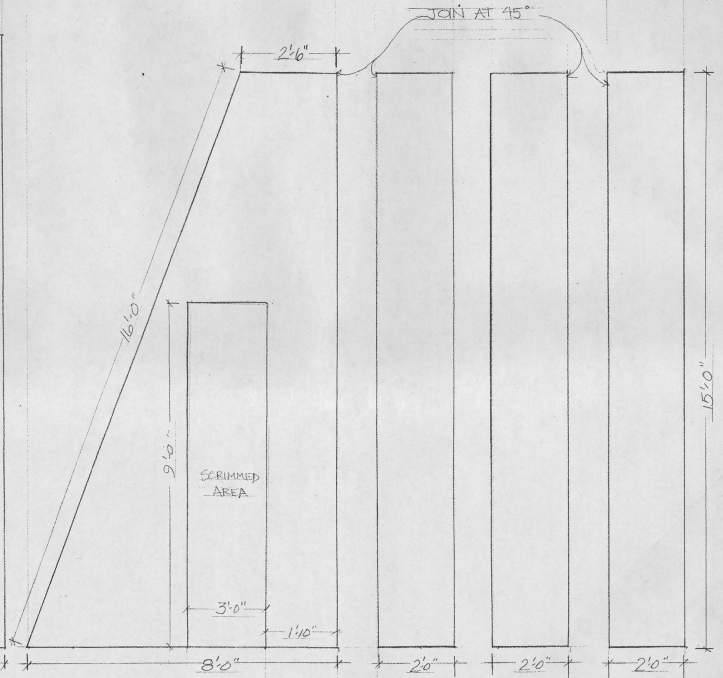
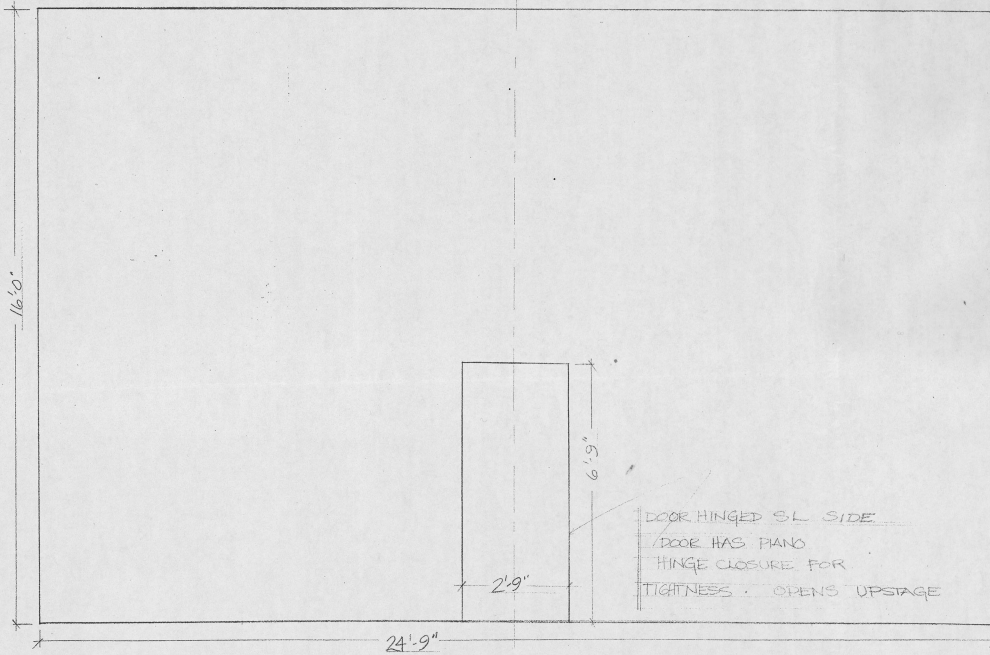
NIGHT SKY (C)

6'9"

3'10"

- THREE VARIATIONS ON TWINKIE LIGHTS ON BACK WALL
- (A) ALL-OVER COVERAGE FOR STARS IN NIGHT SKY
 - (B) SINGLE LINE/ROW FOR THE LIGHTS OF HOME
 - (C) UPPER SECTION ABOVE "HOME" LIGHTS FOR CANSO CAUSEWAY

"NO GREAT MISCHIEF" NEPTUNE THEATRE		
SCALE: 1/2" = 1'-0"	APPROVED BY:	DRAWN BY: C. DEAN
DATE: AUG 31, 07		REVISED
TWINKIE LITES - BACK WALL		
DIR: R. ROSE	DES: C. DEAN	DRAWING NUMBER # 4



BACK WALL

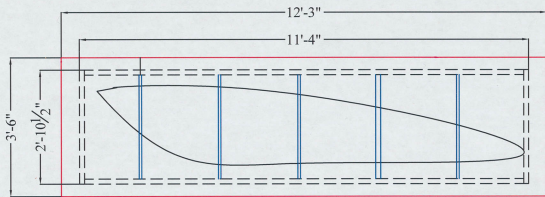
UPSTAGE LEFT WALL

U.S.L. RETURN D.S.L. WALL D.S.L. RETURN

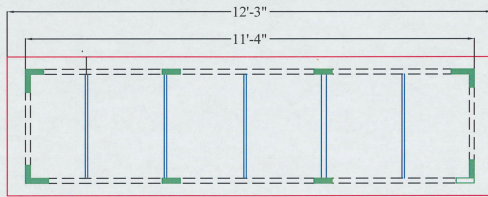
IV. FLAT CONSTRUCTION
 FACED WITH MASO
 PAINT TREATMENT - SEE MAQUETTE

STAGE RIGHT WALLS + RETURNS
 ARE MIRROR IMAGE

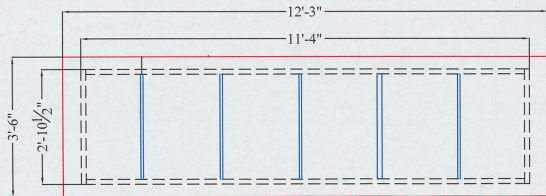
NO GREAT MISCHIEF - NEPTUNE THEATRE		
SCALE: 1/2" = 1'-0"	APPROVED BY:	DRAWN BY: CIDEAN
DATE: SEPT 6, 09	REVISED	
FRONT ELEVATIONS + BACK WALL + SR WALLS		
DIR: R. ROSE	DES: CIDEAN	DRAWING NUMBER: #5



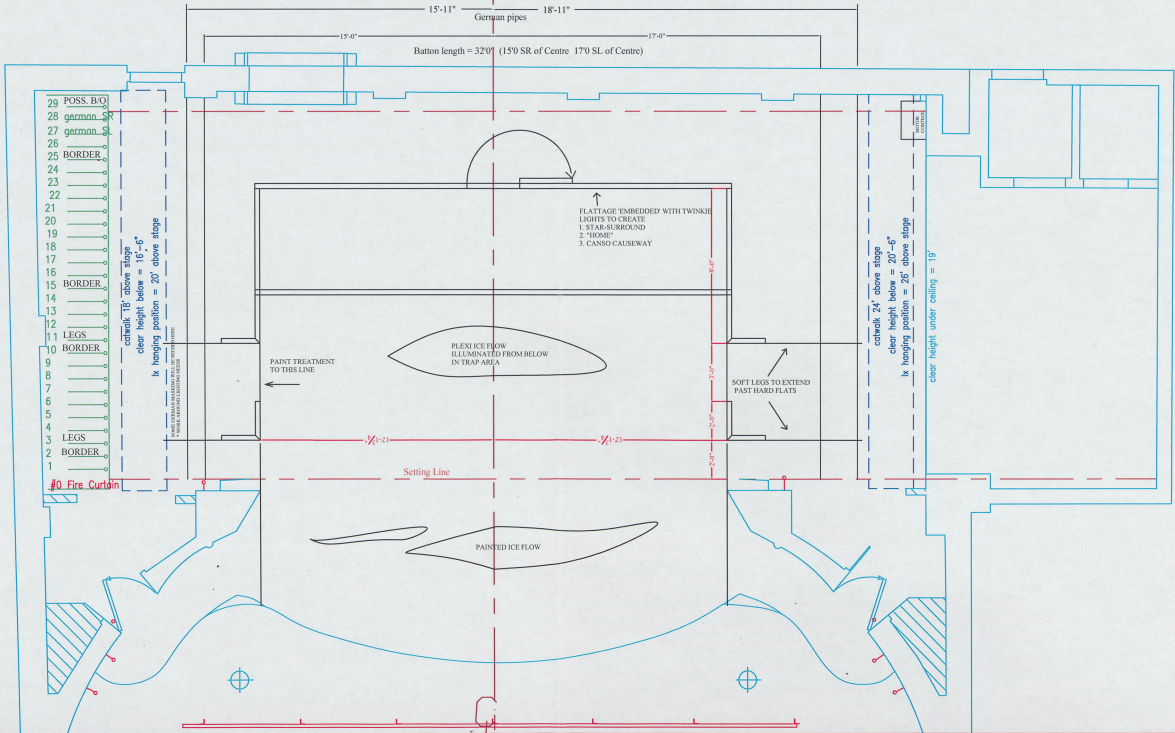
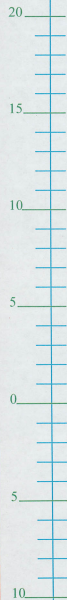
PLEXI TRAP
APPROXIMATE PLEXI LID LAYOUT



PLEXI TRAP
APPROXIMATE 2X6 LEG LAYOUT



PLEXI TRAP
PLAN, FRONT ELEVATION AND CENTRE SECTION
BLUE LINES = $\frac{3}{4}$ " PLEXI
RED LINES = LID
WHITE LINES = 2X6 FRAME



- #29 ○
- #28 ○
- #27 ○
- #26 ○
- #25 ○
- #24 ○
- #23 ○
- #22 ○
- #21 ○
- #20 ○
- #19 ○
- #18 ○
- #17 ○
- #16 ○
- #15 ○
- #14 ○
- #13 ○
- #12 ○
- #11 LEGS ○
- #10 FEEDER ○
- #9 ○
- #8 ○
- #7 ○
- #6 ○
- #5 ○
- #4 ○
- #3 LEGS ○
- #2 FEEDER ○
- #1 ○

SOME GERMAN MASKING WILL BE NEEDED HERE MORE AROUND LIGHTING NEEDS

GERMAN SL

GERMAN SL

24'9"

29"

FLATFACE 'EMBEDDED' WITH TWINKIE HTS TO CREATE ① STAR-SURROUND
 ② "HOME"
 ③ CANISO CAUSEWAY

8'0"

TOP OF BACK WALL

PAINT TREATMENT TO THIS LINE

PLEXI ICE FLOW ILLUMINATED FROM BELOW IN TRAP AREA

SOFT LEGS TO EXTEND PAST HARD FLATS

24'8"

3'0"

2'0"

2'0"

84"

#10 FIRE CURTAIN

9'2" 8'5" 2'7" 5' 2' 2'2" 8'0"

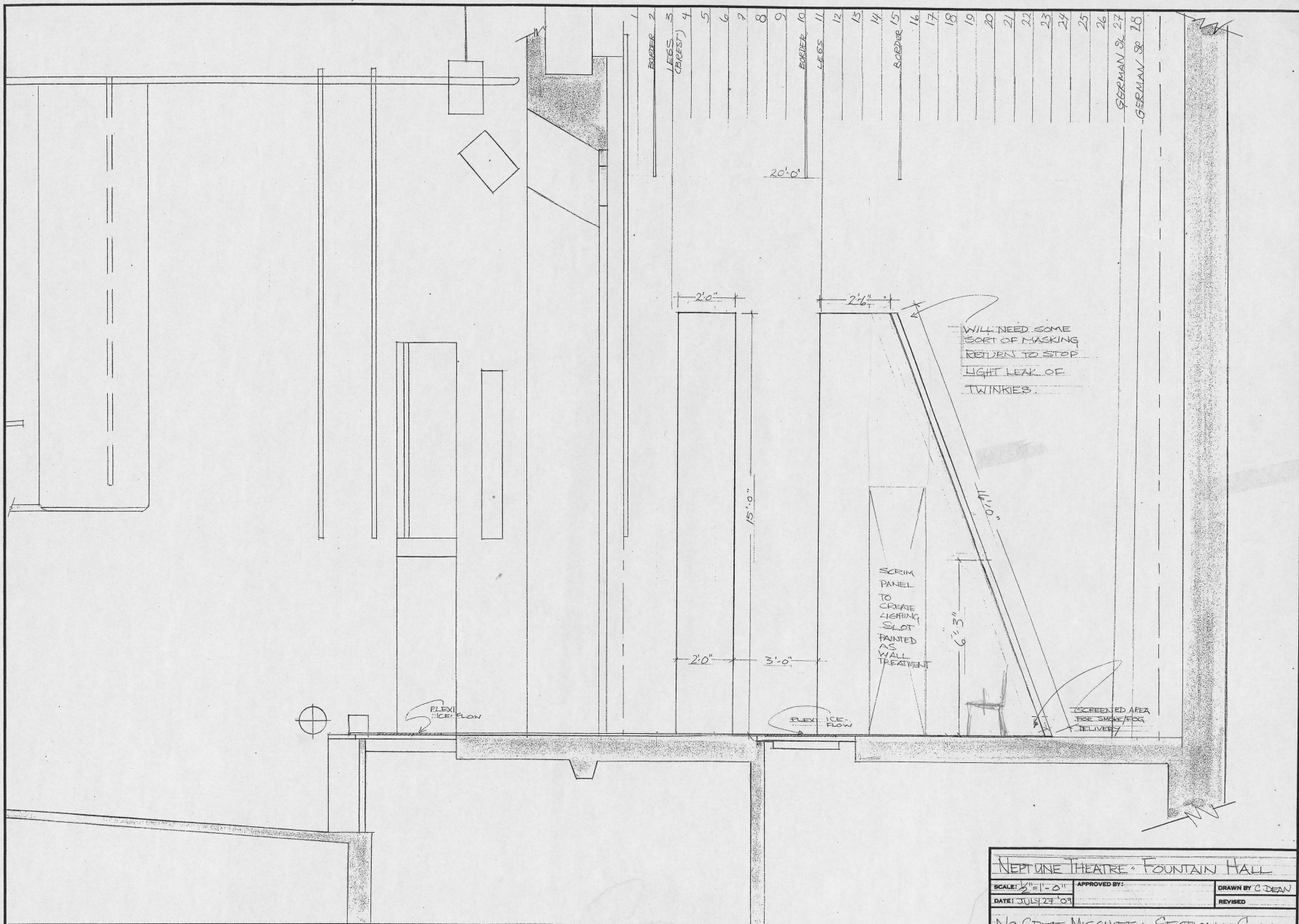
PLEXI ICE FLOW ILLUMINATED FROM BELOW IN PIT

NEPTUNE THEATRE " FOUNTAIN HALL

SCALE: 1/2" = 1'-0" APPROVED BY: DRAWN BY: C. DEAN
 DATE: JULY 27 '09 REVISED

NO GREAT MISCHIEF - GROUND PLAN

DICK ROSE DES. C. DEAN DRAWING NUMBER #1



NEPTUNE THEATRE - FOUNTAIN HALL		
SCALE: 1/2" = 1'-0"	APPROVED BY:	DRAWN BY C. DEAN
DATE: JULY 27 '09	REVISED	
NO GREAT MISCHIEF " SECTION AT CENTRE		
DIR: PROSE	DES: CHAR DEAN	DRAWING NUMBER #2