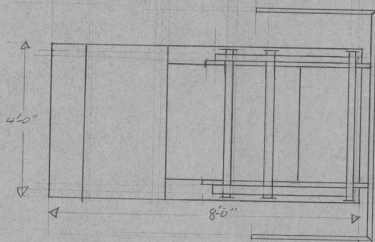
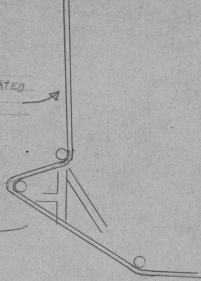
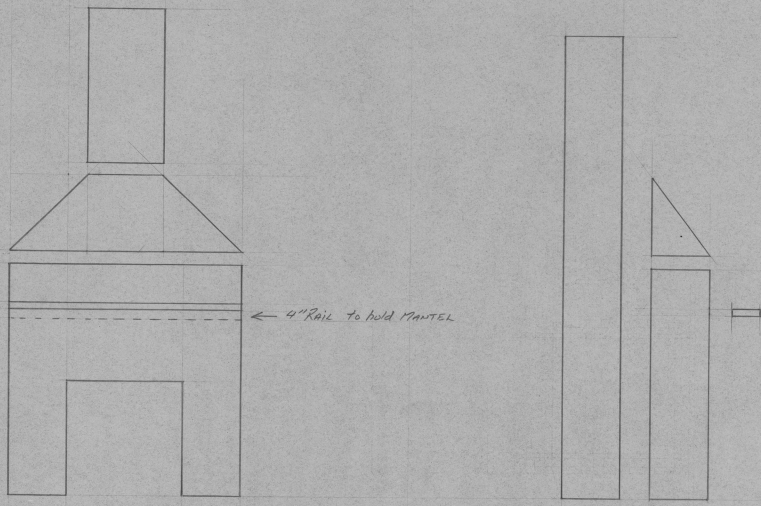
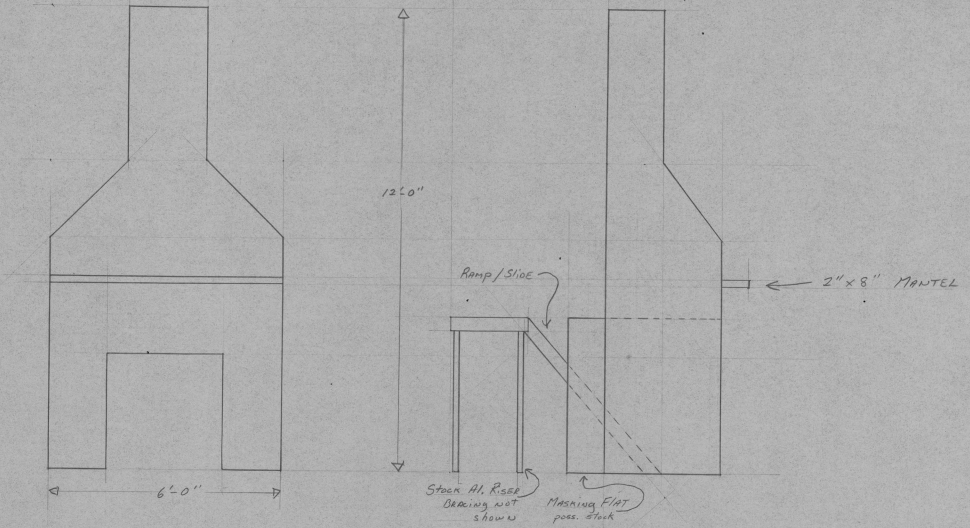


ROPE FROM
COUNTERWEIGHTED
BY LINE



THE END of the Beginning

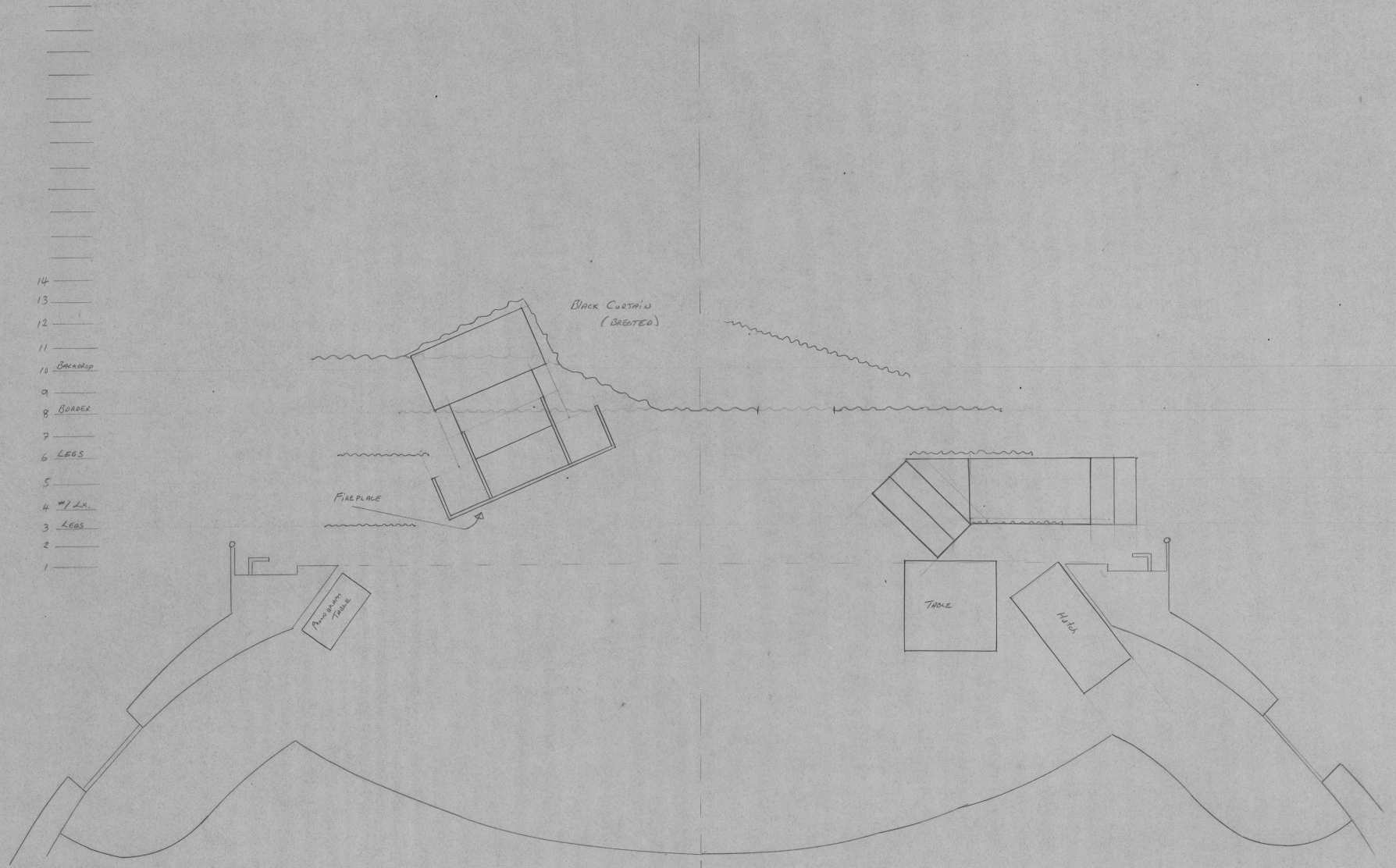
SCALE $\frac{1}{2}'' = 1'-0''$



N.B. - All flats covered with
panneling only.

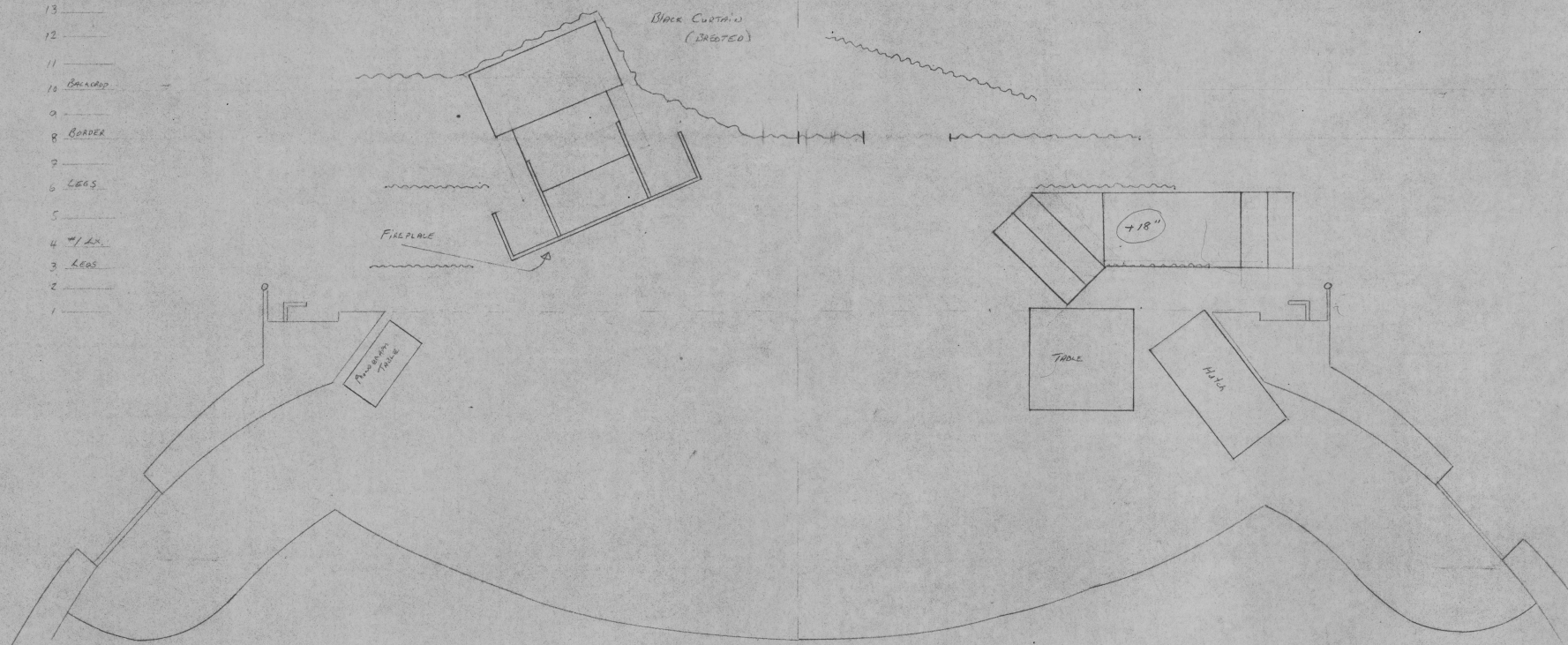
Triangle pieces to be fitted
due to weird angles.

THE END OF THE BEGINNING
by SEAN O'CASEY
DIRECTED by DENISE COLLEY
FIREPLACE UNIT
SCALE $\frac{1}{8}" = 1'-0"$



THE END OF THE BEGINNING
 by SEAN O'CASEY
 directed by DENISE COFFEY
 designed by TREVOR PARSONS

- 14
- 13
- 12
- 11
- 10 BALCONY
- 9
- 8 BORDER
- 7
- 6 LEGS
- 5
- 4 W/ LK
- 3 LEGS
- 2
- 1



move US door towards C.

table + chair wt. of Denny.

THE END OF THE BEGINNING
 by SEAN O'CASEY
 DIRECTED BY DENISE COFFEY
 DESIGNED BY TREVOR PARSONS