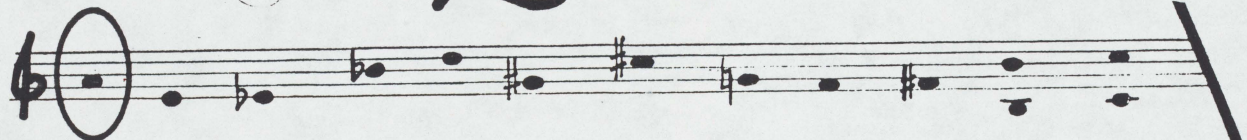


①



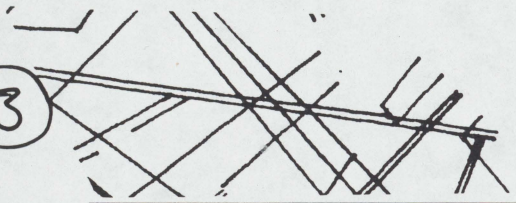
believin

held in +L

②



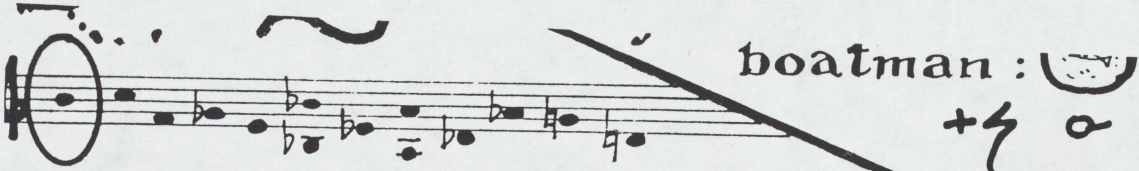
③



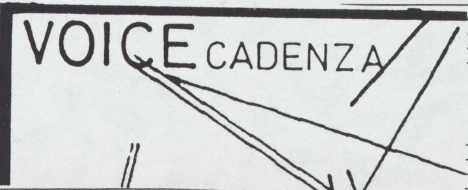
④



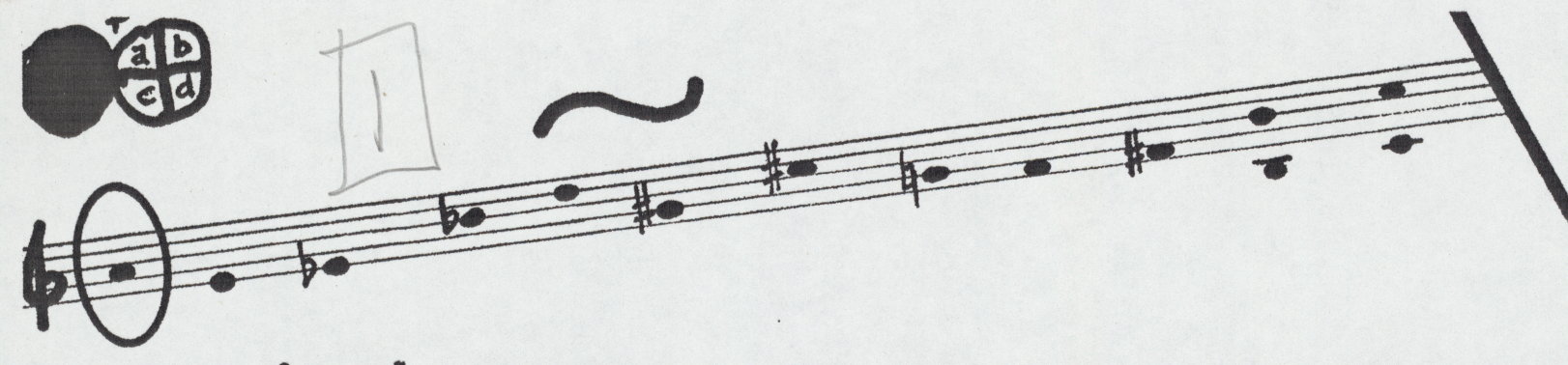
⑤



boatman :



not dot



held. in the last part of the earth plane:

soft fire

they should be contemplated as such: erotically playful movements

unfolding of love

I have crossed by the grace of the boatman:



why not dot

it nowever.

dont

whether or not

why

not

?

?

?

?

?

?

?

plum song

dum crum flum

believing

haveth high morning

in an unbroken radiance

break

dark of light

from



make 6

prayer...

monumental mime rime to to

halving but by a -

mystery

fisker - thirster

S

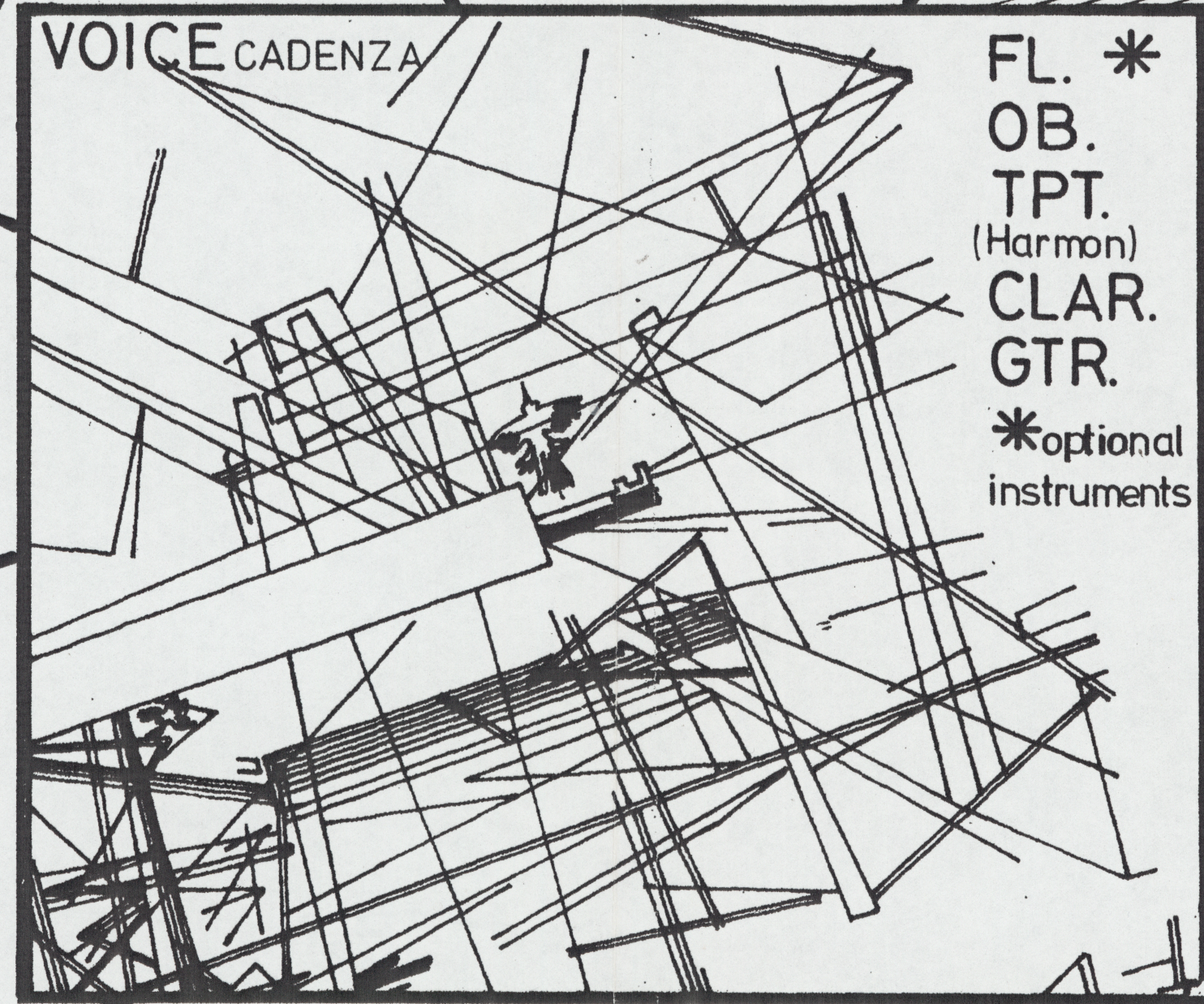
Life • love •

little laughing....

toppot

.thought.

SOLO INSTRUMENT and/or wordless vocal



VOICE CADENZA

FL. \* OB. TPT. (Harmon) CLAR. GTR. \*optional instruments

slow slam

half time for leaf

hellwater let leaf

hãlfe leng

halfer punner pie man

shlom itme

leaf me a peep

and see



brighter

lifeleng

flyprong

lef leave

op

öss

söch tight

black clack

shepsh

ferfechen puddle me

sacksitter

jillysillytuppence bowl of night

λ: