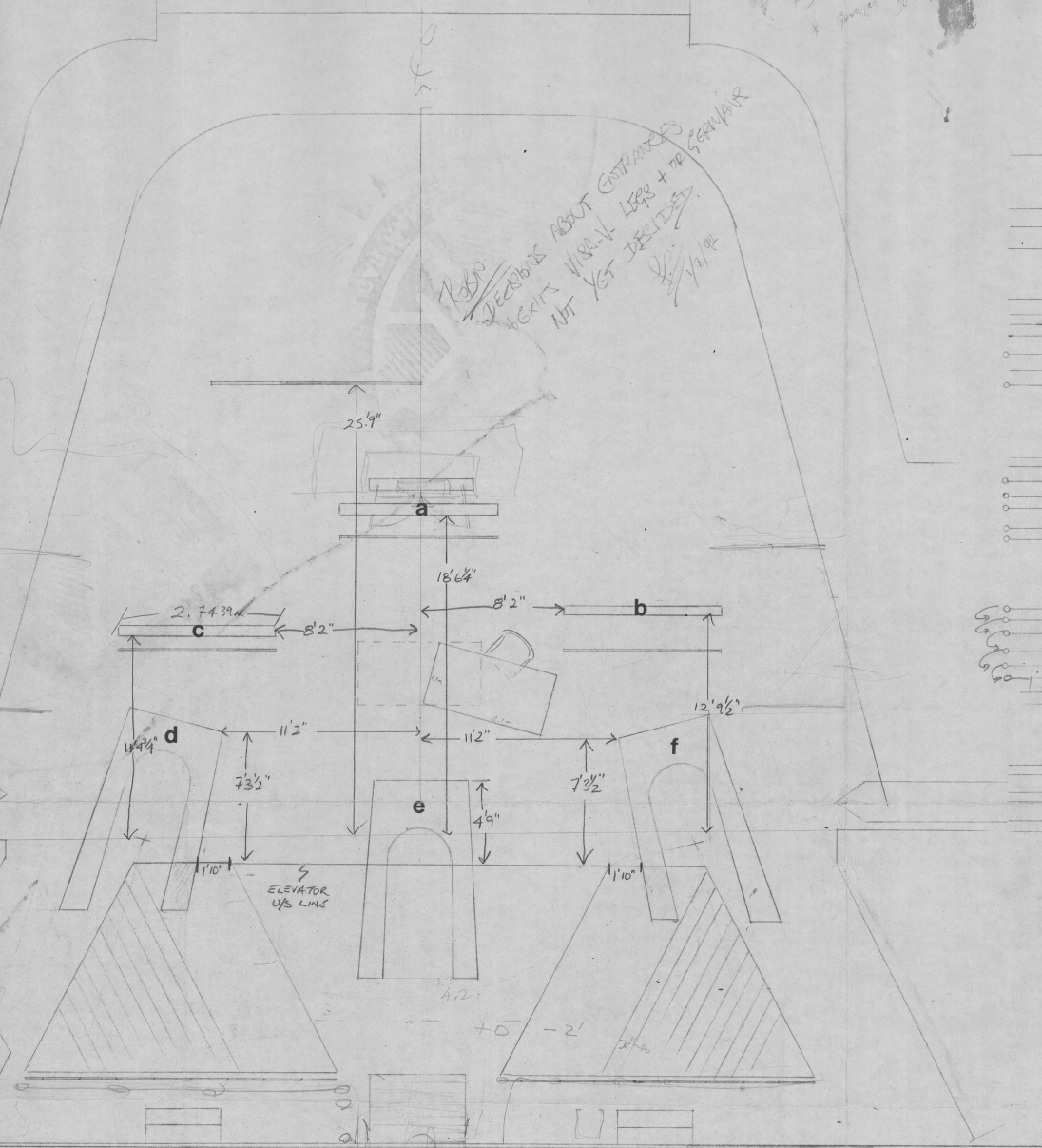


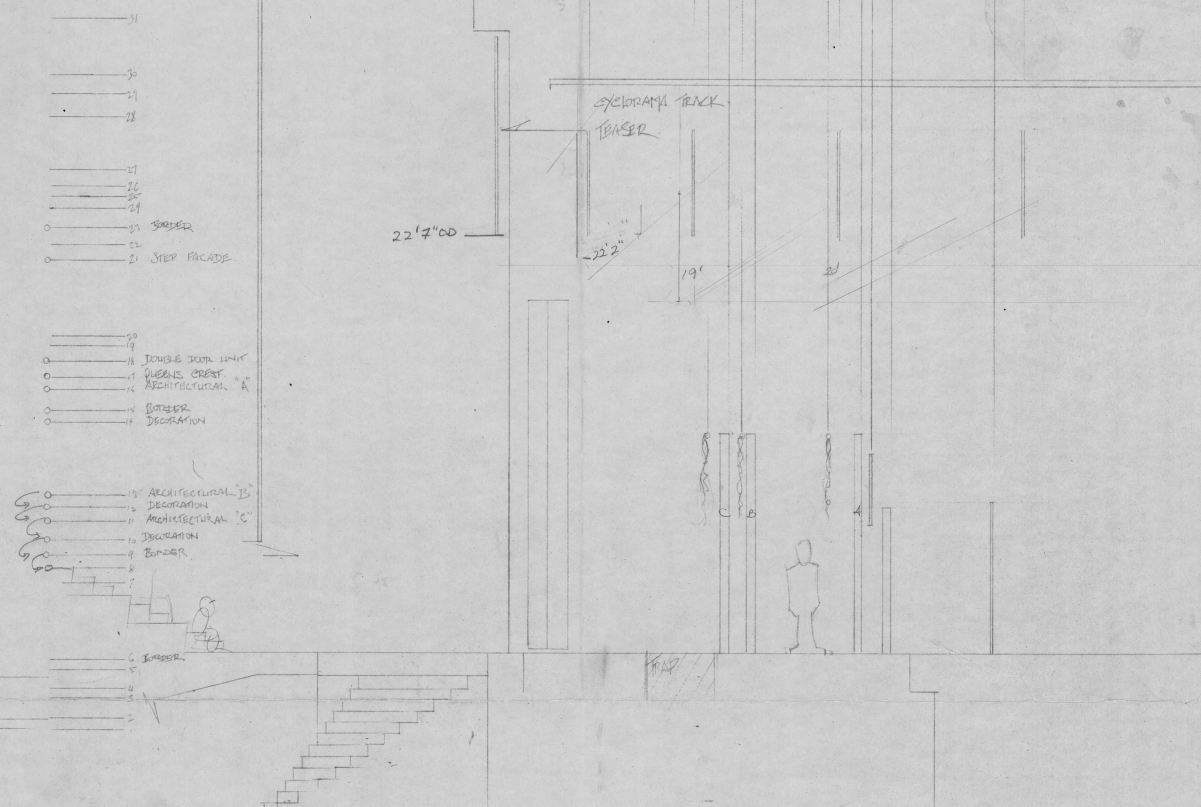
JAMES DUNN THEATRE  
FLOOR PLANS

FLOOR PLAN + SIDE ELEVATION  
SCALE 2 CM = 1 M.

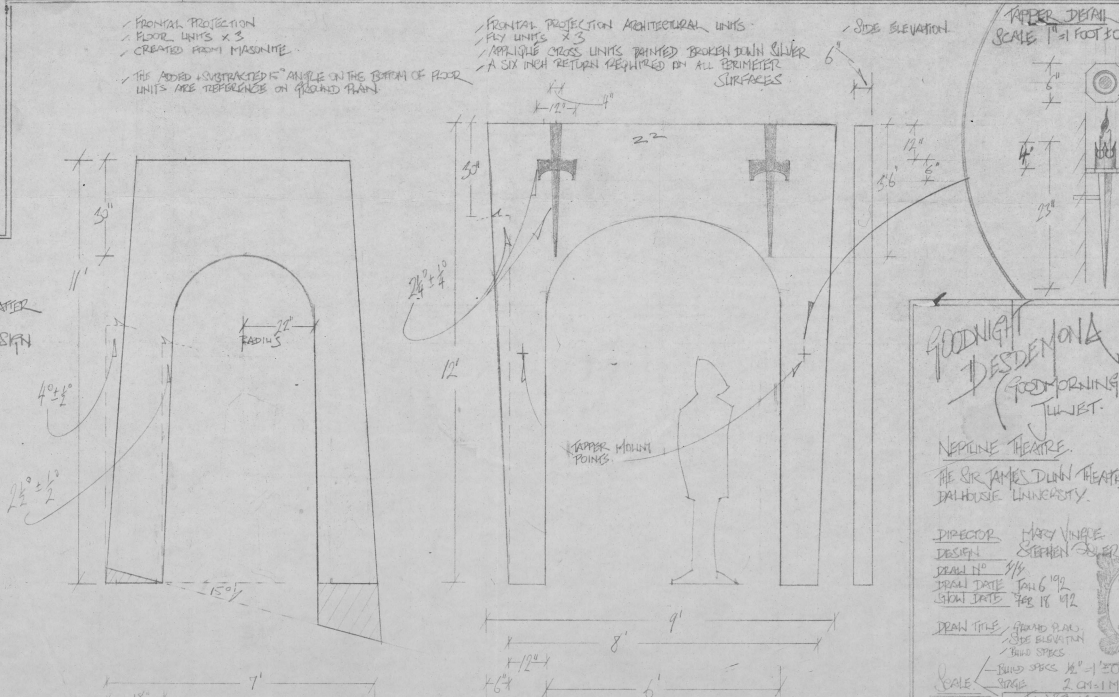
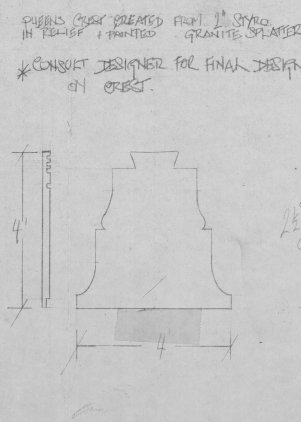
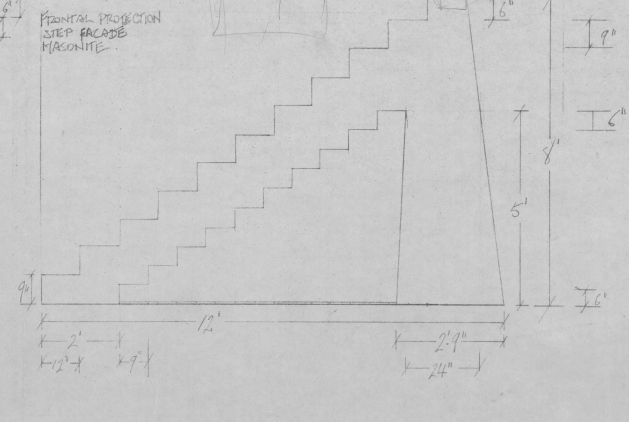
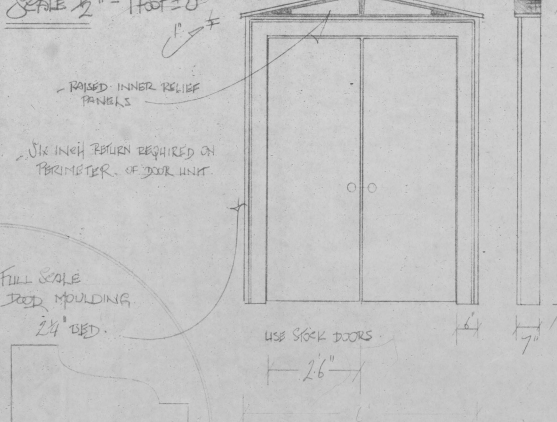
BOTH THE COOP SLABS + JILLIETS BED  
ARE SHED 3-D RECTANGULARS MEASURING  
7' LONG X 2'9" WIDE X 20" HIGH  
AND ROCK WHEELED. PAINTED LIKE  
UNITS A, B, + C.



SIDE ELEVATION



BUILD SPECS  
SCALE 1/2" = 1 FOOT ± 0"



**GOODNIGHT DESERONA**  
(GOODMORNING)  
THEATRE

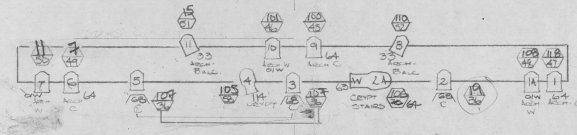
NEOLINE THEATRE  
THE SIR JAMES DUNN THEATRE  
DUNLOP UNIVERSITY

DIRECTOR: MARY VINCE  
DESIGN: STEPHEN GUYER

DRAWN BY: JAMES DUNN  
SCALE: 2 CM = 1 M

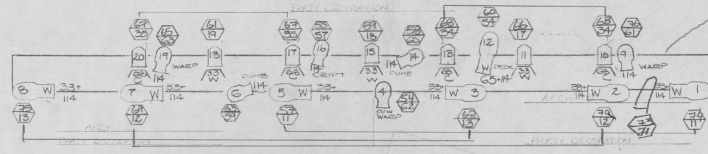
PATCH  
 140 JUNE 90  
 95 169 DR SR  
 94 180 DR SL  
 170

11 fies.  
 1 GY 9  
 1 265 W



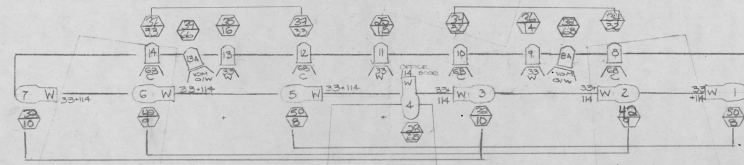
#0 BRIDGE TRIM HEIGHT 24  
 13 cir

7 fies.  
 6 GY 9  
 7 265 W



#2 BRIDGE TRIM HEIGHT 24  
 5 cir (52 feet)

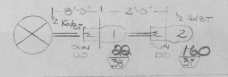
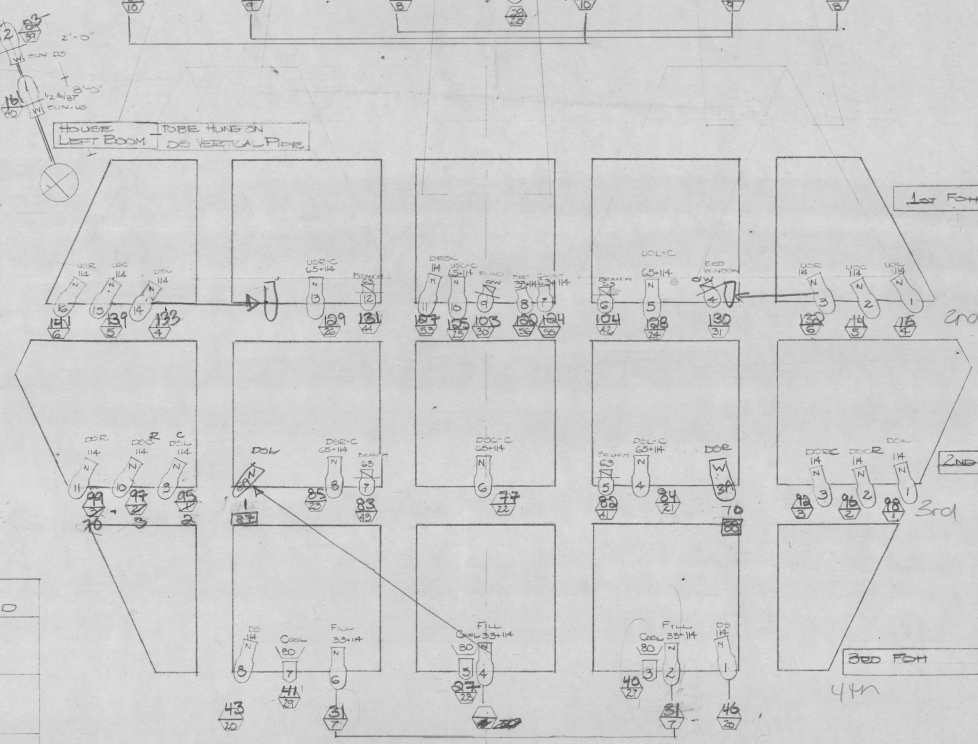
9 fies.  
 7 265 W



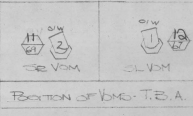
#1 BRIDGE TRIM HEIGHT 24  
 11 cir (52 feet)

COLOUR CUTTING LIST

CODE	FRAME SIZE	
	G9/616/263	Pat 223
R33	16	7
R63	5	
R64		3
R65	7	
R30		2
1/2 R 16/87	4	
R14	47	
R68		11



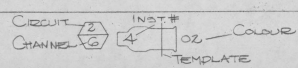
HOUSE RIGHT BOOM -  
 TO BE HUNG ON  
 VERTICAL PIPE



BOTTOM OF BUNG TIE A.

LEGEND

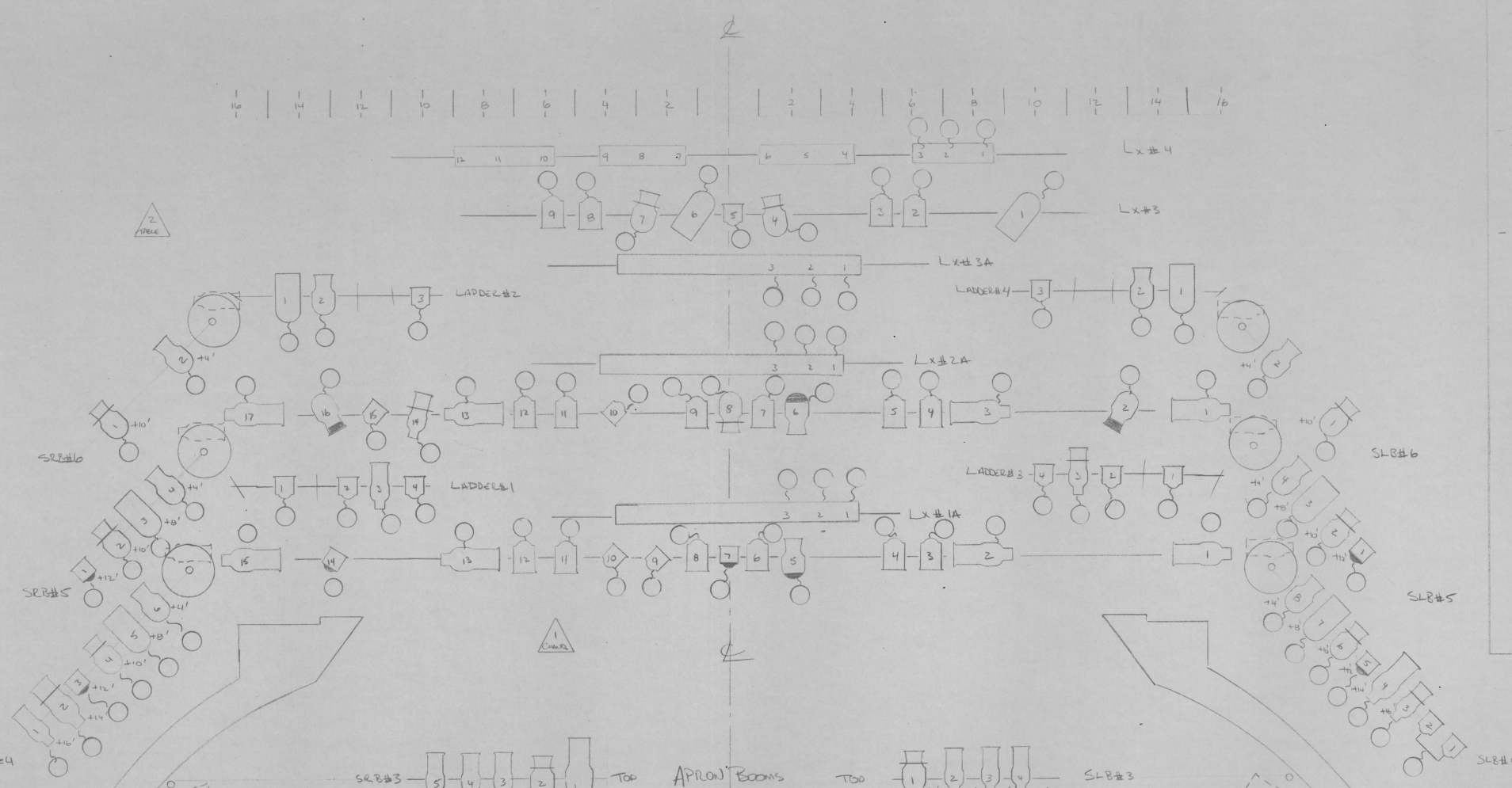
SYMBOL	DESCRIPTION	# USED
	Pat 263 - 1KW	42
	G13 - 750W	9
	G12 - 750W	6
	Pat 223 - 1KW	33
	50000 - 1KW	0



GOODNIGHT DEEDEMONA (GOOD MORNING JULET)  
 NEPTUNE THEATRE - DUNN THEATRE  
 DIRECTOR: MARY VINGOE  
 SET DESIGN: STEPHEN OSLER  
 LIGHTING DESIGN: LESLEY WILKINSON  
 SCALE: 1/4" = 1'-0" DATE: FEB. , 1992



- 26
- 25
- 24 BACKDROP
- 22 No. 4 LEGS
- 21
- 20 No. 4 ELECTRICS
- 19 No. 3 ELECTRICS
- 18 No. 3A ELECTRICS
- 17 No. 2 LEGS & BORDER
- 16 DOOR
- 15 US LADDERS
- 14
- 13 No. 2 LEGS & BORDER
- 11 No. 2A ELECTRICS
- 10 No. 2 ELECTRICS
- 9 DS LADDERS
- 8 GAUZE
- 7 No. 1 LEGS
- 6 No. 1 BORDER
- 5 No. 1A ELECTRICS
- 4 No. 1 ELECTRICS
- 3
- 2 CHANDELIER
- 1

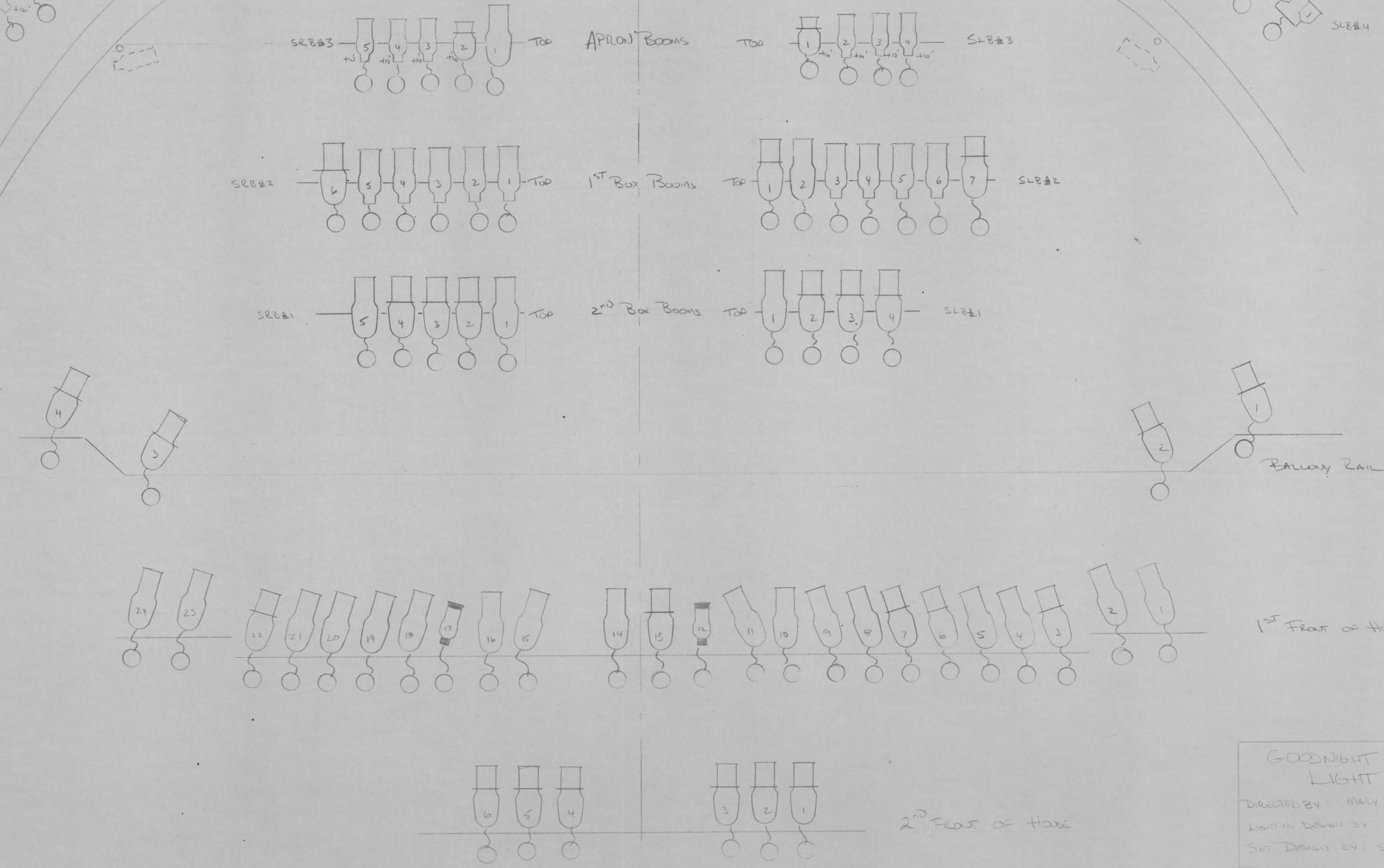


- Lx 1A, 2A, 3A, A26 to be rigidly fixed to Lx 1, 2 and 3. The spacing between the two should be kept to a minimum.

- Fume stands are to be located just US of their respective legs.

- Chandeliers & Table practicals each require 4 dimmers.

- LEGEND**
- 52 — GEL NUMBER (ROKAWK)
  - GOBO
  - 1 — INSTRUMENT NUMBER
  - DIMMER NUMBER
  - BX9, 1kw
  - 2x12, 1kw
  - 6x9, 750w
  - 6x12, 750w
  - 6x16, 750w
  - COOLSPAN 40", 1kw
  - 6x22, 1kw
  - 8" FRESNEL, 1kw
  - 6" FRESNEL, 1500w
  - 6" FRESNEL, 750w
  - PAR64 MFL, 1kw
  - IRIS 3, 1kw
  - X-RAY, 1500w



**GOODNIGHT DESDE MONA LIGHT PLOT**

DIRECTED BY: MARY VINDO

LIGHTS DESIGNED BY: BEAN FINCOTT

SET DESIGN BY: STEPHEN OBER

DRAWN: MARCO/AS

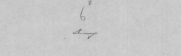
SCALE: 1/2" = 1'



CRAFT + BED TRUCKS.

SCALE 1/2" = 1 FOOT ± 0"

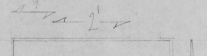
AERIAL VIEW CRAFT



GOLDEN HAND TRAP



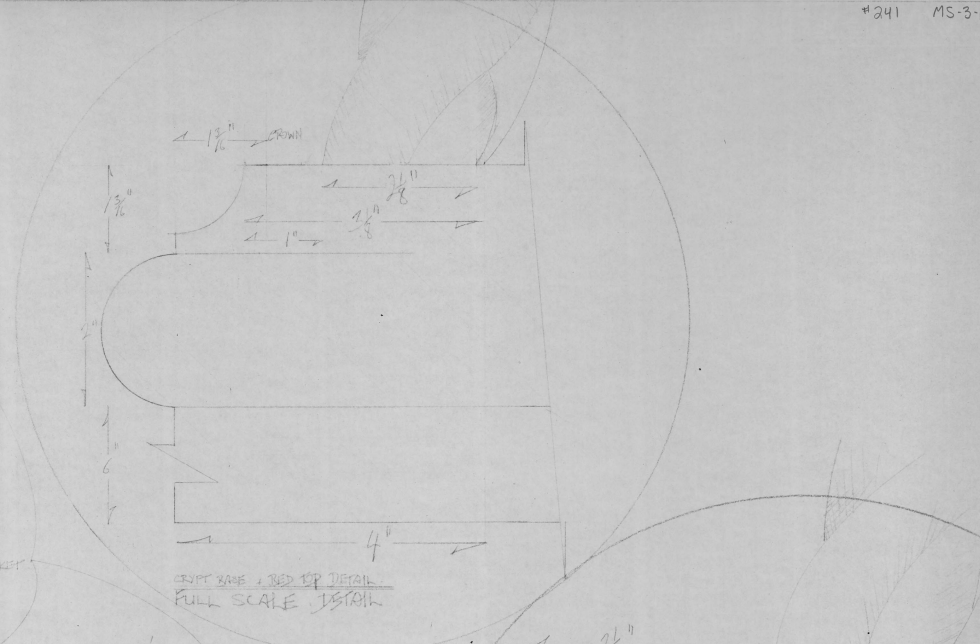
AERIAL VIEW BED



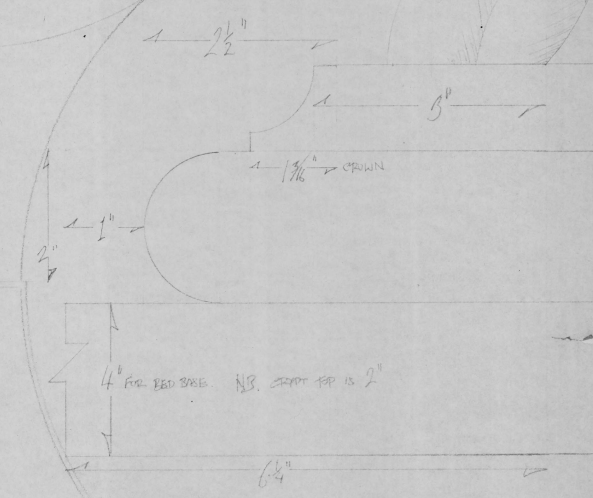
BED TRAP



\*NB THE CRAFT IS 3" SHALLOWER THAN THE BED TRUCK



CRAFT BASE + BED TOP DETAIL FULL SCALE DETAIL

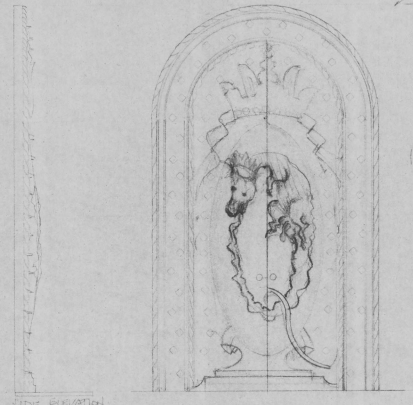


BED CASE + CRAFT TOP

\* THE BED CASE BOTTOM PIECE IS 4"  
\* THE CRAFT TOP PIECE IS 2"

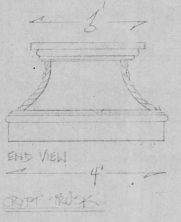
FULL SCALE DETAIL

\* THE DOOR FACADE WILL NEED FINISHED DETAIL GIVEN EDGE OF APPROVAL. DATE 22/93

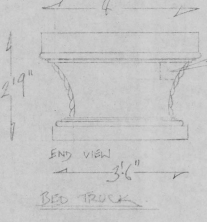
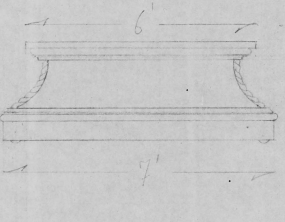


SIDE ELEVATION

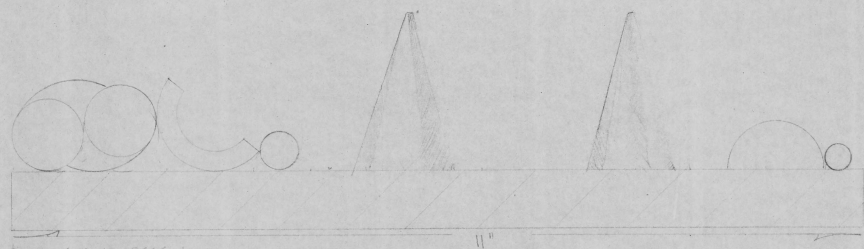
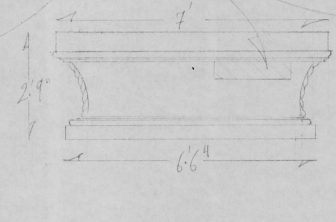
DOOR FRONTAL SCALE 1/2" = 1 FOOT ± 0"



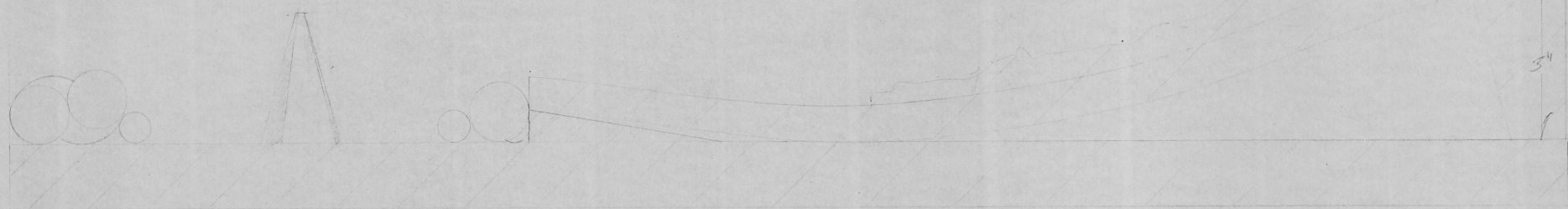
END VIEW CRAFT TRUCK



END VIEW BED TRUCK



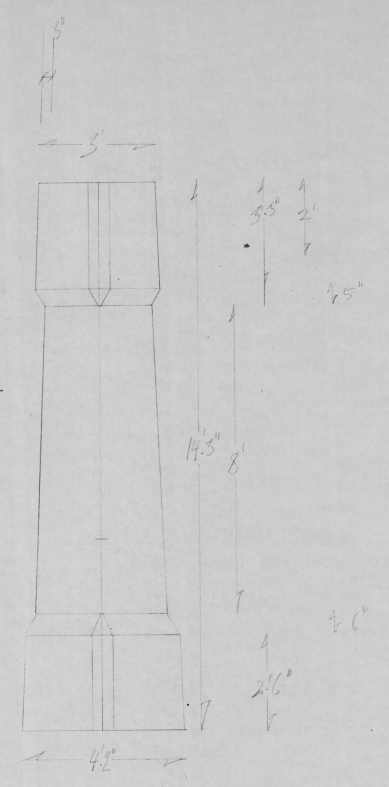
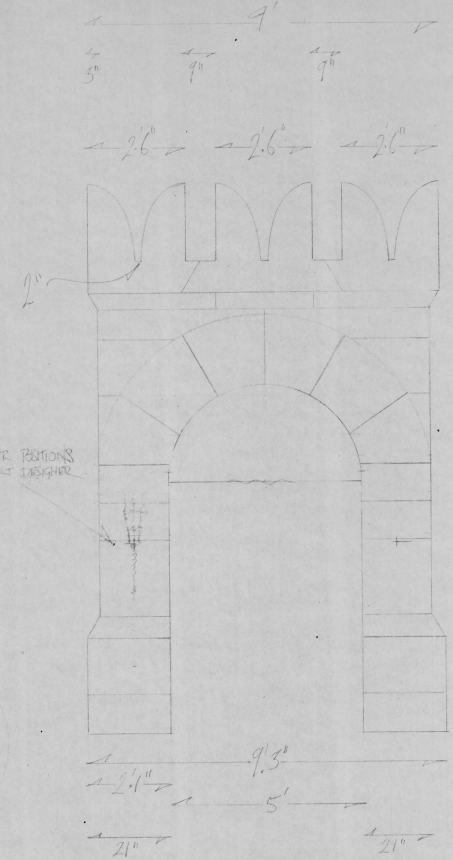
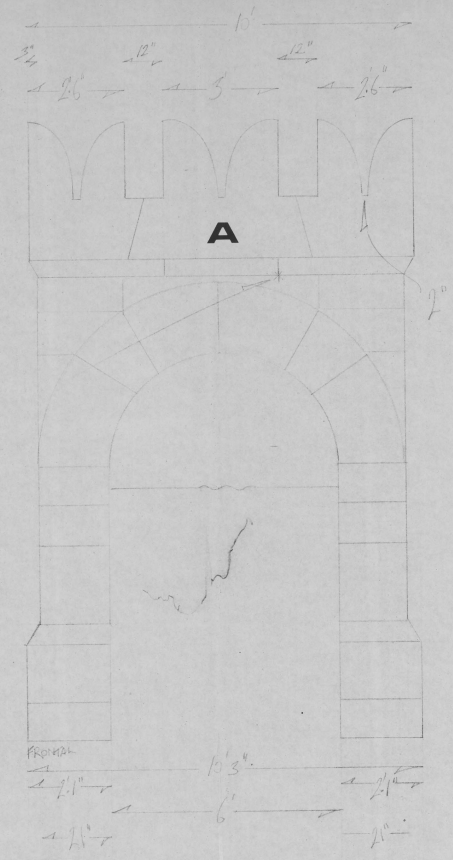
DOOR FRAME SECTION FULL SCALE



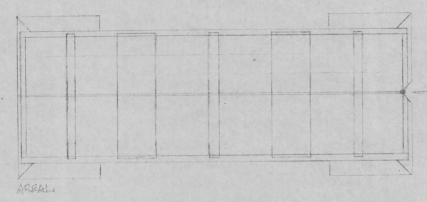
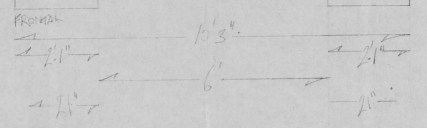
DOOR SECTION FULL SCALE

DATE	MAY 1993	DRAWN BY	SOLO
DRAWN BY	SOLO	SCALE	1/2" = 1 FOOT ± 0"
PROJECT	JOHN L. WISEMAN	PROJECT	SOLO
PROJECT	WISDOM	DRAWN BY	SOLO
PROJECT	WISDOM	SCALE	1/2" = 1 FOOT ± 0"
PROJECT	WISDOM	SCALE	1/2" = 1 FOOT ± 0"

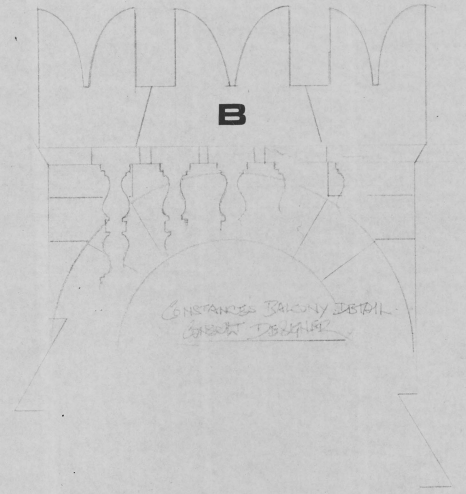
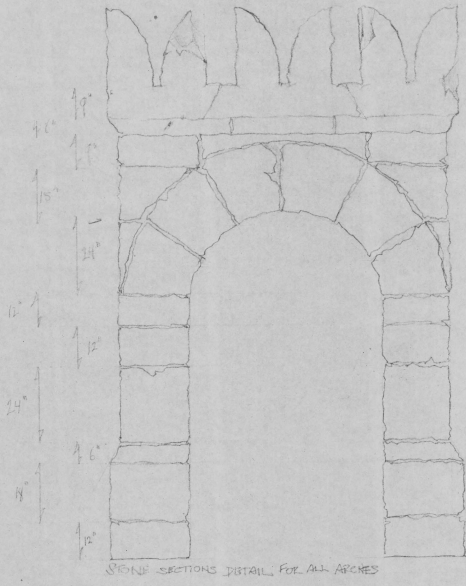
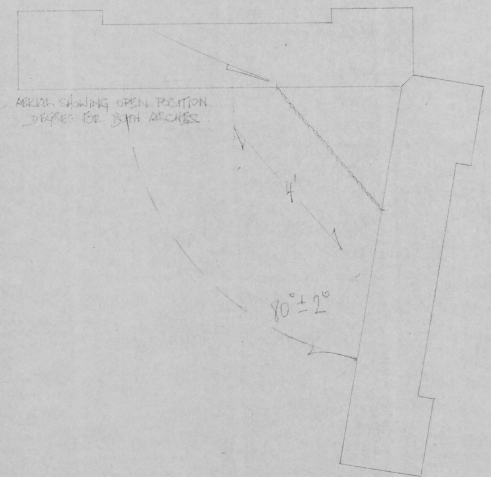




STOP CAN  
TO THE POSITION



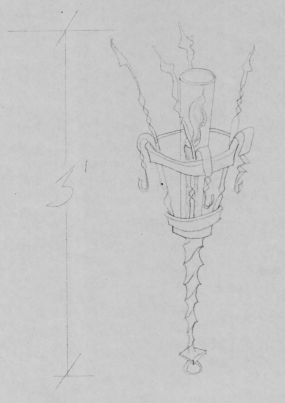
NOTE: DIMENSIONS TO ALLOW FOR  
OPEN PORTIONS.



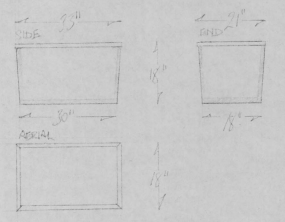
TAPER DETAIL

REQUIRE EIGHT TAPERS.

THIS RENDERING HAS BEEN CREATED IN AN  
UNKNOWN SCALE - PLEASE CONSULT ARCHITECT



WASTE BASKET DETAILS



CHandelier

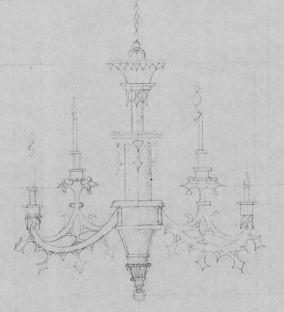


CHART DESIGNER FOR FINAL SCALE + REFERENCE

#1/11  
 PROJECT DESIGNER  
 VENTURE THEATRE  
 DIRECTOR MARY WILSON  
 DESIGNER JOHN ROYER  
 ARCHITECTS PROPERTIES JOHN WILSON  
 DRAWN BY S. OSBERN  
 SCALE 1/2" = 1 FOOT 0"  
 DATE MARCH 1974  
 FINALS

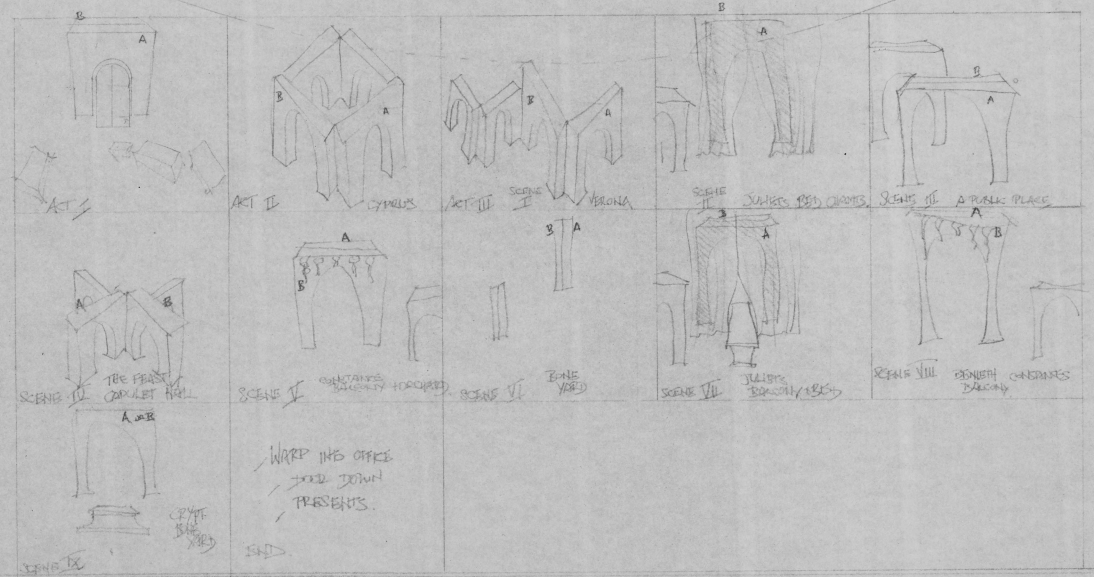
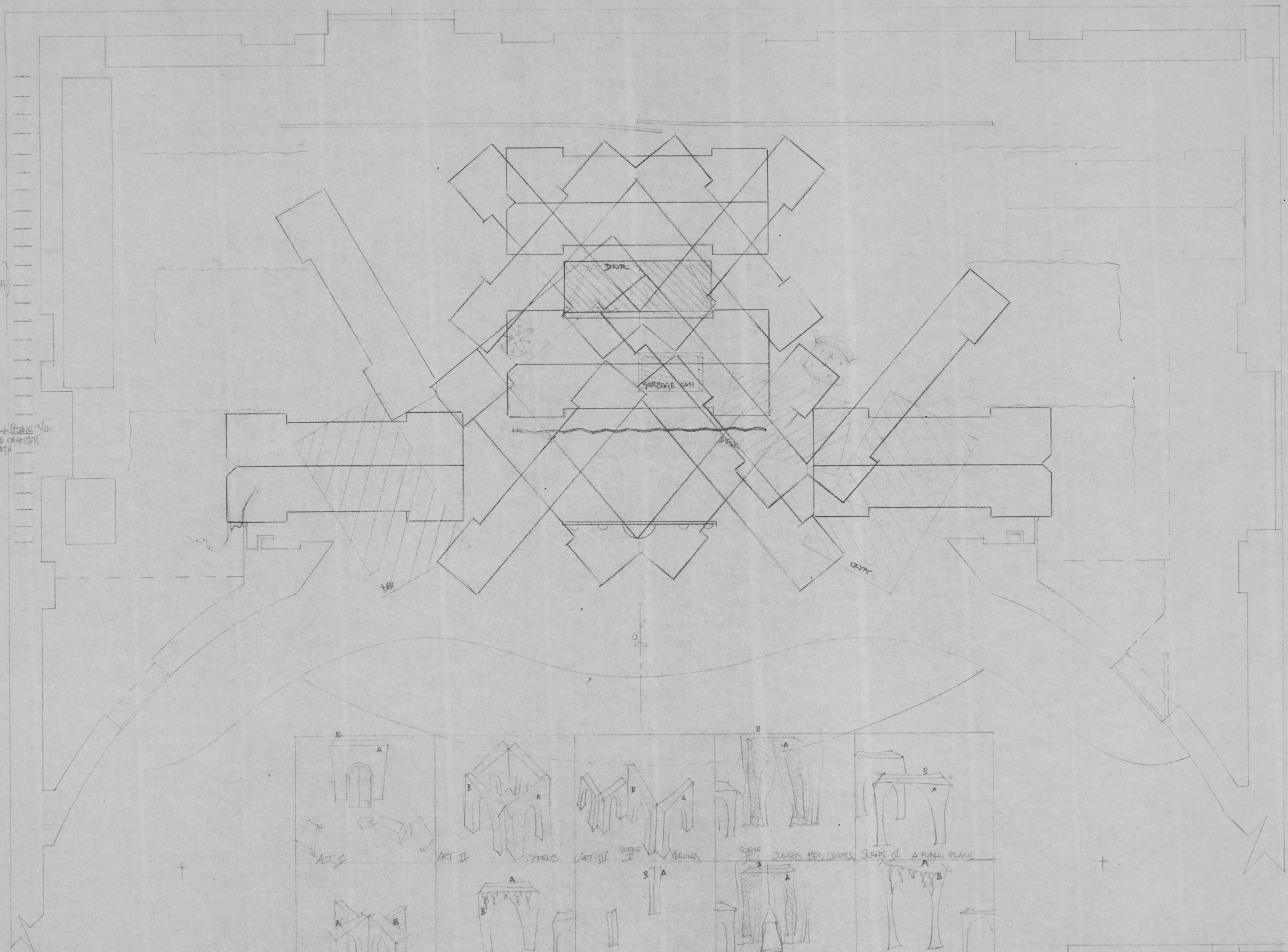
LS # 25  
UP SIG. PAINTED GCE  
+ LEGS + BORDER

LS # 16 DOOR  
LS # 15 FLOOR DUSTON  
LS # 15 LEGS (PAINTED II SET)

LS # 12 BOEMER

LS # 8 LEGS + BORDER  
LS # 7 ACT III SCENE II - SCALE VII  
SILETS 3RD CHAIRS  
CURTAIN 1 1/2" HIGH

LS # 2 CHANDELLER  
ACT III SCENE II



F/III MIDNIGHT TERRENCE  
NEWMARKET THEATRE

PROJ NUMBER

DIRECTOR MAC VINGIE  
PLANNING FLOOR PLAN  
DRAWN BY SOKOR

DESIGNER SOKOR  
DRAWN DATE JAN 22 / 13  
SIGN DATE MARCH 12

SCALE 1/2" = 1 FOOT 10"

FINALS