

NARNIA  
PRELIMINARY  
DRAWINGS  
1995

NEPTUNE CHRISTMAS  
SHOW/DANN THEATRE  
TOTAL COSTUMES 43



PROFESSOR DIGORY KIRKE

MRS. MACREADY

SUSAN

MR. BEAVER

LUCY

MRS. BEAVER

EDMUND

OWL

PETER

FOX



PERNIS WOLF (x3)

HAG (x2)

MR. HUMMUS

DWARF (x2)

SPECTRE

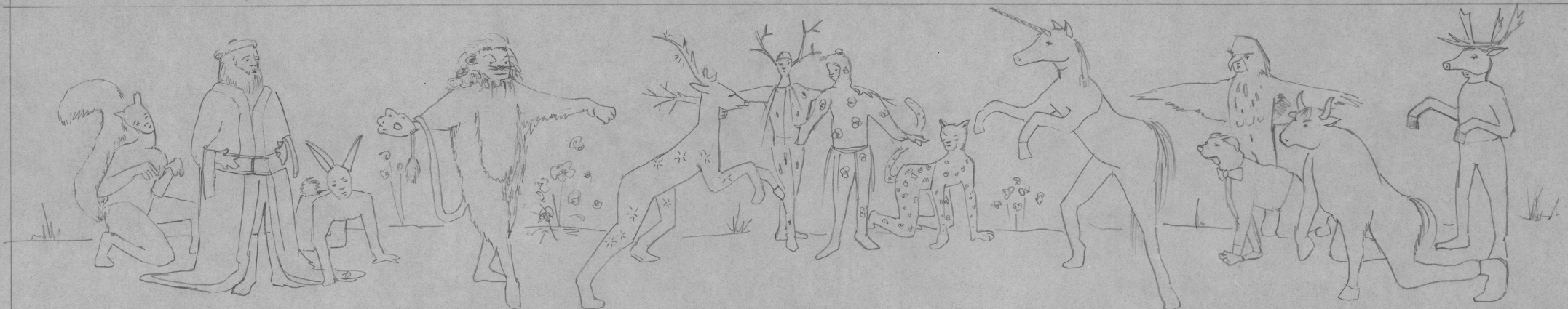
HAG II

THE WHITE WITCH

GORGON

BOGIELE OGRE

THE CRUELLES



SQUIRREL

FATHER CHRISTMAS

RABBIT

ASLAN

THE WHITE STAG

DRYADS (x2)

LEOPARD

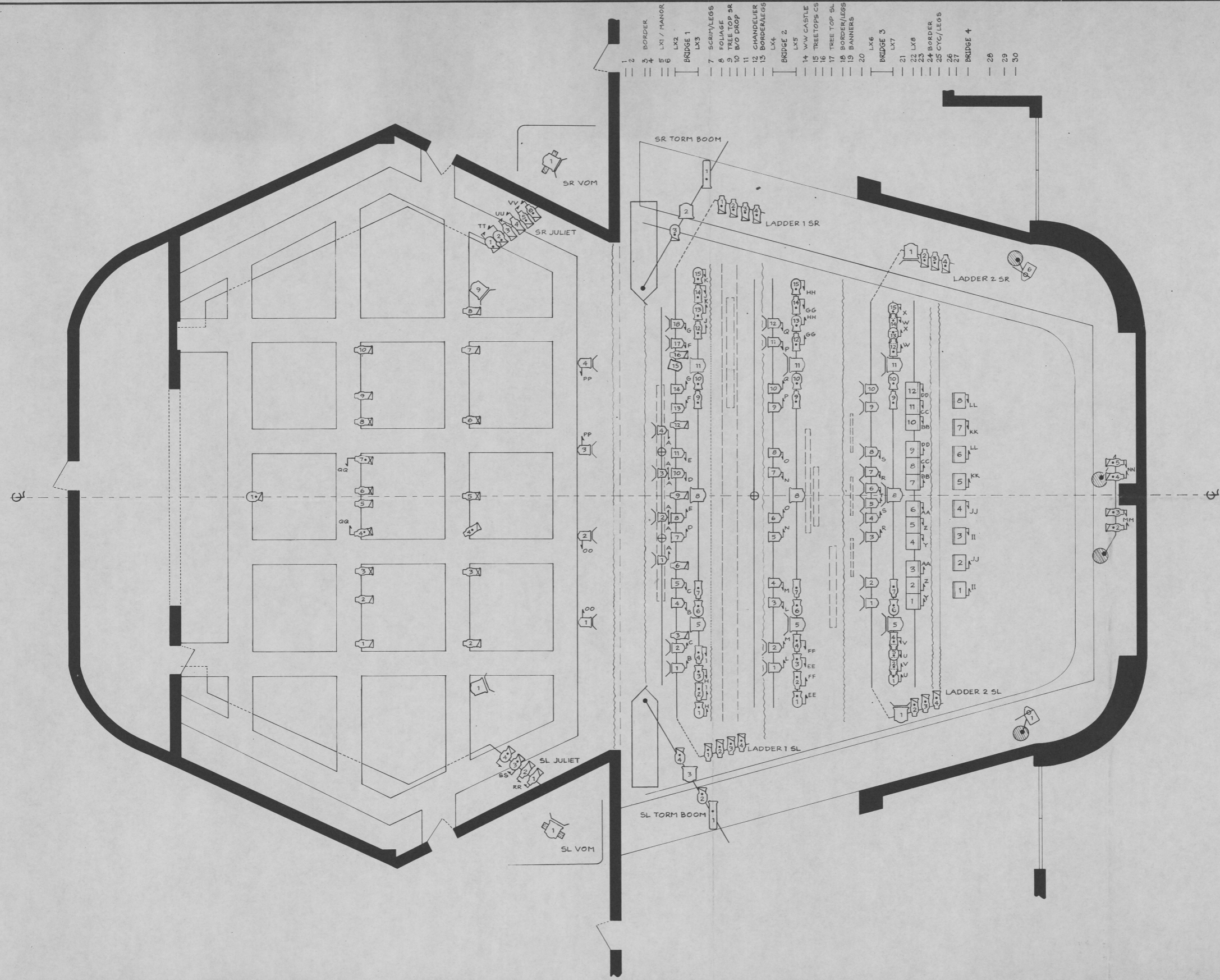
UNICORN

DOG

EAGLE

BULL

REINDEER (x4)



- 2 BORDER
- 3 LX1 / MANOR
- 4 LX2
- 5 LX3
- 6 BRIDGE 1
- 7 SCRIP/LEGS
- 8 FOLIAGE
- 9 TREE TOP SR
- 10 BVO DROP
- 11 CHANDELIER
- 12 BORDER/LEGS
- 13 BRIDGE 2
- 14 VV CASTLE
- 15 TREETOPS CS
- 16 TREE TOP SL
- 17 BORDER/LEGS
- 18 BANNERS
- 19
- 20 LX6
- 21 BRIDGE 3
- 22 LX7
- 23 LX8
- 24 BORDER
- 25 CYC/LEGS
- 26
- 27
- 28 BRIDGE 4
- 29
- 30

- LEGEND
- STRAND 123 FRESNEL 500W
  - STRAND 3380 FRESNEL 1KW
  - STRAND 223 FRESNEL 1KW
  - ALTMAN 360Q 6X9 ERS 750W
  - ALTMAN 360Q 6X12 ERS 750W
  - ALTMAN 360Q 6X16 ERS 750W
  - STRAND 263W ERS 1KW
  - STRAND 263N ERS 1KW
  - PANI-AUSTRIA BP-2 13CM 2KW W/ CUSTOM SLIDE ROTATOR
  - PRACTICAL
  - ORION 1KW
  - IRIS 3 1KW
  - PARALLIPSPHERE 1KW
  - GOBO
  - INSTRUMENT NUMBER
  - Z TWOFER
  - BARN DOOR
  - MASKING
  - FLYING SCENERY

# Narnia 96

Adapted from C. S. Lewis by Jules Tasca

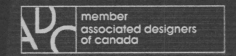
Directed by Jennette White  
 Scenic & Costume Design by D'Arcy Poultney

**Neptune Theatre**  
 Halifax, Nova Scotia

Sir James Dunn Theatre  
 Dalhousie Arts Centre  
 December 7 - 23, 1996

**LIGHTING PLOT**  
 Scale 1/4" = 1' - 0"

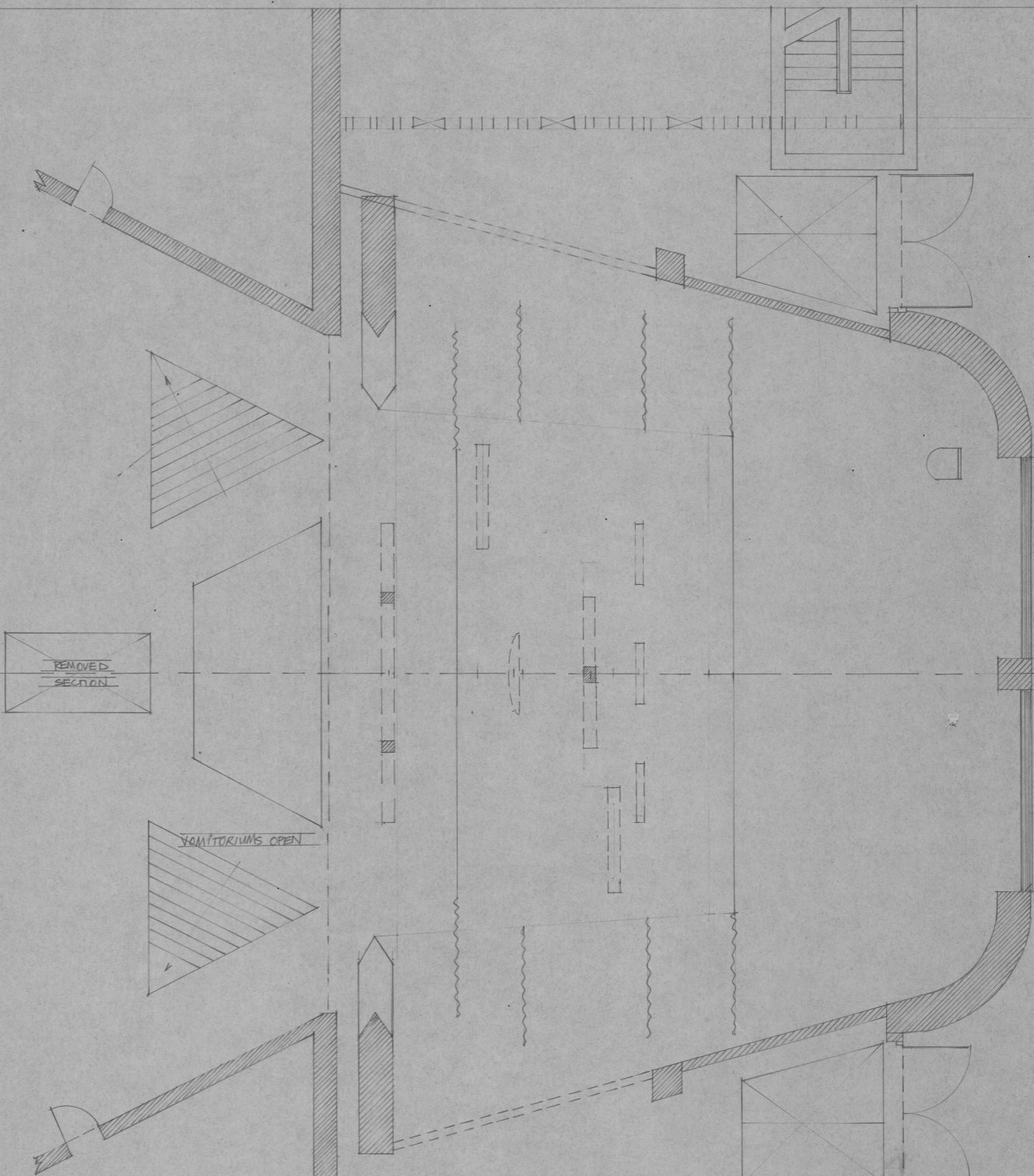
Lighting Design by  
**Philip Cygan**



**Axis Mundi Theatre Production**

96 Seaton St., Toronto, Ontario, Canada  
 416.861.9983 cygmccal@passport.ca

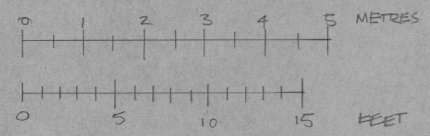
Facility Drawing Prepared by Philip Cygan  
 Axis Mundi Theatre Production © 1996



REMOVED SECTION

VOMITORIUMS OPEN

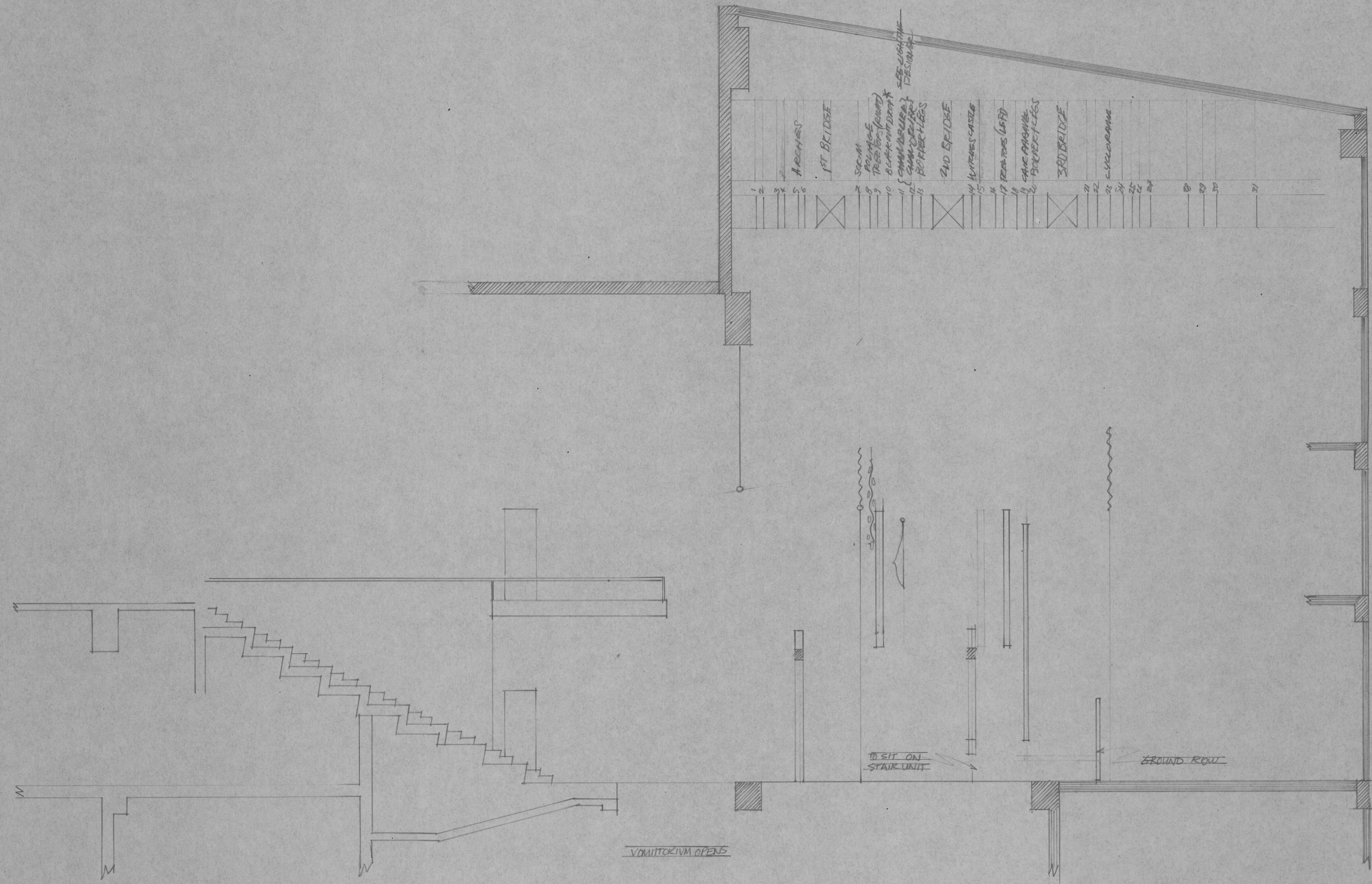
SCALE 1:50 OR 2CM=1M



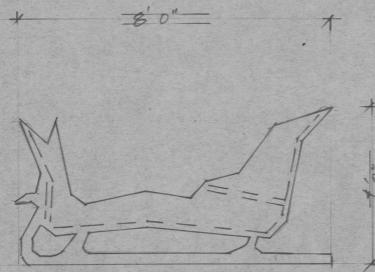
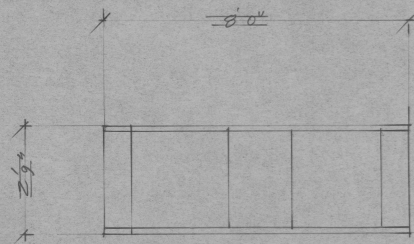
- 1. SCRIM & LEEPS
- 2. FOLLY (RIGHT)
- 3. BANGOR (LEFT)
- 4. CHANDELIER
- 5. BOLDER LEGS
- 1ST BRIDGE
- 2ND BRIDGE
- 3RD BRIDGE
- 4TH BRIDGE
- ARCHES
- COLUMNS

\*BLACK OUT DROP  
MAY NOT BE  
NECESSARY BUT  
COULD BE  
MID STAGE TRAVEL

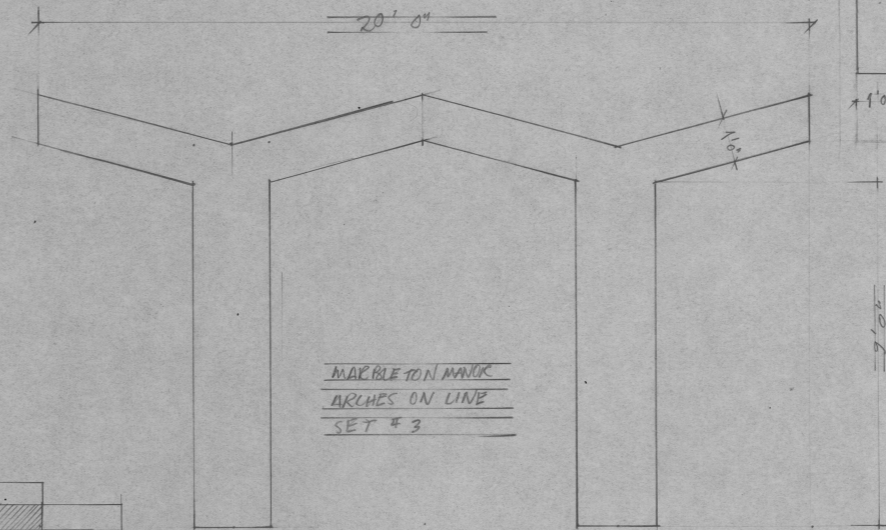
"NARNIA" THE NEPTUNE THEATRE	
SIR JAMES DUNN	FROM METRIC DWGS
GROUND PLAN & FLYING PIECES	
DIRECTOR J WHITE	DESIGNER D FOULINEY
SCALE 1/4" = 10'	OCT 1995
PAGE 1/3	



THE NEPTUNE CHRISTMAS SHOW  
 © SIR JAMES BUNN "NARNIA"  
 ELEVATION (FROM METRIC DWGS)  
 DIRECTOR JEANNETTE WHITE DESIGNED DAVID PAULINEY  
 SCALE  $\frac{1}{4} = 16'$  OCT 1995 PAGE 3/3

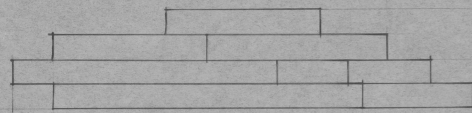
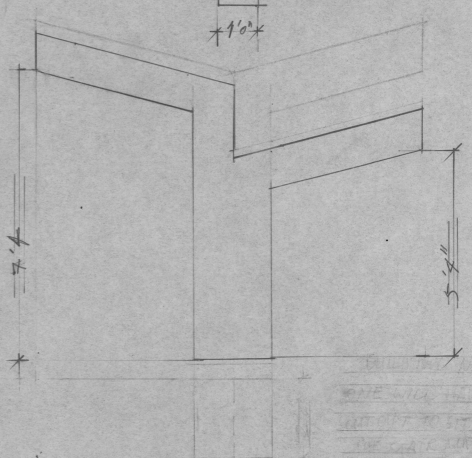


SLEIGH (FOR FIVE)



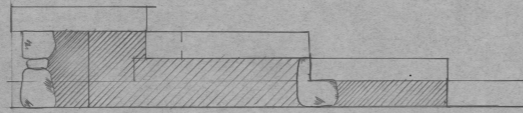
MARBLE TON MAND  
ARCHES ON LINE  
SET # 3

TREE TOPS  
RIGHT AND LEFT  
TO FLY FROM PIPES

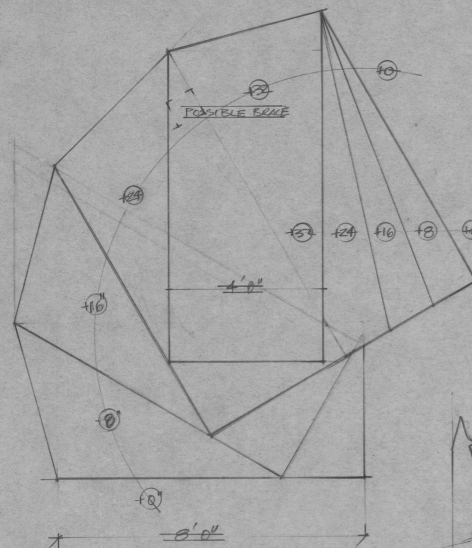
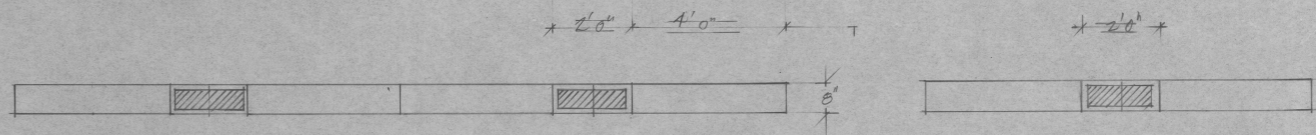


STAIRS/CASTLE ETC

+32"  
+24"  
+16"  
+8"



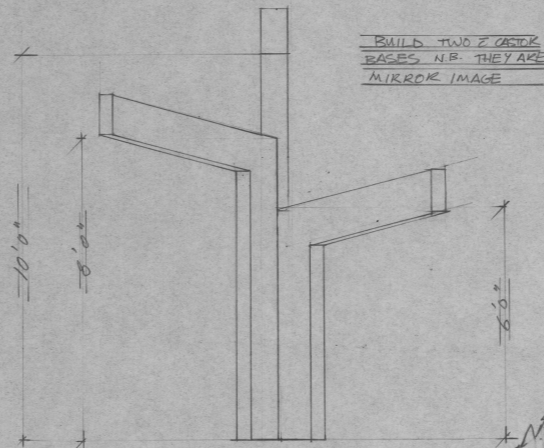
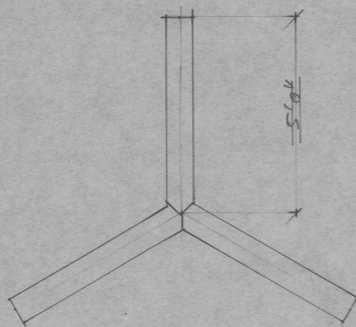
STONE TABLE (BACK)



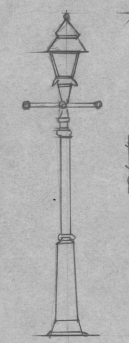
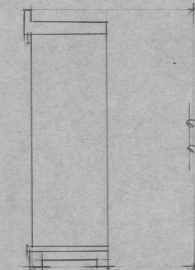
GROUND ROW

NOTE THERE WILL BE A CHANDELIER FROM STOCK USED (IT SHOULD LIGHT UP)

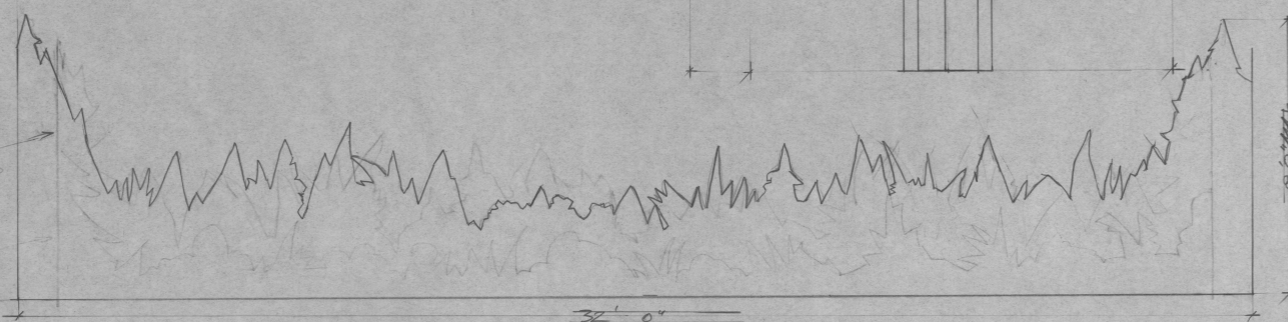
THREE 4X16 PLATS WILL BE HUNG + FLOWN  
THESE PLATS SHOULD BE STOCK {2(4X8)}



WARDROBE ADAPTED FROM STOCK



LAMP POST  
MOVEABLE AND  
PRACTICAL (STOCK)



THE NEPTUNE THEATRE CHRISTMAS SHOW	
© THE TRANN	"NARNIA"
SET PIECES' DESIGN FINALS	
DIRECTOR JENNETTE WHITE	DESIGNER TARCUS POUTINEV
SCALE 1/2"=1'0"	AUG 1995
	PAGE 3/3