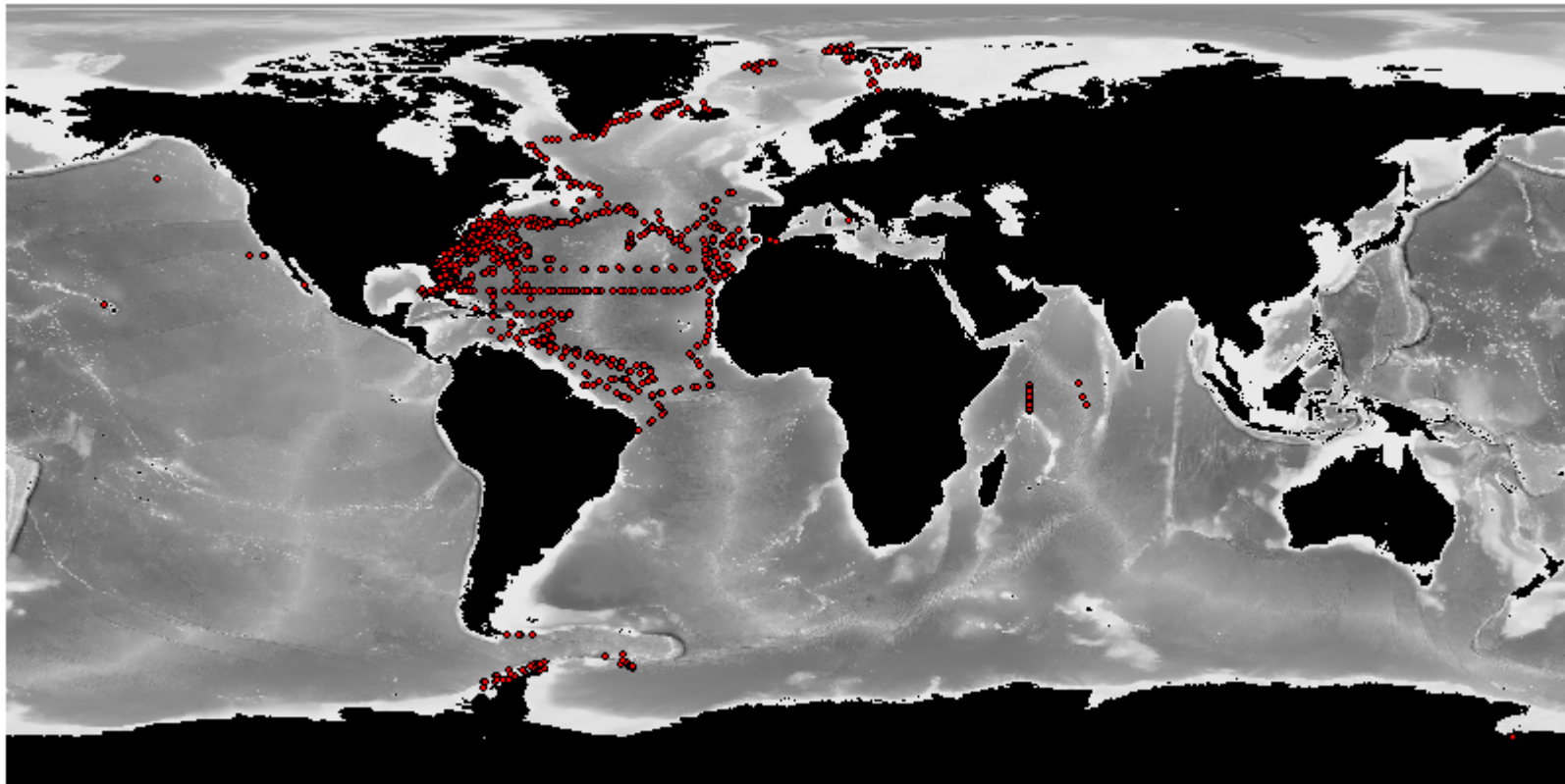
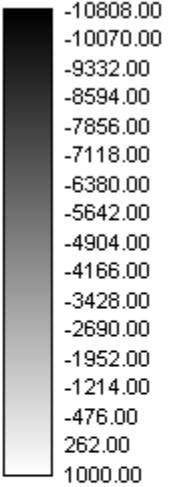


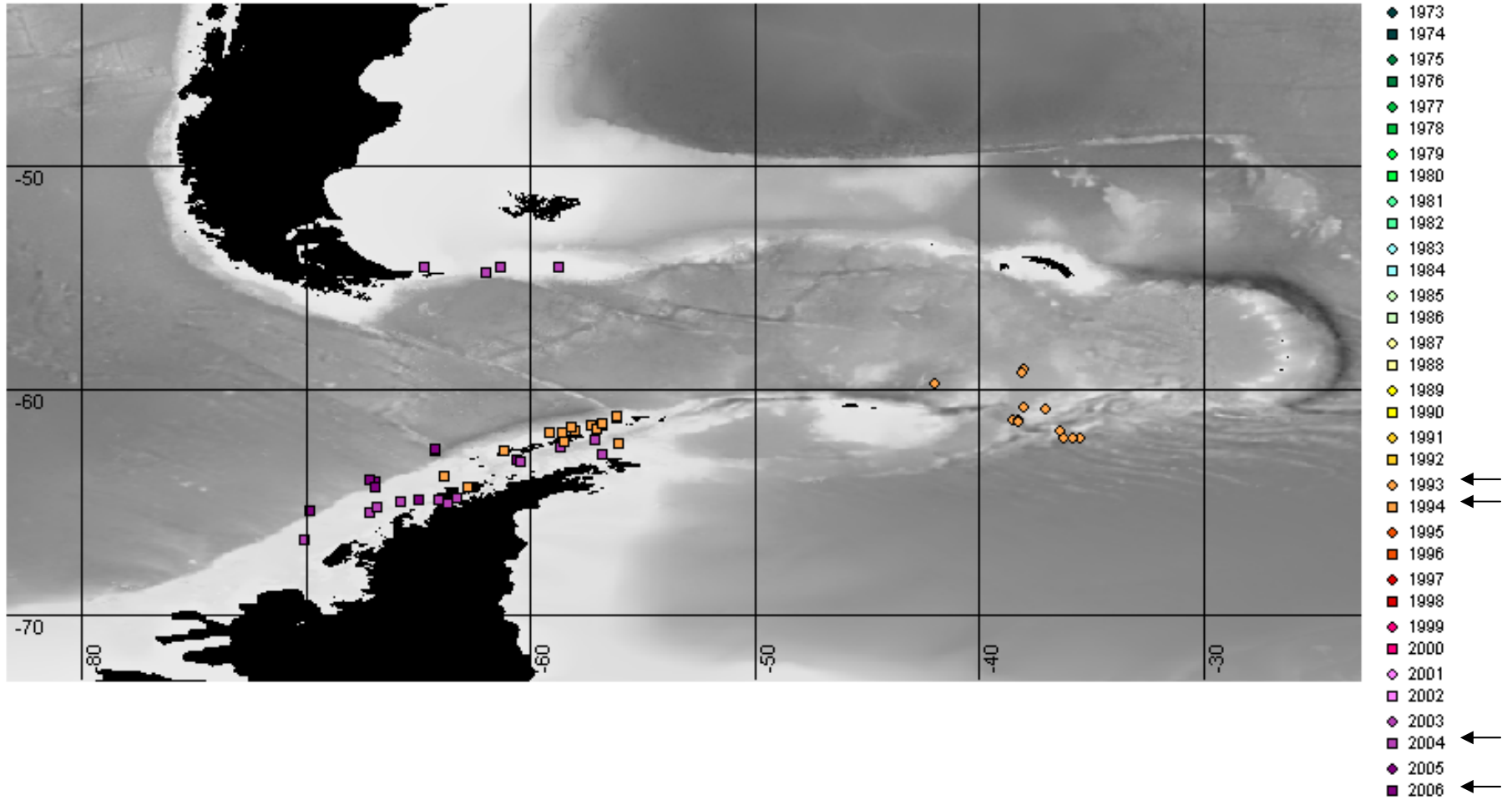
Dives we have: 1913 (1801 with positions) - May 26, 2006



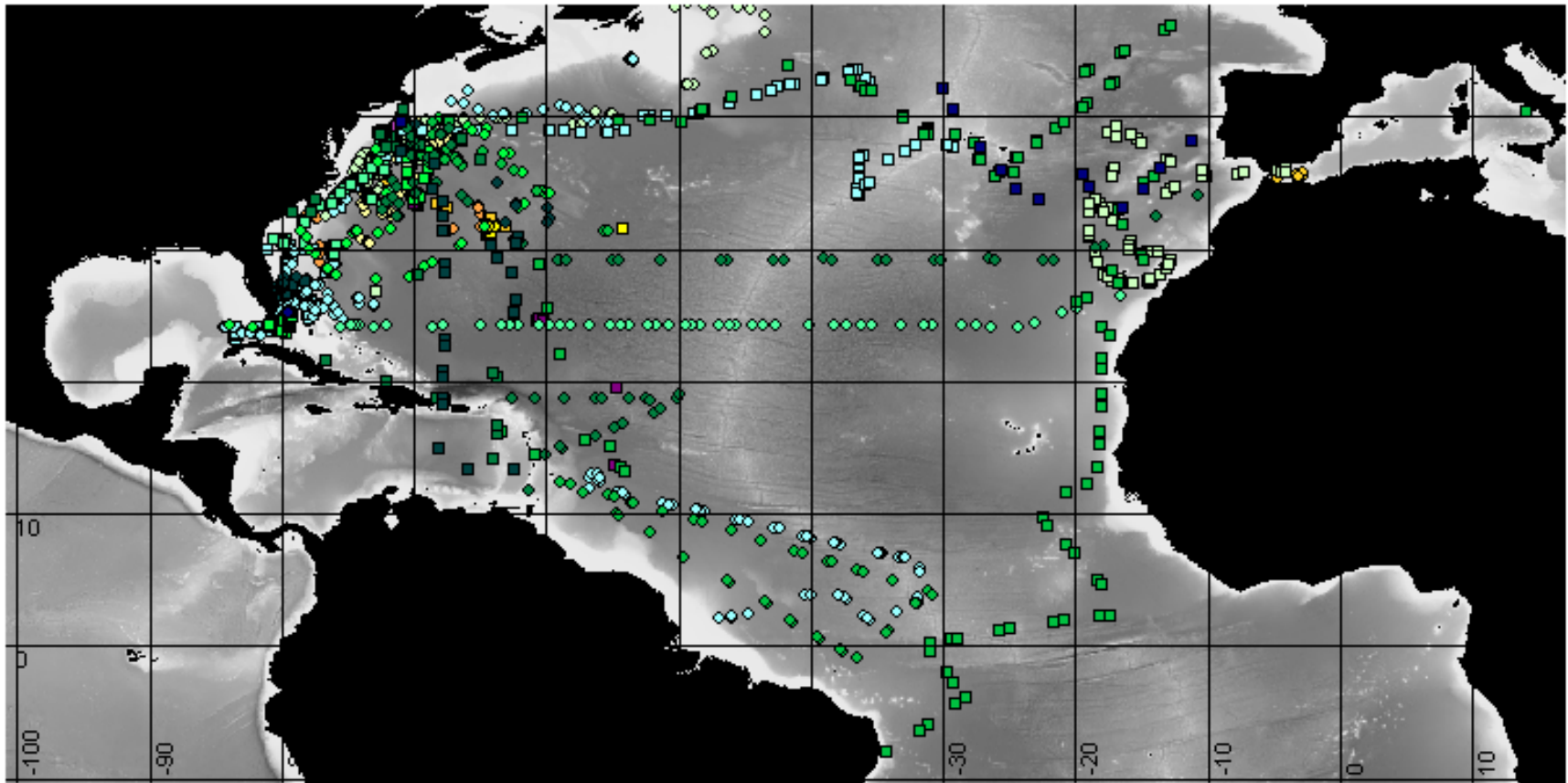
Depth (m)



Southern Ocean

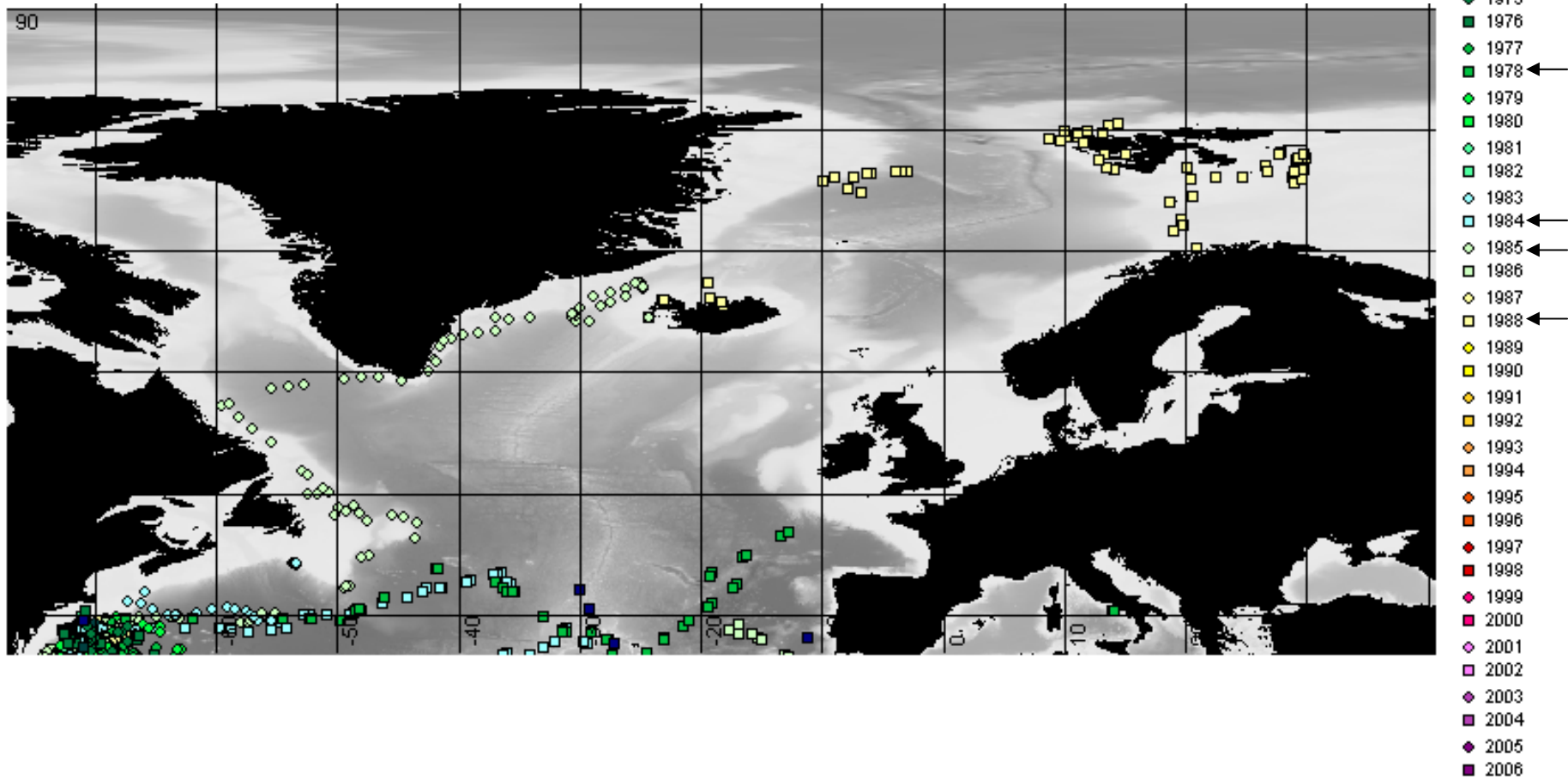


North Atlantic

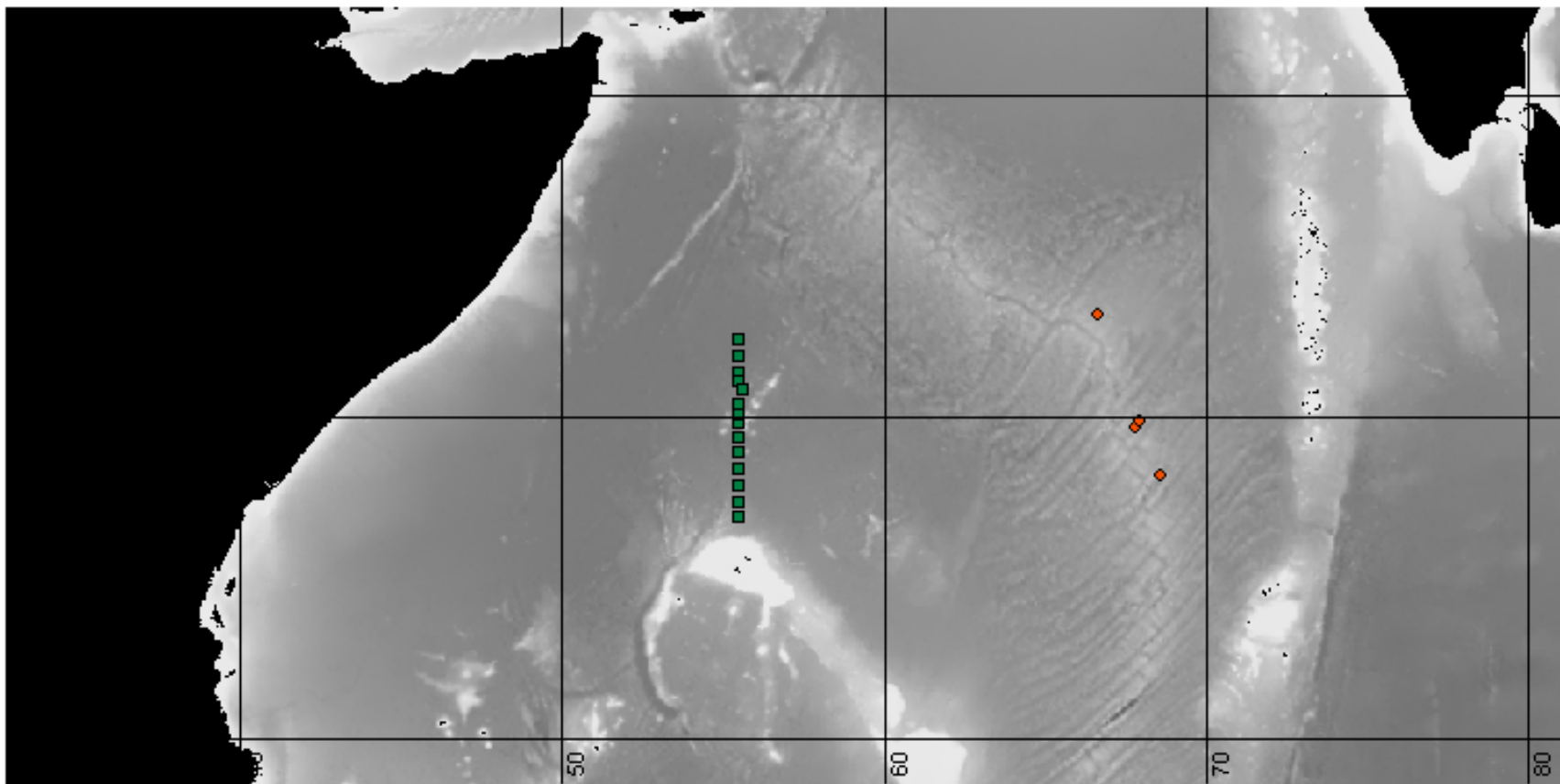


- ◆ 1971
- 1972
- ◆ 1973
- 1974
- ◆ 1975
- 1976
- ◆ 1977
- 1978
- ◆ 1979
- 1980
- ◆ 1981
- 1982
- ◆ 1983
- 1984
- ◆ 1985
- 1986
- ◆ 1987
- 1988
- ◆ 1989
- 1990
- ◆ 1991
- 1992
- ◆ 1993
- 1994
- ◆ 1995
- 1996
- ◆ 1997
- 1998
- ◆ 1999
- 2000
- ◆ 2001
- 2002
- ◆ 2003
- 2004
- ◆ 2005
- 2006

Arctic

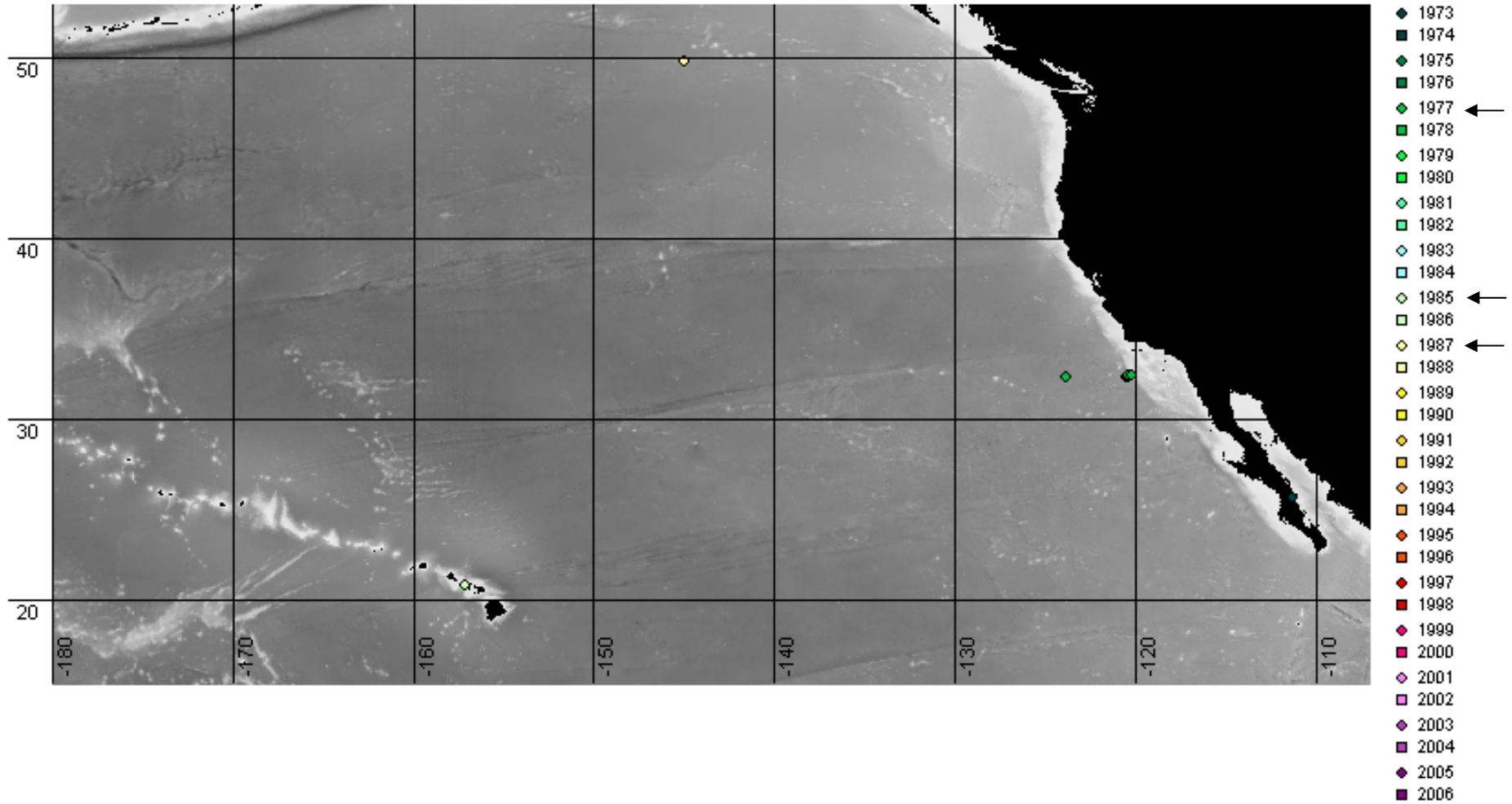


Arabian Sea

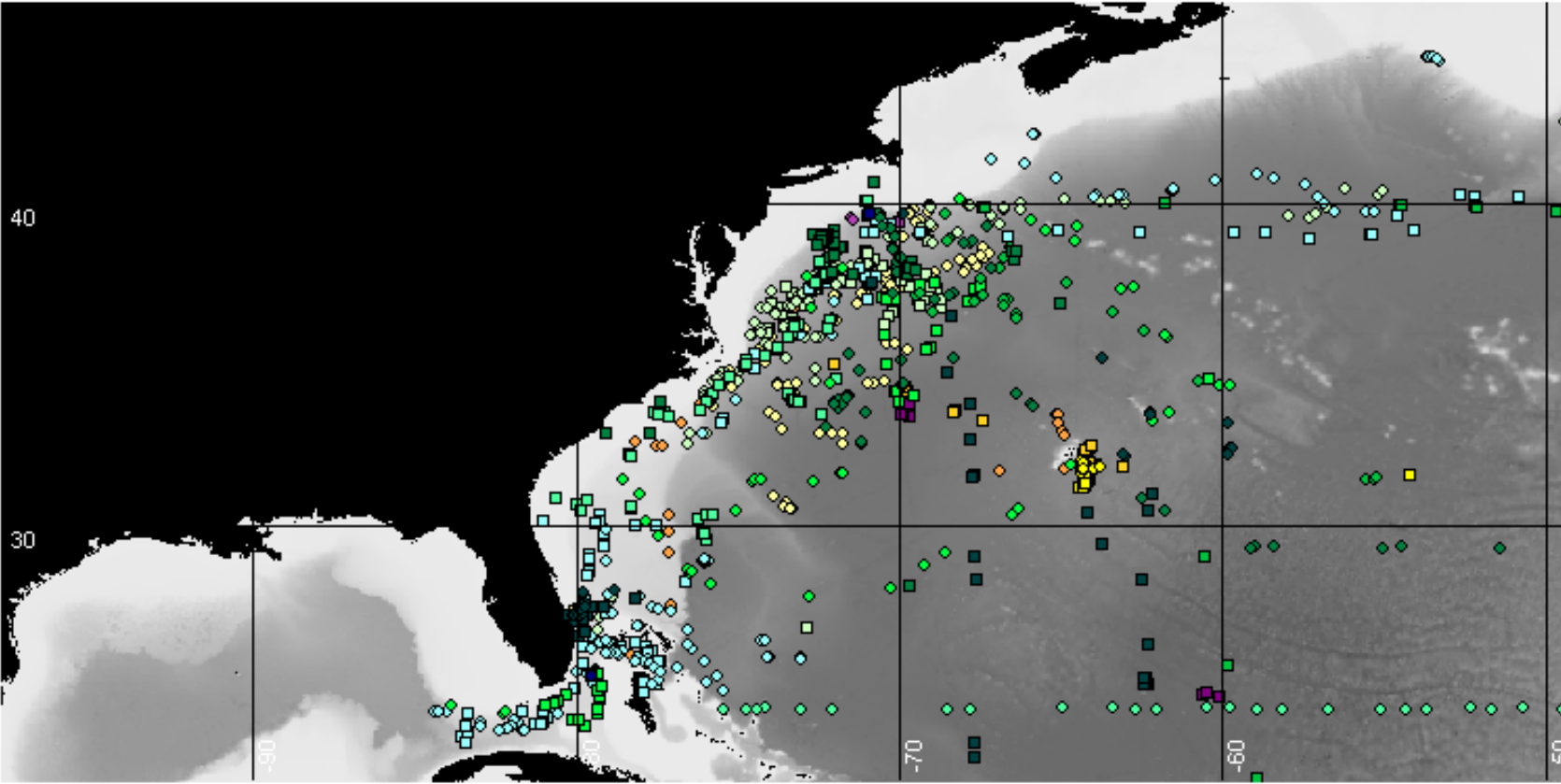


- ◆ 1971
- 1972
- ◆ 1973
- 1974
- ◆ 1975
- 1976 ←
- ◆ 1977
- 1978
- ◆ 1979
- 1980
- ◆ 1981
- 1982
- ◆ 1983
- 1984
- ◆ 1985
- 1986
- ◆ 1987
- 1988
- ◆ 1989
- 1990
- ◆ 1991
- 1992
- ◆ 1993
- 1994
- ◆ 1995 ←
- 1996
- ◆ 1997
- 1998
- ◆ 1999
- 2000
- ◆ 2001
- 2002
- ◆ 2003
- 2004
- ◆ 2005
- 2006

North Pacific

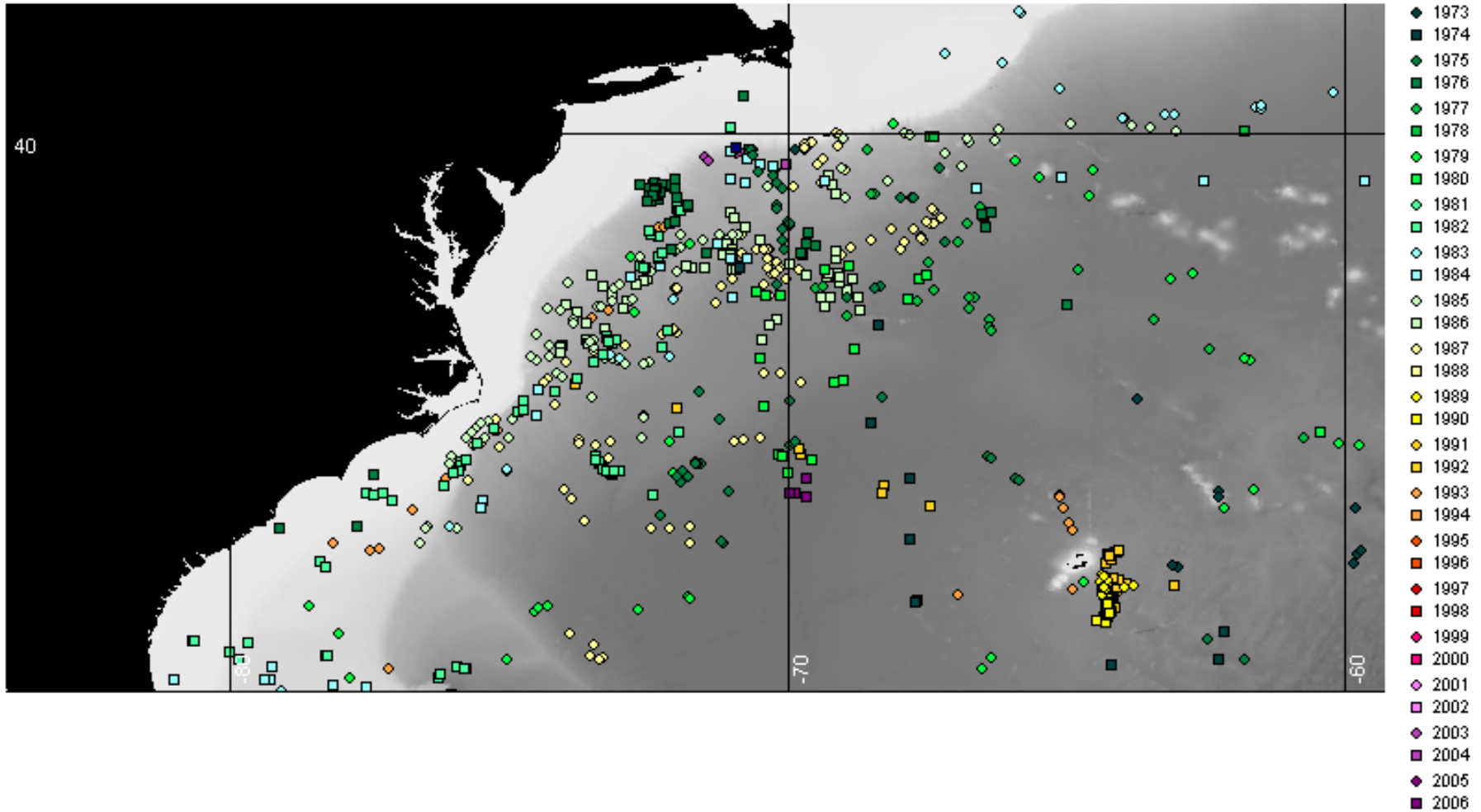


Western North Atlantic

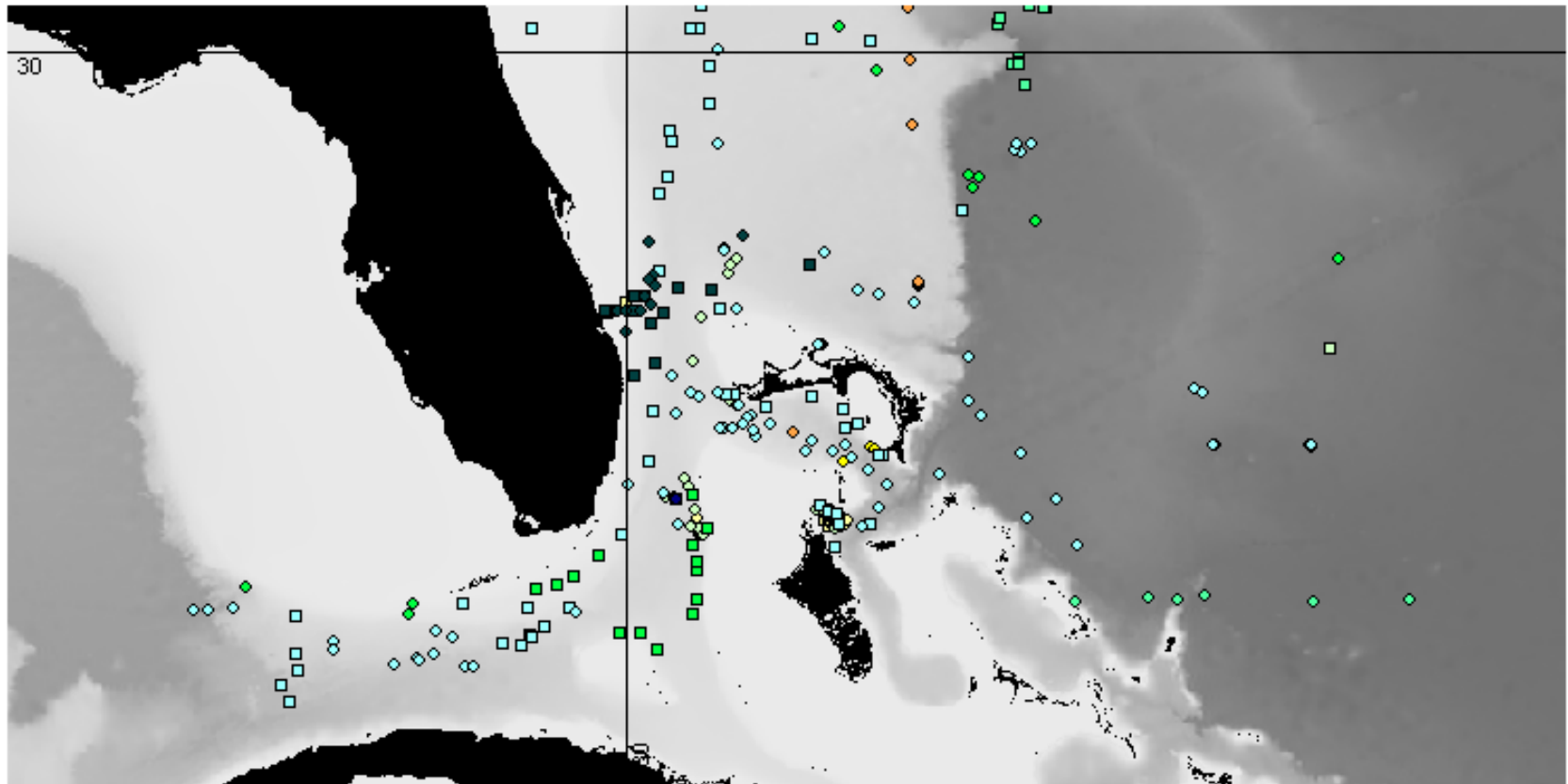


- ◆ 1971
- 1972
- ◆ 1973
- 1974
- ◆ 1975
- 1976
- ◆ 1977
- 1978
- ◆ 1979
- 1980
- ◆ 1981
- 1982
- ◇ 1983
- 1984
- ◇ 1985
- 1986
- ◇ 1987
- 1988
- ◇ 1989
- 1990
- ◇ 1991
- 1992
- ◇ 1993
- 1994
- ◇ 1995
- 1996
- ◆ 1997
- 1998
- ◆ 1999
- 2000
- ◇ 2001
- 2002
- ◆ 2003
- 2004
- ◆ 2005
- 2006

Atlantic Bight



Florida and surroundings



Eastern North Atlantic

